

# Converting Colors

YUV(44.2930, -10.9904,  
25.1760)

Have a look what the booklet for  
YUV(44.2930, -10.9904, 25.1760)  
contains.

<b>YUV(44.2930, -10.9904, 25.1760)</b> .....	3
<b><i>Conversions</i></b> .....	4
<b><i>Details</i></b> .....	6
<b><i>Harmonies</i></b> .....	12
<b><i>Previews</i></b> .....	24
<b><i>Color Blindness Simulation</i></b> .....	28
<b><i>CSS Examples</i></b> .....	31

# Color

**YUV(44.2930, -10.9904,  
25.1760)**

# Conversions

## Conversions Part 1

Format	Color
Hex	492216
RGB	73, 34, 22
RGB Percent	29%, 13%, 9%
CMY	0.7137, 0.8667, 0.9137
CMYK	0.00, 0.53, 0.70, 0.71
HSL	14°, 54%, 19%
HSV	14°, 70%, 29%
XYZ	3.4645, 2.6184, 1.0819
YIQ	44.2930, 27.0960, 4.5360

# Conversions

## Conversions Part 2

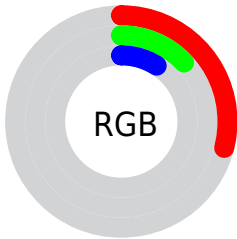
Format	Color
<b>RYB</b>	73, 38, 22
Decimal	4792854
CIELab	18.45, 17.31, 16.39
CIELCh	18, 23.839, 43.445
Yxy	2.6184, 0.4835, 0.3655
Android (android.graphics.Color)	4282982934 (0xFF492216)
YUV	44.2930, -10.9904, 25.1760
Hunter-Lab	16.1816, 9.8992, 7.3631

# Details

The YUV color **44.2930, -10.9904, 25.1760** is a dark color, and the websafe version is hex **663333**. A complement of this color would be **50.7070, 10.9904, -25.1760**, and the grayscale version is **44.0000, 0.0000, 0.0000**.

A 20% lighter version of the original color is **91.1580, -12.8959, 29.6794**, and **6.8770, -3.3904, 14.1399** is the 20% darker color. If you saturate the color by 10%, you get **39.9730, -12.3117, 28.9647**, and if you desaturate by 10%, it is **48.6130, -9.6692, 21.3874**.

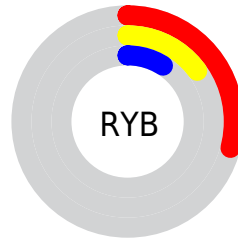
# Distribution



 Red (29%)

 Green (13%)

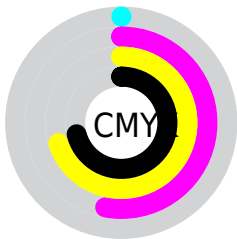
 Blue (9%)



 Red (29%)

 Yellow (15%)

 Blue (9%)

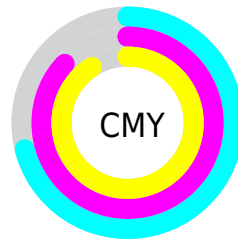


 Cyan (0%)

 Magenta (53%)

 Yellow (70%)

 Black (71%)



 Cyan (71%)

 Magenta (87%)

 Yellow (91%)

# Brightness & Saturation Gradients

These gradients show how the YUV color 44.2930, -10.9904, 25.1760 changes by changing the brightness by 10 percent. The first figure shows a shift by +10% for each color and the second figure -10%.

Similar to the brightness gradients but the following saturation gradients show a change of the YUV color 44.2930, -10.9904, 25.1760 by changing the saturation by 10% instead.



■ 44.2930, -10.9904,  
25.1760

■ 44.2930, -10.9904,  
25.1760

■ 254.2020, -3.0576,  
0.6998

■ 22.2820, -10.9850,  
23.4317

■ 91.1580, -12.8959,  
29.6794

■ 6.8770, -3.3904,  
14.1399

■ 116.5280,  
-14.0643, 31.1089

■ 0.0000, 0.0000,  
0.0000

■ 142.1260,  
-14.3591, 32.3385

■ 168.6100,  
-15.0907, 33.6680

■ 196.2080,  
-15.3855, 34.8976

■ 221.4030,

-14.4957, 29.4646

241.0310,  
-10.3683, 12.2508

44.2930, -10.9904,  
25.1760

44.2930, -10.9904,  
25.1760

39.9730, -12.3117,  
28.9647

48.6130, -9.6692,  
21.3874

36.1260, -14.3591,  
32.3385

52.4600, -7.6218,  
18.0136

31.8060, -15.6804,  
36.1271

56.7800, -6.3005,  
14.2249

60.5130, -4.6899,  
10.9511

64.9470, -2.9319,  
7.0625

■ 68.6800, -1.3212,  
3.7886

■ 73.0000, 0.0000,  
0.0000

■ 77.3200, 1.3212,  
-3.7886

■ 81.1670, 3.3687,  
-7.1625

# Harmonies

## Analogous

The Analogous color harmony consists of three colors that are next to each other on the color wheel.



44.9650, -3.4337, 28.0947



44.2930, -10.9904, 25.1760



43.6310, -17.0731, 16.1096

# Triad

The Triadic color harmony groups three colors that are evenly spaced from another and form a triangle on the color wheel.



44.2930, -10.9904, 25.1760



35.1010, -0.0498, -30.7836



43.2060, 17.6464, -13.3357

# Complementary

The Complementary color scheme is a pair of colors which are on the opposite of each other on the color wheel.



44.2930, -10.9904, 25.1760



50.7070, 10.9904, -25.1760

# Split Complementary

Split-complementary colors differ from the complementary color scheme. The scheme consists of three colors, the original color and two neighbors of the complement color.



38.2420, 19.6007, -33.5382



44.2930, -10.9904, 25.1760



37.0390, 7.3758, -32.4832

# Square

The Square scheme is like the rectangle color scheme, but the four colors are evenly spaced on the color wheel.



44.2930, -10.9904, 25.1760



40.4750, -10.5872, -10.9406



38.2760, 14.6539, -33.5681



46.4430, 11.6136, 8.3815



# Rectangle

The Rectangle color scheme consists of four colors that form a rectangle on the color wheel.



44.2930, -10.9904, 25.1760



42.9460, -18.2144, 8.8174



38.2760, 14.6539, -33.5681



39.5960, 19.4262, -24.2017

# Sweetspot

The Sweet Spot groups the original color and five complimentary colors.



44.2930, -10.9904, 25.1760



83.0290, -3.9583, 9.6216



41.6950, 9.5174, 27.4545



41.3490, -2.6371, 5.8329



176.0000, 0.0000, 0.0000



48.0000, 0.0000, 0.0000



# Same Dimension

The Same Dimension uses a secret algorithm to generate beautiful new colors.



44.2930, -10.9904, 25.1760



49.7740, -17.1436, 38.7862



58.9680, -18.2252, 12.3061



33.7830, -0.8790, 1.9443



43.1020, -21.2493, 49.0225



98.9840, -48.7991, 112.2700



# Inverse Universe

The Inverse Universe completely reimagines the original color for something new.



50.7070, 10.9904, -25.1760



59.8130, 16.8542, -39.3010



36.0320, 18.2252, -12.3061



34.2170, 0.8790, -1.9443



55.8980, 21.2493, -49.0225

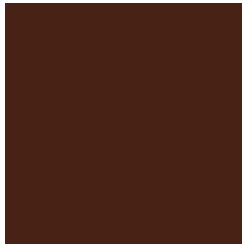


128.0160, 48.7991, -112.2700



# Previews

## White Background



This preview shows how the YUV color 44.2930, -10.9904, 25.1760 looks on a white background.

## Color Contrast Check

Large Text (above 18pt) WCAG AA ✓ Pass

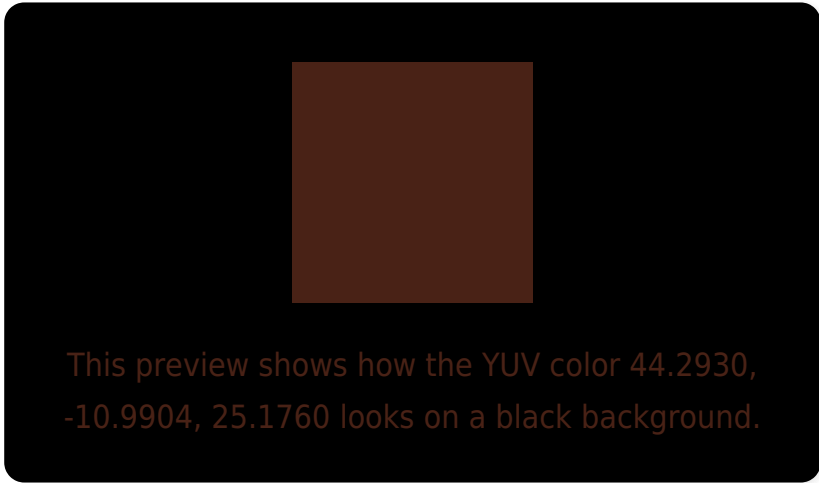
Any Text WCAG AA ✓ Pass

Large Text (above 18pt) WCAG AAA ✓ Pass

Any Text WCAG AAA ✓ Pass



# Black Background



## Color Contrast Check

Large Text (above 18pt) WCAG AA × Fail

Any Text WCAG AA × Fail

Large Text (above 18pt) WCAG AAA × Fail

Any Text WCAG AAA × Fail

If you want to check with other color combinations, try the [Color Contrast Checker](#).

# YUV 44.2930, -10.9904, 25.1760

## Background



This preview shows how black text looks on a background with the YUV color 44.2930, -10.9904, 25.1760.



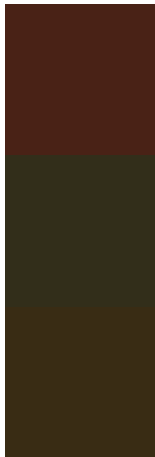
This preview shows how white text looks on a background with the YUV color 44.2930, -10.9904,



# Color Blindness Simulation

Color vision deficiency is a very complex topic, and I could not describe the different causes any better than Wikipedia does, so if you want to learn more, you should check out their [article about color blindness](#).

## Dichromacy



### Original Color

44.2930, -10.9904, 25.1760

### Protanopia

44.9160, -9.3256, 4.4587

### Deuteranopia

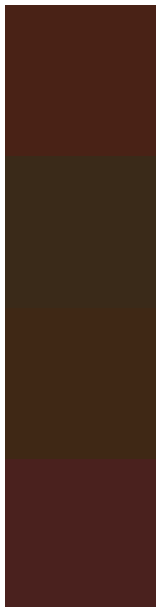
45.1510, -12.3994, 10.3916



## Tritanopia

44.9000, -4.8807, 25.5207

# Trichromacy



## Original Color

44.2930, -10.9904, 25.1760

## Protanomaly

44.8460, -9.7841, 11.5361

## Deuteranomaly

44.7110, -11.6895, 16.0395

## Tritanomaly

44.9170, -7.3541, 25.5058

# Monochromacy



## Original Color

44.2930, -10.9904, 25.1760

## Achromatopsia

44.0000, 0.0000, 0.0000

## Achromatomaly

44.0290, -3.9583, 9.6216

# CSS Examples

## Text

The CSS property to change the color of the text to YUV 44.2930, -10.9904, 25.1760 is called "color". The color property can be set on classes, ids or directly on the HTML element.

This example shows how text in the color `rgb(73, 34, 22)` looks like.

```
.text, #text, p{  
    color:rgb(73, 34, 22)  
}
```

If you want to add a text shadow in that color use the text-shadow property, you can generate a text shadow directly with our [CSS Text Shadow Generator](#).

Here you see how black text with a 4 pixel rgb(73, 34, 22) colored shadow looks like.

```
.shadow{ text-shadow: 4px 4px 2px rgb(73, 34, 22) }
```

## Border

The CSS property to change the border of an element to YUV 44.2930, -10.9904, 25.1760 is called "border". The border property can be set on classes, ids or directly on the HTML element.

This example shows the color as border, it can be applied via the CSS property "border" or "border-color".

```
.border, #border, table{ border:4px solid rgb(73, 34, 22) }
```



If only the border color should be changed use the property `border-color`.

```
.border{ border-color:rgb(73, 34, 22) }
```

If you want to add a box shadow in that color use:

Here you see how a box with a 4 pixel `rgb(73, 34, 22)` colored shadow looks like.

```
.boxshadow{ -moz-box-shadow:4px 4px 4px  
4px rgb(73, 34, 22); -webkit-box-  
shadow:4px 4px 4px 4px rgb(73, 34, 22);  
box-shadow:4px 4px 4px 4px rgb(73, 34, 22)  
}
```

# Background

The CSS property to change the background color of an element to YUV 44.2930, -10.9904, 25.1760 is called "background". The background property can be set on classes, ids or directly on the HTML element.

```
.background, #background, body{  
background: rgb(73, 34, 22) }
```

If only the background color should be changed can be used:

```
.background{ background-color: rgb(73, 34,  
22) }
```

This example shows the color as background, it is applied via the CSS property "background".

To optimize and compress your CSS code, you can use our [online CSS compressor and optimizer](#) based on csstidy. If you want to create a linear or radial gradient as background or border, check our [CSS Gradient Generator](#).

# Hey! You found this booklet interesting? Support Converting Colors with the new Membership Option!

The pro membership hides all ads, plus gives you double the colors in the color bucket, and more awesome pro features!

**[Learn more, Memberships starting at \\$2.50/m!](#)**

**Follow me  
on Twitter!**

@ConvertingColor