

Converting Colors

YUV(44.4050, -4.1437, 22.4468)

Have a look what the booklet for
YUV(44.4050, -4.1437, 22.4468)
contains.

YUV(44.4050, -4.1437, 22.4468)	3
<i>Conversions</i>	4
<i>Details</i>	6
<i>Harmonies</i>	12
<i>Previews</i>	24
<i>Color Blindness Simulation</i>	28
<i>CSS Examples</i>	31

Color

**YUV(44.4050, -4.1437,
22.4468)**

Conversions

Conversions Part 1

Format	Color
Hex	462124
RGB	70, 33, 36
RGB Percent	27%, 13%, 14%
CMY	0.7255, 0.8706, 0.8588
CMYK	0.00, 0.53, 0.49, 0.73
HSL	355°, 36%, 20%
HSV	355°, 53%, 27%
XYZ	3.3881, 2.5172, 1.9764
YIQ	44.4050, 21.0890, 8.7770

Conversions

Conversions Part 2

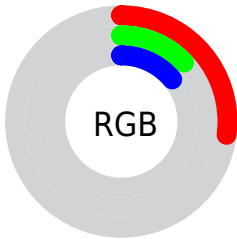
Format	Color
R_YB	70, 33, 36
Decimal	4596004
CIE Lab	18.00, 18.02, 6.05
CIE LCh	18, 19.008, 18.568
Yxy	2.5172, 0.4299, 0.3194
Android (android.graphics.Color)	4282786084 (0xFF462124)
YUV	44.4050, -4.1437, 22.4468
Hunter-Lab	15.8656, 10.3536, 3.7203

Details

The YUV color **44.4050, -4.1437, 22.4468** is a dark color, and the websafe version is hex **663333**. A complement of this color would be **58.5950, 4.1437, -22.4468**, and the grayscale version is **44.0000, 0.0000, 0.0000**.

A 20% lighter version of the original color is **90.7860, -5.3175, 25.6207**, and **6.2790, -3.0955, 12.9103** is the 20% darker color. If you saturate the color by 10%, you get **39.6120, -4.7387, 26.6503**, and if you desaturate by 10%, it is **49.1980, -3.5486, 18.2434**.

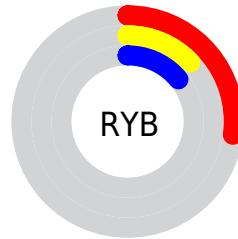
Distribution



Red (27%)

Green (13%)

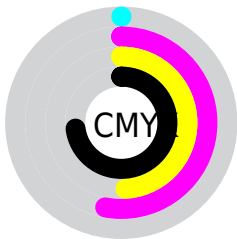
Blue (14%)



Red (27%)

Yellow (13%)

Blue (14%)

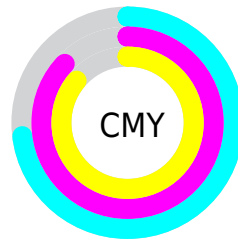


Cyan (0%)

Magenta (53%)

Yellow (49%)

Black (73%)



Cyan (73%)

Magenta (87%)

Yellow (86%)

Brightness & Saturation Gradients

These gradients show how the YUV color 44.4050, -4.1437, 22.4468 changes by changing the brightness by 10 percent. The first figure shows a shift by +10% for each color and the second figure -10%.

Similar to the brightness gradients but the following saturation gradients show a change of the YUV color 44.4050, -4.1437, 22.4468 by changing the saturation by 10% instead.

■ 44.4050, -4.1437,
22.4468

■ 44.4050, -4.1437,
22.4468

255.0000, 0.0000,
0.0000

■ 22.5080, -3.7014,
20.6025

■ 90.7860, -5.3175,
25.6207

■ 6.2790, -3.0955,
12.9103

■ 116.2700, -6.0491,
26.9502

■ 0.0000, 0.0000,
0.0000

■ 141.9820, -5.9071,
28.0798

■ 168.5800, -6.2019,
29.3093

■ 195.7650, -6.7861,
30.0241

■ 222.2810, -6.0545,

28.6946

242.4960, -2.2165,
10.9660

44.4050, -4.1437,
22.4468

44.4050, -4.1437,
22.4468

39.6120, -4.7387,
26.6503

49.1980, -3.5486,
18.2434

34.7050, -5.7706,
30.9537

54.1050, -2.5168,
13.9399

29.9120, -6.3656,
35.1572

58.8980, -1.9217,
9.7365

25.0050, -7.3975,
39.4606

63.8050, -0.8899,
5.4330

21.6140, -7.6977,
42.4345

68.5980, -0.2948,
1.2296

■ 73.5050, 0.7370,
-3.0739

■ 78.2980, 1.3321,
-7.2773

■ 83.0910, 1.9271,
-11.4808

■ 87.9980, 2.9590,
-15.7842

Harmonies

Analogous

The Analogous color harmony consists of three colors that are next to each other on the color wheel.



45.1040, 2.4137, 19.2028



44.4050, -4.1437, 22.4468



43.6020, -9.6638, 19.6430

Triad

The Triadic color harmony groups three colors that are evenly spaced from another and form a triangle on the color wheel.



44.4050, -4.1437, 22.4468



39.9850, -7.3876, -10.5108



37.4770, 16.5268, -27.6053

Complementary

The Complementary color scheme is a pair of colors which are on the opposite of each other on the color wheel.



44.4050, -4.1437, 22.4468



58.5950, 4.1437, -22.4468

Split Complementary

Split-complementary colors differ from the complementary color scheme. The scheme consists of three colors, the original color and two neighbors of the complement color.



36.6460, 13.4855, -32.1385



44.4050, -4.1437, 22.4468



35.7640, 1.1023, -26.9800

Square

The Square scheme is like the rectangle color scheme, but the four colors are evenly spaced on the color wheel.



44.4050, -4.1437, 22.4468



42.0960, -12.3723, 1.6698



35.8650, 7.9546, -31.4536



43.6970, 12.9674, -5.8733

Rectangle

The Rectangle color scheme consists of four colors that form a rectangle on the color wheel.



44.4050, -4.1437, 22.4468



43.4720, -12.5577, 14.4951



35.8650, 7.9546, -31.4536



36.0420, 16.2483, -31.6088

Sweetspot

The Sweet Spot groups the original color and five complimentary colors.



44.4050, -4.1437, 22.4468



81.5990, -1.7743, 9.1217



47.3840, 11.1497, 17.2032



39.8050, -0.8899, 5.4330



173.0000, 0.0000, 0.0000



46.0000, 0.0000, 0.0000

Same Dimension

The Same Dimension uses a secret algorithm to generate beautiful new colors.



44.4050, -4.1437, 22.4468



51.9120, -6.3656, 35.1572



52.8680, -9.7949, 15.0248



33.1960, -0.5896, 2.4591



30.5130, -11.0989, 60.0631



69.9250, -25.5990, 137.7548

Inverse Universe

The Inverse Universe completely reimagines the original color for something new.



44.4050, -4.1437, 22.4468



51.9120, -6.3656, 35.1572



50.1320, 9.7949, -15.0248



33.1960, -0.5896, 2.4591



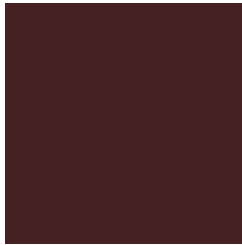
30.5130, -11.0989, 60.0631



69.9250, -25.5990, 137.7548

Previews

White Background



This preview shows how the YUV color 44.4050, -4.1437, 22.4468 looks on a white background.

Color Contrast Check

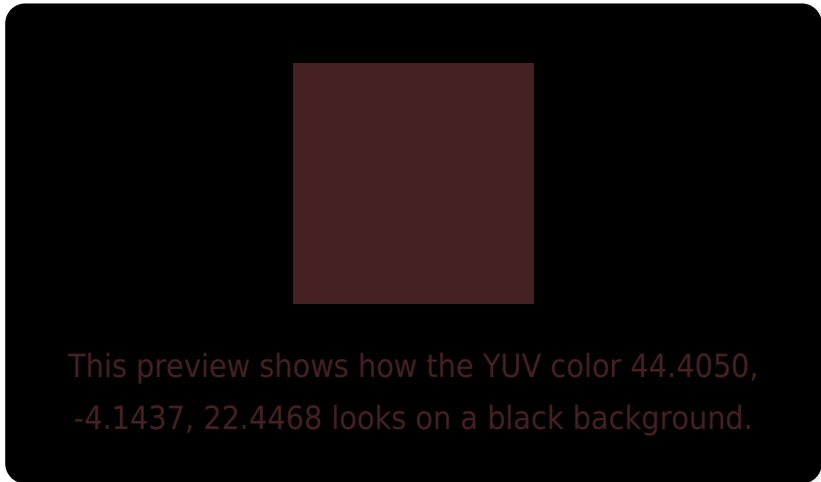
Large Text (above 18pt) WCAG AA ✓ Pass

Any Text WCAG AA ✓ Pass

Large Text (above 18pt) WCAG AAA ✓ Pass

Any Text WCAG AAA ✓ Pass

Black Background



Color Contrast Check

Large Text (above 18pt) WCAG AA × Fail

Any Text WCAG AA × Fail

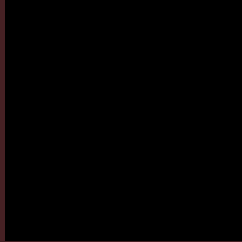
Large Text (above 18pt) WCAG AAA × Fail

Any Text WCAG AAA × Fail

If you want to check with other color combinations, try the [Color Contrast Checker](#).

YUV 44.4050, -4.1437, 22.4468

Background



This preview shows how black text looks on a background with the YUV color 44.4050, -4.1437, 22.4468.

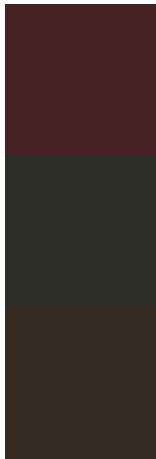


This preview shows how white text looks on a background with the YUV color 44.4050, -4.1437,

Color Blindness Simulation

Color vision deficiency is a very complex topic, and I could not describe the different causes any better than Wikipedia does, so if you want to learn more, you should check out their [article about color blindness](#).

Dichromacy



Original Color

44.4050, -4.1437, 22.4468

Protanopia

44.9570, -1.4578, 0.9147

Deuteranopia

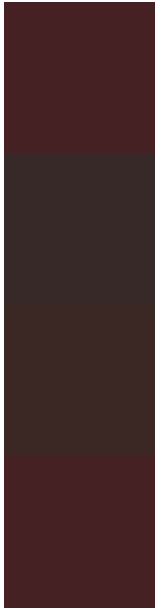
44.9640, -5.4053, 7.0476



Tritanopia

44.2910, -4.5805, 22.5468

Trichromacy



Original Color

44.4050, -4.1437, 22.4468

Protanomaly

45.0720, -2.5005, 8.7069

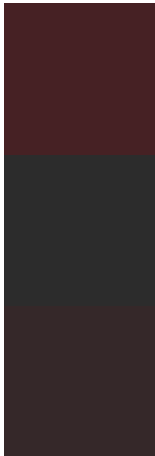
Deuteranomaly

44.5240, -4.6953, 12.6955

Tritanomaly

44.2910, -4.5805, 22.5468

Monochromacy



Original Color

44.4050, -4.1437, 22.4468

Achromatopsia

44.0000, 0.0000, 0.0000

Achromatomaly

44.0010, -1.4795, 7.8921

CSS Examples

Text

The CSS property to change the color of the text to YUV 44.4050, -4.1437, 22.4468 is called "color". The color property can be set on classes, ids or directly on the HTML element.

This example shows how text in the color `rgb(70, 33, 36)` looks like.

```
.text, #text, p{  
    color:rgb(70, 33, 36)  
}
```

If you want to add a text shadow in that color use the text-shadow property, you can generate a text shadow directly with our [CSS Text Shadow Generator](#).

Here you see how black text with a 4 pixel rgb(70, 33, 36) colored shadow looks like.

```
.shadow{ text-shadow: 4px 4px 2px rgb(70, 33, 36) }
```

Border

The CSS property to change the border of an element to YUV 44.4050, -4.1437, 22.4468 is called "border". The border property can be set on classes, ids or directly on the HTML element.

This example shows the color as border, it can be applied via the CSS property "border" or "border-color".

```
.border, #border, table{ border:4px solid rgb(70, 33, 36) }
```


If only the border color should be changed use the property border-color.

```
.border{ border-color:rgb(70, 33, 36) }
```

If you want to add a box shadow in that color use:

Here you see how a box with a 4 pixel rgb(70, 33, 36) colored shadow looks like.

```
.boxshadow{ -moz-box-shadow:4px 4px 4px  
4px rgb(70, 33, 36); -webkit-box-  
shadow:4px 4px 4px 4px rgb(70, 33, 36);  
box-shadow:4px 4px 4px 4px rgb(70, 33, 36)  
}
```

Background

The CSS property to change the background color of an element to YUV 44.4050, -4.1437, 22.4468 is called "background". The background property can be set on classes, ids or directly on the HTML element.

```
.background, #background, body{  
background: rgb(70, 33, 36) }
```

If only the background color should be changed can be used:

```
.background{ background-color: rgb(70, 33,  
36) }
```

This example shows the color as background, it is applied via the CSS property "background".

To optimize and compress your CSS code, you can use our [online CSS compressor and optimizer](#) based on csstidy. If you want to create a linear or radial gradient as background or border, check our [CSS Gradient Generator](#).

Hey! You found this booklet interesting? Support Converting Colors with the new Membership Option!

The pro membership hides all ads, plus gives you double the colors in the color bucket, and more awesome pro features!

[Learn more, Memberships starting at \\$2.50/m!](#)

**Follow me
on Twitter!**

@ConvertingColor