

Converting Colors

YUV(44.6920, -2.8062, 13.4251)

Have a look what the booklet for
YUV(44.6920, -2.8062, 13.4251)
contains.

YUV(44.6920, -2.8062, 13.4251)	3
<i>Conversions</i>	4
<i>Details</i>	6
<i>Harmonies</i>	12
<i>Previews</i>	24
<i>Color Blindness Simulation</i>	28
<i>CSS Examples</i>	31

Color

**YUV(44.6920, -2.8062,
13.4251)**

Conversions

Conversions Part 1

Format	Color
Hex	3C2627
RGB	60, 38, 39
RGB Percent	24%, 15%, 15%
CMY	0.7647, 0.8510, 0.8471
CMYK	0.00, 0.37, 0.35, 0.76
HSL	357°, 22%, 19%
HSV	357°, 37%, 24%
XYZ	2.9228, 2.4934, 2.2467
YIQ	44.6920, 12.7910, 4.9750

Conversions

Conversions Part 2

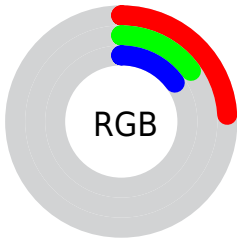
Format	Color
RYB	60, 38, 39
Decimal	3941927
CIELab	17.89, 10.58, 3.57
CIELCh	18, 11.163, 18.665
Yxy	2.4934, 0.3814, 0.3254
Android (android.graphics.Color)	4282132007 (0xFF3C2627)
YUV	44.6920, -2.8062, 13.4251
Hunter-Lab	15.7904, 5.4071, 2.6174

Details

The YUV color **44.6920, -2.8062, 13.4251** is a dark color, and the websafe version is hex **333333**. A complement of this color would be **53.3080, 2.8062, -13.4251**, and the grayscale version is **45.0000, 0.0000, 0.0000**.

A 20% lighter version of the original color is **90.5890, -3.2484, 15.2694**, and **1.1960, -0.5896, 2.4591** is the 20% darker color. If you saturate the color by 10%, you get **40.4860, -3.6906, 17.1138**, and if you desaturate by 10%, it is **48.8980, -1.9217, 9.7365**.

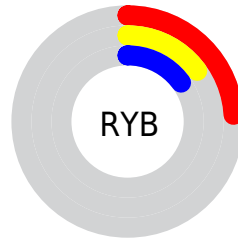
Distribution



Red (24%)

Green (15%)

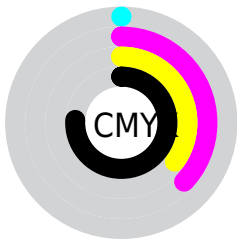
Blue (15%)



Red (24%)

Yellow (15%)

Blue (15%)

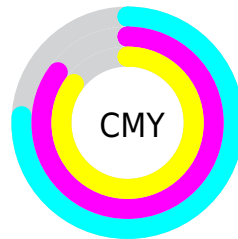


Cyan (0%)

Magenta (37%)

Yellow (35%)

Black (76%)



Cyan (76%)

Magenta (85%)

Yellow (85%)

Brightness & Saturation Gradients

These gradients show how the YUV color 44.6920, -2.8062, 13.4251 changes by changing the brightness by 10 percent. The first figure shows a shift by +10% for each color and the second figure -10%.

Similar to the brightness gradients but the following saturation gradients show a change of the YUV color 44.6920, -2.8062, 13.4251 by changing the saturation by 10% instead.

■ 44.6920, -2.8062,
13.4251

■ 44.6920, -2.8062,
13.4251

■ 255.0000, 0.0000,
0.0000

■ 23.9800, -2.9481,
12.2955

■ 90.5890, -3.2484,
15.2694

■ 1.1960, -0.5896,
2.4591

■ 115.1870, -3.5432,
16.4990

■ 0.0000, 0.0000,
0.0000

■ 141.0730, -3.9800,
16.5990

■ 167.3720, -4.1274,
17.2138

■ 194.6710, -4.2748,
17.8285

■ 222.3830, -4.1328,

18.9581

245.8870, -1.9163,
7.9921

44.6920, -2.8062,
13.4251

44.6920, -2.8062,
13.4251

40.4860, -3.6906,
17.1138

48.8980, -1.9217,
9.7365

36.3940, -4.1382,
20.7025

52.9900, -1.4741,
6.1478

32.1880, -5.0227,
24.3911

57.1960, -0.5896,
2.4591

27.9820, -5.9071,
28.0798

61.4020, 0.2948,
-1.2296

23.7760, -6.7916,
31.7684

65.6080, 1.1793,
-4.9182

■ 19.6840, -7.2392,
35.3571

■ 69.7000, 1.6269,
-8.5069

■ 18.2820, -7.5340,
36.5867

■ 73.9060, 2.5113,
-12.1956

■ 78.1120, 3.3958,
-15.8842

■ 82.3180, 4.2802,
-19.5729

Harmonies

Analogous

The Analogous color harmony consists of three colors that are next to each other on the color wheel.



45.0060, 0.9830, 11.3957



44.6920, -2.8062, 13.4251



44.4700, -6.1477, 11.8658

Triad

The Triadic color harmony groups three colors that are evenly spaced from another and form a triangle on the color wheel.



44.6920, -2.8062, 13.4251



41.8160, -4.3463, -5.9776



41.8120, 8.4737, -11.2361

Complementary

The Complementary color scheme is a pair of colors which are on the opposite of each other on the color wheel.



44.6920, -2.8062, 13.4251



53.3080, 2.8062, -13.4251

Split Complementary

Split-complementary colors differ from the complementary color scheme. The scheme consists of three colors, the original color and two neighbors of the complement color.



39.9530, 7.9112, -17.4988



44.6920, -2.8062, 13.4251



40.5100, -0.2514, -12.7253

Square

The Square scheme is like the rectangle color scheme, but the four colors are evenly spaced on the color wheel.



44.6920, -2.8062, 13.4251



42.7630, -7.2782, 1.0848



39.7420, 4.5642, -17.3137



44.2260, 7.2836, -2.8292

Rectangle

The Rectangle color scheme consists of four colors that form a rectangle on the color wheel.



44.6920, -2.8062, 13.4251



43.5190, -7.1579, 9.1918



39.7420, 4.5642, -17.3137



41.5020, 8.6265, -13.5953

Sweetspot

The Sweet Spot groups the original color and five complimentary colors.



44.6920, -2.8062, 13.4251



72.8050, -0.8899, 5.4330



46.7870, 6.5140, 10.7108



36.9080, -0.4476, 3.5887



168.0000, 0.0000, 0.0000



41.0000, 0.0000, 0.0000

Same Dimension

The Same Dimension uses a secret algorithm to generate beautiful new colors.



44.6920, -2.8062, 13.4251



54.6930, -4.2856, 21.3172



50.4480, -6.1369, 8.3771



28.8970, -0.4422, 1.8443



28.5620, -12.1091, 57.3891



67.5180, -28.3564, 135.4807

Inverse Universe

The Inverse Universe completely reimagines the original color for something new.



44.6920, -2.8062, 13.4251



54.6930, -4.2856, 21.3172



47.5520, 6.1369, -8.3771



28.8970, -0.4422, 1.8443



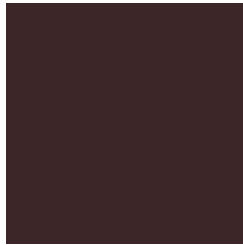
28.5620, -12.1091, 57.3891



67.5180, -28.3564, 135.4807

Previews

White Background



This preview shows how the YUV color 44.6920, -2.8062, 13.4251 looks on a white background.

Color Contrast Check

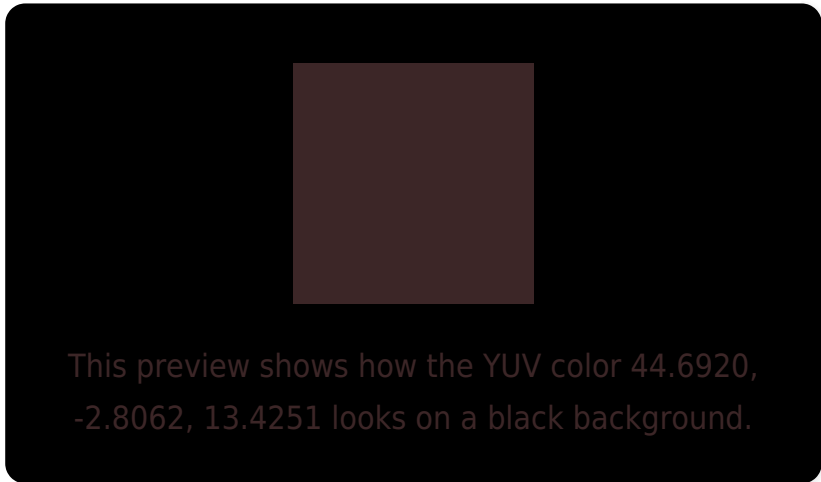
Large Text (above 18pt) WCAG AA ✓ Pass

Any Text WCAG AA ✓ Pass

Large Text (above 18pt) WCAG AAA ✓ Pass

Any Text WCAG AAA ✓ Pass

Black Background



Color Contrast Check

Large Text (above 18pt) WCAG AA × Fail

Any Text WCAG AA × Fail

Large Text (above 18pt) WCAG AAA × Fail

Any Text WCAG AAA × Fail

If you want to check with other color combinations, try the [Color Contrast Checker](#).

YUV 44.6920, -2.8062, 13.4251

Background



This preview shows how black text looks on a background with the YUV color 44.6920, -2.8062, 13.4251.

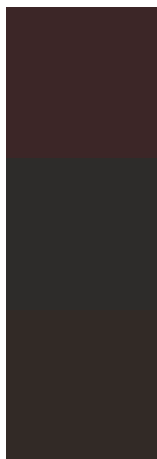


This preview shows how white text looks on a background with the YUV color 44.6920, -2.8062,

Color Blindness Simulation

Color vision deficiency is a very complex topic, and I could not describe the different causes any better than Wikipedia does, so if you want to learn more, you should check out their [article about color blindness](#).

Dichromacy



Original Color

44.6920, -2.8062, 13.4251

Protanopia

44.0710, -1.0210, 0.8147

Deuteranopia

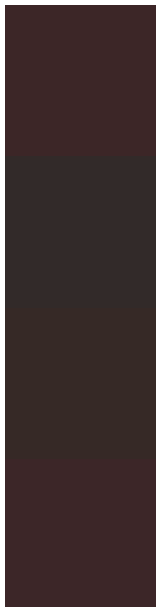
43.9360, -2.9264, 5.3181



Tritanopia

44.9200, -1.9326, 13.2252

Trichromacy



Original Color

44.6920, -2.8062, 13.4251

Protanomaly

44.2780, -1.6161, 5.0182

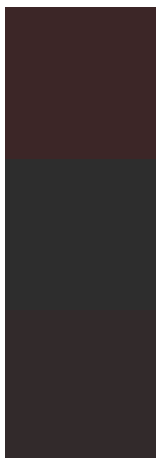
Deuteranomaly

44.5450, -3.2267, 8.2920

Tritanomaly

44.8060, -2.3694, 13.3251

Monochromacy



Original Color

44.6920, -2.8062, 13.4251

Achromatopsia

45.0000, 0.0000, 0.0000

Achromatomaly

44.5060, -0.7425, 4.8182

CSS Examples

Text

The CSS property to change the color of the text to YUV 44.6920, -2.8062, 13.4251 is called "color". The color property can be set on classes, ids or directly on the HTML element.

This example shows how text in the color `rgb(60, 38, 39)` looks like.

```
.text, #text, p{  
    color:rgb(60, 38, 39)  
}
```

If you want to add a text shadow in that color use the text-shadow property, you can generate a text shadow directly with our [CSS Text Shadow Generator](#).

Here you see how black text with a 4 pixel rgb(60, 38, 39) colored shadow looks like.

```
.shadow{ text-shadow: 4px 4px 2px rgb(60, 38, 39) }
```

Border

The CSS property to change the border of an element to YUV 44.6920, -2.8062, 13.4251 is called "border". The border property can be set on classes, ids or directly on the HTML element.

This example shows the color as border, it can be applied via the CSS property "border" or "border-color".

```
.border, #border, table{ border:4px solid rgb(60, 38, 39) }
```


If only the border color should be changed use the property `border-color`.

```
.border{ border-color:rgb(60, 38, 39) }
```

If you want to add a box shadow in that color use:

Here you see how a box with a 4 pixel `rgb(60, 38, 39)` colored shadow looks like.

```
.boxshadow{ -moz-box-shadow:4px 4px 4px  
4px rgb(60, 38, 39); -webkit-box-  
shadow:4px 4px 4px 4px rgb(60, 38, 39);  
box-shadow:4px 4px 4px 4px rgb(60, 38, 39)  
}
```

Background

The CSS property to change the background color of an element to YUV 44.6920, -2.8062, 13.4251 is called "background". The background property can be set on classes, ids or directly on the HTML element.

```
.background, #background, body{  
background: rgb(60, 38, 39) }
```

If only the background color should be changed can be used:

```
.background{ background-color: rgb(60, 38,  
39) }
```

This example shows the color as background, it is applied via the CSS property "background".

To optimize and compress your CSS code, you can use our [online CSS compressor and optimizer](#) based on csstidy. If you want to create a linear or radial gradient as background or border, check our [CSS Gradient Generator](#).

Hey! You found this booklet
interesting? Support Converting
Colors with the new Membership
Option!

The pro membership hides all ads, plus gives you
double the colors in the color bucket, and more
awesome pro features!

[Learn more, Memberships starting at \\$2.50/m!](#)

**Follow me
on Twitter!**

@ConvertingColor