

Converting Colors

YUV(44.6930, -4.2856, 21.3172)

Have a look what the booklet for
YUV(44.6930, -4.2856, 21.3172)
contains.

YUV(44.6930, -4.2856, 21.3172)	3
<i>Conversions</i>	4
<i>Details</i>	6
<i>Harmonies</i>	12
<i>Previews</i>	24
<i>Color Blindness Simulation</i>	28
<i>CSS Examples</i>	31

Color

**YUV(44.6930, -4.2856,
21.3172)**

Conversions

Conversions Part 1

Format	Color
Hex	452224
RGB	69, 34, 36
RGB Percent	27%, 13%, 14%
CMY	0.7294, 0.8667, 0.8588
CMYK	0.00, 0.51, 0.48, 0.73
HSL	357°, 34%, 20%
HSV	357°, 51%, 27%
XYZ	3.3447, 2.5366, 1.9824
YIQ	44.6930, 20.2180, 8.0420

Conversions

Conversions Part 2

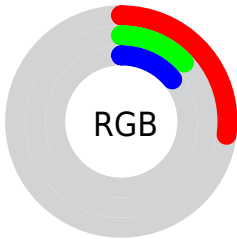
Format	Color
R_{YB}	69, 34, 36
Decimal	4530724
CIE _{Lab}	18.08, 16.94, 6.15
CIE _{LCh}	18, 18.019, 19.956
Yxy	2.5366, 0.4253, 0.3226
Android (android.graphics.Color)	4282720804 (0xFF452224)
YUV	44.6930, -4.2856, 21.3172
Hunter-Lab	15.9268, 9.6139, 3.7690

Details

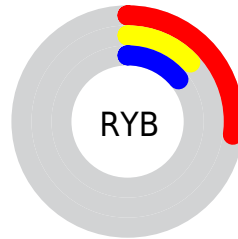
The YUV color **44.6930, -4.2856, 21.3172** is a dark color, and the websafe version is hex **663333**. A complement of this color would be **58.3070, 4.2856, -21.3172**, and the grayscale version is **45.0000, 0.0000, 0.0000**.

A 20% lighter version of the original color is **91.0740, -5.4595, 24.4911**, and **5.9800, -2.9481, 12.2955** is the 20% darker color. If you saturate the color by 10%, you get **39.7860, -5.3175, 25.6207**, and if you desaturate by 10%, it is **49.6000, -3.2538, 17.0138**.

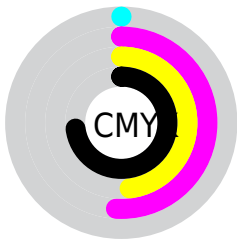
Distribution



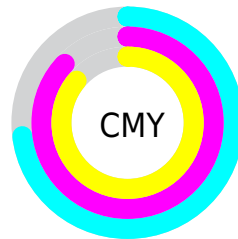
- Red (27%)
- Green (13%)
- Blue (14%)



- Red (27%)
- Yellow (13%)
- Blue (14%)



- Cyan (0%)
- Magenta (51%)
- Yellow (48%)
- Black (73%)



- Cyan (73%)
- Magenta (87%)
- Yellow (86%)

Brightness & Saturation Gradients

These gradients show how the YUV color 44.6930, -4.2856, 21.3172 changes by changing the brightness by 10 percent. The first figure shows a shift by +10% for each color and the second figure -10%.

Similar to the brightness gradients but the following saturation gradients show a change of the YUV color 44.6930, -4.2856, 21.3172 by changing the saturation by 10% instead.

■ 44.6930, -4.2856,
21.3172

■ 44.6930, -4.2856,
21.3172

255.0000, 0.0000,
0.0000

■ 23.0950, -3.9908,
20.0877

■ 91.0740, -5.4595,
24.4911

■ 5.9800, -2.9481,
12.2955

■ 116.2590, -6.0437,
25.2059

■ 0.0000, 0.0000,
0.0000

■ 141.9710, -5.9017,
26.3354

■ 168.5690, -6.1965,
27.5650

■ 196.0530, -6.9281,
28.8945

■ 222.8680, -6.3439,

28.1798

243.0830, -2.5059,
10.4512

44.6930, -4.2856,
21.3172

44.6930, -4.2856,
21.3172

39.7860, -5.3175,
25.6207

49.6000, -3.2538,
17.0138

34.9930, -5.9125,
29.8241

54.3930, -2.6587,
12.8103

30.0860, -6.9444,
34.1276

59.3000, -1.6269,
8.5069

25.2930, -7.5394,
38.3310

64.0930, -1.0318,
4.3034

21.0870, -8.4239,
42.0197

69.0000, 0.0000,
0.0000

■ 73.2060, 0.8844,
-3.6887

■ 78.1130, 1.9163,
-7.9921

■ 82.9060, 2.5113,
-12.1956

■ 87.8130, 3.5432,
-16.4990

Harmonies

Analogous

The Analogous color harmony consists of three colors that are next to each other on the color wheel.



45.2780, 1.8349, 18.1732



44.6930, -4.2856, 21.3172



44.0040, -9.3690, 18.4135

Triad

The Triadic color harmony groups three colors that are evenly spaced from another and form a triangle on the color wheel.



44.6930, -4.2856, 21.3172



40.5120, -6.6614, -10.0960



39.1570, 15.2056, -23.8167

Complementary

The Complementary color scheme is a pair of colors which are on the opposite of each other on the color wheel.



44.6930, -4.2856, 21.3172



58.3070, 4.2856, -21.3172

Split Complementary

Split-complementary colors differ from the complementary color scheme. The scheme consists of three colors, the original color and two neighbors of the complement color.



36.6460, 13.4855, -32.1385



44.6930, -4.2856, 21.3172



36.7750, 1.0969, -25.2357

Square

The Square scheme is like the rectangle color scheme, but the four colors are evenly spaced on the color wheel.



44.6930, -4.2856, 21.3172



42.3240, -11.4987, 1.4699



35.9790, 8.3914, -31.5536



44.1810, 12.2358, -4.5437

Rectangle

The Rectangle color scheme consists of four colors that form a rectangle on the color wheel.



44.6930, -4.2856, 21.3172



43.4010, -11.5367, 13.6803



35.9790, 8.3914, -31.5536



36.2270, 15.6641, -30.8941

Sweetspot

The Sweet Spot groups the original color and five complimentary colors.



44.6930, -4.2856, 21.3172



80.0010, -1.4795, 7.8921



47.8570, 10.4235, 16.7884



40.3920, -1.1793, 4.9182



173.0000, 0.0000, 0.0000



46.0000, 0.0000, 0.0000

Same Dimension

The Same Dimension uses a secret algorithm to generate beautiful new colors.



44.6930, -4.2856, 21.3172



51.4880, -6.6496, 32.8980



53.2700, -9.5001, 13.7952



33.1960, -0.5896, 2.4591



30.2850, -11.9725, 60.2631



69.3550, -27.7830, 138.2547

Inverse Universe

The Inverse Universe completely reimagines the original color for something new.



44.6930, -4.2856, 21.3172



51.4880, -6.6496, 32.8980



49.7300, 9.5001, -13.7952



33.1960, -0.5896, 2.4591



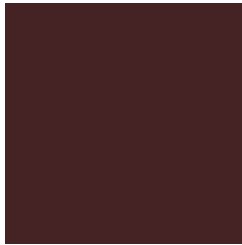
30.2850, -11.9725, 60.2631



69.3550, -27.7830, 138.2547

Previews

White Background



This preview shows how the YUV color 44.6930, -4.2856, 21.3172 looks on a white background.

Color Contrast Check

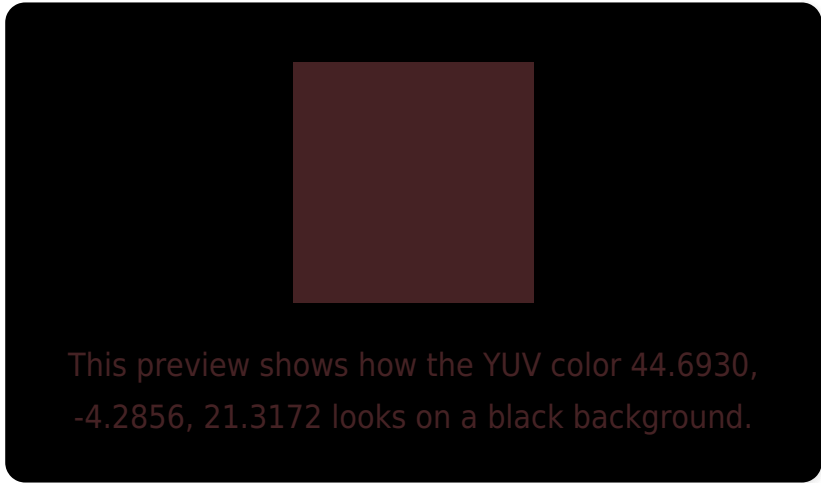
Large Text (above 18pt) WCAG AA ✓ Pass

Any Text WCAG AA ✓ Pass

Large Text (above 18pt) WCAG AAA ✓ Pass

Any Text WCAG AAA ✓ Pass

Black Background



Color Contrast Check

Large Text (above 18pt) WCAG AA × Fail

Any Text WCAG AA × Fail

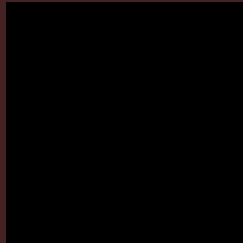
Large Text (above 18pt) WCAG AAA × Fail

Any Text WCAG AAA × Fail

If you want to check with other color combinations, try the [Color Contrast Checker](#).

YUV 44.6930, -4.2856, 21.3172

Background



This preview shows how black text looks on a background with the YUV color 44.6930, -4.2856, 21.3172.

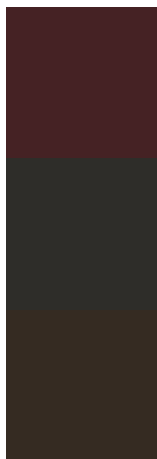


This preview shows how white text looks on a background with the YUV color 44.6930, -4.2856,

Color Blindness Simulation

Color vision deficiency is a very complex topic, and I could not describe the different causes any better than Wikipedia does, so if you want to learn more, you should check out their [article about color blindness](#).

Dichromacy



Original Color

44.6930, -4.2856, 21.3172

Protanopia

44.8430, -1.8946, 1.0147

Deuteranopia

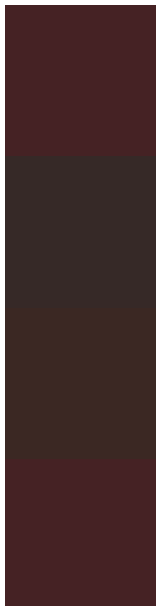
44.9640, -5.4053, 7.0476



Tritanopia

44.6930, -4.2856, 21.3172

Trichromacy



Original Color

44.6930, -4.2856, 21.3172

Protanomaly

44.6590, -2.7899, 8.1921

Deuteranomaly

45.1110, -4.9847, 12.1807

Tritanomaly

44.6930, -4.2856, 21.3172

Monochromacy



Original Color

44.6930, -4.2856, 21.3172

Achromatopsia

45.0000, 0.0000, 0.0000

Achromatomaly

45.0010, -1.4795, 7.8921

CSS Examples

Text

The CSS property to change the color of the text to YUV 44.6930, -4.2856, 21.3172 is called "color". The color property can be set on classes, ids or directly on the HTML element.

This example shows how text in the color `rgb(69, 34, 36)` looks like.

```
.text, #text, p{  
    color:rgb(69, 34, 36)  
}
```

If you want to add a text shadow in that color use the text-shadow property, you can generate a text shadow directly with our [CSS Text Shadow Generator](#).

Here you see how black text with a 4 pixel rgb(69, 34, 36) colored shadow looks like.

```
.shadow{ text-shadow: 4px 4px 2px rgb(69, 34, 36) }
```

Border

The CSS property to change the border of an element to YUV 44.6930, -4.2856, 21.3172 is called "border". The border property can be set on classes, ids or directly on the HTML element.

This example shows the color as border, it can be applied via the CSS property "border" or "border-color".

```
.border, #border, table{ border:4px solid rgb(69, 34, 36) }
```


If only the border color should be changed use the property border-color.

```
.border{ border-color:rgb(69, 34, 36) }
```

If you want to add a box shadow in that color use:

Here you see how a box with a 4 pixel rgb(69, 34, 36) colored shadow looks like.

```
.boxshadow{ -moz-box-shadow:4px 4px 4px  
4px rgb(69, 34, 36); -webkit-box-  
shadow:4px 4px 4px 4px rgb(69, 34, 36);  
box-shadow:4px 4px 4px 4px rgb(69, 34, 36)  
}
```

Background

The CSS property to change the background color of an element to YUV 44.6930, -4.2856, 21.3172 is called "background". The background property can be set on classes, ids or directly on the HTML element.

```
.background, #background, body{  
background: rgb(69, 34, 36) }
```

If only the background color should be changed can be used:

```
.background{ background-color: rgb(69, 34,  
36) }
```

This example shows the color as background, it is applied via the CSS property "background".

To optimize and compress your CSS code, you can use our [online CSS compressor and optimizer](#) based on csstidy. If you want to create a linear or radial gradient as background or border, check our [CSS Gradient Generator](#).

Hey! You found this booklet interesting? Support Converting Colors with the new Membership Option!

The pro membership hides all ads, plus gives you double the colors in the color bucket, and more awesome pro features!

[Learn more, Memberships starting at \\$2.50/m!](#)

**Follow me
on Twitter!**

@ConvertingColor