

Converting Colors

YUV(45.0730, -3.9800, 16.5990)

Have a look what the booklet for
YUV(45.0730, -3.9800, 16.5990)
contains.

YUV(45.0730, -3.9800, 16.5990)	3
<i>Conversions</i>	4
<i>Details</i>	6
<i>Harmonies</i>	12
<i>Previews</i>	24
<i>Color Blindness Simulation</i>	28
<i>CSS Examples</i>	31

Color

**YUV(45.0730, -3.9800,
16.5990)**

Conversions

Conversions Part 1

Format	Color
Hex	402525
RGB	64, 37, 37
RGB Percent	25%, 15%, 15%
CMY	0.7490, 0.8549, 0.8549
CMYK	0.00, 0.42, 0.42, 0.75
HSL	0°, 27%, 20%
HSV	0°, 42%, 25%
XYZ	3.1098, 2.5467, 2.0779
YIQ	45.0730, 16.0920, 5.7240

Conversions

Conversions Part 2

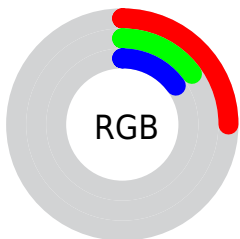
Format	Color
RYB	64, 37, 37
Decimal	4203813
CIELab	18.13, 12.81, 5.40
CIElCh	18, 13.904, 22.834
Yxy	2.5467, 0.4021, 0.3293
Android (android.graphics.Color)	4282393893 (0xFF402525)
YUV	45.0730, -3.9800, 16.5990
Hunter-Lab	15.9584, 6.8576, 3.4508

Details

The YUV color **45.0730, -3.9800, 16.5990** is a dark color, and the websafe version is hex **333333**. A complement of this color would be **55.9270, 3.9800, -16.5990**, and the grayscale version is **45.0000, 0.0000, 0.0000**.

A 20% lighter version of the original color is **91.2690, -4.5696, 19.0581**, and **3.5880, -1.7689, 7.3773** is the 20% darker color. If you saturate the color by 10%, you get **40.8670, -4.8644, 20.2876**, and if you desaturate by 10%, it is **49.2790, -3.0955, 12.9103**.

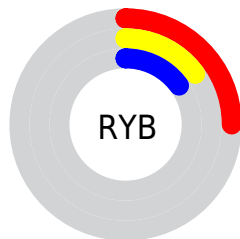
Distribution



Red (25%)

Green (15%)

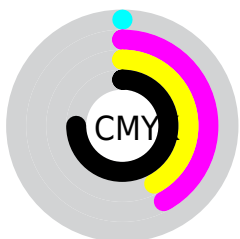
Blue (15%)



Red (25%)

Yellow (15%)

Blue (15%)

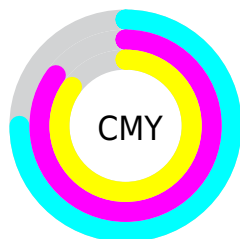


Cyan (0%)

Magenta (42%)

Yellow (42%)

Black (75%)



Cyan (75%)

Magenta (85%)

Yellow (85%)

Brightness & Saturation Gradients

These gradients show how the YUV color 45.0730, -3.9800, 16.5990 changes by changing the brightness by 10 percent. The first figure shows a shift by +10% for each color and the second figure -10%.

Similar to the brightness gradients but the following saturation gradients show a change of the YUV color 45.0730, -3.9800, 16.5990 by changing the saturation by 10% instead.

■ 45.0730, -3.9800,
16.5990

■ 45.0730, -3.9800,
16.5990

■ 255.0000, 0.0000,
0.0000

■ 23.4750, -3.6852,
15.3694

■ 91.2690, -4.5696,
19.0581

■ 3.5880, -1.7689,
7.3773

■ 115.8670, -4.8644,
20.2876

■ 0.0000, 0.0000,
0.0000

■ 142.0520, -5.4486,
21.0024

■ 168.3510, -5.5960,
21.6172

■ 195.6500, -5.7434,
22.2320

■ 223.2480, -6.0383,

23.4615

245.0720, -2.5005,
8.7069

45.0730, -3.9800,
16.5990

45.0730, -3.9800,
16.5990

40.8670, -4.8644,
20.2876

49.2790, -3.0955,
12.9103

35.9600, -5.8963,
24.5911

54.1860, -2.0637,
8.6069

31.7540, -6.7807,
28.2797

58.3920, -1.1793,
4.9182

26.8470, -7.8126,
32.5832

63.2990, -0.1474,
0.6148

22.6410, -8.6970,
36.2718

67.5050, 0.7370,
-3.0739

■ 19.1360, -9.4340,
39.3457

■ 71.7110, 1.6215,
-6.7625

■ 76.6180, 2.6533,
-11.0660

■ 80.8240, 3.5378,
-14.7546

■ 85.7310, 4.5696,
-19.0581

Harmonies

Analogous

The Analogous color harmony consists of three colors that are next to each other on the color wheel.



45.6150, 0.6828, 14.3696



45.0730, -3.9800, 16.5990



44.4380, -7.6109, 14.5249

Triad

The Triadic color harmony groups three colors that are evenly spaced from another and form a triangle on the color wheel.



45.0730, -3.9800, 16.5990



41.3920, -4.6303, -8.2368



42.0720, 10.8105, -14.0951

Complementary

The Complementary color scheme is a pair of colors which are on the opposite of each other on the color wheel.



45.0730, -3.9800, 16.5990



55.9270, 3.9800, -16.5990

Split Complementary

Split-complementary colors differ from the complementary color scheme. The scheme consists of three colors, the original color and two neighbors of the complement color.



38.3050, 10.6956, -23.9465



45.0730, -3.9800, 16.5990



39.7050, 0.6384, -18.1583

Square

The Square scheme is like the rectangle color scheme, but the four colors are evenly spaced on the color wheel.



45.0730, -3.9800, 16.5990



42.8230, -8.2937, 0.1552



37.6700, 7.0647, -26.0206



44.9810, 8.8834, -2.6143

Rectangle

The Rectangle color scheme consists of four colors that form a rectangle on the color wheel.



45.0730, -3.9800, 16.5990



44.2480, -9.4893, 10.3065



37.6700, 7.0647, -26.0206



41.0500, 10.8214, -17.5838

Sweetspot

The Sweet Spot groups the original color and five complimentary colors.



45.0730, -3.9800, 16.5990



76.2890, -1.6215, 6.7625



48.1510, 7.8136, 13.8996



38.0930, -1.0318, 4.3034



171.0000, 0.0000, 0.0000



43.0000, 0.0000, 0.0000

Same Dimension

The Same Dimension uses a secret algorithm to generate beautiful new colors.



45.0730, -3.9800, 16.5990



53.8570, -6.3385, 26.4354



53.2910, -8.0315, 9.3918



30.8970, -0.4422, 1.8443



29.0030, -14.2985, 59.6334



66.9760, -33.0192, 137.7100

Inverse Universe

The Inverse Universe completely reimagines the original color for something new.



55.9270, 3.9800, -16.5990



71.1430, 6.3385, -26.4354



48.2960, 7.7421, -9.9066



32.1030, 0.4422, -1.8443



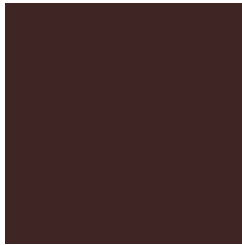
67.9970, 14.2985, -59.6334



157.0240, 33.0192, -137.7100

Previews

White Background



This preview shows how the YUV color 45.0730, -3.9800, 16.5990 looks on a white background.

Color Contrast Check

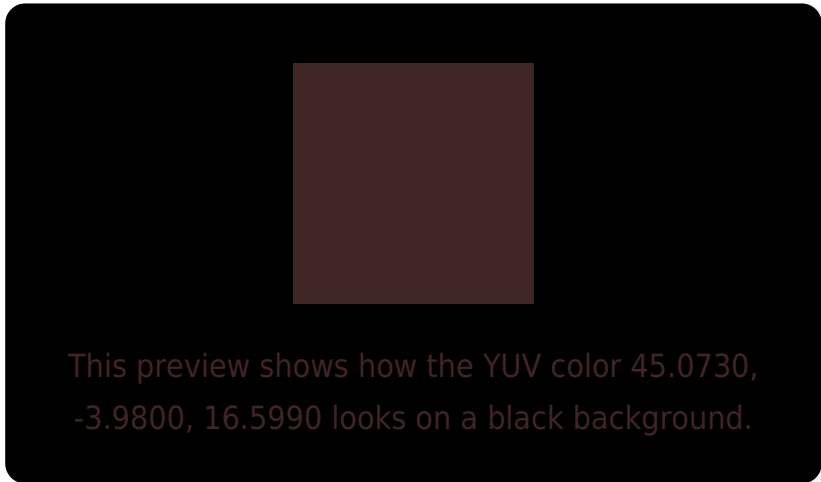
Large Text (above 18pt) WCAG AA ✓ Pass

Any Text WCAG AA ✓ Pass

Large Text (above 18pt) WCAG AAA ✓ Pass

Any Text WCAG AAA ✓ Pass

Black Background



Color Contrast Check

Large Text (above 18pt) WCAG AA × Fail

Any Text WCAG AA × Fail

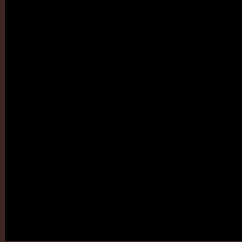
Large Text (above 18pt) WCAG AAA × Fail

Any Text WCAG AAA × Fail

If you want to check with other color combinations, try the [Color Contrast Checker](#).

YUV 45.0730, -3.9800, 16.5990

Background



This preview shows how black text looks on a background with the YUV color 45.0730, -3.9800, 16.5990.

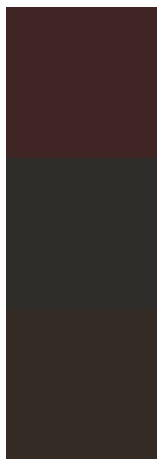


This preview shows how white text looks on a background with the YUV color 45.0730, -3.9800,

Color Blindness Simulation

Color vision deficiency is a very complex topic, and I could not describe the different causes any better than Wikipedia does, so if you want to learn more, you should check out their [article about color blindness](#).

Dichromacy



Original Color

45.0730, -3.9800, 16.5990

Protanopia

44.8430, -1.8946, 1.0147

Deuteranopia

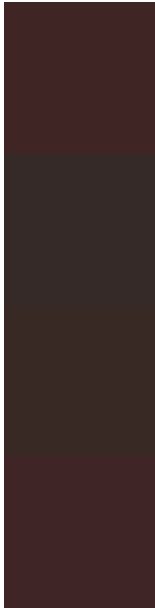
44.8930, -4.3842, 6.2328



Tritanopia

45.3010, -3.1064, 16.3990

Trichromacy



Original Color

45.0730, -3.9800, 16.5990

Protanomaly

45.0610, -2.4951, 6.9625

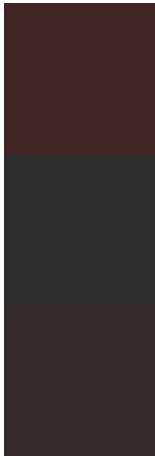
Deuteranomaly

44.9150, -4.3951, 9.7215

Tritanomaly

45.1870, -3.5432, 16.4990

Monochromacy



Original Color

45.0730, -3.9800, 16.5990

Achromatopsia

45.0000, 0.0000, 0.0000

Achromatomaly

44.9900, -1.4741, 6.1478

CSS Examples

Text

The CSS property to change the color of the text to YUV 45.0730, -3.9800, 16.5990 is called "color". The color property can be set on classes, ids or directly on the HTML element.

This example shows how text in the color `rgb(64, 37, 37)` looks like.

```
.text, #text, p{  
    color:rgb(64, 37, 37)  
}
```

If you want to add a text shadow in that color use the text-shadow property, you can generate a text shadow directly with our [CSS Text Shadow Generator](#).

Here you see how black text with a 4 pixel rgb(64, 37, 37) colored shadow looks like.

```
.shadow{ text-shadow: 4px 4px 2px rgb(64, 37, 37) }
```

Border

The CSS property to change the border of an element to YUV 45.0730, -3.9800, 16.5990 is called "border". The border property can be set on classes, ids or directly on the HTML element.

This example shows the color as border, it can be applied via the CSS property "border" or "border-color".

```
.border, #border, table{ border:4px solid rgb(64, 37, 37) }
```


If only the border color should be changed use the property `border-color`.

```
.border{ border-color:rgb(64, 37, 37) }
```

If you want to add a box shadow in that color use:

Here you see how a box with a 4 pixel `rgb(64, 37, 37)` colored shadow looks like.

```
.boxshadow{ -moz-box-shadow:4px 4px 4px  
4px rgb(64, 37, 37); -webkit-box-  
shadow:4px 4px 4px 4px rgb(64, 37, 37);  
box-shadow:4px 4px 4px 4px rgb(64, 37, 37)  
}
```

Background

The CSS property to change the background color of an element to YUV 45.0730, -3.9800, 16.5990 is called "background". The background property can be set on classes, ids or directly on the HTML element.

```
.background, #background, body{  
background: rgb(64, 37, 37) }
```

If only the background color should be changed can be used:

```
.background{ background-color: rgb(64, 37,  
37) }
```

This example shows the color as background, it is applied via the CSS property "background".

To optimize and compress your CSS code, you can use our [online CSS compressor and optimizer](#) based on csstidy. If you want to create a linear or radial gradient as background or border, check our [CSS Gradient Generator](#).

Hey! You found this booklet interesting? Support Converting Colors with the new Membership Option!

The pro membership hides all ads, plus gives you double the colors in the color bucket, and more awesome pro features!

[Learn more, Memberships starting at \\$2.50/m!](#)

**Follow me
on Twitter!**

@ConvertingColor