

# Converting Colors

YUV(45.1270, -2.5276, 17.4286)

Have a look what the booklet for  
YUV(45.1270, -2.5276, 17.4286)  
contains.

<b>YUV(45.1270, -2.5276, 17.4286)</b> .....	3
<b><i>Conversions</i></b> .....	4
<b><i>Details</i></b> .....	6
<b><i>Harmonies</i></b> .....	12
<b><i>Previews</i></b> .....	24
<b><i>Color Blindness Simulation</i></b> .....	28
<b><i>CSS Examples</i></b> .....	31

# Color

**YUV(45.1270, -2.5276,  
17.4286)**

# Conversions

## Conversions Part 1

<b>Format</b>	<b>Color</b>
Hex	412428
RGB	65, 36, 40
RGB Percent	25%, 14%, 16%
CMY	0.7451, 0.8588, 0.8431
CMYK	0.00, 0.45, 0.38, 0.75
HSL	352°, 29%, 20%
HSV	352°, 45%, 25%
XYZ	3.1939, 2.5388, 2.3292
YIQ	45.1270, 16.0000, 7.3920

# Conversions

## Conversions Part 2

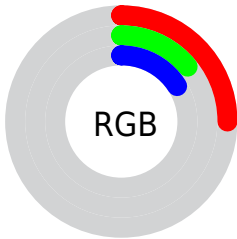
Format	Color
<a href="#">RYB</a>	65, 36, 40
Decimal	4269096
CIELab	18.09, 14.39, 3.26
CIELCh	18, 14.760, 12.767
Yxy	2.5388, 0.3962, 0.3149
Android (android.graphics.Color)	4282459176 (0xFF412428)
YUV	45.1270, -2.5276, 17.4286
Hunter-Lab	15.9335, 7.8964, 2.4864

# Details

The YUV color **45.1270, -2.5276, 17.4286** is a dark color, and the websafe version is hex **663333**. A complement of this color would be **55.8730, 2.5276, -17.4286**, and the grayscale version is **45.0000, 0.0000, 0.0000**.

A 20% lighter version of the original color is **91.3230, -3.1172, 19.8877**, and **4.4850, -2.2111, 9.2217** is the 20% darker color. If you saturate the color by 10%, you get **40.9210, -3.4121, 21.1173**, and if you desaturate by 10%, it is **49.9200, -1.9326, 13.2252**.

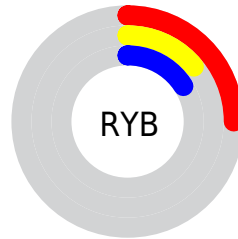
# Distribution



Red (25%)

Green (14%)

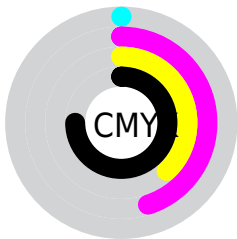
Blue (16%)



Red (25%)

Yellow (14%)

Blue (16%)

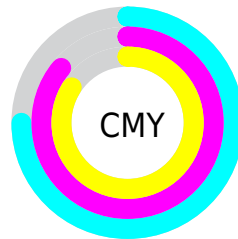


Cyan (0%)

Magenta (45%)

Yellow (38%)

Black (75%)



Cyan (75%)

Magenta (86%)

Yellow (84%)

# Brightness & Saturation Gradients

These gradients show how the YUV color 45.1270, -2.5276, 17.4286 changes by changing the brightness by 10 percent. The first figure shows a shift by +10% for each color and the second figure -10%.

Similar to the brightness gradients but the following saturation gradients show a change of the YUV color 45.1270, -2.5276, 17.4286 by changing the saturation by 10% instead.



■ 45.1270, -2.5276,  
17.4286

■ 45.1270, -2.5276,  
17.4286

■ 255.0000, 0.0000,  
0.0000

■ 23.6430, -1.7960,  
16.0991

■ 91.3230, -3.1172,  
19.8877

■ 4.4850, -2.2111,  
9.2217

■ 115.9210, -3.4121,  
21.1173

■ 0.0000, 0.0000,  
0.0000

■ 142.1060, -3.9963,  
21.8320

■ 168.5190, -3.7069,  
22.3468

■ 195.8180, -3.8543,  
22.9616

■ 223.4160, -4.1491,

24.1912

244.9410, -0.4639,  
8.8217

45.1270, -2.5276,  
17.4286

45.1270, -2.5276,  
17.4286

40.9210, -3.4121,  
21.1173

49.9200, -1.9326,  
13.2252

36.2420, -3.5703,  
25.2208

54.0120, -1.4849,  
9.6365

31.4490, -4.1654,  
29.4242

58.8050, -0.8899,  
5.4330

27.3570, -4.6130,  
33.0129

62.8970, -0.4422,  
1.8443

23.1510, -5.4974,  
36.7016

67.6900, 0.1528,  
-2.3591

■ 20.4610, -5.6503,  
39.0607

■ 71.8960, 1.0373,  
-6.0478

■ 76.5750, 1.1955,  
-10.1513

■ 80.7810, 2.0800,  
-13.8399

■ 84.8730, 2.5276,  
-17.4286

# Harmonies

## Analogous

The Analogous color harmony consists of three colors that are next to each other on the color wheel.



45.7720, 2.5774, 13.3550



45.1270, -2.5276, 17.4286



44.5630, -7.1796, 16.1692

# Triad

The Triadic color harmony groups three colors that are evenly spaced from another and form a triangle on the color wheel.



45.1270, -2.5276, 17.4286



41.8330, -6.8197, -5.9925



40.2670, 11.7004, -19.5282

# Complementary

The Complementary color scheme is a pair of colors which are on the opposite of each other on the color wheel.



45.1270, -2.5276, 17.4286



55.8730, 2.5276, -17.4286

# Split Complementary

Split-complementary colors differ from the complementary color scheme. The scheme consists of three colors, the original color and two neighbors of the complement color.



36.2720, 10.7119, -29.1795



45.1270, -2.5276, 17.4286



39.6730, -0.8248, -15.4992

# Square

The Square scheme is like the rectangle color scheme, but the four colors are evenly spaced on the color wheel.



45.1270, -2.5276, 17.4286



43.0900, -9.9044, 3.4291



37.0290, 5.9017, -26.3354



44.0020, 10.3520, -7.0178



# Rectangle

The Rectangle color scheme consists of four colors that form a rectangle on the color wheel.



45.1270, -2.5276, 17.4286



44.0850, -8.9159, 13.0805



37.0290, 5.9017, -26.3354



38.9460, 11.8586, -23.6316

# Sweetspot

The Sweet Spot groups the original color and five complimentary colors.



45.1270, -2.5276, 17.4286



76.5170, -0.7479, 6.5626



46.7810, 8.9820, 12.4701



38.2070, -0.5951, 4.2035



171.0000, 0.0000, 0.0000



43.0000, 0.0000, 0.0000



# Same Dimension

The Same Dimension uses a secret algorithm to generate beautiful new colors.



45.1270, -2.5276, 17.4286



53.1390, -4.0125, 27.0651



50.5410, -7.1687, 12.6805



30.8970, -0.4422, 1.8443



30.4850, -8.6201, 58.3337



70.5100, -19.4784, 134.6107



# Inverse Universe

The Inverse Universe completely reimagines the original color for something new.



45.1270, -2.5276, 17.4286



53.1390, -4.0125, 27.0651



50.4590, 7.1687, -12.6805



30.8970, -0.4422, 1.8443



30.4850, -8.6201, 58.3337

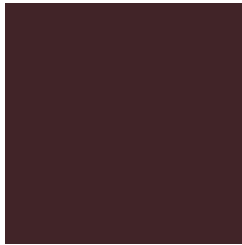


70.5100, -19.4784, 134.6107



# Previews

## White Background



This preview shows how the YUV color 45.1270, -2.5276, 17.4286 looks on a white background.

## Color Contrast Check

Large Text (above 18pt) WCAG AA ✓ Pass

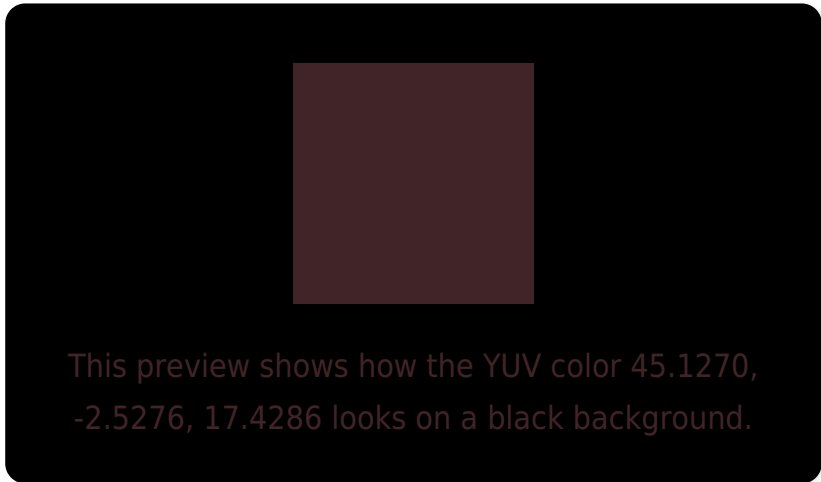
Any Text WCAG AA ✓ Pass

Large Text (above 18pt) WCAG AAA ✓ Pass

Any Text WCAG AAA ✓ Pass



# Black Background



## Color Contrast Check

Large Text (above 18pt) WCAG AA × Fail

Any Text WCAG AA × Fail

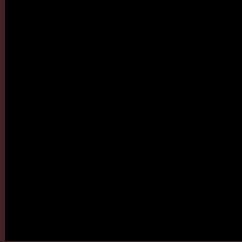
Large Text (above 18pt) WCAG AAA × Fail

Any Text WCAG AAA × Fail

If you want to check with other color combinations, try the [Color Contrast Checker](#).

**YUV 45.1270, -2.5276, 17.4286**

## **Background**



This preview shows how black text looks on a background with the YUV color 45.1270, -2.5276, 17.4286.



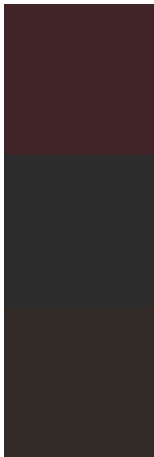
This preview shows how white text looks on a background with the YUV color 45.1270, -2.5276,



# Color Blindness Simulation

Color vision deficiency is a very complex topic, and I could not describe the different causes any better than Wikipedia does, so if you want to learn more, you should check out their [article about color blindness](#).

## Dichromacy



### Original Color

45.1270, -2.5276, 17.4286

### Protanopia

44.4130, 0.2894, 0.5148

### Deuteranopia

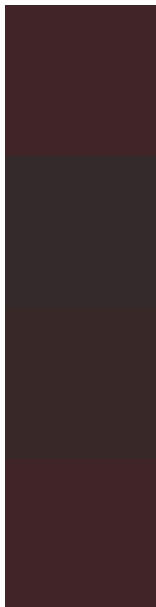
44.9360, -2.9264, 5.3181



## Tritanopia

45.0130, -2.9644, 17.5286

# Trichromacy



## Original Color

45.1270, -2.5276, 17.4286

## Protanomaly

44.5170, -0.7479, 6.5626

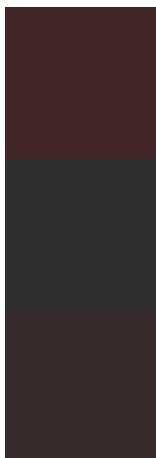
## Deuteranomaly

44.6700, -2.7953, 9.9364

## Tritanomaly

45.0130, -2.9644, 17.5286

# Monochromacy



## Original Color

45.1270, -2.5276, 17.4286

## Achromatopsia

45.0000, 0.0000, 0.0000

## Achromatomaly

45.1040, -1.0373, 6.0478

# CSS Examples

## Text

The CSS property to change the color of the text to YUV 45.1270, -2.5276, 17.4286 is called "color". The color property can be set on classes, ids or directly on the HTML element.

This example shows how text in the color `rgb(65, 36, 40)` looks like.

```
.text, #text, p{  
    color:rgb(65, 36, 40)  
}
```

If you want to add a text shadow in that color use the text-shadow property, you can generate a text shadow directly with our [CSS Text Shadow Generator](#).

Here you see how black text with a 4 pixel rgb(65, 36, 40) colored shadow looks like.

```
.shadow{ text-shadow: 4px 4px 2px rgb(65, 36, 40) }
```

## Border

The CSS property to change the border of an element to YUV 45.1270, -2.5276, 17.4286 is called "border". The border property can be set on classes, ids or directly on the HTML element.

This example shows the color as border, it can be applied via the CSS property "border" or "border-color".

```
.border, #border, table{ border:4px solid rgb(65, 36, 40) }
```



If only the border color should be changed use the property `border-color`.

```
.border{ border-color:rgb(65, 36, 40) }
```

If you want to add a box shadow in that color use:

Here you see how a box with a 4 pixel `rgb(65, 36, 40)` colored shadow looks like.

```
.boxshadow{ -moz-box-shadow:4px 4px 4px  
4px rgb(65, 36, 40); -webkit-box-  
shadow:4px 4px 4px 4px rgb(65, 36, 40);  
box-shadow:4px 4px 4px 4px rgb(65, 36, 40)  
}
```

# Background

The CSS property to change the background color of an element to YUV 45.1270, -2.5276, 17.4286 is called "background". The background property can be set on classes, ids or directly on the HTML element.

```
.background, #background, body{  
background: rgb(65, 36, 40) }
```

If only the background color should be changed can be used:

```
.background{ background-color: rgb(65, 36,  
40) }
```

This example shows the color as background, it is applied via the CSS property "background".

To optimize and compress your CSS code, you can use our [online CSS compressor and optimizer](#) based on csstidy. If you want to create a linear or radial gradient as background or border, check our [CSS Gradient Generator](#).

# Hey! You found this booklet interesting? Support Converting Colors with the new Membership Option!

The pro membership hides all ads, plus gives you double the colors in the color bucket, and more awesome pro features!

**[Learn more, Memberships starting at \\$2.50/m!](#)**

**Follow me  
on Twitter!**

@ConvertingColor