

Converting Colors

YUV(45.7370, -7.7583, 15.1397)

Have a look what the booklet for
YUV(45.7370, -7.7583, 15.1397)
contains.

YUV(45.7370, -7.7583, 15.1397)	3
<i>Conversions</i>	4
<i>Details</i>	6
<i>Harmonies</i>	12
<i>Previews</i>	24
<i>Color Blindness Simulation</i>	28
<i>CSS Examples</i>	31

Color

**YUV(45.7370, -7.7583,
15.1397)**

Conversions

Conversions Part 1

Format	Color
Hex	3F281E
RGB	63, 40, 30
RGB Percent	25%, 16%, 12%
CMY	0.7529, 0.8431, 0.8824
CMYK	0.00, 0.37, 0.52, 0.75
HSL	18°, 35%, 18%
HSV	18°, 52%, 25%
XYZ	3.0430, 2.6681, 1.5829
YIQ	45.7370, 16.9180, 1.7660

Conversions

Conversions Part 2

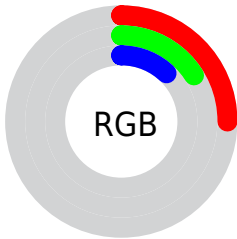
Format	Color
RYB	63, 44, 30
Decimal	4139038
CIELab	18.66, 9.36, 10.95
CIELCh	19, 14.406, 49.477
Yxy	2.6681, 0.4172, 0.3658
Android (android.graphics.Color)	4282329118 (0xFF3F281E)
YUV	45.7370, -7.7583, 15.1397
Hunter-Lab	16.3343, 4.6692, 5.6884

Details

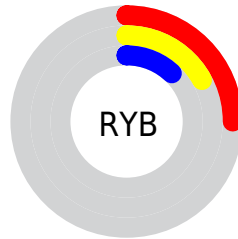
The YUV color **45.7370, -7.7583, 15.1397** is a dark color, and the websafe version is hex **333333**. A complement of this color would be **47.2630, 7.7583, -15.1397**, and the grayscale version is **46.0000, 0.0000, 0.0000**.

A 20% lighter version of the original color is **91.8190, -8.7848, 17.6987**, and **2.6910, -1.3267, 5.5330** is the 20% darker color. If you saturate the color by 10%, you get **42.7050, -9.2216, 17.7987**, and if you desaturate by 10%, it is **48.7690, -6.2951, 12.4806**.

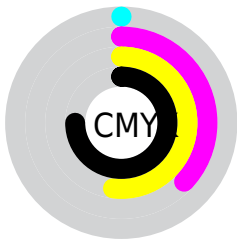
Distribution



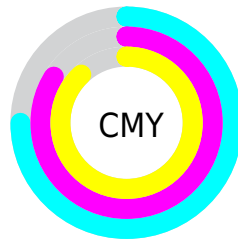
- Red (25%)
- Green (16%)
- Blue (12%)



- Red (25%)
- Yellow (17%)
- Blue (12%)



- Cyan (0%)
- Magenta (37%)
- Yellow (52%)
- Black (75%)



- Cyan (75%)
- Magenta (84%)
- Yellow (88%)

Brightness & Saturation Gradients

These gradients show how the YUV color 45.7370, -7.7583, 15.1397 changes by changing the brightness by 10 percent. The first figure shows a shift by +10% for each color and the second figure -10%.

Similar to the brightness gradients but the following saturation gradients show a change of the YUV color 45.7370, -7.7583, 15.1397 by changing the saturation by 10% instead.

■ 45.7370, -7.7583,
15.1397

■ 45.7370, -7.7583,
15.1397

■ 255.0000, 0.0000,
0.0000

■ 23.9820, -9.3581,
14.9248

■ 91.8190, -8.7848,
17.6987

■ 2.6910, -1.3267,
5.5330

■ 117.0040, -9.3690,
18.4135

■ 0.0000, 0.0000,
0.0000

■ 142.4880,
-10.1006, 19.7430

■ 168.7870,
-10.2480, 20.3578

■ 196.0860,
-10.3954, 20.9726

■ 224.2710,

-10.9796, 21.6873

■ 245.6930, -7.7366,
8.1622

■ 45.7370, -7.7583,
15.1397

■ 45.7370, -7.7583,
15.1397

■ 42.7050, -9.2216,
17.7987

■ 48.7690, -6.2951,
12.4806

■ 38.9720, -10.8322,
21.0726

■ 52.5020, -4.6845,
9.2067

■ 35.9400, -12.2954,
23.7316

■ 55.5340, -3.2213,
6.5477

■ 32.3210, -13.4693,
26.9055

■ 59.1530, -2.0474,
3.3738

■ 29.9900, -14.7851,
28.9498

■ 62.2990, -0.1474,
0.6148

■ 65.3310, 1.3158,
-2.0443

■ 68.9500, 2.4897,
-5.2181

■ 71.9820, 3.9529,
-7.8772

■ 75.7150, 5.5635,
-11.1511

Harmonies

Analogous

The Analogous color harmony consists of three colors that are next to each other on the color wheel.



46.4860, -3.6906, 17.1138



45.7370, -7.7583, 15.1397



45.4220, -10.0680, 9.2769

Triad

The Triadic color harmony groups three colors that are evenly spaced from another and form a triangle on the color wheel.



45.7370, -7.7583, 15.1397



40.8900, 0.0542, -17.4435



45.4970, 9.6150, -3.9439

Complementary

The Complementary color scheme is a pair of colors which are on the opposite of each other on the color wheel.



45.7370, -7.7583, 15.1397



47.2630, 7.7583, -15.1397

Split Complementary

Split-complementary colors differ from the complementary color scheme. The scheme consists of three colors, the original color and two neighbors of the complement color.



43.1750, 11.2527, -15.9395



45.7370, -7.7583, 15.1397



38.2570, 6.7753, -26.5354

Square

The Square scheme is like the rectangle color scheme, but the four colors are evenly spaced on the color wheel.



45.7370, -7.7583, 15.1397



42.5770, -5.2145, -7.5220



38.9950, 10.8485, -26.3056



46.6510, 6.0881, 7.3221

Rectangle

The Rectangle color scheme consists of four colors that form a rectangle on the color wheel.



45.7370, -7.7583, 15.1397



44.5030, -9.6150, 3.9439



38.9950, 10.8485, -26.3056



44.7030, 10.4994, -7.6325

Sweetspot

The Sweet Spot groups the original color and five complimentary colors.



45.7370, -7.7583, 15.1397



75.2350, -3.0739, 5.9329



42.4890, 5.1819, 17.9881



36.5660, -1.7580, 3.8886



168.0000, 0.0000, 0.0000



41.0000, 0.0000, 0.0000

Same Dimension

The Same Dimension uses a secret algorithm to generate beautiful new colors.



45.7370, -7.7583, 15.1397



54.9400, -12.2954, 23.7316



55.1290, -12.3886, 6.9029



28.8970, -0.4422, 1.8443



45.1290, -22.2486, 42.8599



105.7070, -52.1136, 101.9890

Inverse Universe

The Inverse Universe completely reimagines the original color for something new.



47.2630, 7.7583, -15.1397



57.0600, 12.2954, -23.7316



37.8710, 12.3886, -6.9029



29.5160, 0.7316, -1.3295



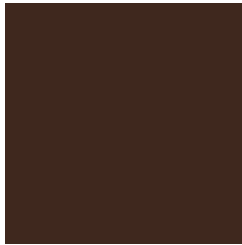
49.4580, 21.9592, -43.3747



116.2930, 52.1136, -101.9890

Previews

White Background



This preview shows how the YUV color 45.7370, -7.7583, 15.1397 looks on a white background.

Color Contrast Check

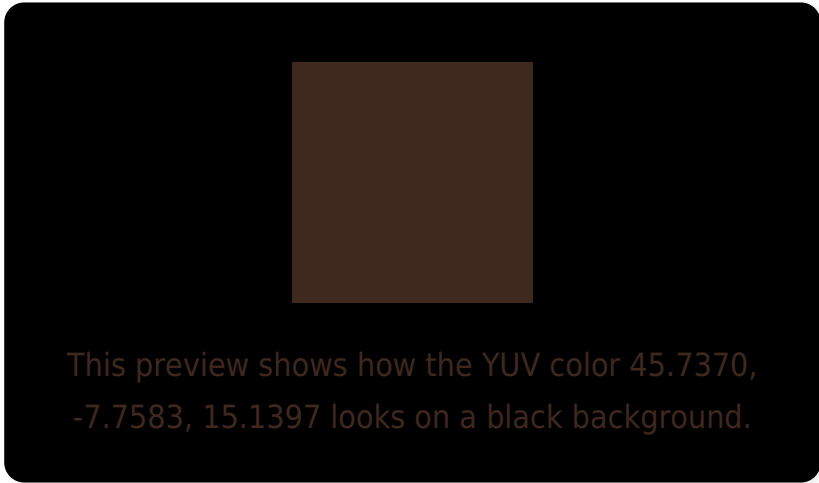
Large Text (above 18pt) WCAG AA ✓ Pass

Any Text WCAG AA ✓ Pass

Large Text (above 18pt) WCAG AAA ✓ Pass

Any Text WCAG AAA ✓ Pass

Black Background



Color Contrast Check

Large Text (above 18pt) WCAG AA × Fail

Any Text WCAG AA × Fail

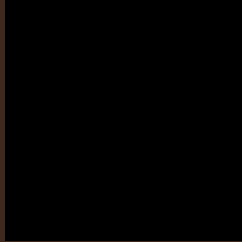
Large Text (above 18pt) WCAG AAA × Fail

Any Text WCAG AAA × Fail

If you want to check with other color combinations, try the [Color Contrast Checker](#).

YUV 45.7370, -7.7583, 15.1397

Background



This preview shows how black text looks on a background with the YUV color 45.7370, -7.7583, 15.1397.

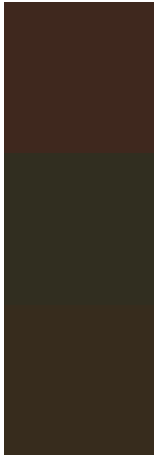


This preview shows how white text looks on a background with the YUV color 45.7370, -7.7583,

Color Blindness Simulation

Color vision deficiency is a very complex topic, and I could not describe the different causes any better than Wikipedia does, so if you want to learn more, you should check out their [article about color blindness](#).

Dichromacy



Original Color

45.7370, -7.7583, 15.1397

Protanopia

45.3010, -6.5574, 3.2440

Deuteranopia

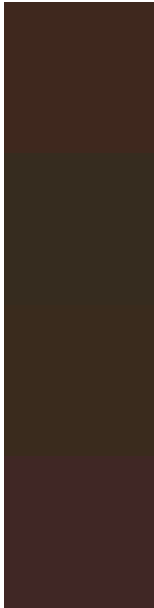
45.5790, -8.1734, 8.2622



Tritanopia

46.1160, -2.5222, 15.6843

Trichromacy



Original Color

45.7370, -7.7583, 15.1397

Protanomaly

45.5080, -7.1524, 7.4475

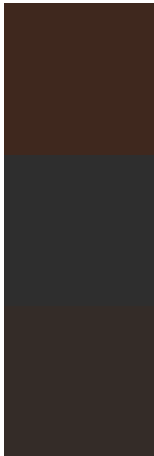
Deuteranomaly

45.8890, -8.3263, 10.6213

Tritanomaly

46.2470, -4.5588, 15.5694

Monochromacy



Original Color

45.7370, -7.7583, 15.1397

Achromatopsia

46.0000, 0.0000, 0.0000

Achromatomaly

45.9360, -2.9264, 5.3181

CSS Examples

Text

The CSS property to change the color of the text to YUV 45.7370, -7.7583, 15.1397 is called "color". The color property can be set on classes, ids or directly on the HTML element.

This example shows how text in the color `rgb(63, 40, 30)` looks like.

```
.text, #text, p{  
    color:rgb(63, 40, 30)  
}
```

If you want to add a text shadow in that color use the text-shadow property, you can generate a text shadow directly with our [CSS Text Shadow Generator](#).

Here you see how black text with a 4 pixel rgb(63, 40, 30) colored shadow looks like.

```
.shadow{ text-shadow: 4px 4px 2px rgb(63, 40, 30) }
```

Border

The CSS property to change the border of an element to YUV 45.7370, -7.7583, 15.1397 is called "border". The border property can be set on classes, ids or directly on the HTML element.

This example shows the color as border, it can be applied via the CSS property "border" or "border-color".

```
.border, #border, table{ border:4px solid rgb(63, 40, 30) }
```


If only the border color should be changed use the property border-color.

```
.border{ border-color:rgb(63, 40, 30) }
```

If you want to add a box shadow in that color use:

Here you see how a box with a 4 pixel rgb(63, 40, 30) colored shadow looks like.

```
.boxshadow{ -moz-box-shadow:4px 4px 4px  
4px rgb(63, 40, 30); -webkit-box-  
shadow:4px 4px 4px 4px rgb(63, 40, 30);  
box-shadow:4px 4px 4px 4px rgb(63, 40, 30)  
}
```

Background

The CSS property to change the background color of an element to YUV 45.7370, -7.7583, 15.1397 is called "background". The background property can be set on classes, ids or directly on the HTML element.

```
.background, #background, body{  
background: rgb(63, 40, 30) }
```

If only the background color should be changed can be used:

```
.background{ background-color: rgb(63, 40,  
30) }
```

This example shows the color as background, it is applied via the CSS property "background".

To optimize and compress your CSS code, you can use our [online CSS compressor and optimizer](#) based on csstidy. If you want to create a linear or radial gradient as background or border, check our [CSS Gradient Generator](#).

Hey! You found this booklet interesting? Support Converting Colors with the new Membership Option!

The pro membership hides all ads, plus gives you double the colors in the color bucket, and more awesome pro features!

[Learn more, Memberships starting at \\$2.50/m!](#)

**Follow me
on Twitter!**

@ConvertingColor