

Converting Colors

YUV(46.2900, -3.1010, 14.6547)

Have a look what the booklet for
YUV(46.2900, -3.1010, 14.6547)
contains.

YUV(46.2900, -3.1010, 14.6547)	3
<i>Conversions</i>	4
<i>Details</i>	6
<i>Harmonies</i>	12
<i>Previews</i>	24
<i>Color Blindness Simulation</i>	28
<i>CSS Examples</i>	31

Color

**YUV(46.2900, -3.1010,
14.6547)**

Conversions

Conversions Part 1

Format	Color
Hex	3F2728
RGB	63, 39, 40
RGB Percent	25%, 15%, 16%
CMY	0.7529, 0.8471, 0.8431
CMYK	0.00, 0.38, 0.37, 0.75
HSL	358°, 24%, 20%
HSV	358°, 38%, 25%
XYZ	3.1584, 2.6610, 2.3546
YIQ	46.2900, 13.9830, 5.3990

Conversions

Conversions Part 2

Format	Color
RYB	63, 39, 40
Decimal	4138792
CIELab	18.63, 11.47, 3.99
CIELCh	19, 12.148, 19.169
Yxy	2.6610, 0.3864, 0.3255
Android (android.graphics.Color)	4282328872 (0xFF3F2728)
YUV	46.2900, -3.1010, 14.6547
Hunter-Lab	16.3126, 6.0139, 2.8606

Details

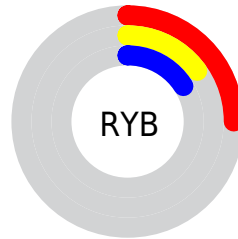
The YUV color **46.2900, -3.1010, 14.6547** is a dark color, and the websafe version is hex **333333**. A complement of this color would be **55.7100, 3.1010, -14.6547**, and the grayscale version is **46.0000, 0.0000, 0.0000**.

A 20% lighter version of the original color is **92.4860, -3.6906, 17.1138**, and **4.1860, -2.0637, 8.6069** is the 20% darker color. If you saturate the color by 10%, you get **42.0840, -3.9854, 18.3433**, and if you desaturate by 10%, it is **50.4960, -2.2165, 10.9660**.

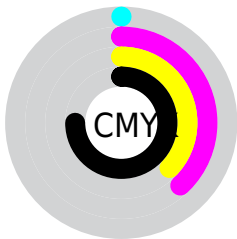
Distribution



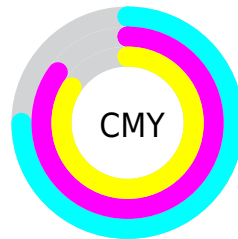
- Red (25%)
- Green (15%)
- Blue (16%)



- Red (25%)
- Yellow (15%)
- Blue (16%)



- Cyan (0%)
- Magenta (38%)
- Yellow (37%)
- Black (75%)



- Cyan (75%)
- Magenta (85%)
- Yellow (84%)

Brightness & Saturation Gradients

These gradients show how the YUV color 46.2900, -3.1010, 14.6547 changes by changing the brightness by 10 percent. The first figure shows a shift by +10% for each color and the second figure -10%.

Similar to the brightness gradients but the following saturation gradients show a change of the YUV color 46.2900, -3.1010, 14.6547 by changing the saturation by 10% instead.

■ 46.2900, -3.1010,
14.6547

■ 46.2900, -3.1010,
14.6547

■ 255.0000, 0.0000,
0.0000

■ 25.3930, -2.6587,
12.8103

■ 92.4860, -3.6906,
17.1138

■ 4.1860, -2.0637,
8.6069

■ 117.3720, -4.1274,
17.2138

■ 0.0000, 0.0000,
0.0000

■ 142.9700, -4.4222,
18.4433

■ 169.3830, -4.1328,
18.9581

■ 196.6820, -4.2802,
19.5729

■ 224.8670, -4.8644,

20.2876

246.7020, -1.3321,
7.2773

46.2900, -3.1010,
14.6547

46.2900, -3.1010,
14.6547

42.0840, -3.9854,
18.3433

50.4960, -2.2165,
10.9660

37.2910, -4.5805,
22.5468

55.2890, -1.6215,
6.7625

33.0850, -5.4649,
26.2355

59.4950, -0.7370,
3.0739

28.8790, -6.3493,
29.9241

63.7010, 0.1474,
-0.6148

24.0860, -6.9444,
34.1276

68.4940, 0.7425,
-4.8182

■ 19.8800, -7.8288,
37.8162

■ 72.7000, 1.6269,
-8.5069

■ 19.1790, -7.9762,
38.4310

■ 76.9060, 2.5113,
-12.1956

■ 81.1120, 3.3958,
-15.8842

■ 85.9050, 3.9908,
-20.0877

Harmonies

Analogous

The Analogous color harmony consists of three colors that are next to each other on the color wheel.



46.7180, 1.1250, 12.5253



46.2900, -3.1010, 14.6547



45.9540, -6.8793, 13.1953

Triad

The Triadic color harmony groups three colors that are evenly spaced from another and form a triangle on the color wheel.



46.2900, -3.1010, 14.6547



43.4030, -4.6357, -6.4924



43.3280, 9.2053, -12.5657

Complementary

The Complementary color scheme is a pair of colors which are on the opposite of each other on the color wheel.



46.2900, -3.1010, 14.6547



55.7100, 3.1010, -14.6547

Split Complementary

Split-complementary colors differ from the complementary color scheme. The scheme consists of three colors, the original color and two neighbors of the complement color.



41.0560, 8.3534, -19.3431



46.2900, -3.1010, 14.6547



41.9120, 0.0434, -13.9548

Square

The Square scheme is like the rectangle color scheme, but the four colors are evenly spaced on the color wheel.



46.2900, -3.1010, 14.6547



44.6490, -7.7150, 1.1848



40.5460, 5.1538, -19.7728



45.4540, 8.1572, -3.0292

Rectangle

The Rectangle color scheme consists of four colors that form a rectangle on the color wheel.



46.2900, -3.1010, 14.6547



45.5900, -8.1789, 10.0066



40.5460, 5.1538, -19.7728



42.7190, 9.5055, -15.5396

Sweetspot

The Sweet Spot groups the original color and five complimentary colors.



46.2900, -3.1010, 14.6547



75.6910, -1.3267, 5.5330



48.6130, 7.0928, 11.7404



36.9080, -0.4476, 3.5887



168.0000, 0.0000, 0.0000



41.0000, 0.0000, 0.0000

Same Dimension

The Same Dimension uses a secret algorithm to generate beautiful new colors.



46.2900, -3.1010, 14.6547



55.5900, -4.7279, 23.1616



52.6330, -6.7211, 9.0919



28.8970, -0.4422, 1.8443



28.5620, -12.1091, 57.3891



67.4040, -28.7932, 135.5807

Inverse Universe

The Inverse Universe completely reimagines the original color for something new.



46.2900, -3.1010, 14.6547



55.5900, -4.7279, 23.1616



49.3670, 6.7211, -9.0919



28.8970, -0.4422, 1.8443



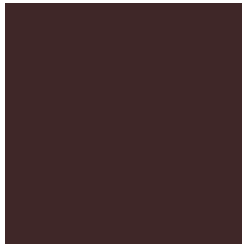
28.5620, -12.1091, 57.3891



67.4040, -28.7932, 135.5807

Previews

White Background



This preview shows how the YUV color 46.2900, -3.1010, 14.6547 looks on a white background.

Color Contrast Check

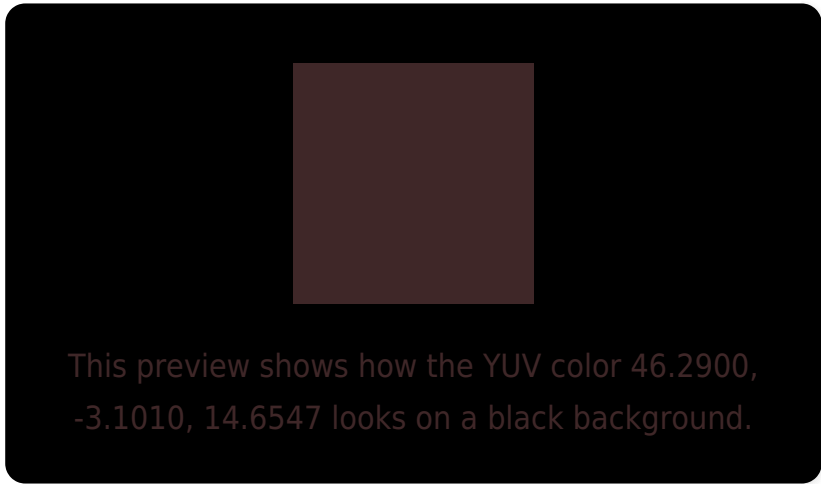
Large Text (above 18pt) WCAG AA ✓ Pass

Any Text WCAG AA ✓ Pass

Large Text (above 18pt) WCAG AAA ✓ Pass

Any Text WCAG AAA ✓ Pass

Black Background



Color Contrast Check

Large Text (above 18pt) WCAG AA × Fail

Any Text WCAG AA × Fail

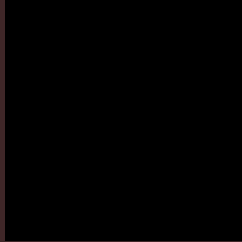
Large Text (above 18pt) WCAG AAA × Fail

Any Text WCAG AAA × Fail

If you want to check with other color combinations, try the [Color Contrast Checker](#).

YUV 46.2900, -3.1010, 14.6547

Background



This preview shows how black text looks on a background with the YUV color 46.2900, -3.1010, 14.6547.

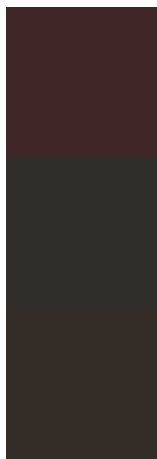


This preview shows how white text looks on a background with the YUV color 46.2900, -3.1010,

Color Blindness Simulation

Color vision deficiency is a very complex topic, and I could not describe the different causes any better than Wikipedia does, so if you want to learn more, you should check out their [article about color blindness](#).

Dichromacy



Original Color

46.2900, -3.1010, 14.6547

Protanopia

45.9570, -1.4578, 0.9147

Deuteranopia

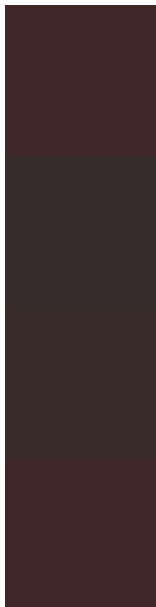
45.8220, -3.3632, 5.4181



Tritanopia

46.5180, -2.2274, 14.4547

Trichromacy



Original Color

46.2900, -3.1010, 14.6547

Protanomaly

45.8760, -1.9109, 6.2477

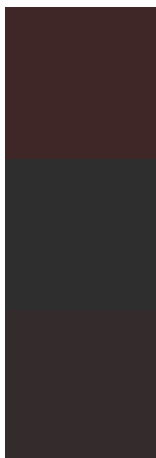
Deuteranomaly

45.8440, -3.3741, 8.9068

Tritanomaly

46.4040, -2.6642, 14.5547

Monochromacy



Original Color

46.2900, -3.1010, 14.6547

Achromatopsia

46.0000, 0.0000, 0.0000

Achromatomaly

45.8050, -0.8899, 5.4330

CSS Examples

Text

The CSS property to change the color of the text to YUV 46.2900, -3.1010, 14.6547 is called "color". The color property can be set on classes, ids or directly on the HTML element.

This example shows how text in the color `rgb(63, 39, 40)` looks like.

```
.text, #text, p{  
    color:rgb(63, 39, 40)  
}
```

If you want to add a text shadow in that color use the text-shadow property, you can generate a text shadow directly with our [CSS Text Shadow Generator](#).

Here you see how black text with a 4 pixel rgb(63, 39, 40) colored shadow looks like.

```
.shadow{ text-shadow: 4px 4px 2px rgb(63, 39, 40) }
```

Border

The CSS property to change the border of an element to YUV 46.2900, -3.1010, 14.6547 is called "border". The border property can be set on classes, ids or directly on the HTML element.

This example shows the color as border, it can be applied via the CSS property "border" or "border-color".

```
.border, #border, table{ border:4px solid rgb(63, 39, 40) }
```


If only the border color should be changed use the property border-color.

```
.border{ border-color:rgb(63, 39, 40) }
```

If you want to add a box shadow in that color use:

Here you see how a box with a 4 pixel rgb(63, 39, 40) colored shadow looks like.

```
.boxshadow{ -moz-box-shadow:4px 4px 4px  
4px rgb(63, 39, 40); -webkit-box-  
shadow:4px 4px 4px 4px rgb(63, 39, 40);  
box-shadow:4px 4px 4px 4px rgb(63, 39, 40)  
}
```

Background

The CSS property to change the background color of an element to YUV 46.2900, -3.1010, 14.6547 is called "background". The background property can be set on classes, ids or directly on the HTML element.

```
.background, #background, body{  
background: rgb(63, 39, 40) }
```

If only the background color should be changed can be used:

```
.background{ background-color: rgb(63, 39,  
40) }
```

This example shows the color as background, it is applied via the CSS property "background".

To optimize and compress your CSS code, you can use our [online CSS compressor and optimizer](#) based on csstidy. If you want to create a linear or radial gradient as background or border, check our [CSS Gradient Generator](#).

Hey! You found this booklet interesting? Support Converting Colors with the new Membership Option!

The pro membership hides all ads, plus gives you double the colors in the color bucket, and more awesome pro features!

[Learn more, Memberships starting at \\$2.50/m!](#)

**Follow me
on Twitter!**

@ConvertingColor