

Converting Colors

YUV(46.3150, -11.0013,
28.6647)

Have a look what the booklet for
YUV(46.3150, -11.0013, 28.6647)
contains.

YUV(46.3150, -11.0013, 28.6647)	3
<i>Conversions</i>	4
<i>Details</i>	6
<i>Harmonies</i>	12
<i>Previews</i>	24
<i>Color Blindness Simulation</i>	28
<i>CSS Examples</i>	31

Color

**YUV(46.3150, -11.0013,
28.6647)**

Conversions

Conversions Part 1

Format	Color
Hex	4F2218
RGB	79, 34, 24
RGB Percent	31%, 13%, 9%
CMY	0.6902, 0.8667, 0.9059
CMYK	0.00, 0.57, 0.70, 0.69
HSL	11°, 53%, 20%
HSV	11°, 70%, 31%
XYZ	3.9613, 2.8723, 1.2098
YIQ	46.3150, 30.0300, 6.4300

Conversions

Conversions Part 2

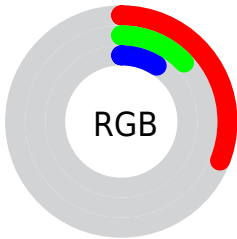
Format	Color
RYB	79, 36, 24
Decimal	5186072
CIELab	19.52, 20.23, 16.62
CIElCh	20, 26.183, 39.406
Yxy	2.8723, 0.4925, 0.3571
Android (android.graphics.Color)	4283376152 (0xFF4F2218)
YUV	46.3150, -11.0013, 28.6647
Hunter-Lab	16.9478, 12.0637, 7.6312

Details

The YUV color **46.3150, -11.0013, 28.6647** is a dark color, and the websafe version is hex **663333**. A complement of this color would be **56.6850, 11.0013, -28.6647**, and the grayscale version is **46.0000, 0.0000, 0.0000**.

A 20% lighter version of the original color is **93.7670, -13.1961, 32.6533**, and **9.6820, -4.2802, 19.5729** is the 20% darker color. If you saturate the color by 10%, you get **41.8810, -12.7593, 32.5534**, and if you desaturate by 10%, it is **50.7490, -9.2433, 24.7761**.

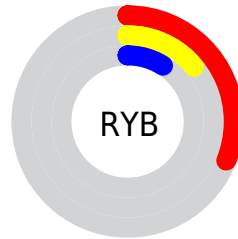
Distribution



Red (31%)

Green (13%)

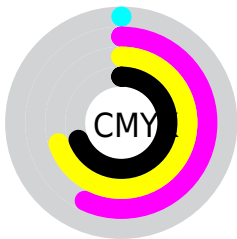
Blue (9%)



Red (31%)

Yellow (14%)

Blue (9%)

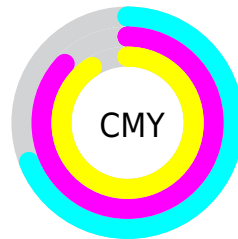


Cyan (0%)

Magenta (57%)

Yellow (70%)

Black (69%)



Cyan (69%)

Magenta (87%)

Yellow (91%)

Brightness & Saturation Gradients

These gradients show how the YUV color 46.3150, -11.0013, 28.6647 changes by changing the brightness by 10 percent. The first figure shows a shift by +10% for each color and the second figure -10%.

Similar to the brightness gradients but the following saturation gradients show a change of the YUV color 46.3150, -11.0013, 28.6647 by changing the saturation by 10% instead.

■ 46.3150, -11.0013,
28.6647

■ 46.3150, -11.0013,
28.6647

■ 254.5440, -1.7472,
0.3999

■ 23.4890, -11.5801,
27.6351

■ 93.7670, -13.1961,
32.6533

■ 9.6820, -4.2802,
19.5729

■ 118.9630,
-13.7858, 35.1124

■ 0.0000, 0.0000,
0.0000

■ 145.3330,
-14.9542, 36.5420

■ 171.9310,
-15.2490, 37.7715

■ 199.4150,
-15.9806, 39.1010

■ 221.6310,

-13.6221, 29.2646

241.8460, -9.7841,
11.5361

46.3150, -11.0013,
28.6647

46.3150, -11.0013,
28.6647

41.8810, -12.7593,
32.5534

50.7490, -9.2433,
24.7761

36.8600, -14.2280,
36.9568

55.7700, -7.7746,
20.3727

32.4260, -15.9860,
40.8454

60.2040, -6.0166,
16.4841

31.8390, -15.6966,
41.3602

65.2250, -4.5479,
12.0807

69.6590, -2.7899,
8.1921

■ 74.5660, -1.7580,
3.8886

■ 79.0000, 0.0000,
0.0000

■ 84.0210, 1.4686,
-4.4034

■ 88.4550, 3.2267,
-8.2920

Harmonies

Analogous

The Analogous color harmony consists of three colors that are next to each other on the color wheel.



46.9160, -2.4236, 30.7687



46.3150, -11.0013, 28.6647



45.4250, -17.9575, 19.7983

Triad

The Triadic color harmony groups three colors that are evenly spaced from another and form a triangle on the color wheel.



46.3150, -11.0013, 28.6647



36.6340, -1.7916, -32.1280



43.2590, 20.5783, -20.3981

Complementary

The Complementary color scheme is a pair of colors which are on the opposite of each other on the color wheel.



46.3150, -11.0013, 28.6647



56.6850, 11.0013, -28.6647

Split Complementary

Split-complementary colors differ from the complementary color scheme. The scheme consists of three colors, the original color and two neighbors of the complement color.



40.5730, 20.9165, -35.5825



46.3150, -11.0013, 28.6647



39.5010, 6.6550, -34.6424

Square

The Square scheme is like the rectangle color scheme, but the four colors are evenly spaced on the color wheel.



46.3150, -11.0013, 28.6647



42.2040, -12.9186, -9.8259



40.9660, 14.8068, -35.9272



49.0020, 13.8030, 6.1372

Rectangle

The Rectangle color scheme consists of four colors that form a rectangle on the color wheel.



46.3150, -11.0013, 28.6647



44.8000, -20.1144, 11.5764



40.9660, 14.8068, -35.9272



39.0400, 22.6583, -34.2381

Sweetspot

The Sweet Spot groups the original color and five complimentary colors.



46.3150, -11.0013, 28.6647



89.0400, -3.9637, 11.3659



45.6890, 11.9853, 29.2137



43.6480, -2.7845, 6.4477



179.0000, 0.0000, 0.0000



51.0000, 0.0000, 0.0000

Same Dimension

The Same Dimension uses a secret algorithm to generate beautiful new colors.



46.3150, -11.0013, 28.6647



51.1060, -17.3073, 44.6340



62.1640, -18.8149, 14.7652



35.7830, -0.8790, 1.9443



41.6510, -20.5339, 52.9261



93.4240, -46.0580, 119.7772

Inverse Universe

The Inverse Universe completely reimagines the original color for something new.



56.6850, 11.0013, -28.6647



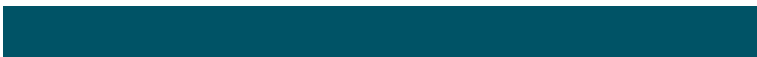
66.8940, 17.3073, -44.6340



40.8360, 18.8149, -14.7652



36.8040, 0.5896, -2.4591



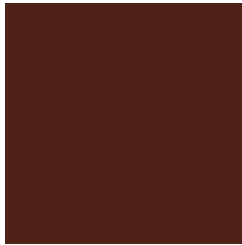
60.3490, 20.5339, -52.9261



136.5760, 46.0580, -119.7772

Previews

White Background



This preview shows how the YUV color 46.3150, -11.0013, 28.6647 looks on a white background.

Color Contrast Check

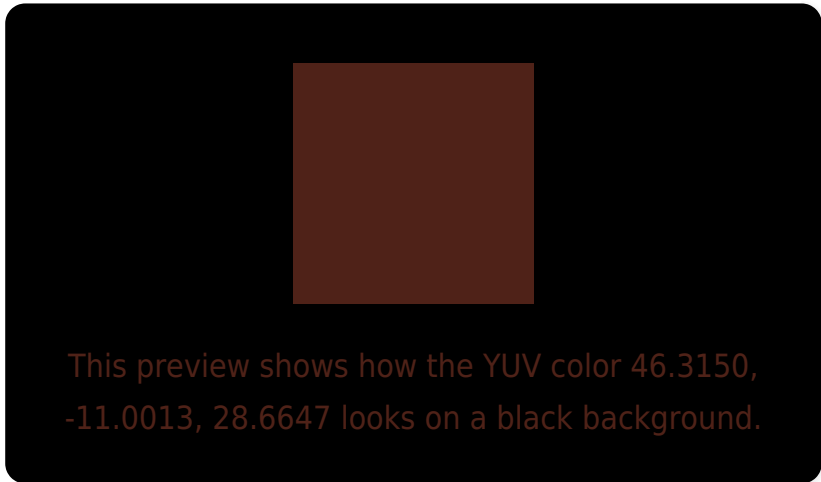
Large Text (above 18pt) WCAG AA ✓ Pass

Any Text WCAG AA ✓ Pass

Large Text (above 18pt) WCAG AAA ✓ Pass

Any Text WCAG AAA ✓ Pass

Black Background



Color Contrast Check

Large Text (above 18pt) WCAG AA × Fail

Any Text WCAG AA × Fail

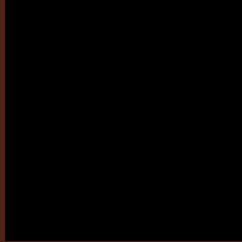
Large Text (above 18pt) WCAG AAA × Fail

Any Text WCAG AAA × Fail

If you want to check with other color combinations, try the [Color Contrast Checker](#).

YUV 46.3150, -11.0013, 28.6647

Background



This preview shows how black text looks on a background with the YUV color 46.3150, -11.0013, 28.6647.

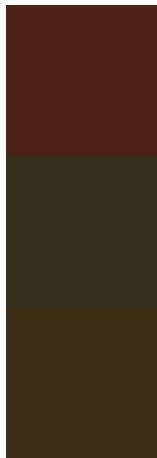


This preview shows how white text looks on a background with the YUV color 46.3150, -11.0013,

Color Blindness Simulation

Color vision deficiency is a very complex topic, and I could not describe the different causes any better than Wikipedia does, so if you want to learn more, you should check out their [article about color blindness](#).

Dichromacy



Original Color

46.3150, -11.0013, 28.6647

Protanopia

47.3290, -9.0362, 4.9735

Deuteranopia

47.3360, -12.9836, 11.1063



Tritanopia

47.2810, -6.0545, 28.6946

Trichromacy



Original Color

46.3150, -11.0013, 28.6647

Protanomaly

46.8570, -9.7895, 13.2804

Deuteranomaly

47.1950, -12.4211, 17.3690

Tritanomaly

46.8250, -7.8017, 29.0945

Monochromacy



Original Color

46.3150, -11.0013, 28.6647

Achromatopsia

46.0000, 0.0000, 0.0000

Achromatomaly

46.3280, -4.1057, 10.2363

CSS Examples

Text

The CSS property to change the color of the text to YUV 46.3150, -11.0013, 28.6647 is called "color". The color property can be set on classes, ids or directly on the HTML element.

This example shows how text in the color `rgb(79, 34, 24)` looks like.

```
.text, #text, p{  
    color:rgb(79, 34, 24)  
}
```

If you want to add a text shadow in that color use the text-shadow property, you can generate a text shadow directly with our [CSS Text Shadow Generator](#).

Here you see how black text with a 4 pixel rgb(79, 34, 24) colored shadow looks like.

```
.shadow{ text-shadow: 4px 4px 2px rgb(79, 34, 24) }
```

Border

The CSS property to change the border of an element to YUV 46.3150, -11.0013, 28.6647 is called "border". The border property can be set on classes, ids or directly on the HTML element.

This example shows the color as border, it can be applied via the CSS property "border" or "border-color".

```
.border, #border, table{ border:4px solid rgb(79, 34, 24) }
```


If only the border color should be changed use the property border-color.

```
.border{ border-color:rgb(79, 34, 24) }
```

If you want to add a box shadow in that color use:

Here you see how a box with a 4 pixel rgb(79, 34, 24) colored shadow looks like.

```
.boxshadow{ -moz-box-shadow:4px 4px 4px  
4px rgb(79, 34, 24); -webkit-box-  
shadow:4px 4px 4px 4px rgb(79, 34, 24);  
box-shadow:4px 4px 4px 4px rgb(79, 34, 24)  
}
```

Background

The CSS property to change the background color of an element to YUV 46.3150, -11.0013, 28.6647 is called "background". The background property can be set on classes, ids or directly on the HTML element.

```
.background, #background, body{  
background: rgb(79, 34, 24) }
```

If only the background color should be changed can be used:

```
.background{ background-color: rgb(79, 34,  
24) }
```

This example shows the color as background, it is applied via the CSS property "background".

To optimize and compress your CSS code, you can use our [online CSS compressor and optimizer](#) based on csstidy. If you want to create a linear or radial gradient as background or border, check our [CSS Gradient Generator](#).

Hey! You found this booklet interesting? Support Converting Colors with the new Membership Option!

The pro membership hides all ads, plus gives you double the colors in the color bucket, and more awesome pro features!

[Learn more, Memberships starting at \\$2.50/m!](#)

**Follow me
on Twitter!**

@ConvertingColor