

Converting Colors

YUV(46.3780, -6.5954, 15.4545)

Have a look what the booklet for
YUV(46.3780, -6.5954, 15.4545)
contains.

YUV(46.3780, -6.5954, 15.4545)	3
<i>Conversions</i>	4
<i>Details</i>	6
<i>Harmonies</i>	12
<i>Previews</i>	24
<i>Color Blindness Simulation</i>	28
<i>CSS Examples</i>	31

Color

**YUV(46.3780, -6.5954,
15.4545)**

Conversions

Conversions Part 1

Format	Color
Hex	402821
RGB	64, 40, 33
RGB Percent	25%, 16%, 13%
CMY	0.7490, 0.8431, 0.8706
CMYK	0.00, 0.38, 0.48, 0.75
HSL	14°, 32%, 19%
HSV	14°, 48%, 25%
XYZ	3.1477, 2.7174, 1.7974
YIQ	46.3780, 16.5510, 2.9110

Conversions

Conversions Part 2

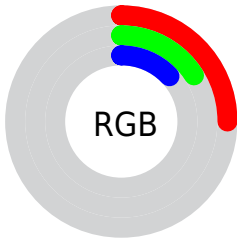
Format	Color
RYB	64, 42, 33
Decimal	4204577
CIELab	18.87, 10.24, 9.20
CIElCh	19, 13.772, 41.936
Yxy	2.7174, 0.4108, 0.3546
Android (android.graphics.Color)	4282394657 (0xFF402821)
YUV	46.3780, -6.5954, 15.4545
Hunter-Lab	16.4845, 5.2362, 5.0742

Details

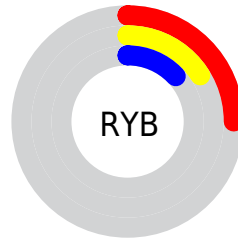
The YUV color **46.3780, -6.5954, 15.4545** is a dark color, and the websafe version is hex **333333**. A complement of this color would be **50.6220, 6.5954, -15.4545**, and the grayscale version is **46.0000, 0.0000, 0.0000**.

A 20% lighter version of the original color is **92.4600, -7.6218, 18.0136**, and **4.1860, -2.0637, 8.6069** is the 20% darker color. If you saturate the color by 10%, you get **42.7590, -7.7692, 18.6284**, and if you desaturate by 10%, it is **49.9970, -5.4215, 12.2806**.

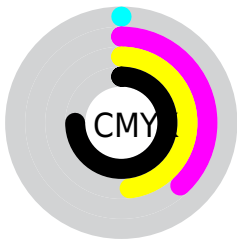
Distribution



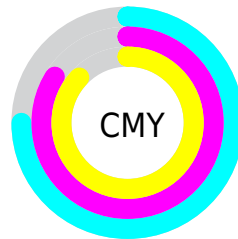
- Red (25%)
- Green (16%)
- Blue (13%)



- Red (25%)
- Yellow (16%)
- Blue (13%)



- Cyan (0%)
- Magenta (38%)
- Yellow (48%)
- Black (75%)



- Cyan (75%)
- Magenta (84%)
- Yellow (87%)

Brightness & Saturation Gradients

These gradients show how the YUV color 46.3780, -6.5954, 15.4545 changes by changing the brightness by 10 percent. The first figure shows a shift by +10% for each color and the second figure -10%.

Similar to the brightness gradients but the following saturation gradients show a change of the YUV color 46.3780, -6.5954, 15.4545 by changing the saturation by 10% instead.

■ 46.3780, -6.5954,
15.4545

■ 46.3780, -6.5954,
15.4545

255.0000, 0.0000,
0.0000

■ 24.5520, -7.1741,
14.4249

■ 92.4600, -7.6218,
18.0136

■ 4.1860, -2.0637,
8.6069

■ 117.6450, -8.2060,
18.7283

■ 0.0000, 0.0000,
0.0000

■ 143.2430, -8.5008,
19.9579

■ 169.5420, -8.6482,
20.5727

■ 196.8410, -8.7956,
21.1874

■ 225.0260, -9.3798,

21.9022

■ 246.1490, -5.9895,
7.7623

■ 46.3780, -6.5954,
15.4545

■ 46.3780, -6.5954,
15.4545

■ 42.7590, -7.7692,
18.6284

■ 49.9970, -5.4215,
12.2806

■ 39.0260, -9.3798,
21.9022

■ 53.7300, -3.8109,
9.0068

■ 35.4070, -10.5537,
25.0761

■ 57.3490, -2.6371,
5.8329

■ 31.6740, -12.1643,
28.3499

■ 61.0820, -1.0264,
2.5591

■ 28.0550, -13.3381,
31.5238

■ 64.7010, 0.1474,
-0.6148

■ 27.3540, -13.4855,
32.1385

■ 68.3200, 1.3212,
-3.7886

■ 72.0530, 2.9319,
-7.0625

■ 75.6720, 4.1057,
-10.2363

■ 79.4050, 5.7163,
-13.5102

Harmonies

Analogous

The Analogous color harmony consists of three colors that are next to each other on the color wheel.



46.8280, -2.3802, 16.8138



46.3780, -6.5954, 15.4545



45.6610, -9.1999, 10.8213

Triad

The Triadic color harmony groups three colors that are evenly spaced from another and form a triangle on the color wheel.



46.3780, -6.5954, 15.4545



42.1570, -1.5564, -14.1697



45.1870, 9.7678, -6.3030

Complementary

The Complementary color scheme is a pair of colors which are on the opposite of each other on the color wheel.



46.3780, -6.5954, 15.4545



50.6220, 6.5954, -15.4545

Split Complementary

Split-complementary colors differ from the complementary color scheme. The scheme consists of three colors, the original color and two neighbors of the complement color.



43.0500, 10.8214, -17.5838



46.3780, -6.5954, 15.4545



39.8230, 5.0173, -22.6468

Square

The Square scheme is like the rectangle color scheme, but the four colors are evenly spaced on the color wheel.



46.3780, -6.5954, 15.4545



43.6590, -6.2409, -4.9629



39.9520, 9.3907, -25.3909



47.1560, 6.8251, 4.2482

Rectangle

The Rectangle color scheme consists of four colors that form a rectangle on the color wheel.



46.3780, -6.5954, 15.4545



44.9270, -9.3310, 6.2030



39.9520, 9.3907, -25.3909



44.9800, 10.3629, -10.5065

Sweetspot

The Sweet Spot groups the original color and five complimentary colors.



46.3780, -6.5954, 15.4545



76.7620, -2.3477, 6.3477



45.0050, 5.9135, 16.6586



38.6800, -1.3212, 3.7886



171.0000, 0.0000, 0.0000



43.0000, 0.0000, 0.0000

Same Dimension

The Same Dimension uses a secret algorithm to generate beautiful new colors.



46.3780, -6.5954, 15.4545



56.1080, -10.4062, 24.4613



55.1830, -10.9362, 7.7325



31.4840, -0.7316, 1.3295



41.9170, -20.6651, 48.3078



96.9130, -47.7781, 111.4553

Inverse Universe

The Inverse Universe completely reimagines the original color for something new.



50.6220, 6.5954, -15.4545



62.8920, 10.4062, -24.4613



41.8170, 10.9362, -7.7325



31.5160, 0.7316, -1.3295



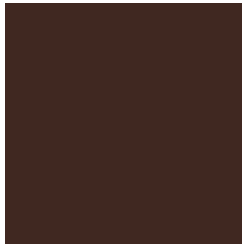
55.0830, 20.6651, -48.3078



127.6740, 47.4887, -111.9701

Previews

White Background



This preview shows how the YUV color 46.3780, -6.5954, 15.4545 looks on a white background.

Color Contrast Check

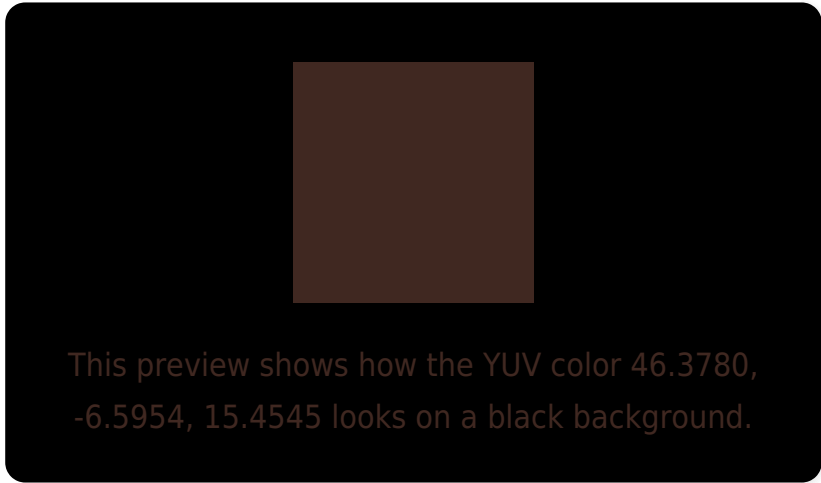
Large Text (above 18pt) WCAG AA ✓ Pass

Any Text WCAG AA ✓ Pass

Large Text (above 18pt) WCAG AAA ✓ Pass

Any Text WCAG AAA ✓ Pass

Black Background



Color Contrast Check

Large Text (above 18pt) WCAG AA × Fail

Any Text WCAG AA × Fail

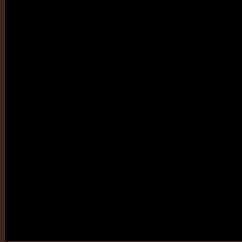
Large Text (above 18pt) WCAG AAA × Fail

Any Text WCAG AAA × Fail

If you want to check with other color combinations, try the [Color Contrast Checker](#).

YUV 46.3780, -6.5954, 15.4545

Background



This preview shows how black text looks on a background with the YUV color 46.3780, -6.5954, 15.4545.



This preview shows how white text looks on a background with the YUV color 46.3780, -6.5954,

Color Blindness Simulation

Color vision deficiency is a very complex topic, and I could not describe the different causes any better than Wikipedia does, so if you want to learn more, you should check out their [article about color blindness](#).

Dichromacy



Original Color

46.3780, -6.5954, 15.4545

Protanopia

45.7570, -4.8102, 2.8441

Deuteranopia

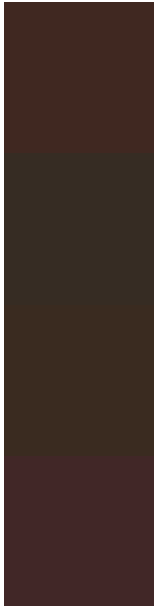
45.9210, -6.8631, 7.9623



Tritanopia

47.1160, -2.5222, 15.6843

Trichromacy



Original Color

46.3780, -6.5954, 15.4545

Protanomaly

45.9640, -5.4053, 7.0476

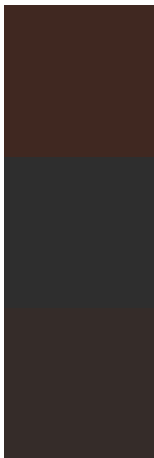
Deuteranomaly

46.2310, -7.0159, 10.3214

Tritanomaly

46.7740, -3.8326, 15.9842

Monochromacy



Original Color

46.3780, -6.5954, 15.4545

Achromatopsia

46.0000, 0.0000, 0.0000

Achromatomaly

46.3490, -2.6371, 5.8329

CSS Examples

Text

The CSS property to change the color of the text to YUV 46.3780, -6.5954, 15.4545 is called "color". The color property can be set on classes, ids or directly on the HTML element.

This example shows how text in the color `rgb(64, 40, 33)` looks like.

```
.text, #text, p{  
    color:rgb(64, 40, 33)  
}
```

If you want to add a text shadow in that color use the text-shadow property, you can generate a text shadow directly with our [CSS Text Shadow Generator](#).

Here you see how black text with a 4 pixel rgb(64, 40, 33) colored shadow looks like.

```
.shadow{ text-shadow: 4px 4px 2px rgb(64, 40, 33) }
```

Border

The CSS property to change the border of an element to YUV 46.3780, -6.5954, 15.4545 is called "border". The border property can be set on classes, ids or directly on the HTML element.

This example shows the color as border, it can be applied via the CSS property "border" or "border-color".

```
.border, #border, table{ border:4px solid rgb(64, 40, 33) }
```


If only the border color should be changed use the property border-color.

```
.border{ border-color:rgb(64, 40, 33) }
```

If you want to add a box shadow in that color use:

Here you see how a box with a 4 pixel rgb(64, 40, 33) colored shadow looks like.

```
.boxshadow{ -moz-box-shadow:4px 4px 4px  
4px rgb(64, 40, 33); -webkit-box-  
shadow:4px 4px 4px 4px rgb(64, 40, 33);  
box-shadow:4px 4px 4px 4px rgb(64, 40, 33)  
}
```

Background

The CSS property to change the background color of an element to YUV 46.3780, -6.5954, 15.4545 is called "background". The background property can be set on classes, ids or directly on the HTML element.

```
.background, #background, body{  
background: rgb(64, 40, 33) }
```

If only the background color should be changed can be used:

```
.background{ background-color: rgb(64, 40,  
33) }
```

This example shows the color as background, it is applied via the CSS property "background".

To optimize and compress your CSS code, you can use our [online CSS compressor and optimizer](#) based on csstidy. If you want to create a linear or radial gradient as background or border, check our [CSS Gradient Generator](#).

Hey! You found this booklet
interesting? Support Converting
Colors with the new Membership
Option!

The pro membership hides all ads, plus gives you
double the colors in the color bucket, and more
awesome pro features!

[Learn more, Memberships starting at \\$2.50/m!](#)

**Follow me
on Twitter!**

@ConvertingColor