

# Converting Colors

YUV(46.4700, -2.6967, 25.0208)

Have a look what the booklet for  
YUV(46.4700, -2.6967, 25.0208)  
contains.

|  |    |
|--|----|
| <b>YUV(46.4700, -2.6967, 25.0208)</b> .....    | 3  |
| <b><i>Conversions</i></b> .....                | 4  |
| <b><i>Details</i></b> .....                    | 6  |
| <b><i>Harmonies</i></b> .....                  | 12 |
| <b><i>Previews</i></b> .....                   | 24 |
| <b><i>Color Blindness Simulation</i></b> ..... | 28 |
| <b><i>CSS Examples</i></b> .....               | 31 |

# Color

**YUV(46.4700, -2.6967,  
25.0208)**

# Conversions

## Conversions Part 1

| <b>Format</b> | <b>Color</b>              |
|---------------|---------------------------|
| Hex           | 4B2129                    |
| RGB           | 75, 33, 41                |
| RGB Percent   | 29%, 13%, 16%             |
| CMY           | 0.7059, 0.8706, 0.8392    |
| CMYK          | 0.00, 0.56, 0.45, 0.71    |
| HSL           | 349°, 39%, 21%            |
| HSV           | 349°, 56%, 29%            |
| XYZ           | 3.8457, 2.7437, 2.4247    |
| YIQ           | 46.4700, 22.4640, 11.3920 |

# Conversions

## Conversions Part 2

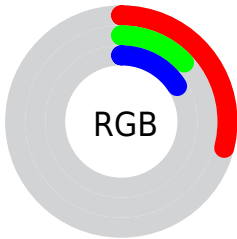
| <b>Format</b>                       | <b>Color</b>                 |
|-------------------------------------|------------------------------|
| <b>RYB</b>                          | 75, 33, 41                   |
| Decimal                             | 4923689                      |
| CIELab                              | 18.99, 20.85, 4.05           |
| CIElCh                              | 19, 21.239, 11.003           |
| Yxy                                 | 2.7437, 0.4266,<br>0.3044    |
| Android<br>(android.graphics.Color) | 4283113769<br>(0xFF4B2129)   |
| YUV                                 | 46.4700, -2.6967,<br>25.0208 |
| Hunter-Lab                          | 16.5640, 12.4562,<br>2.9157  |

# Details

The YUV color **46.4700, -2.6967, 25.0208** is a dark color, and the websafe version is hex **663333**. A complement of this color would be **61.5300, 2.6967, -25.0208**, and the grayscale version is **46.0000, 0.0000, 0.0000**.

A 20% lighter version of the original color is **93.8510, -3.8705, 28.1947**, and **9.0840, -3.9854, 18.3433** is the 20% darker color. If you saturate the color by 10%, you get **41.0900, -3.0024, 29.7391**, and if you desaturate by 10%, it is **51.8500, -2.3911, 20.3025**.

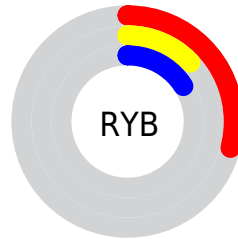
# Distribution



Red (29%)

Green (13%)

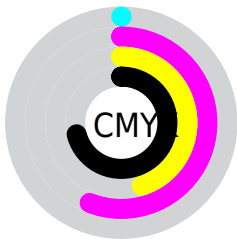
Blue (16%)



Red (29%)

Yellow (13%)

Blue (16%)

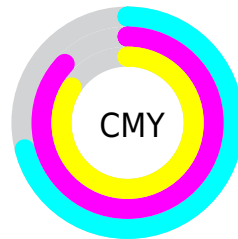


Cyan (0%)

Magenta (56%)

Yellow (45%)

Black (71%)



Cyan (71%)

Magenta (87%)

Yellow (84%)

# Brightness & Saturation Gradients

These gradients show how the YUV color 46.4700, -2.6967, 25.0208 changes by changing the brightness by 10 percent. The first figure shows a shift by +10% for each color and the second figure -10%.

Similar to the brightness gradients but the following saturation gradients show a change of the YUV color 46.4700, -2.6967, 25.0208 by changing the saturation by 10% instead.



■ 46.4700, -2.6967,  
25.0208

■ 46.4700, -2.6967,  
25.0208

■ 255.0000, 0.0000,  
0.0000

■ 24.1000, -1.5283,  
23.5913

■ 93.8510, -3.8705,  
28.1947

■ 9.0840, -3.9854,  
18.3433

■ 118.4490, -4.1654,  
29.4242

■ 0.0000, 0.0000,  
0.0000

■ 145.0470, -4.4602,  
30.6538

■ 171.6450, -4.7550,  
31.8833

■ 198.9440, -4.9024,  
32.4981

■ 223.6660, -3.2863,

27.4799

243.8810, 0.5517,  
9.7514

46.4700, -2.6967,  
25.0208

46.4700, -2.6967,  
25.0208

41.0900, -3.0024,  
29.7391

51.8500, -2.3911,  
20.3025

36.2970, -3.5974,  
33.9425

56.6430, -1.7960,  
16.0991

31.5040, -4.1925,  
38.1460

62.0230, -1.4903,  
11.3808

26.1240, -4.4981,  
42.8643

66.8160, -0.8953,  
7.1774

24.0210, -4.9404,  
44.7086

72.1960, -0.5896,  
2.4591

■ 76.9890, 0.0054,  
-1.7444

■ 82.4830, 0.7479,  
-6.5626

■ 87.2760, 1.3429,  
-10.7661

■ 92.6560, 1.6486,  
-15.4843

# Harmonies

## Analogous

The Analogous color harmony consists of three colors that are next to each other on the color wheel.



47.6740, 4.5977, 18.7029



46.4700, -2.6967, 25.0208



45.7380, -9.2378, 23.0318

# Triad

The Triadic color harmony groups three colors that are evenly spaced from another and form a triangle on the color wheel.



46.4700, -2.6967, 25.0208



42.3120, -10.0138, -8.1666



37.9000, 18.2903, -33.2383

# Complementary

The Complementary color scheme is a pair of colors which are on the opposite of each other on the color wheel.



46.4700, -2.6967, 25.0208



61.5300, 2.6967, -25.0208

# Split Complementary

Split-complementary colors differ from the complementary color scheme. The scheme consists of three colors, the original color and two neighbors of the complement color.



38.6350, 13.4909, -33.8829



46.4700, -2.6967, 25.0208



37.6070, -0.7923, -25.9653

# Square

The Square scheme is like the rectangle color scheme, but the four colors are evenly spaced on the color wheel.



46.4700, -2.6967, 25.0208



44.1350, -14.8566, 5.1436



37.5120, 6.6496, -32.8980



44.6360, 15.4625, -12.8358



# Rectangle

The Rectangle color scheme consists of four colors that form a rectangle on the color wheel.



46.4700, -2.6967, 25.0208



45.6790, -13.1527, 18.6985



37.5120, 6.6496, -32.8980



38.8460, 16.8379, -34.0679

# Sweetspot

The Sweet Spot groups the original color and five complimentary colors.



46.4700, -2.6967, 25.0208



85.5390, -0.7587, 10.0513



47.9540, 13.3337, 16.7033



41.9190, -0.4531, 5.3330



176.0000, 0.0000, 0.0000



48.0000, 0.0000, 0.0000



# Same Dimension

The Same Dimension uses a secret algorithm to generate beautiful new colors.



46.4700, -2.6967, 25.0208



52.8030, -4.3399, 38.7608



53.1890, -9.9532, 19.1282



35.3100, -0.1528, 2.3591



32.6640, -6.7364, 60.8077



73.7860, -14.6845, 136.9997



# Inverse Universe

The Inverse Universe completely reimagines the original color for something new.



46.4700, -2.6967, 25.0208



52.8030, -4.3399, 38.7608



54.8110, 9.9532, -19.1282



35.3100, -0.1528, 2.3591



32.6640, -6.7364, 60.8077

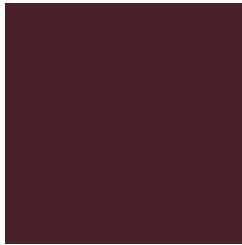


73.7860, -14.6845, 136.9997



# Previews

## White Background



This preview shows how the YUV color 46.4700, -2.6967, 25.0208 looks on a white background.

## Color Contrast Check

Large Text (above 18pt) WCAG AA ✓ Pass

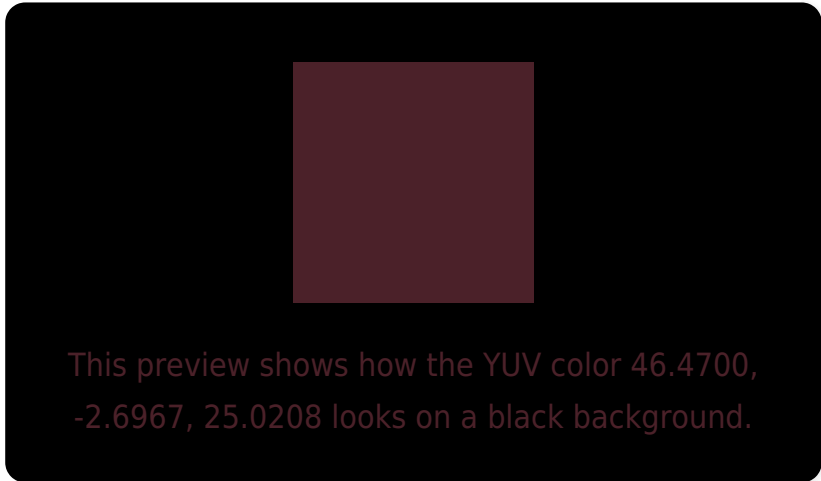
Any Text WCAG AA ✓ Pass

Large Text (above 18pt) WCAG AAA ✓ Pass

Any Text WCAG AAA ✓ Pass



# Black Background



## Color Contrast Check

Large Text (above 18pt) WCAG AA × Fail

Any Text WCAG AA × Fail

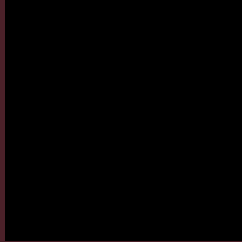
Large Text (above 18pt) WCAG AAA × Fail

Any Text WCAG AAA × Fail

If you want to check with other color combinations, try the [Color Contrast Checker](#).

**YUV 46.4700, -2.6967, 25.0208**

## **Background**



This preview shows how black text looks on a background with the YUV color 46.4700, -2.6967, 25.0208.



This preview shows how white text looks on a background with the YUV color 46.4700, -2.6967,



# Color Blindness Simulation

Color vision deficiency is a very complex topic, and I could not describe the different causes any better than Wikipedia does, so if you want to learn more, you should check out their [article about color blindness](#).

## Dichromacy



### Original Color

46.4700, -2.6967, 25.0208

### Protanopia

47.1140, 0.4368, -0.1000

### Deuteranopia

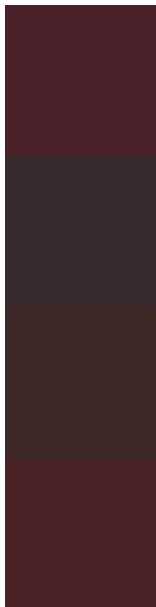
47.0070, -3.9475, 6.1329



## Tritanopia

46.4870, -5.1701, 25.0059

# Trichromacy



## Original Color

46.4700, -2.6967, 25.0208

## Protanomaly

46.8270, -0.9007, 8.9217

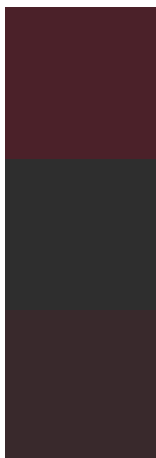
## Deuteranomaly

47.1650, -3.5323, 13.0103

## Tritanomaly

46.7150, -4.2965, 24.8059

# Monochromacy



## Original Color

46.4700, -2.6967, 25.0208

## Achromatopsia

46.0000, 0.0000, 0.0000

## Achromatomaly

46.1260, -1.0481, 9.5365

# CSS Examples

## Text

The CSS property to change the color of the text to YUV 46.4700, -2.6967, 25.0208 is called "color". The color property can be set on classes, ids or directly on the HTML element.

This example shows how text in the color `rgb(75, 33, 41)` looks like.

```
.text, #text, p{  
    color:rgb(75, 33, 41)  
}
```

If you want to add a text shadow in that color use the text-shadow property, you can generate a text shadow directly with our [CSS Text Shadow Generator](#).

Here you see how black text with a 4 pixel rgb(75, 33, 41) colored shadow looks like.

```
.shadow{ text-shadow: 4px 4px 2px rgb(75, 33, 41) }
```

## Border

The CSS property to change the border of an element to YUV 46.4700, -2.6967, 25.0208 is called "border". The border property can be set on classes, ids or directly on the HTML element.

This example shows the color as border, it can be applied via the CSS property "border" or "border-color".

```
.border, #border, table{ border:4px solid rgb(75, 33, 41) }
```



If only the border color should be changed use the property border-color.

```
.border{ border-color:rgb(75, 33, 41) }
```

If you want to add a box shadow in that color use:

Here you see how a box with a 4 pixel rgb(75, 33, 41) colored shadow looks like.

```
.boxshadow{ -moz-box-shadow:4px 4px 4px  
4px rgb(75, 33, 41); -webkit-box-  
shadow:4px 4px 4px 4px rgb(75, 33, 41);  
box-shadow:4px 4px 4px 4px rgb(75, 33, 41)  
}
```

# Background

The CSS property to change the background color of an element to YUV 46.4700, -2.6967, 25.0208 is called "background". The background property can be set on classes, ids or directly on the HTML element.

```
.background, #background, body{  
background: rgb(75, 33, 41) }
```

If only the background color should be changed can be used:

```
.background{ background-color: rgb(75, 33,  
41) }
```

This example shows the color as background, it is applied via the CSS property "background".

To optimize and compress your CSS code, you can use our [online CSS compressor and optimizer](#) based on csstidy. If you want to create a linear or radial gradient as background or border, check our [CSS Gradient Generator](#).

Hey! You found this booklet  
interesting? Support Converting  
Colors with the new Membership  
Option!

The pro membership hides all ads, plus gives you  
double the colors in the color bucket, and more  
awesome pro features!

**[Learn more, Memberships starting at \\$2.50/m!](#)**

**Follow me  
on Twitter!**

@ConvertingColor