

Converting Colors

YUV(47.9590, -4.4168, 16.6990)

Have a look what the booklet for
YUV(47.9590, -4.4168, 16.6990)
contains.

YUV(47.9590, -4.4168, 16.6990)	3
<i>Conversions</i>	4
<i>Details</i>	6
<i>Harmonies</i>	12
<i>Previews</i>	24
<i>Color Blindness Simulation</i>	28
<i>CSS Examples</i>	31

Color

**YUV(47.9590, -4.4168,
16.6990)**

Conversions

Conversions Part 1

Format	Color
Hex	432827
RGB	67, 40, 39
RGB Percent	26%, 16%, 15%
CMY	0.7373, 0.8431, 0.8471
CMYK	0.00, 0.40, 0.42, 0.74
HSL	2°, 26%, 21%
HSV	2°, 42%, 26%
XYZ	3.4397, 2.8574, 2.2897
YIQ	47.9590, 16.4130, 5.4130

Conversions

Conversions Part 2

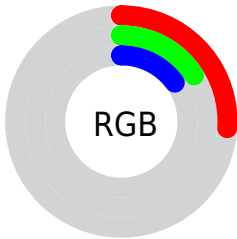
Format	Color
R_{YB}	67, 40, 39
Decimal	4401191
CIE _{Lab}	19.46, 12.53, 5.94
CIE _{LCh}	19, 13.864, 25.369
Yxy	2.8574, 0.4006, 0.3328
Android (android.graphics.Color)	4282591271 (0xFF432827)
YUV	47.9590, -4.4168, 16.6990
Hunter-Lab	16.9037, 6.7415, 3.8015

Details

The YUV color **47.9590, -4.4168, 16.6990** is a dark color, and the websafe version is hex **333333**. A complement of this color would be **58.0410, 4.4168, -16.6990**, and the grayscale version is **48.0000, 0.0000, 0.0000**.

A 20% lighter version of the original color is **94.1550, -5.0064, 19.1581**, and **6.5780, -3.2430, 13.5251** is the 20% darker color. If you saturate the color by 10%, you get **43.6390, -5.7380, 20.4876**, and if you desaturate by 10%, it is **52.2790, -3.0955, 12.9103**.

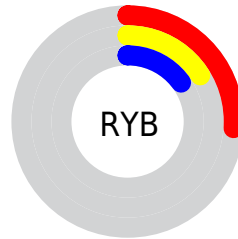
Distribution



Red (26%)

Green (16%)

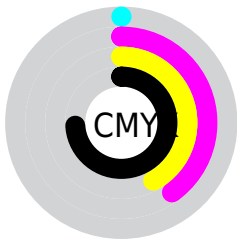
Blue (15%)



Red (26%)

Yellow (16%)

Blue (15%)

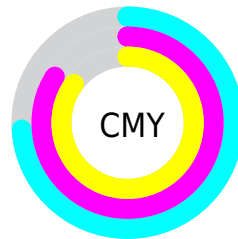


Cyan (0%)

Magenta (40%)

Yellow (42%)

Black (74%)



Cyan (74%)

Magenta (84%)

Yellow (85%)

Brightness & Saturation Gradients

These gradients show how the YUV color 47.9590, -4.4168, 16.6990 changes by changing the brightness by 10 percent. The first figure shows a shift by +10% for each color and the second figure -10%.

Similar to the brightness gradients but the following saturation gradients show a change of the YUV color 47.9590, -4.4168, 16.6990 by changing the saturation by 10% instead.

■ 47.9590, -4.4168,
16.6990

■ 47.9590, -4.4168,
16.6990

■ 255.0000, 0.0000,
0.0000

■ 26.4750, -3.6852,
15.3694

■ 94.1550, -5.0064,
19.1581

■ 6.5780, -3.2430,
13.5251

■ 119.3400, -5.5906,
19.8728

■ 0.0000, 0.0000,
0.0000

■ 144.9380, -5.8854,
21.1024

■ 171.8240, -6.3222,
21.2024

■ 199.4220, -6.6170,
22.4319

■ 227.1340, -6.4751,

23.5615

247.6480, -2.7845,
6.4477

47.9590, -4.4168,
16.6990

47.9590, -4.4168,
16.6990

43.6390, -5.7380,
20.4876

52.2790, -3.0955,
12.9103

38.8460, -6.3331,
24.6911

57.0720, -2.5005,
8.7069

34.5260, -7.6543,
28.4797

61.3920, -1.1793,
4.9182

29.6190, -8.6862,
32.7831

66.2990, -0.1474,
0.6148

25.4130, -9.5706,
36.4718

70.6190, 1.1738,
-3.1739

■ 21.2070, -10.4551,
40.1605

■ 75.4120, 1.7689,
-7.3773

■ 79.7320, 3.0901,
-11.1660

■ 84.6390, 4.1220,
-15.4694

■ 88.8450, 5.0064,
-19.1581

Harmonies

Analogous

The Analogous color harmony consists of three colors that are next to each other on the color wheel.



48.8000, 0.0986, 15.0844



47.9590, -4.4168, 16.6990



47.6120, -8.1897, 13.4953

Triad

The Triadic color harmony groups three colors that are evenly spaced from another and form a triangle on the color wheel.



47.9590, -4.4168, 16.6990



43.7940, -4.3354, -9.4663



45.6700, 10.5157, -12.8656

Complementary

The Complementary color scheme is a pair of colors which are on the opposite of each other on the color wheel.



47.9590, -4.4168, 16.6990



58.0410, 4.4168, -16.6990

Split Complementary

Split-complementary colors differ from the complementary color scheme. The scheme consists of three colors, the original color and two neighbors of the complement color.



41.9030, 10.4008, -22.7169



47.9590, -4.4168, 16.6990



42.5200, 1.2226, -18.8730

Square

The Square scheme is like the rectangle color scheme, but the four colors are evenly spaced on the color wheel.



47.9590, -4.4168, 16.6990



45.5240, -8.1463, -0.4595



40.3820, 7.2067, -24.8910



47.5790, 8.5886, -1.3848

Rectangle

The Rectangle color scheme consists of four colors that form a rectangle on the color wheel.



47.9590, -4.4168, 16.6990



46.9490, -9.3419, 9.6917



40.3820, 7.2067, -24.8910



44.6480, 10.5265, -16.3543

Sweetspot

The Sweet Spot groups the original color and five complimentary colors.



47.9590, -4.4168, 16.6990



79.1750, -2.0583, 6.8625



50.4500, 7.6662, 14.5144



38.6800, -1.3212, 3.7886



171.0000, 0.0000, 0.0000



43.0000, 0.0000, 0.0000

Same Dimension

The Same Dimension uses a secret algorithm to generate beautiful new colors.



47.9590, -4.4168, 16.6990



57.3300, -7.0647, 26.0206



56.1770, -8.4683, 9.4918



30.8970, -0.4422, 1.8443



30.7640, -15.1667, 58.0890



71.6720, -35.3343, 133.5917

Inverse Universe

The Inverse Universe completely reimagines the original color for something new.



58.0410, 4.4168, -16.6990



72.6700, 7.0647, -26.0206



49.8230, 8.4683, -9.4918



32.1030, 0.4422, -1.8443



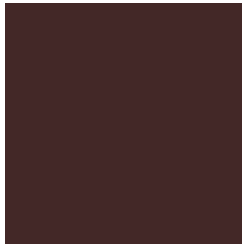
65.6490, 15.4560, -57.5742



152.3280, 35.3343, -133.5917

Previews

White Background



This preview shows how the YUV color 47.9590, -4.4168, 16.6990 looks on a white background.

Color Contrast Check

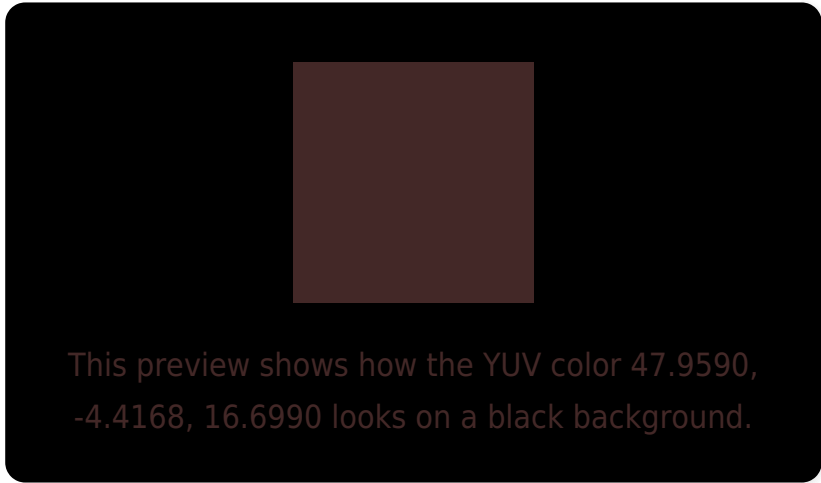
Large Text (above 18pt) WCAG AA ✓ Pass

Any Text WCAG AA ✓ Pass

Large Text (above 18pt) WCAG AAA ✓ Pass

Any Text WCAG AAA ✓ Pass

Black Background



Color Contrast Check

Large Text (above 18pt) WCAG AA × Fail

Any Text WCAG AA × Fail

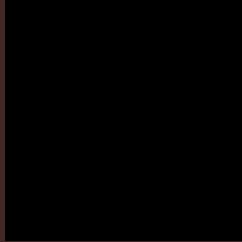
Large Text (above 18pt) WCAG AAA × Fail

Any Text WCAG AAA × Fail

If you want to check with other color combinations, try the [Color Contrast Checker](#).

YUV 47.9590, -4.4168, 16.6990

Background



This preview shows how black text looks on a background with the YUV color 47.9590, -4.4168, 16.6990.

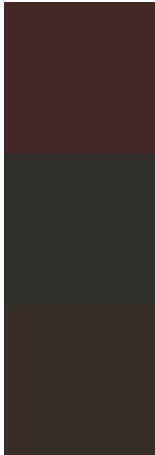


This preview shows how white text looks on a background with the YUV color 47.9590, -4.4168,

Color Blindness Simulation

Color vision deficiency is a very complex topic, and I could not describe the different causes any better than Wikipedia does, so if you want to learn more, you should check out their [article about color blindness](#).

Dichromacy



Original Color

47.9590, -4.4168, 16.6990

Protanopia

47.4410, -2.1894, 2.2442

Deuteranopia

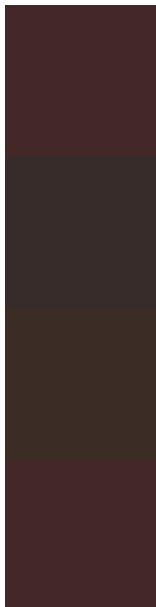
47.7790, -4.8210, 6.3328



Tritanopia

47.7140, -2.8170, 16.9138

Trichromacy



Original Color

47.9590, -4.4168, 16.6990

Protanomaly

47.3600, -2.6425, 7.5773

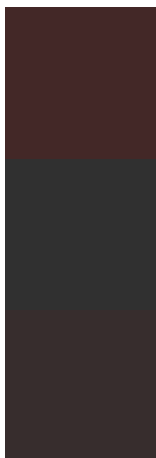
Deuteranomaly

47.8010, -4.8319, 9.8215

Tritanomaly

47.6000, -3.2538, 17.0138

Monochromacy



Original Color

47.9590, -4.4168, 16.6990

Achromatopsia

48.0000, 0.0000, 0.0000

Achromatomaly

47.9900, -1.4741, 6.1478

CSS Examples

Text

The CSS property to change the color of the text to YUV 47.9590, -4.4168, 16.6990 is called "color". The color property can be set on classes, ids or directly on the HTML element.

This example shows how text in the color `rgb(67, 40, 39)` looks like.

```
.text, #text, p{  
    color:rgb(67, 40, 39)  
}
```

If you want to add a text shadow in that color use the text-shadow property, you can generate a text shadow directly with our [CSS Text Shadow Generator](#).

Here you see how black text with a 4 pixel rgb(67, 40, 39) colored shadow looks like.

```
.shadow{ text-shadow: 4px 4px 2px rgb(67, 40, 39) }
```

Border

The CSS property to change the border of an element to YUV 47.9590, -4.4168, 16.6990 is called "border". The border property can be set on classes, ids or directly on the HTML element.

This example shows the color as border, it can be applied via the CSS property "border" or "border-color".

```
.border, #border, table{ border:4px solid rgb(67, 40, 39) }
```


If only the border color should be changed use the property border-color.

```
.border{ border-color:rgb(67, 40, 39) }
```

If you want to add a box shadow in that color use:

Here you see how a box with a 4 pixel rgb(67, 40, 39) colored shadow looks like.

```
.boxshadow{ -moz-box-shadow:4px 4px 4px  
4px rgb(67, 40, 39); -webkit-box-  
shadow:4px 4px 4px 4px rgb(67, 40, 39);  
box-shadow:4px 4px 4px 4px rgb(67, 40, 39)  
}
```

Background

The CSS property to change the background color of an element to YUV 47.9590, -4.4168, 16.6990 is called "background". The background property can be set on classes, ids or directly on the HTML element.

```
.background, #background, body{  
background: rgb(67, 40, 39) }
```

If only the background color should be changed can be used:

```
.background{ background-color: rgb(67, 40,  
39) }
```

This example shows the color as background, it is applied via the CSS property "background".

To optimize and compress your CSS code, you can use our [online CSS compressor and optimizer](#) based on csstidy. If you want to create a linear or radial gradient as background or border, check our [CSS Gradient Generator](#).

Hey! You found this booklet interesting? Support Converting Colors with the new Membership Option!

The pro membership hides all ads, plus gives you double the colors in the color bucket, and more awesome pro features!

[Learn more, Memberships starting at \\$2.50/m!](#)

**Follow me
on Twitter!**

@ConvertingColor