

Converting Colors

YUV(48.9340, -9.8275, 25.4909)

Have a look what the booklet for
YUV(48.9340, -9.8275, 25.4909)
contains.

YUV(48.9340, -9.8275, 25.4909)	3
<i>Conversions</i>	4
<i>Details</i>	6
<i>Harmonies</i>	12
<i>Previews</i>	24
<i>Color Blindness Simulation</i>	28
<i>CSS Examples</i>	31

Color

**YUV(48.9340, -9.8275,
25.4909)**

Conversions

Conversions Part 1

Format	Color
Hex	4E261D
RGB	78, 38, 29
RGB Percent	31%, 15%, 11%
CMY	0.6941, 0.8510, 0.8863
CMYK	0.00, 0.51, 0.63, 0.69
HSL	11°, 46%, 21%
HSV	11°, 63%, 31%
XYZ	4.0568, 3.0946, 1.5459
YIQ	48.9340, 26.7290, 5.6810

Conversions

Conversions Part 2

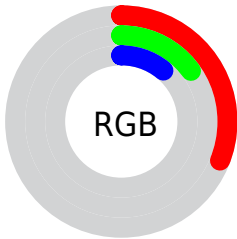
Format	Color
RYB	78, 40, 29
Decimal	5121565
CIELab	20.42, 17.76, 14.36
CIElCh	20, 22.839, 38.965
Yxy	3.0946, 0.4664, 0.3558
Android (android.graphics.Color)	4283311645 (0xFF4E261D)
YUV	48.9340, -9.8275, 25.4909
Hunter-Lab	17.5916, 10.3784, 7.1038

Details

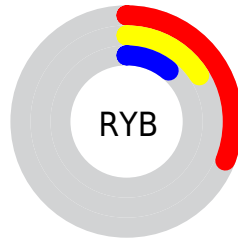
The YUV color **48.9340, -9.8275, 25.4909** is a dark color, and the websafe version is hex **663333**. A complement of this color would be **58.0660, 9.8275, -25.4909**, and the grayscale version is **49.0000, 0.0000, 0.0000**.

A 20% lighter version of the original color is **96.5000, -11.5855, 29.3795**, and **9.6820, -4.2802, 19.5729** is the 20% darker color. If you saturate the color by 10%, you get **44.5000, -11.5855, 29.3795**, and if you desaturate by 10%, it is **53.3680, -8.0694, 21.6023**.

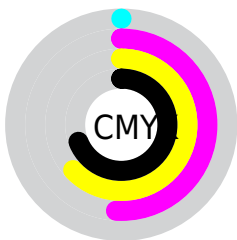
Distribution



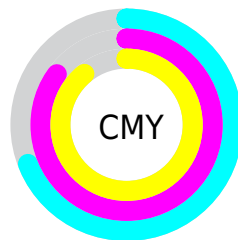
- Red (31%)
- Green (15%)
- Blue (11%)



- Red (31%)
- Yellow (16%)
- Blue (11%)



- Cyan (0%)
- Magenta (51%)
- Yellow (63%)
- Black (69%)



- Cyan (69%)
- Magenta (85%)
- Yellow (89%)

Brightness & Saturation Gradients

These gradients show how the YUV color 48.9340, -9.8275, 25.4909 changes by changing the brightness by 10 percent. The first figure shows a shift by +10% for each color and the second figure -10%.

Similar to the brightness gradients but the following saturation gradients show a change of the YUV color 48.9340, -9.8275, 25.4909 by changing the saturation by 10% instead.

■ 48.9340, -9.8275,
25.4909

■ 48.9340, -9.8275,
25.4909

255.0000, 0.0000,
0.0000

■ 26.5810, -11.1324,
24.0465

■ 96.5000, -11.5855,
29.3795

■ 9.6820, -4.2802,
19.5729

■ 121.2830,
-12.4645, 31.3238

■ 0.0000, 0.0000,
0.0000

■ 147.4680,
-13.0487, 32.0386

■ 174.3650,
-13.4909, 33.8829

■ 201.9630,
-13.7858, 35.1124

■ 225.3640,

-12.0115, 25.9908

244.9920, -7.8841,
8.7770

48.9340, -9.8275,
25.4909

48.9340, -9.8275,
25.4909

44.5000, -11.5855,
29.3795

53.3680, -8.0694,
21.6023

39.4790, -13.0541,
33.7829

58.3890, -6.6008,
17.1988

35.1590, -14.3754,
37.5716

62.7090, -5.2795,
13.4102

31.5400, -15.5492,
40.7454

67.1430, -3.5215,
9.5216

72.1640, -2.0529,
5.1182

■ 76.5980, -0.2948,
1.2296

■ 81.6190, 1.1738,
-3.1739

■ 85.9390, 2.4951,
-6.9625

■ 90.3730, 4.2531,
-10.8511

Harmonies

Analogous

The Analogous color harmony consists of three colors that are next to each other on the color wheel.



49.5950, -2.2653, 26.6652



48.9340, -9.8275, 25.4909



48.2120, -14.8945, 17.3541

Triad

The Triadic color harmony groups three colors that are evenly spaced from another and form a triangle on the color wheel.



48.9340, -9.8275, 25.4909



40.6670, -1.8078, -26.8950



46.7820, 17.3625, -15.5948

Complementary

The Complementary color scheme is a pair of colors which are on the opposite of each other on the color wheel.



48.9340, -9.8275, 25.4909



58.0660, 9.8275, -25.4909

Split Complementary

Split-complementary colors differ from the complementary color scheme. The scheme consists of three colors, the original color and two neighbors of the complement color.



40.8180, 19.3167, -35.7974



48.9340, -9.8275, 25.4909



40.2020, 6.8024, -35.2572

Square

The Square scheme is like the rectangle color scheme, but the four colors are evenly spaced on the color wheel.



48.9340, -9.8275, 25.4909



44.9700, -11.3242, -7.8667



41.4390, 14.0806, -36.3420



50.8340, 11.9138, 5.4076

Rectangle

The Rectangle color scheme consists of four colors that form a rectangle on the color wheel.



48.9340, -9.8275, 25.4909



47.4130, -16.4726, 10.1618



41.4390, 14.0806, -36.3420



43.5850, 19.4316, -25.9460

Sweetspot

The Sweet Spot groups the original color and five complimentary colors.



48.9340, -9.8275, 25.4909



90.4420, -3.6689, 10.1364



48.2110, 10.2490, 26.1250



43.7620, -2.3477, 6.3477



179.0000, 0.0000, 0.0000



51.0000, 0.0000, 0.0000

Same Dimension

The Same Dimension uses a secret algorithm to generate beautiful new colors.



48.9340, -9.8275, 25.4909



56.9420, -15.2544, 39.5159



63.0220, -16.7728, 13.1357



35.7830, -0.8790, 1.9443



41.6510, -20.5339, 52.9261



93.4240, -46.0580, 119.7772

Inverse Universe

The Inverse Universe completely reimagines the original color for something new.



58.0660, 9.8275, -25.4909



71.0580, 15.2544, -39.5159



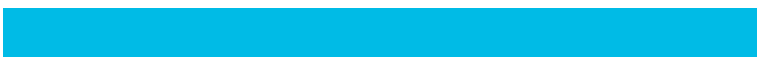
43.9780, 16.7728, -13.1357



36.8040, 0.5896, -2.4591



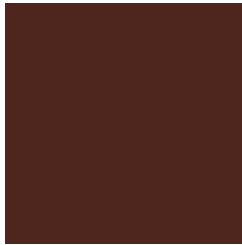
60.3490, 20.5339, -52.9261



135.9890, 46.3474, -119.2624

Previews

White Background



This preview shows how the YUV color 48.9340, -9.8275, 25.4909 looks on a white background.

Color Contrast Check

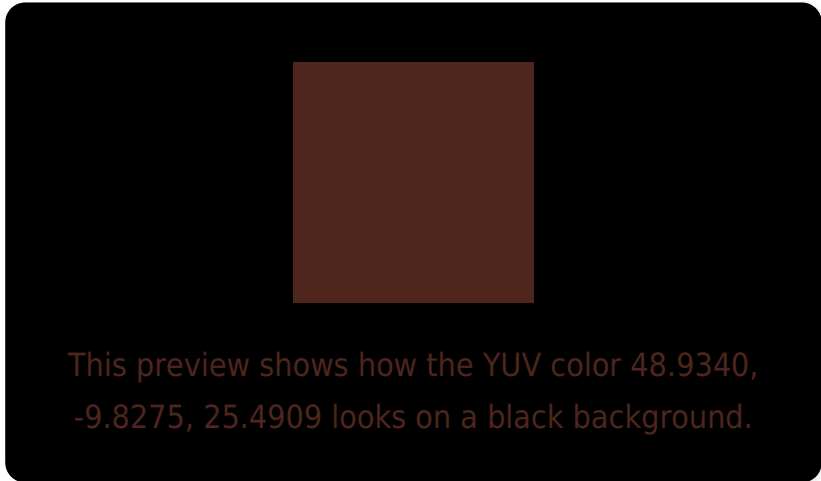
Large Text (above 18pt) WCAG AA ✓ Pass

Any Text WCAG AA ✓ Pass

Large Text (above 18pt) WCAG AAA ✓ Pass

Any Text WCAG AAA ✓ Pass

Black Background



Color Contrast Check

Large Text (above 18pt) WCAG AA × Fail

Any Text WCAG AA × Fail

Large Text (above 18pt) WCAG AAA × Fail

Any Text WCAG AAA × Fail

If you want to check with other color combinations, try the [Color Contrast Checker](#).

YUV 48.9340, -9.8275, 25.4909

Background



This preview shows how black text looks on a background with the YUV color 48.9340, -9.8275, 25.4909.

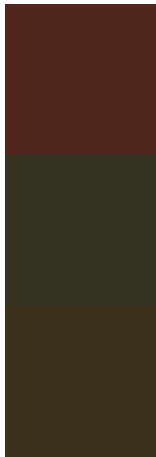


This preview shows how white text looks on a background with the YUV color 48.9340, -9.8275,

Color Blindness Simulation

Color vision deficiency is a very complex topic, and I could not describe the different causes any better than Wikipedia does, so if you want to learn more, you should check out their [article about color blindness](#).

Dichromacy



Original Color

48.9340, -9.8275, 25.4909

Protanopia

49.3720, -7.5784, 4.0588

Deuteranopia

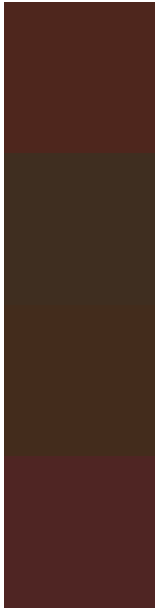
49.4930, -11.0890, 10.0916



Tritanopia

49.7860, -5.3175, 25.6207

Trichromacy



Original Color

48.9340, -9.8275, 25.4909

Protanomaly

49.4870, -8.6211, 11.8509

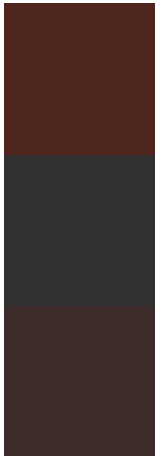
Deuteranomaly

49.0530, -10.3791, 15.7395

Tritanomaly

49.3300, -7.0647, 26.0206

Monochromacy



Original Color

48.9340, -9.8275, 25.4909

Achromatopsia

49.0000, 0.0000, 0.0000

Achromatomaly

49.1430, -3.5215, 9.5216

CSS Examples

Text

The CSS property to change the color of the text to YUV 48.9340, -9.8275, 25.4909 is called "color". The color property can be set on classes, ids or directly on the HTML element.

This example shows how text in the color `rgb(78, 38, 29)` looks like.

```
.text, #text, p{  
    color:rgb(78, 38, 29)  
}
```

If you want to add a text shadow in that color use the text-shadow property, you can generate a text shadow directly with our [CSS Text Shadow Generator](#).

Here you see how black text with a 4 pixel rgb(78, 38, 29) colored shadow looks like.

```
.shadow{ text-shadow: 4px 4px 2px rgb(78, 38, 29) }
```

Border

The CSS property to change the border of an element to YUV 48.9340, -9.8275, 25.4909 is called "border". The border property can be set on classes, ids or directly on the HTML element.

This example shows the color as border, it can be applied via the CSS property "border" or "border-color".

```
.border, #border, table{ border:4px solid rgb(78, 38, 29) }
```


If only the border color should be changed use the property `border-color`.

```
.border{ border-color:rgb(78, 38, 29) }
```

If you want to add a box shadow in that color use:

Here you see how a box with a 4 pixel `rgb(78, 38, 29)` colored shadow looks like.

```
.boxshadow{ -moz-box-shadow:4px 4px 4px  
4px rgb(78, 38, 29); -webkit-box-  
shadow:4px 4px 4px 4px rgb(78, 38, 29);  
box-shadow:4px 4px 4px 4px rgb(78, 38, 29)  
}
```

Background

The CSS property to change the background color of an element to YUV 48.9340, -9.8275, 25.4909 is called "background". The background property can be set on classes, ids or directly on the HTML element.

```
.background, #background, body{  
background: rgb(78, 38, 29) }
```

If only the background color should be changed can be used:

```
.background{ background-color: rgb(78, 38,  
29) }
```

This example shows the color as background, it is applied via the CSS property "background".

To optimize and compress your CSS code, you can use our [online CSS compressor and optimizer](#) based on csstidy. If you want to create a linear or radial gradient as background or border, check our [CSS Gradient Generator](#).

Hey! You found this booklet interesting? Support Converting Colors with the new Membership Option!

The pro membership hides all ads, plus gives you double the colors in the color bucket, and more awesome pro features!

[Learn more, Memberships starting at \\$2.50/m!](#)

**Follow me
on Twitter!**

@ConvertingColor