

# Converting Colors

YUV(49.3120, -3.1118, 18.1434)

Have a look what the booklet for  
YUV(49.3120, -3.1118, 18.1434)  
contains.

<b>YUV(49.3120, -3.1118, 18.1434)</b> .....	3
<b><i>Conversions</i></b> .....	4
<b><i>Details</i></b> .....	6
<b><i>Harmonies</i></b> .....	12
<b><i>Previews</i></b> .....	24
<b><i>Color Blindness Simulation</i></b> .....	28
<b><i>CSS Examples</i></b> .....	31

# Color

**YUV(49.3120, -3.1118,  
18.1434)**

# Conversions

## Conversions Part 1

Format	Color
Hex	46282B
RGB	70, 40, 43
RGB Percent	27%, 16%, 17%
CMY	0.7255, 0.8431, 0.8314
CMYK	0.00, 0.43, 0.39, 0.73
HSL	354°, 27%, 22%
HSV	354°, 43%, 27%
XYZ	3.7206, 2.9941, 2.6673
YIQ	49.3120, 16.9170, 7.2930

# Conversions

## Conversions Part 2

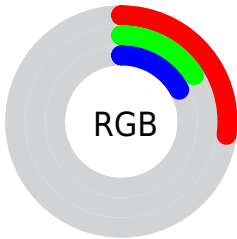
<b>Format</b>	<b>Color</b>
<b>R<sub>YB</sub></b>	70, 40, 43
Decimal	4597803
CIE <sub>Lab</sub>	20.02, 14.51, 4.02
CIE <sub>LCh</sub>	20, 15.057, 15.478
Yxy	2.9941, 0.3966, 0.3191
Android (android.graphics.Color)	4282787883 (0xFF46282B)
YUV	49.3120, -3.1118, 18.1434
Hunter-Lab	17.3034, 8.1004, 2.9729

# Details

The YUV color **49.3120, -3.1118, 18.1434** is a dark color, and the websafe version is hex **663333**. A complement of this color would be **60.6880, 3.1118, -18.1434**, and the grayscale version is **49.0000, 0.0000, 0.0000**.

A 20% lighter version of the original color is **96.3940, -4.1382, 20.7025**, and **8.4860, -3.6906, 17.1138** is the 20% darker color. If you saturate the color by 10%, you get **44.5190, -3.7069, 22.3468**, and if you desaturate by 10%, it is **54.1050, -2.5168, 13.9399**.

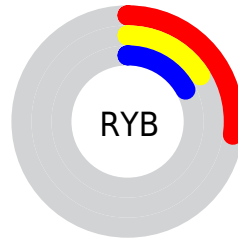
# Distribution



Red (27%)

Green (16%)

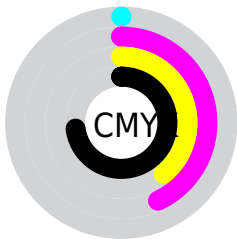
Blue (17%)



Red (27%)

Yellow (16%)

Blue (17%)

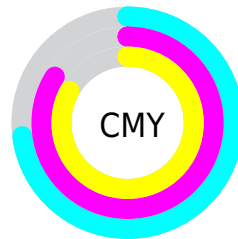


Cyan (0%)

Magenta (43%)

Yellow (39%)

Black (73%)



Cyan (73%)

Magenta (84%)

Yellow (83%)

# Brightness & Saturation Gradients

These gradients show how the YUV color 49.3120, -3.1118, 18.1434 changes by changing the brightness by 10 percent. The first figure shows a shift by +10% for each color and the second figure -10%.

Similar to the brightness gradients but the following saturation gradients show a change of the YUV color 49.3120, -3.1118, 18.1434 by changing the saturation by 10% instead.



■ 49.3120, -3.1118,  
18.1434

■ 49.3120, -3.1118,  
18.1434

■ 255.0000, 0.0000,  
0.0000

■ 27.8280, -2.3802,  
16.8138

■ 96.3940, -4.1382,  
20.7025

■ 8.4860, -3.6906,  
17.1138

■ 121.1060, -3.9963,  
21.8320

■ 0.0000, 0.0000,  
0.0000

■ 147.2910, -4.5805,  
22.5468

■ 173.5900, -4.7279,  
23.1616

■ 200.8890, -4.8753,  
23.7763

■ 228.5900, -4.7279,

23.1616

248.3320, -0.1637,  
5.8478

49.3120, -3.1118,  
18.1434

49.3120, -3.1118,  
18.1434

44.5190, -3.7069,  
22.3468

54.1050, -2.5168,  
13.9399

39.6120, -4.7387,  
26.6503

59.0120, -1.4849,  
9.6365

34.8190, -5.3338,  
30.8537

63.8050, -0.8899,  
5.4330

30.0260, -5.9288,  
35.0572

68.5980, -0.2948,  
1.2296

25.2330, -6.5239,  
39.2607

73.5050, 0.7370,  
-3.0739

■ 21.7280, -7.2609,  
42.3345

■ 78.2980, 1.3321,  
-7.2773

■ 83.0910, 1.9271,  
-11.4808

■ 87.8840, 2.5222,  
-15.6843

■ 92.7910, 3.5540,  
-19.9877

# Harmonies

## Analogous

The Analogous color harmony consists of three colors that are next to each other on the color wheel.



49.3700, 2.2826, 14.5845



49.3120, -3.1118, 18.1434



48.7480, -7.7638, 16.8840

# Triad

The Triadic color harmony groups three colors that are evenly spaced from another and form a triangle on the color wheel.



49.3120, -3.1118, 18.1434



45.6480, -6.2355, -6.7073



44.9790, 11.8424, -18.3986

# Complementary

The Complementary color scheme is a pair of colors which are on the opposite of each other on the color wheel.



49.3120, -3.1118, 18.1434



60.6880, 3.1118, -18.1434

# Split Complementary

Split-complementary colors differ from the complementary color scheme. The scheme consists of three colors, the original color and two neighbors of the complement color.



40.7990, 11.4381, -28.7647



49.3120, -3.1118, 18.1434



43.6620, -0.8194, -17.2436

# Square

The Square scheme is like the rectangle color scheme, but the four colors are evenly spaced on the color wheel.



49.3120, -3.1118, 18.1434



46.7910, -9.7570, 2.8143



40.8440, 6.4859, -27.0502



48.0130, 10.3466, -5.2734



# Rectangle

The Rectangle color scheme consists of four colors that form a rectangle on the color wheel.



49.3120, -3.1118, 18.1434



48.5580, -9.6421, 12.6656



40.8440, 6.4859, -27.0502



43.6580, 12.0006, -22.5021

# Sweetspot

The Sweet Spot groups the original color and five complimentary colors.



49.3120, -3.1118, 18.1434



83.7020, -1.3321, 7.2773



51.4930, 9.1240, 13.5996



41.0930, -1.0318, 4.3034



173.0000, 0.0000, 0.0000



46.0000, 0.0000, 0.0000



# Same Dimension

The Same Dimension uses a secret algorithm to generate beautiful new colors.



49.3120, -3.1118, 18.1434



59.6230, -4.7441, 28.3946



56.0140, -7.8949, 12.2657



33.1960, -0.5896, 2.4591



30.7410, -10.2253, 59.8631



70.4950, -23.4150, 137.2549



# Inverse Universe

The Inverse Universe completely reimagines the original color for something new.



49.3120, -3.1118, 18.1434



59.6230, -4.7441, 28.3946



53.9860, 7.8949, -12.2657



33.1960, -0.5896, 2.4591



30.7410, -10.2253, 59.8631

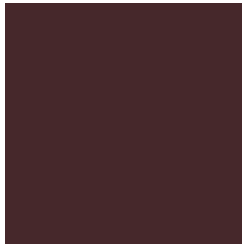


70.4950, -23.4150, 137.2549



# Previews

## White Background



This preview shows how the YUV color 49.3120, -3.1118, 18.1434 looks on a white background.

## Color Contrast Check

Large Text (above 18pt) WCAG AA ✓ Pass

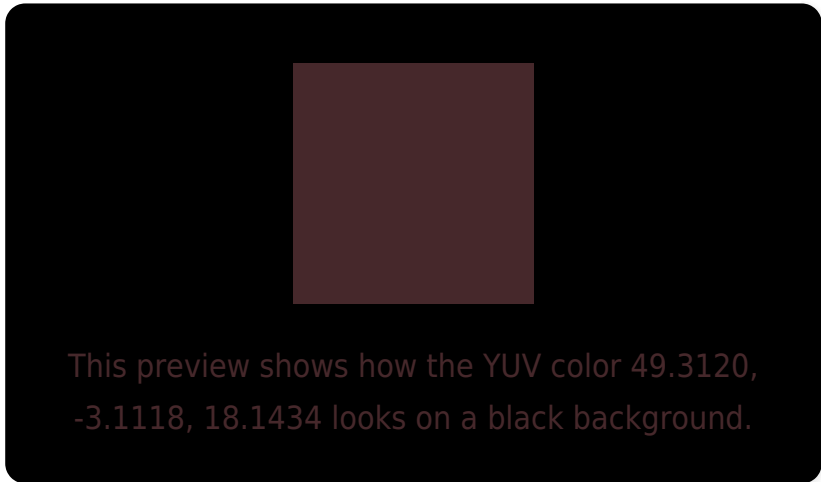
Any Text WCAG AA ✓ Pass

Large Text (above 18pt) WCAG AAA ✓ Pass

Any Text WCAG AAA ✓ Pass



# Black Background



## Color Contrast Check

Large Text (above 18pt) WCAG AA × Fail

Any Text WCAG AA × Fail

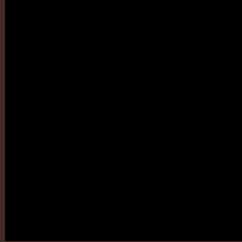
Large Text (above 18pt) WCAG AAA × Fail

Any Text WCAG AAA × Fail

If you want to check with other color combinations, try the [Color Contrast Checker](#).

# YUV 49.3120, -3.1118, 18.1434

## Background



This preview shows how black text looks on a background with the YUV color 49.3120, -3.1118, 18.1434.



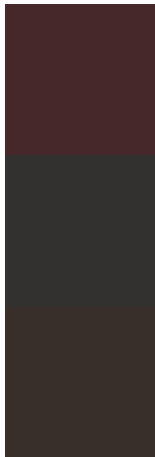
This preview shows how white text looks on a background with the YUV color 49.3120, -3.1118,



# Color Blindness Simulation

Color vision deficiency is a very complex topic, and I could not describe the different causes any better than Wikipedia does, so if you want to learn more, you should check out their [article about color blindness](#).

## Dichromacy



### Original Color

49.3120, -3.1118, 18.1434

### Protanopia

49.1850, -0.5842, 0.7148

### Deuteranopia

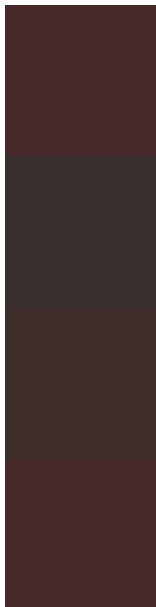
49.1210, -3.5107, 6.0329



## Tritanopia

49.3120, -3.1118, 18.1434

# Trichromacy



## Original Color

49.3120, -3.1118, 18.1434

## Protanomaly

49.2890, -1.6215, 6.7625

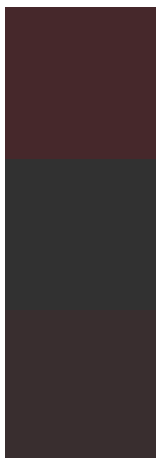
## Deuteranomaly

48.8550, -3.3795, 10.6512

## Tritanomaly

49.3120, -3.1118, 18.1434

# Monochromacy



## Original Color

49.3120, -3.1118, 18.1434

## Achromatopsia

49.0000, 0.0000, 0.0000

## Achromatomaly

49.4030, -1.1847, 6.6626

# CSS Examples

## Text

The CSS property to change the color of the text to YUV 49.3120, -3.1118, 18.1434 is called "color". The color property can be set on classes, ids or directly on the HTML element.

This example shows how text in the color `rgb(70, 40, 43)` looks like.

```
.text, #text, p{  
    color:rgb(70, 40, 43)  
}
```

If you want to add a text shadow in that color use the text-shadow property, you can generate a text shadow directly with our [CSS Text Shadow Generator](#).

Here you see how black text with a 4 pixel rgb(70, 40, 43) colored shadow looks like.

```
.shadow{ text-shadow: 4px 4px 2px rgb(70, 40, 43) }
```

## Border

The CSS property to change the border of an element to YUV 49.3120, -3.1118, 18.1434 is called "border". The border property can be set on classes, ids or directly on the HTML element.

This example shows the color as border, it can be applied via the CSS property "border" or "border-color".

```
.border, #border, table{ border:4px solid rgb(70, 40, 43) }
```



If only the border color should be changed use the property `border-color`.

```
.border{ border-color:rgb(70, 40, 43) }
```

If you want to add a box shadow in that color use:

Here you see how a box with a 4 pixel `rgb(70, 40, 43)` colored shadow looks like.

```
.boxshadow{ -moz-box-shadow:4px 4px 4px  
4px rgb(70, 40, 43); -webkit-box-  
shadow:4px 4px 4px 4px rgb(70, 40, 43);  
box-shadow:4px 4px 4px 4px rgb(70, 40, 43)  
}
```

# Background

The CSS property to change the background color of an element to YUV 49.3120, -3.1118, 18.1434 is called "background". The background property can be set on classes, ids or directly on the HTML element.

```
.background, #background, body{  
background: rgb(70, 40, 43) }
```

If only the background color should be changed can be used:

```
.background{ background-color: rgb(70, 40,  
43) }
```

This example shows the color as background, it is applied via the CSS property "background".

To optimize and compress your CSS code, you can use our [online CSS compressor and optimizer](#) based on csstidy. If you want to create a linear or radial gradient as background or border, check our [CSS Gradient Generator](#).

Hey! You found this booklet  
interesting? Support Converting  
Colors with the new Membership  
Option!

The pro membership hides all ads, plus gives you  
double the colors in the color bucket, and more  
awesome pro features!

**[Learn more, Memberships starting at \\$2.50/m!](#)**

**Follow me  
on Twitter!**

@ConvertingColor