

# Converting Colors

YUV(49.5730, -2.2545, 23.1765)

Have a look what the booklet for  
YUV(49.5730, -2.2545, 23.1765)  
contains.

<b>YUV(49.5730, -2.2545, 23.1765)</b> .....	3
<b><i>Conversions</i></b> .....	4
<b><i>Details</i></b> .....	6
<b><i>Harmonies</i></b> .....	12
<b><i>Previews</i></b> .....	24
<b><i>Color Blindness Simulation</i></b> .....	28
<b><i>CSS Examples</i></b> .....	31

# Color

**YUV(49.5730, -2.2545,  
23.1765)**

# Conversions

## Conversions Part 1

<b>Format</b>	<b>Color</b>
Hex	4C252D
RGB	76, 37, 45
RGB Percent	30%, 15%, 18%
CMY	0.7020, 0.8549, 0.8235
CMYK	0.00, 0.51, 0.41, 0.70
HSL	348°, 35%, 22%
HSV	348°, 51%, 30%
XYZ	4.1157, 3.0491, 2.8542
YIQ	49.5730, 20.6760, 10.7560

# Conversions

## Conversions Part 2

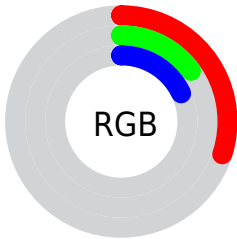
<b>Format</b>	<b>Color</b>
<b>RYB</b>	76, 37, 45
Decimal	4990253
CIELab	20.24, 19.37, 3.07
CIElCh	20, 19.616, 9.004
Yxy	3.0491, 0.4108, 0.3043
Android (android.graphics.Color)	4283180333 (0xFF4C252D)
YUV	49.5730, -2.2545, 23.1765
Hunter-Lab	17.4617, 11.5145, 2.5318

# Details

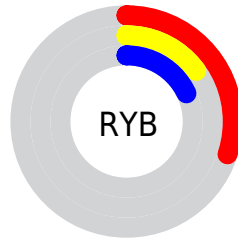
The YUV color **49.5730, -2.2545, 23.1765** is a dark color, and the websafe version is hex **663333**. A complement of this color would be **63.4270, 2.2545, -23.1765**, and the grayscale version is **50.0000, 0.0000, 0.0000**.

A 20% lighter version of the original color is **97.0680, -2.9915, 26.2504**, and **10.2800, -4.5750, 20.8024** is the 20% darker color. If you saturate the color by 10%, you get **44.1930, -2.5601, 27.8947**, and if you desaturate by 10%, it is **54.9530, -1.9488, 18.4582**.

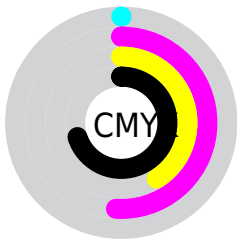
# Distribution



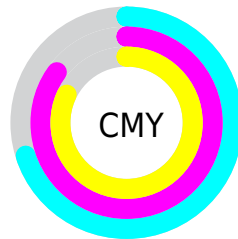
- Red (30%)
- Green (15%)
- Blue (18%)



- Red (30%)
- Yellow (15%)
- Blue (18%)



- Cyan (0%)
- Magenta (51%)
- Yellow (41%)
- Black (70%)



- Cyan (70%)
- Magenta (85%)
- Yellow (82%)

# Brightness & Saturation Gradients

These gradients show how the YUV color 49.5730, -2.2545, 23.1765 changes by changing the brightness by 10 percent. The first figure shows a shift by +10% for each color and the second figure -10%.

Similar to the brightness gradients but the following saturation gradients show a change of the YUV color 49.5730, -2.2545, 23.1765 by changing the saturation by 10% instead.



■ 49.5730, -2.2545,  
23.1765

■ 49.5730, -2.2545,  
23.1765

■ 255.0000, 0.0000,  
0.0000

■ 27.6760, -1.8123,  
21.3321

■ 97.0680, -2.9915,  
26.2504

■ 10.2800, -4.5750,  
20.8024

■ 121.6660, -3.2863,  
27.4799

■ 0.0000, 0.0000,  
0.0000

■ 147.9650, -3.4337,  
28.0947

■ 174.5630, -3.7286,  
29.3242

■ 202.1610, -4.0234,  
30.5538

■ 227.1710, -2.5493,

24.4060

247.3860, 1.2887,  
6.6775

49.5730, -2.2545,  
23.1765

49.5730, -2.2545,  
23.1765

44.1930, -2.5601,  
27.8947

54.9530, -1.9488,  
18.4582

39.4000, -3.1552,  
32.0982

59.7460, -1.3538,  
14.2548

34.0200, -3.4609,  
36.8165

65.1260, -1.0481,  
9.5365

29.2270, -4.0559,  
41.0199

69.9190, -0.4531,  
5.3330

24.5480, -4.2142,  
45.1234

75.2990, -0.1474,  
0.6148

■ 80.6790, 0.1583,  
-4.1035

■ 85.4720, 0.7533,  
-8.3069

■ 90.8520, 1.0590,  
-13.0252

■ 95.6450, 1.6540,  
-17.2287

# Harmonies

## Analogous

The Analogous color harmony consists of three colors that are next to each other on the color wheel.



50.5490, 4.1663, 17.0585



49.5730, -2.2545, 23.1765



49.1400, -8.9430, 21.8022

# Triad

The Triadic color harmony groups three colors that are evenly spaced from another and form a triangle on the color wheel.



49.5730, -2.2545, 23.1765



45.4370, -9.5824, -6.5222



39.6610, 17.4221, -34.7827

# Complementary

The Complementary color scheme is a pair of colors which are on the opposite of each other on the color wheel.



49.5730, -2.2545, 23.1765



63.4270, 2.2545, -23.1765

# Split Complementary

Split-complementary colors differ from the complementary color scheme. The scheme consists of three colors, the original color and two neighbors of the complement color.



40.3960, 12.6228, -35.4273



49.5730, -2.2545, 23.1765



41.9990, -1.9715, -21.0471

# Square

The Square scheme is like the rectangle color scheme, but the four colors are evenly spaced on the color wheel.



49.5730, -2.2545, 23.1765



46.8900, -13.2568, 5.3585



38.9140, 6.9444, -34.1276



47.4080, 14.5889, -12.6358



# Rectangle

The Rectangle color scheme consists of four colors that form a rectangle on the color wheel.



49.5730, -2.2545, 23.1765



48.7220, -11.6949, 17.7838



38.9140, 6.9444, -34.1276



40.0200, 16.2591, -35.0975

# Sweetspot

The Sweet Spot groups the original color and five complimentary colors.



49.5730, -2.2545, 23.1765



89.5280, -0.7533, 8.3069



50.7150, 12.4655, 15.1589



44.9190, -0.4531, 5.3330



179.0000, 0.0000, 0.0000



51.0000, 0.0000, 0.0000



# Same Dimension

The Same Dimension uses a secret algorithm to generate beautiful new colors.



49.5730, -2.2545, 23.1765



57.6070, -3.7503, 36.3017



55.1180, -8.9322, 18.3135



35.3100, -0.1528, 2.3591



32.8920, -5.8628, 60.6077



74.1280, -13.3741, 136.6997



# Inverse Universe

The Inverse Universe completely reimagines the original color for something new.



49.5730, -2.2545, 23.1765



57.6070, -3.7503, 36.3017



57.8820, 8.9322, -18.3135



35.3100, -0.1528, 2.3591



32.8920, -5.8628, 60.6077

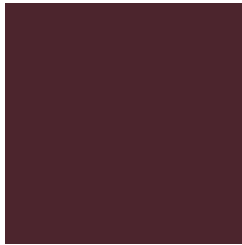


74.1280, -13.3741, 136.6997



# Previews

## White Background



This preview shows how the YUV color 49.5730, -2.2545, 23.1765 looks on a white background.

## Color Contrast Check

Large Text (above 18pt) WCAG AA ✓ Pass

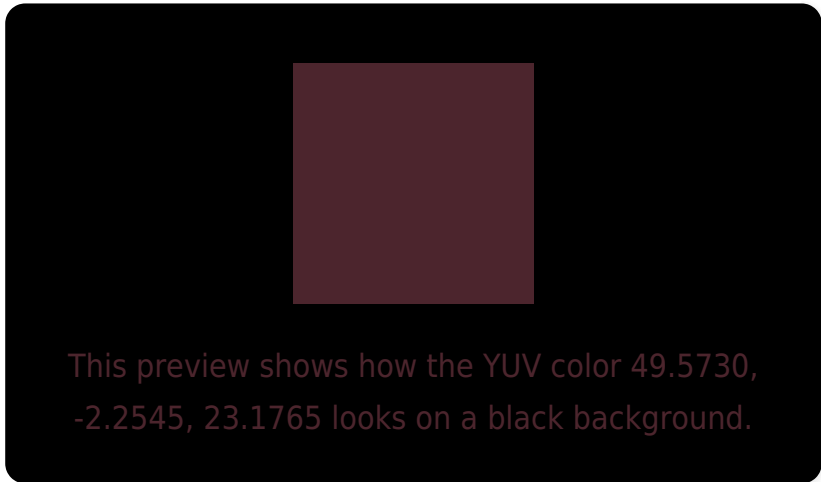
Any Text WCAG AA ✓ Pass

Large Text (above 18pt) WCAG AAA ✓ Pass

Any Text WCAG AAA ✓ Pass



# Black Background



## Color Contrast Check

Large Text (above 18pt) WCAG AA × Fail

Any Text WCAG AA × Fail

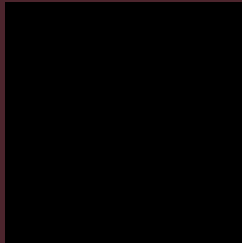
Large Text (above 18pt) WCAG AAA × Fail

Any Text WCAG AAA × Fail

If you want to check with other color combinations, try the [Color Contrast Checker](#).

**YUV 49.5730, -2.2545, 23.1765**

## **Background**



This preview shows how black text looks on a background with the YUV color 49.5730, -2.2545, 23.1765.



This preview shows how white text looks on a background with the YUV color 49.5730, -2.2545,



# Color Blindness Simulation

Color vision deficiency is a very complex topic, and I could not describe the different causes any better than Wikipedia does, so if you want to learn more, you should check out their [article about color blindness](#).

## Dichromacy



### Original Color

49.5730, -2.2545, 23.1765

### Protanopia

49.6410, 1.1630, 0.3148

### Deuteranopia

50.1210, -3.5107, 6.0329



## Tritanopia

49.5900, -4.7279, 23.1616

# Trichromacy



## Original Color

49.5730, -2.2545, 23.1765

## Protanomaly

49.6420, -0.3165, 8.2070

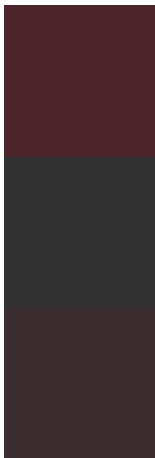
## Deuteranomaly

49.9800, -2.9481, 12.2955

## Tritanomaly

49.8180, -3.8543, 22.9616

# Monochromacy



## Original Color

49.5730, -2.2545, 23.1765

## Achromatopsia

50.0000, 0.0000, 0.0000

## Achromatomaly

49.5280, -0.7533, 8.3069

# CSS Examples

## Text

The CSS property to change the color of the text to YUV 49.5730, -2.2545, 23.1765 is called "color". The color property can be set on classes, ids or directly on the HTML element.

This example shows how text in the color `rgb(76, 37, 45)` looks like.

```
.text, #text, p{  
    color:rgb(76, 37, 45)  
}
```

If you want to add a text shadow in that color use the text-shadow property, you can generate a text shadow directly with our [CSS Text Shadow Generator](#).

Here you see how black text with a 4 pixel rgb(76, 37, 45) colored shadow looks like.

```
.shadow{ text-shadow: 4px 4px 2px rgb(76, 37, 45) }
```

## Border

The CSS property to change the border of an element to YUV 49.5730, -2.2545, 23.1765 is called "border". The border property can be set on classes, ids or directly on the HTML element.

This example shows the color as border, it can be applied via the CSS property "border" or "border-color".

```
.border, #border, table{ border:4px solid rgb(76, 37, 45) }
```



If only the border color should be changed use the property `border-color`.

```
.border{ border-color:rgb(76, 37, 45) }
```

If you want to add a box shadow in that color use:

Here you see how a box with a 4 pixel `rgb(76, 37, 45)` colored shadow looks like.

```
.boxshadow{ -moz-box-shadow:4px 4px 4px  
4px rgb(76, 37, 45); -webkit-box-  
shadow:4px 4px 4px 4px rgb(76, 37, 45);  
box-shadow:4px 4px 4px 4px rgb(76, 37, 45)  
}
```

# Background

The CSS property to change the background color of an element to YUV 49.5730, -2.2545, 23.1765 is called "background". The background property can be set on classes, ids or directly on the HTML element.

```
.background, #background, body{  
background: rgb(76, 37, 45) }
```

If only the background color should be changed can be used:

```
.background{ background-color: rgb(76, 37,  
45) }
```

This example shows the color as background, it is applied via the CSS property "background".

To optimize and compress your CSS code, you can use our [online CSS compressor and optimizer](#) based on csstidy. If you want to create a linear or radial gradient as background or border, check our [CSS Gradient Generator](#).

# Hey! You found this booklet interesting? Support Converting Colors with the new Membership Option!

The pro membership hides all ads, plus gives you double the colors in the color bucket, and more awesome pro features!

**[Learn more, Memberships starting at \\$2.50/m!](#)**

**Follow me  
on Twitter!**

@ConvertingColor