

# Converting Colors

YUV(50.3080, -7.0538, 22.5319)

Have a look what the booklet for  
YUV(50.3080, -7.0538, 22.5319)  
contains.

<b>YUV(50.3080, -7.0538, 22.5319)</b> .....	3
<b><i>Conversions</i></b> .....	4
<b><i>Details</i></b> .....	6
<b><i>Harmonies</i></b> .....	12
<b><i>Previews</i></b> .....	24
<b><i>Color Blindness Simulation</i></b> .....	28
<b><i>CSS Examples</i></b> .....	31

# Color

**YUV(50.3080, -7.0538,  
22.5319)**

# Conversions

## Conversions Part 1

<b>Format</b>	<b>Color</b>
Hex	4C2824
RGB	76, 40, 36
RGB Percent	30%, 16%, 14%
CMY	0.7020, 0.8431, 0.8588
CMYK	0.00, 0.47, 0.53, 0.70
HSL	6°, 36%, 22%
HSV	6°, 53%, 30%
XYZ	4.0577, 3.1815, 2.0693
YIQ	50.3080, 22.7400, 6.3880

# Conversions

## Conversions Part 2

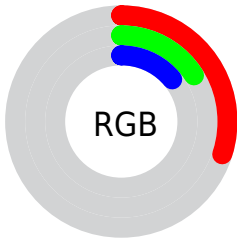
<b>Format</b>	<b>Color</b>
<b>R<sub>YB</sub></b>	76, 40, 36
Decimal	4991012
CIE Lab	20.76, 16.32, 10.00
CIE LCh	21, 19.138, 31.504
Yxy	3.1815, 0.4359, 0.3418
Android (android.graphics.Color)	4283181092 (0xFF4C2824)
YUV	50.3080, -7.0538, 22.5319
Hunter-Lab	17.8366, 9.3935, 5.6072

# Details

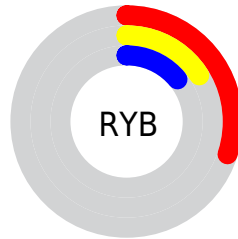
The YUV color **50.3080, -7.0538, 22.5319** is a dark color, and the websafe version is hex **663333**. A complement of this color would be **61.6920, 7.0538, -22.5319**, and the grayscale version is **50.0000, 0.0000, 0.0000**.

A 20% lighter version of the original color is **97.5750, -8.6645, 25.8057**, and **9.5680, -4.7170, 19.6729** is the 20% darker color. If you saturate the color by 10%, you get **45.2870, -8.5225, 26.9353**, and if you desaturate by 10%, it is **55.3290, -5.5852, 18.1285**.

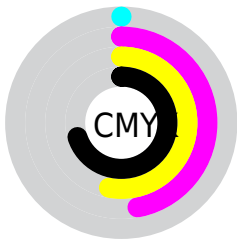
# Distribution



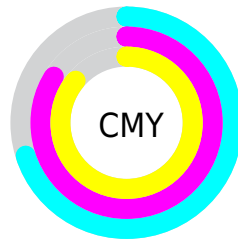
- Red (30%)
- Green (16%)
- Blue (14%)



- Red (30%)
- Yellow (16%)
- Blue (14%)



- Cyan (0%)
- Magenta (47%)
- Yellow (53%)
- Black (70%)



- Cyan (70%)
- Magenta (84%)
- Yellow (86%)

# Brightness & Saturation Gradients

These gradients show how the YUV color 50.3080, -7.0538, 22.5319 changes by changing the brightness by 10 percent. The first figure shows a shift by +10% for each color and the second figure -10%.

Similar to the brightness gradients but the following saturation gradients show a change of the YUV color 50.3080, -7.0538, 22.5319 by changing the saturation by 10% instead.



■ 50.3080, -7.0538,  
22.5319

■ 50.3080, -7.0538,  
22.5319

■ 255.0000, 0.0000,  
0.0000

■ 28.4110, -6.6116,  
20.6876

■ 97.5750, -8.6645,  
25.8057

■ 9.5680, -4.7170,  
19.6729

■ 122.5860, -8.6699,  
27.5501

■ 0.0000, 0.0000,  
0.0000

■ 148.7710, -9.2541,  
28.2648

■ 175.3690, -9.5489,  
29.4944

■ 202.9670, -9.8437,  
30.7239

■ 227.5640, -8.6591,

24.0614

247.7790, -4.8210,  
6.3328

50.3080, -7.0538,  
22.5319

50.3080, -7.0538,  
22.5319

45.2870, -8.5225,  
26.9353

55.3290, -5.5852,  
18.1285

40.3800, -9.5543,  
31.2387

60.2360, -4.5533,  
13.8250

35.3590, -11.0230,  
35.6422

65.2570, -3.0847,  
9.4216

31.0390, -12.3442,  
39.4308

69.5770, -1.7635,  
5.6330

27.4200, -13.5181,  
42.6047

74.5980, -0.2948,  
1.2296

■ 79.6190, 1.1738,  
-3.1739

■ 84.5260, 2.2057,  
-7.4773

■ 89.5470, 3.6743,  
-11.8807

■ 94.4540, 4.7062,  
-16.1842

# Harmonies

## Analogous

The Analogous color harmony consists of three colors that are next to each other on the color wheel.



51.3170, -0.6493, 21.6470



50.3080, -7.0538, 22.5319



49.3090, -11.9843, 17.2690

# Triad

The Triadic color harmony groups three colors that are evenly spaced from another and form a triangle on the color wheel.



50.3080, -7.0538, 22.5319



44.7500, -4.3137, -16.4438



47.2010, 15.1839, -16.8393

# Complementary

The Complementary color scheme is a pair of colors which are on the opposite of each other on the color wheel.



50.3080, -7.0538, 22.5319



61.6920, 7.0538, -22.5319

# Split Complementary

Split-complementary colors differ from the complementary color scheme. The scheme consists of three colors, the original color and two neighbors of the complement color.



40.7210, 16.4065, -35.7123



50.3080, -7.0538, 22.5319



39.1590, 5.3446, -34.3424

# Square

The Square scheme is like the rectangle color scheme, but the four colors are evenly spaced on the color wheel.



50.3080, -7.0538, 22.5319



46.8180, -10.7563, -3.3484



40.7550, 11.4598, -35.7421



50.9860, 11.3459, 0.8893



# Rectangle

The Rectangle color scheme consists of four colors that form a rectangle on the color wheel.



50.3080, -7.0538, 22.5319



49.2220, -13.4204, 11.2063



40.7550, 11.4598, -35.7421



45.3850, 16.0792, -24.0166

# Sweetspot

The Sweet Spot groups the original color and five complimentary colors.



50.3080, -7.0538, 22.5319



89.0720, -2.5005, 8.7069



52.0640, 9.8284, 20.9919



44.5770, -1.7635, 5.6330



179.0000, 0.0000, 0.0000



51.0000, 0.0000, 0.0000



# Same Dimension

The Same Dimension uses a secret algorithm to generate beautiful new colors.



50.3080, -7.0538, 22.5319



59.0600, -10.8756, 35.0274



62.0480, -12.8417, 12.2359



35.7830, -0.8790, 1.9443



36.3680, -17.9294, 57.5593



82.2710, -40.5596, 129.5583



# Inverse Universe

The Inverse Universe completely reimagines the original color for something new.



61.6920, 7.0538, -22.5319



76.9400, 10.8756, -35.0274



49.9520, 12.8417, -12.2359



36.8040, 0.5896, -2.4591



65.6320, 17.9294, -57.5593

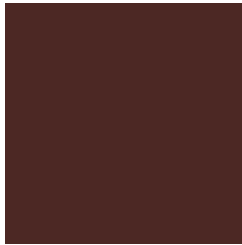


147.7290, 40.5596, -129.5583



# Previews

## White Background



This preview shows how the YUV color 50.3080, -7.0538, 22.5319 looks on a white background.

## Color Contrast Check

Large Text (above 18pt) WCAG AA ✓ Pass

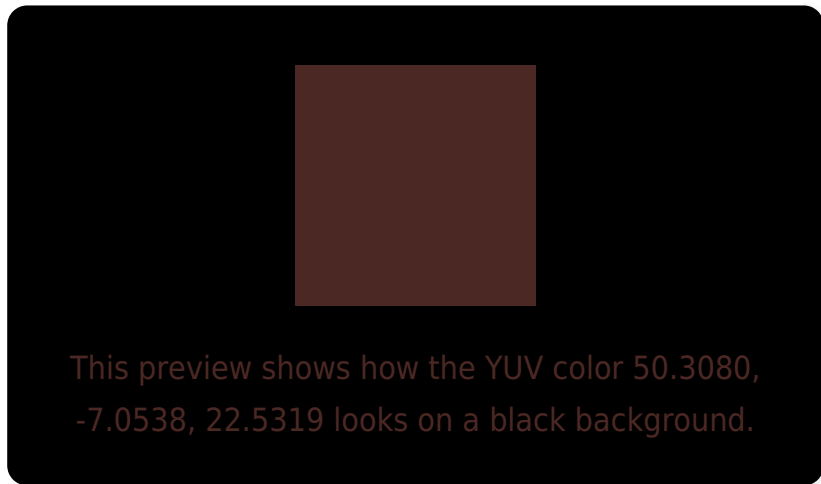
Any Text WCAG AA ✓ Pass

Large Text (above 18pt) WCAG AAA ✓ Pass

Any Text WCAG AAA ✓ Pass



# Black Background



## Color Contrast Check

Large Text (above 18pt) WCAG AA × Fail

Any Text WCAG AA × Fail

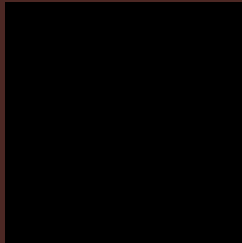
Large Text (above 18pt) WCAG AAA × Fail

Any Text WCAG AAA × Fail

If you want to check with other color combinations, try the [Color Contrast Checker](#).

# YUV 50.3080, -7.0538, 22.5319

## Background



This preview shows how black text looks on a background with the YUV color 50.3080, -7.0538, 22.5319.



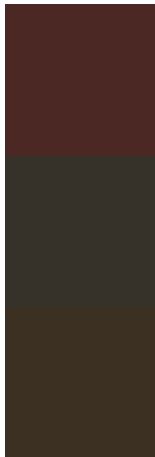
This preview shows how white text looks on a background with the YUV color 50.3080, -7.0538,



# Color Blindness Simulation

Color vision deficiency is a very complex topic, and I could not describe the different causes any better than Wikipedia does, so if you want to learn more, you should check out their [article about color blindness](#).

## Dichromacy



### Original Color

50.3080, -7.0538, 22.5319

### Protanopia

50.1700, -4.5208, 3.3589

### Deuteranopia

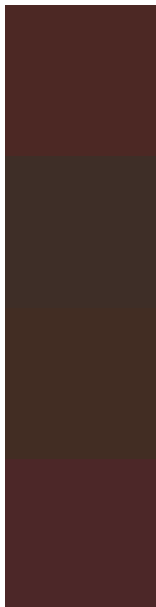
49.9920, -7.8841, 8.7770



## Tritanopia

50.4050, -4.1437, 22.4468

# Trichromacy



## Original Color

50.3080, -7.0538, 22.5319

## Protanomaly

49.9860, -5.4161, 10.5363

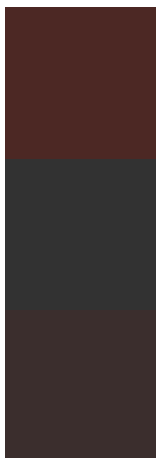
## Deuteranomaly

50.1390, -7.4635, 13.9101

## Tritanomaly

50.1770, -5.0173, 22.6468

# Monochromacy



## Original Color

50.3080, -7.0538, 22.5319

## Achromatopsia

50.0000, 0.0000, 0.0000

## Achromatomaly

49.7730, -2.3531, 8.0921

# CSS Examples

## Text

The CSS property to change the color of the text to YUV 50.3080, -7.0538, 22.5319 is called "color". The color property can be set on classes, ids or directly on the HTML element.

This example shows how text in the color `rgb(76, 40, 36)` looks like.

```
.text, #text, p{  
    color:rgb(76, 40, 36)  
}
```

If you want to add a text shadow in that color use the text-shadow property, you can generate a text shadow directly with our [CSS Text Shadow Generator](#).

Here you see how black text with a 4 pixel rgb(76, 40, 36) colored shadow looks like.

```
.shadow{ text-shadow: 4px 4px 2px rgb(76, 40, 36) }
```

## Border

The CSS property to change the border of an element to YUV 50.3080, -7.0538, 22.5319 is called "border". The border property can be set on classes, ids or directly on the HTML element.

This example shows the color as border, it can be applied via the CSS property "border" or "border-color".

```
.border, #border, table{ border:4px solid rgb(76, 40, 36) }
```



If only the border color should be changed use the property `border-color`.

```
.border{ border-color:rgb(76, 40, 36) }
```

If you want to add a box shadow in that color use:

Here you see how a box with a 4 pixel `rgb(76, 40, 36)` colored shadow looks like.

```
.boxshadow{ -moz-box-shadow:4px 4px 4px  
4px rgb(76, 40, 36); -webkit-box-  
shadow:4px 4px 4px 4px rgb(76, 40, 36);  
box-shadow:4px 4px 4px 4px rgb(76, 40, 36)  
}
```

# Background

The CSS property to change the background color of an element to YUV 50.3080, -7.0538, 22.5319 is called "background". The background property can be set on classes, ids or directly on the HTML element.

```
.background, #background, body{  
background: rgb(76, 40, 36) }
```

If only the background color should be changed can be used:

```
.background{ background-color: rgb(76, 40,  
36) }
```

This example shows the color as background, it is applied via the CSS property "background".

To optimize and compress your CSS code, you can use our [online CSS compressor and optimizer](#) based on csstidy. If you want to create a linear or radial gradient as background or border, check our [CSS Gradient Generator](#).

Hey! You found this booklet interesting? Support Converting Colors with the new Membership Option!

The pro membership hides all ads, plus gives you double the colors in the color bucket, and more awesome pro features!

**[Learn more, Memberships starting at \\$2.50/m!](#)**

**Follow me  
on Twitter!**

@ConvertingColor