

Converting Colors

YUV(50.3620, -5.6015, 23.3615)

Have a look what the booklet for
YUV(50.3620, -5.6015, 23.3615)
contains.

YUV(50.3620, -5.6015, 23.3615)	3
<i>Conversions</i>	4
<i>Details</i>	6
<i>Harmonies</i>	12
<i>Previews</i>	24
<i>Color Blindness Simulation</i>	28
<i>CSS Examples</i>	31

Color

**YUV(50.3620, -5.6015,
23.3615)**

Conversions

Conversions Part 1

Format	Color
Hex	4D2727
RGB	77, 39, 39
RGB Percent	30%, 15%, 15%
CMY	0.6980, 0.8471, 0.8471
CMYK	0.00, 0.49, 0.49, 0.70
HSL	0°, 33%, 23%
HSV	0°, 49%, 30%
XYZ	4.1523, 3.1753, 2.3135
YIQ	50.3620, 22.6480, 8.0560

Conversions

Conversions Part 2

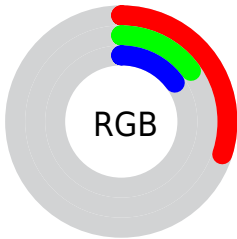
Format	Color
R_{YB}	77, 39, 39
Decimal	5056295
CIE _{Lab}	20.73, 17.77, 7.94
CIE _{LCh}	21, 19.459, 24.074
Yxy	3.1753, 0.4307, 0.3294
Android (android.graphics.Color)	4283246375 (0xFF4D2727)
YUV	50.3620, -5.6015, 23.3615
Hunter-Lab	17.8194, 10.4104, 4.7759

Details

The YUV color **50.3620, -5.6015, 23.3615** is a dark color, and the websafe version is hex **663333**. A complement of this color would be **65.6380, 5.6015, -23.3615**, and the grayscale version is **50.0000, 0.0000, 0.0000**.

A 20% lighter version of the original color is **97.7430, -6.7753, 26.5354**, and **9.8670, -4.8644, 20.2876** is the 20% darker color. If you saturate the color by 10%, you get **44.7540, -6.7807, 28.2797**, and if you desaturate by 10%, it is **55.9700, -4.4222, 18.4433**.

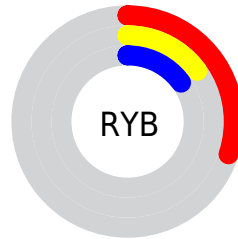
Distribution



Red (30%)

Green (15%)

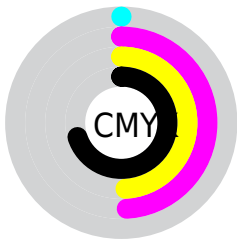
Blue (15%)



Red (30%)

Yellow (15%)

Blue (15%)

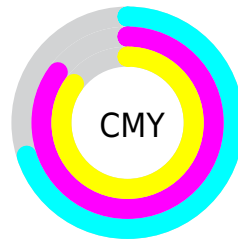


Cyan (0%)

Magenta (49%)

Yellow (49%)

Black (70%)



Cyan (70%)

Magenta (85%)

Yellow (85%)

Brightness & Saturation Gradients

These gradients show how the YUV color 50.3620, -5.6015, 23.3615 changes by changing the brightness by 10 percent. The first figure shows a shift by +10% for each color and the second figure -10%.

Similar to the brightness gradients but the following saturation gradients show a change of the YUV color 50.3620, -5.6015, 23.3615 by changing the saturation by 10% instead.

■ 50.3620, -5.6015,
23.3615

■ 50.3620, -5.6015,
23.3615

■ 255.0000, 0.0000,
0.0000

■ 28.5790, -4.7224,
21.4172

■ 97.7430, -6.7753,
26.5354

■ 9.8670, -4.8644,
20.2876

■ 122.6400, -7.2175,
28.3797

■ 0.0000, 0.0000,
0.0000

■ 148.8250, -7.8017,
29.0945

■ 175.4230, -8.0965,
30.3240

■ 203.0210, -8.3914,
31.5536

■ 227.4330, -6.6225,

24.1763

247.6480, -2.7845,
6.4477

50.3620, -5.6015,
23.3615

50.3620, -5.6015,
23.3615

44.7540, -6.7807,
28.2797

55.9700, -4.4222,
18.4433

39.8470, -7.8126,
32.5832

60.8770, -3.3904,
14.1399

34.2390, -8.9918,
37.5014

66.4850, -2.2111,
9.2217

28.6310, -10.1711,
42.4196

72.0930, -1.0318,
4.3034

23.7240, -11.2029,
46.7231

77.7010, 0.1474,
-0.6148

■ 23.0230, -11.3503,
47.3378

■ 82.6080, 1.1793,
-4.9182

■ 88.2160, 2.3585,
-9.8364

■ 93.8240, 3.5378,
-14.7546

■ 98.7310, 4.5696,
-19.0581

Harmonies

Analogous

The Analogous color harmony consists of three colors that are next to each other on the color wheel.



50.7730, 1.0979, 21.2471



50.3620, -5.6015, 23.3615



49.8470, -11.2636, 19.4282

Triad

The Triadic color harmony groups three colors that are evenly spaced from another and form a triangle on the color wheel.



50.3620, -5.6015, 23.3615



45.6040, -6.2138, -13.6847



45.3960, 16.0738, -22.2723

Complementary

The Complementary color scheme is a pair of colors which are on the opposite of each other on the color wheel.



50.3620, -5.6015, 23.3615



65.6380, 5.6015, -23.3615

Split Complementary

Split-complementary colors differ from the complementary color scheme. The scheme consists of three colors, the original color and two neighbors of the complement color.



41.1940, 15.6804, -36.1271



50.3620, -5.6015, 23.3615



40.4970, 2.7130, -30.2539

Square

The Square scheme is like the rectangle color scheme, but the four colors are evenly spaced on the color wheel.



50.3620, -5.6015, 23.3615



47.7860, -12.2195, -0.6893



40.4130, 10.1494, -35.4422



50.3060, 12.6671, -2.8994

Rectangle

The Rectangle color scheme consists of four colors that form a rectangle on the color wheel.



50.3620, -5.6015, 23.3615



48.9450, -13.2839, 14.0802



40.4130, 10.1494, -35.4422



42.2700, 17.1219, -31.8088

Sweetspot

The Sweet Spot groups the original color and five complimentary colors.



50.3620, -5.6015, 23.3615



89.1860, -2.0637, 8.6069



54.6940, 10.9969, 19.5624



44.6910, -1.3267, 5.5330



179.0000, 0.0000, 0.0000



51.0000, 0.0000, 0.0000

Same Dimension

The Same Dimension uses a secret algorithm to generate beautiful new colors.



50.3620, -5.6015, 23.3615



58.3420, -8.5496, 35.6571



61.5150, -11.0999, 13.5803



35.1960, -0.5896, 2.4591



30.4980, -15.0355, 62.7073



68.7700, -33.9036, 141.3987

Inverse Universe

The Inverse Universe completely reimagines the original color for something new.



65.6380, 5.6015, -23.3615



81.6580, 8.5496, -35.6571



54.4850, 11.0999, -13.5803



36.8040, 0.5896, -2.4591



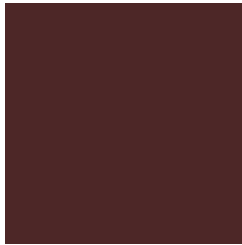
71.5020, 15.0355, -62.7073



161.2300, 33.9036, -141.3987

Previews

White Background



This preview shows how the YUV color 50.3620, -5.6015, 23.3615 looks on a white background.

Color Contrast Check

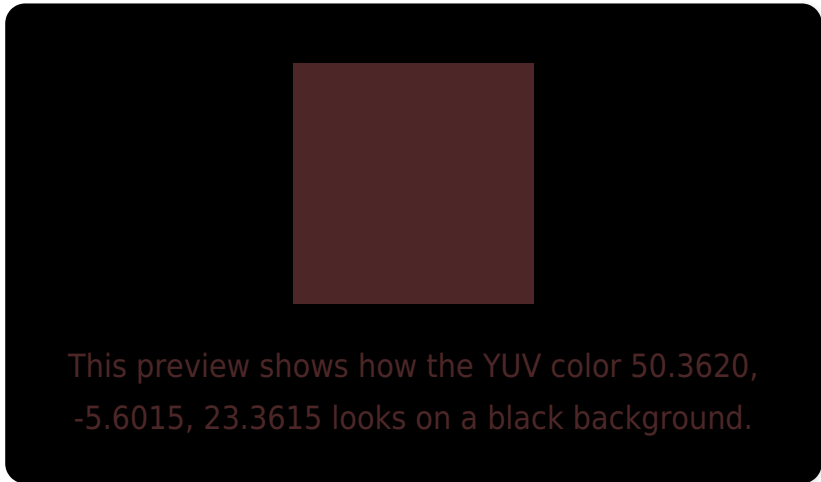
Large Text (above 18pt) WCAG AA ✓ Pass

Any Text WCAG AA ✓ Pass

Large Text (above 18pt) WCAG AAA ✓ Pass

Any Text WCAG AAA ✓ Pass

Black Background



Color Contrast Check

Large Text (above 18pt) WCAG AA × Fail

Any Text WCAG AA × Fail

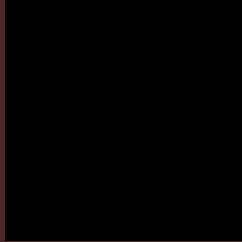
Large Text (above 18pt) WCAG AAA × Fail

Any Text WCAG AAA × Fail

If you want to check with other color combinations, try the [Color Contrast Checker](#).

YUV 50.3620, -5.6015, 23.3615

Background



This preview shows how black text looks on a background with the YUV color 50.3620, -5.6015, 23.3615.



This preview shows how white text looks on a background with the YUV color 50.3620, -5.6015,

Color Blindness Simulation

Color vision deficiency is a very complex topic, and I could not describe the different causes any better than Wikipedia does, so if you want to learn more, you should check out their [article about color blindness](#).

Dichromacy



Original Color

50.3620, -5.6015, 23.3615

Protanopia

50.2130, -3.0630, 2.4442

Deuteranopia

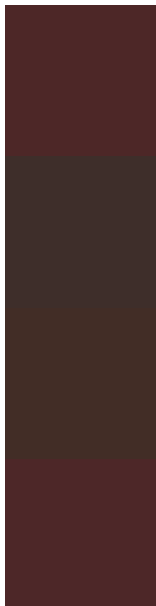
50.3340, -6.5737, 8.4771



Tritanopia

50.5900, -4.7279, 23.1616

Trichromacy



Original Color

50.3620, -5.6015, 23.3615

Protanomaly

50.3280, -4.1057, 10.2363

Deuteranomaly

50.4810, -6.1531, 13.6102

Tritanomaly

50.4760, -5.1647, 23.2615

Monochromacy



Original Color

50.3620, -5.6015, 23.3615

Achromatopsia

50.0000, 0.0000, 0.0000

Achromatomaly

50.1860, -2.0637, 8.6069

CSS Examples

Text

The CSS property to change the color of the text to YUV 50.3620, -5.6015, 23.3615 is called "color". The color property can be set on classes, ids or directly on the HTML element.

This example shows how text in the color `rgb(77, 39, 39)` looks like.

```
.text, #text, p{  
    color:rgb(77, 39, 39)  
}
```

If you want to add a text shadow in that color use the text-shadow property, you can generate a text shadow directly with our [CSS Text Shadow Generator](#).

Here you see how black text with a 4 pixel rgb(77, 39, 39) colored shadow looks like.

```
.shadow{ text-shadow: 4px 4px 2px rgb(77, 39, 39) }
```

Border

The CSS property to change the border of an element to YUV 50.3620, -5.6015, 23.3615 is called "border". The border property can be set on classes, ids or directly on the HTML element.

This example shows the color as border, it can be applied via the CSS property "border" or "border-color".

```
.border, #border, table{ border:4px solid rgb(77, 39, 39) }
```


If only the border color should be changed use the property border-color.

```
.border{ border-color:rgb(77, 39, 39) }
```

If you want to add a box shadow in that color use:

Here you see how a box with a 4 pixel rgb(77, 39, 39) colored shadow looks like.

```
.boxshadow{ -moz-box-shadow:4px 4px 4px  
4px rgb(77, 39, 39); -webkit-box-  
shadow:4px 4px 4px 4px rgb(77, 39, 39);  
box-shadow:4px 4px 4px 4px rgb(77, 39, 39)  
}
```

Background

The CSS property to change the background color of an element to YUV 50.3620, -5.6015, 23.3615 is called "background". The background property can be set on classes, ids or directly on the HTML element.

```
.background, #background, body{  
background: rgb(77, 39, 39) }
```

If only the background color should be changed can be used:

```
.background{ background-color: rgb(77, 39,  
39) }
```

This example shows the color as background, it is applied via the CSS property "background".

To optimize and compress your CSS code, you can use our [online CSS compressor and optimizer](#) based on csstidy. If you want to create a linear or radial gradient as background or border, check our [CSS Gradient Generator](#).

Hey! You found this booklet interesting? Support Converting Colors with the new Membership Option!

The pro membership hides all ads, plus gives you double the colors in the color bucket, and more awesome pro features!

[Learn more, Memberships starting at \\$2.50/m!](#)

**Follow me
on Twitter!**

@ConvertingColor