

Converting Colors

YUV(50.4160, -7.6001, 11.0362)

Have a look what the booklet for
YUV(50.4160, -7.6001, 11.0362)
contains.

YUV(50.4160, -7.6001, 11.0362)	3
<i>Conversions</i>	4
<i>Details</i>	6
<i>Harmonies</i>	12
<i>Previews</i>	24
<i>Color Blindness Simulation</i>	28
<i>CSS Examples</i>	31

Color

**YUV(50.4160, -7.6001,
11.0362)**

Conversions

Conversions Part 1

Format	Color
Hex	3F2F23
RGB	63, 47, 35
RGB Percent	25%, 18%, 14%
CMY	0.7529, 0.8157, 0.8627
CMYK	0.00, 0.25, 0.44, 0.75
HSL	26°, 29%, 19%
HSV	26°, 44%, 25%
XYZ	3.3698, 3.2111, 2.0323
YIQ	50.4160, 13.3880, -0.3400

Conversions

Conversions Part 2

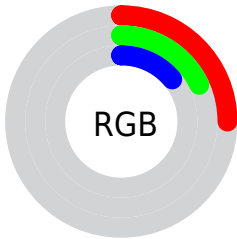
Format	Color
RYB	63, 56, 35
Decimal	4140835
CIELab	20.87, 5.33, 10.52
CIELCh	21, 11.792, 63.110
Yxy	3.2111, 0.3912, 0.3728
Android (android.graphics.Color)	4282330915 (0xFF3F2F23)
YUV	50.4160, -7.6001, 11.0362
Hunter-Lab	17.9197, 2.2075, 5.8195

Details

The YUV color **50.4160, -7.6001, 11.0362** is a dark color, and the websafe version is hex **333333**. A complement of this color would be **47.5840, 7.6001, -11.0362**, and the grayscale version is **50.0000, 0.0000, 0.0000**.

A 20% lighter version of the original color is **97.0850, -8.9159, 13.0805**, and **5.0830, -2.5059, 10.4512** is the 20% darker color. If you saturate the color by 10%, you get **47.3840, -9.0633, 13.6952**, and if you desaturate by 10%, it is **53.4480, -6.1369, 8.3771**.

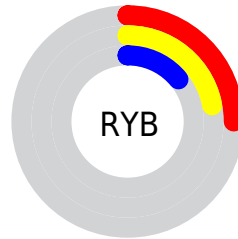
Distribution



Red (25%)

Green (18%)

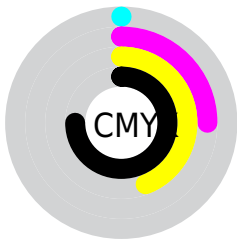
Blue (14%)



Red (25%)

Yellow (22%)

Blue (14%)

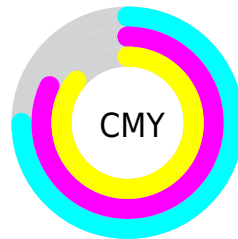


Cyan (0%)

Magenta (25%)

Yellow (44%)

Black (75%)



Cyan (75%)

Magenta (82%)

Yellow (86%)

Brightness & Saturation Gradients

These gradients show how the YUV color 50.4160, -7.6001, 11.0362 changes by changing the brightness by 10 percent. The first figure shows a shift by +10% for each color and the second figure -10%.

Similar to the brightness gradients but the following saturation gradients show a change of the YUV color 50.4160, -7.6001, 11.0362 by changing the saturation by 10% instead.

■ 50.4160, -7.6001,
11.0362

■ 50.4160, -7.6001,
11.0362

■ 255.0000, 0.0000,
0.0000

■ 29.1170, -7.4527,
10.4214

■ 97.0850, -8.9159,
13.0805

■ 5.0830, -2.5059,
10.4512

■ 121.4980, -8.6265,
13.5953

■ 0.0000, 0.0000,
0.0000

■ 147.6830, -9.2107,
14.3100

■ 174.5690, -9.6475,
14.4100

■ 201.7540,
-10.2317, 15.1247

■ 230.0530,

-10.3791, 15.7395

■ 251.7740, -7.2836,
2.8292

■ 50.4160, -7.6001,
11.0362

■ 50.4160, -7.6001,
11.0362

■ 47.3840, -9.0633,
13.6952

■ 53.4480, -6.1369,
8.3771

■ 44.8250, -11.2527,
15.9395

■ 56.0070, -3.9475,
6.1329

■ 41.7930, -12.7159,
18.5985

■ 59.0390, -2.4842,
3.4738

■ 39.3480, -14.4686,
20.7428

■ 61.4840, -0.7316,
1.3295

■ 36.3160, -15.9318,
23.4019

■ 64.6300, 1.1684,
-1.4295

■ 34.6860, -17.1002,
24.8314

■ 67.6620, 2.6316,
-4.0886

■ 70.1070, 4.3842,
-6.2328

■ 73.1390, 5.8475,
-8.8919

■ 75.6980, 8.0369,
-11.1361

Harmonies

Analogous

The Analogous color harmony consists of three colors that are next to each other on the color wheel.



51.1220, -4.9901, 13.9250



50.4160, -7.6001, 11.0362



49.8560, -8.3100, 5.3883

Triad

The Triadic color harmony groups three colors that are evenly spaced from another and form a triangle on the color wheel.



50.4160, -7.6001, 11.0362



46.1720, 2.3802, -16.8138



51.4330, 6.6885, 1.3743

Complementary

The Complementary color scheme is a pair of colors which are on the opposite of each other on the color wheel.



50.4160, -7.6001, 11.0362



47.5840, 7.6001, -11.0362

Split Complementary

Split-complementary colors differ from the complementary color scheme. The scheme consists of three colors, the original color and two neighbors of the complement color.



49.8340, 8.4628, -7.7474



50.4160, -7.6001, 11.0362



46.1870, 6.3168, -19.4580

Square

The Square scheme is like the rectangle color scheme, but the four colors are evenly spaced on the color wheel.



50.4160, -7.6001, 11.0362



47.2500, -2.5882, -9.8663



47.1920, 8.7793, -15.9544



51.5650, 3.1725, 9.1515

Rectangle

The Rectangle color scheme consists of four colors that form a rectangle on the color wheel.



50.4160, -7.6001, 11.0362



49.0510, -7.4201, -0.0447



47.1920, 8.7793, -15.9544



50.9380, 7.4256, -1.6996

Sweetspot

The Sweet Spot groups the original color and five complimentary colors.



50.4160, -7.6001, 11.0362



77.2240, -3.0684, 4.1886



45.1960, 2.8614, 15.6141



37.8540, -1.9000, 2.7590



168.0000, 0.0000, 0.0000



41.0000, 0.0000, 0.0000

Same Dimension

The Same Dimension uses a secret algorithm to generate beautiful new colors.



50.4160, -7.6001, 11.0362



62.3090, -11.9843, 17.2690



58.6340, -11.6516, 3.8290



29.4840, -0.7316, 1.3295



51.5860, -25.4319, 37.1971



122.1430, -60.2165, 87.5746

Inverse Universe

The Inverse Universe completely reimagines the original color for something new.



47.5840, 7.6001, -11.0362



57.6910, 11.9843, -17.2690



39.3660, 11.6516, -3.8290



28.9290, 1.0210, -0.8147



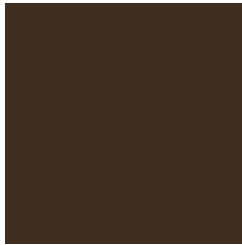
42.4140, 25.4319, -37.1971



99.8570, 60.2165, -87.5746

Previews

White Background



This preview shows how the YUV color 50.4160, -7.6001, 11.0362 looks on a white background.

Color Contrast Check

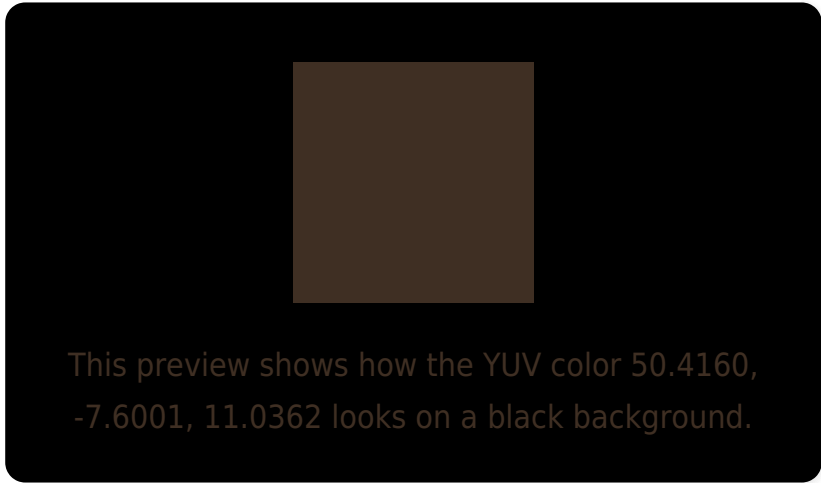
Large Text (above 18pt) WCAG AA ✓ Pass

Any Text WCAG AA ✓ Pass

Large Text (above 18pt) WCAG AAA ✓ Pass

Any Text WCAG AAA ✓ Pass

Black Background



Color Contrast Check

Large Text (above 18pt) WCAG AA × Fail

Any Text WCAG AA × Fail

Large Text (above 18pt) WCAG AAA × Fail

Any Text WCAG AAA × Fail

If you want to check with other color combinations, try the [Color Contrast Checker](#).

YUV 50.4160, -7.6001, 11.0362

Background



This preview shows how black text looks on a background with the YUV color 50.4160, -7.6001, 11.0362.

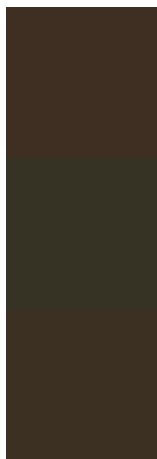


This preview shows how white text looks on a background with the YUV color 50.4160, -7.6001,

Color Blindness Simulation

Color vision deficiency is a very complex topic, and I could not describe the different causes any better than Wikipedia does, so if you want to learn more, you should check out their [article about color blindness](#).

Dichromacy



Original Color

50.4160, -7.6001, 11.0362

Protanopia

49.6000, -6.7048, 3.8588

Deuteranopia

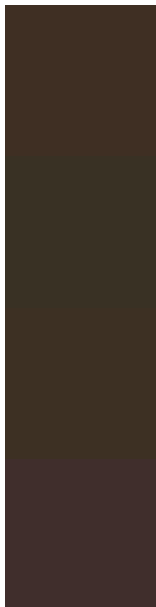
50.1060, -7.4473, 8.6770



Tritanopia

51.1370, -1.0535, 11.2809

Trichromacy



Original Color

50.4160, -7.6001, 11.0362

Protanomaly

49.9100, -6.8576, 6.2179

Deuteranomaly

50.4050, -7.5947, 9.2918

Tritanomaly

51.1540, -3.5269, 11.2659

Monochromacy



Original Color

50.4160, -7.6001, 11.0362

Achromatopsia

50.0000, 0.0000, 0.0000

Achromatomaly

50.3380, -2.6316, 4.0886

CSS Examples

Text

The CSS property to change the color of the text to YUV 50.4160, -7.6001, 11.0362 is called "color". The color property can be set on classes, ids or directly on the HTML element.

This example shows how text in the color `rgb(63, 47, 35)` looks like.

```
.text, #text, p{  
    color:rgb(63, 47, 35)  
}
```

If you want to add a text shadow in that color use the text-shadow property, you can generate a text shadow directly with our [CSS Text Shadow Generator](#).

Here you see how black text with a 4 pixel rgb(63, 47, 35) colored shadow looks like.

```
.shadow{ text-shadow: 4px 4px 2px rgb(63, 47, 35) }
```

Border

The CSS property to change the border of an element to YUV 50.4160, -7.6001, 11.0362 is called "border". The border property can be set on classes, ids or directly on the HTML element.

This example shows the color as border, it can be applied via the CSS property "border" or "border-color".

```
.border, #border, table{ border:4px solid rgb(63, 47, 35) }
```


If only the border color should be changed use the property `border-color`.

```
.border{ border-color:rgb(63, 47, 35) }
```

If you want to add a box shadow in that color use:

Here you see how a box with a 4 pixel `rgb(63, 47, 35)` colored shadow looks like.

```
.boxshadow{ -moz-box-shadow:4px 4px 4px  
4px rgb(63, 47, 35); -webkit-box-  
shadow:4px 4px 4px 4px rgb(63, 47, 35);  
box-shadow:4px 4px 4px 4px rgb(63, 47, 35)  
}
```

Background

The CSS property to change the background color of an element to YUV 50.4160, -7.6001, 11.0362 is called "background". The background property can be set on classes, ids or directly on the HTML element.

```
.background, #background, body{  
background: rgb(63, 47, 35) }
```

If only the background color should be changed can be used:

```
.background{ background-color: rgb(63, 47,  
35) }
```

This example shows the color as background, it is applied via the CSS property "background".

To optimize and compress your CSS code, you can use our [online CSS compressor and optimizer](#) based on csstidy. If you want to create a linear or radial gradient as background or border, check our [CSS Gradient Generator](#).

Hey! You found this booklet interesting? Support Converting Colors with the new Membership Option!

The pro membership hides all ads, plus gives you double the colors in the color bucket, and more awesome pro features!

[Learn more, Memberships starting at \\$2.50/m!](#)

**Follow me
on Twitter!**

@ConvertingColor