

Converting Colors

YUV(50.6610, -5.7489, 23.9763)

Have a look what the booklet for
YUV(50.6610, -5.7489, 23.9763)
contains.

YUV(50.6610, -5.7489, 23.9763)	3
<i>Conversions</i>	4
<i>Details</i>	6
<i>Harmonies</i>	12
<i>Previews</i>	24
<i>Color Blindness Simulation</i>	28
<i>CSS Examples</i>	31

Color

**YUV(50.6610, -5.7489,
23.9763)**

Conversions

Conversions Part 1

Format	Color
Hex	4E2727
RGB	78, 39, 39
RGB Percent	31%, 15%, 15%
CMY	0.6941, 0.8471, 0.8471
CMYK	0.00, 0.50, 0.50, 0.69
HSL	0°, 33%, 23%
HSV	0°, 50%, 31%
XYZ	4.2336, 3.2172, 2.3173
YIQ	50.6610, 23.2440, 8.2680

Conversions

Conversions Part 2

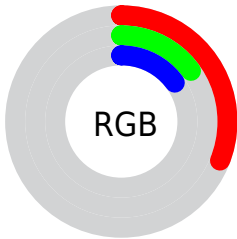
Format	Color
R_{YB}	78, 39, 39
Decimal	5121831
CIE _{Lab}	20.89, 18.22, 8.18
CIE _{LCh}	21, 19.970, 24.196
Yxy	3.2172, 0.4334, 0.3294
Android (android.graphics.Color)	4283311911 (0xFF4E2727)
YUV	50.6610, -5.7489, 23.9763
Hunter-Lab	17.9366, 10.7426, 4.8957

Details

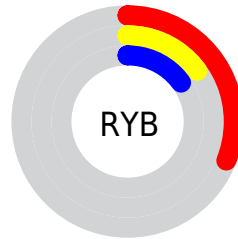
The YUV color **50.6610, -5.7489, 23.9763** is a dark color, and the websafe version is hex **663333**. A complement of this color would be **66.3390, 5.7489, -23.9763**, and the grayscale version is **51.0000, 0.0000, 0.0000**.

A 20% lighter version of the original color is **98.0420, -6.9227, 27.1502**, and **10.1660, -5.0118, 20.9024** is the 20% darker color. If you saturate the color by 10%, you get **45.0530, -6.9281, 28.8945**, and if you desaturate by 10%, it is **56.2690, -4.5696, 19.0581**.

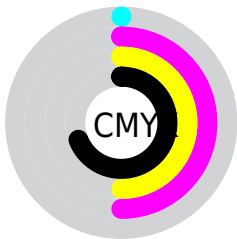
Distribution



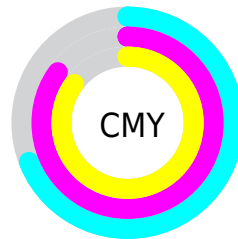
- Red (31%)
- Green (15%)
- Blue (15%)



- Red (31%)
- Yellow (15%)
- Blue (15%)



- Cyan (0%)
- Magenta (50%)
- Yellow (50%)
- Black (69%)



- Cyan (69%)
- Magenta (85%)
- Yellow (85%)

Brightness & Saturation Gradients

These gradients show how the YUV color 50.6610, -5.7489, 23.9763 changes by changing the brightness by 10 percent. The first figure shows a shift by +10% for each color and the second figure -10%.

Similar to the brightness gradients but the following saturation gradients show a change of the YUV color 50.6610, -5.7489, 23.9763 by changing the saturation by 10% instead.

■ 50.6610, -5.7489,
23.9763

■ 50.6610, -5.7489,
23.9763

■ 255.0000, 0.0000,
0.0000

■ 28.8780, -4.8699,
22.0320

■ 98.0420, -6.9227,
27.1502

■ 10.1660, -5.0118,
20.9024

■ 123.5260, -7.6543,
28.4797

■ 0.0000, 0.0000,
0.0000

■ 149.1240, -7.9491,
29.7093

■ 175.7220, -8.2439,
30.9388

■ 203.3200, -8.5388,
32.1684

■ 227.4330, -6.6225,

24.1763

247.6480, -2.7845,
6.4477

50.6610, -5.7489,
23.9763

50.6610, -5.7489,
23.9763

45.0530, -6.9281,
28.8945

56.2690, -4.5696,
19.0581

39.4450, -8.1074,
33.8127

61.8770, -3.3904,
14.1399

34.5380, -9.1392,
38.1162

66.7840, -2.3585,
9.8364

28.9300, -10.3185,
43.0344

72.3920, -1.1793,
4.9182

23.3220, -11.4977,
47.9526

78.0000, 0.0000,
0.0000

■ 83.6080, 1.1793,
-4.9182

■ 89.2160, 2.3585,
-9.8364

■ 94.1230, 3.3904,
-14.1399

■ 99.7310, 4.5696,
-19.0581

Harmonies

Analogous

The Analogous color harmony consists of three colors that are next to each other on the color wheel.



51.1860, 1.3873, 21.7619



50.6610, -5.7489, 23.9763



50.1460, -11.4110, 20.0430

Triad

The Triadic color harmony groups three colors that are evenly spaced from another and form a triangle on the color wheel.



50.6610, -5.7489, 23.9763



45.4900, -6.6506, -13.5847



45.7980, 16.3686, -23.5018

Complementary

The Complementary color scheme is a pair of colors which are on the opposite of each other on the color wheel.



50.6610, -5.7489, 23.9763



66.3390, 5.7489, -23.9763

Split Complementary

Split-complementary colors differ from the complementary color scheme. The scheme consists of three colors, the original color and two neighbors of the complement color.



41.3080, 16.1172, -36.2271



50.6610, -5.7489, 23.9763



40.6000, 3.1552, -32.0982

Square

The Square scheme is like the rectangle color scheme, but the four colors are evenly spaced on the color wheel.



50.6610, -5.7489, 23.9763



47.7860, -12.2195, -0.6893



41.1140, 10.2968, -36.0570



51.0070, 12.8145, -3.5141

Rectangle

The Rectangle color scheme consists of four colors that form a rectangle on the color wheel.



50.6610, -5.7489, 23.9763



49.8310, -13.7207, 14.1802



41.1140, 10.2968, -36.0570



41.7860, 17.8535, -33.1383

Sweetspot

The Sweet Spot groups the original color and five complimentary colors.



50.6610, -5.7489, 23.9763



91.4850, -2.2111, 9.2217



55.1070, 11.2862, 20.0772



44.6910, -1.3267, 5.5330



179.0000, 0.0000, 0.0000



51.0000, 0.0000, 0.0000

Same Dimension

The Same Dimension uses a secret algorithm to generate beautiful new colors.



50.6610, -5.7489, 23.9763



59.2390, -8.9918, 37.5014



62.4010, -11.5367, 13.6803



35.1960, -0.5896, 2.4591



30.4980, -15.0355, 62.7073



68.7700, -33.9036, 141.3987

Inverse Universe

The Inverse Universe completely reimagines the original color for something new.



66.3390, 5.7489, -23.9763



83.7610, 8.9918, -37.5014



55.1860, 11.2473, -14.1951



36.8040, 0.5896, -2.4591



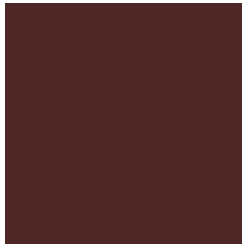
71.5020, 15.0355, -62.7073



161.2300, 33.9036, -141.3987

Previews

White Background



This preview shows how the YUV color 50.6610, -5.7489, 23.9763 looks on a white background.

Color Contrast Check

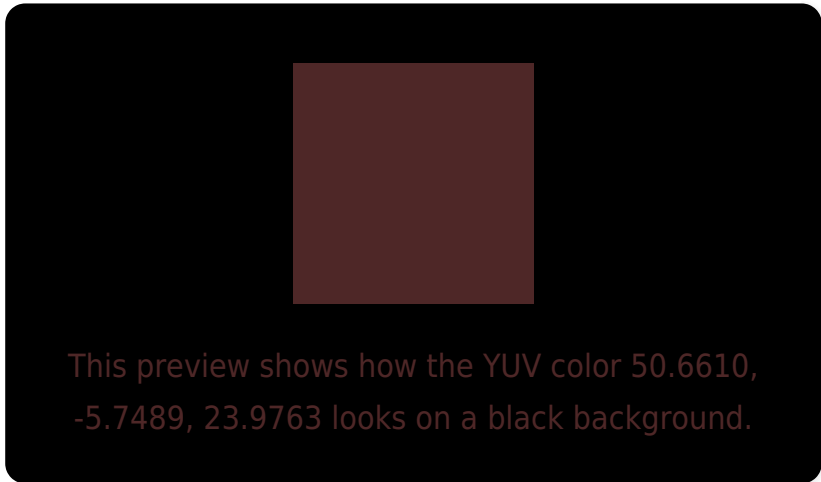
Large Text (above 18pt) WCAG AA ✓ Pass

Any Text WCAG AA ✓ Pass

Large Text (above 18pt) WCAG AAA ✓ Pass

Any Text WCAG AAA ✓ Pass

Black Background



Color Contrast Check

Large Text (above 18pt) WCAG AA × Fail

Any Text WCAG AA × Fail

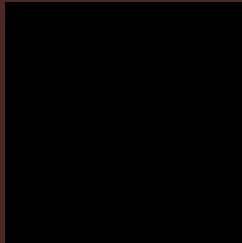
Large Text (above 18pt) WCAG AAA × Fail

Any Text WCAG AAA × Fail

If you want to check with other color combinations, try the [Color Contrast Checker](#).

YUV 50.6610, -5.7489, 23.9763

Background



This preview shows how black text looks on a background with the YUV color 50.6610, -5.7489, 23.9763.



This preview shows how white text looks on a background with the YUV color 50.6610, -5.7489,

Color Blindness Simulation

Color vision deficiency is a very complex topic, and I could not describe the different causes any better than Wikipedia does, so if you want to learn more, you should check out their [article about color blindness](#).

Dichromacy



Original Color

50.6610, -5.7489, 23.9763

Protanopia

50.9140, -2.9156, 1.8294

Deuteranopia

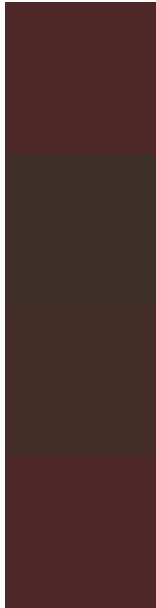
50.9210, -6.8631, 7.9623



Tritanopia

50.8890, -4.8753, 23.7763

Trichromacy



Original Color

50.6610, -5.7489, 23.9763

Protanomaly

51.0290, -3.9583, 9.6216

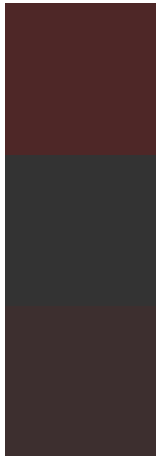
Deuteranomaly

50.7800, -6.3005, 14.2249

Tritanomaly

50.7750, -5.3121, 23.8763

Monochromacy



Original Color

50.6610, -5.7489, 23.9763

Achromatopsia

51.0000, 0.0000, 0.0000

Achromatomaly

51.1860, -2.0637, 8.6069

CSS Examples

Text

The CSS property to change the color of the text to YUV 50.6610, -5.7489, 23.9763 is called "color". The color property can be set on classes, ids or directly on the HTML element.

This example shows how text in the color `rgb(78, 39, 39)` looks like.

```
.text, #text, p{  
    color:rgb(78, 39, 39)  
}
```

If you want to add a text shadow in that color use the text-shadow property, you can generate a text shadow directly with our [CSS Text Shadow Generator](#).

Here you see how black text with a 4 pixel rgb(78, 39, 39) colored shadow looks like.

```
.shadow{ text-shadow: 4px 4px 2px rgb(78, 39, 39) }
```

Border

The CSS property to change the border of an element to YUV 50.6610, -5.7489, 23.9763 is called "border". The border property can be set on classes, ids or directly on the HTML element.

This example shows the color as border, it can be applied via the CSS property "border" or "border-color".

```
.border, #border, table{ border:4px solid rgb(78, 39, 39) }
```


If only the border color should be changed use the property `border-color`.

```
.border{ border-color:rgb(78, 39, 39) }
```

If you want to add a box shadow in that color use:

Here you see how a box with a 4 pixel `rgb(78, 39, 39)` colored shadow looks like.

```
.boxshadow{ -moz-box-shadow:4px 4px 4px  
4px rgb(78, 39, 39); -webkit-box-  
shadow:4px 4px 4px 4px rgb(78, 39, 39);  
box-shadow:4px 4px 4px 4px rgb(78, 39, 39)  
}
```

Background

The CSS property to change the background color of an element to YUV 50.6610, -5.7489, 23.9763 is called "background". The background property can be set on classes, ids or directly on the HTML element.

```
.background, #background, body{  
background: rgb(78, 39, 39) }
```

If only the background color should be changed can be used:

```
.background{ background-color: rgb(78, 39,  
39) }
```

This example shows the color as background, it is applied via the CSS property "background".

To optimize and compress your CSS code, you can use our [online CSS compressor and optimizer](#) based on csstidy. If you want to create a linear or radial gradient as background or border, check our [CSS Gradient Generator](#).

Hey! You found this booklet interesting? Support Converting Colors with the new Membership Option!

The pro membership hides all ads, plus gives you double the colors in the color bucket, and more awesome pro features!

[Learn more, Memberships starting at \\$2.50/m!](#)

**Follow me
on Twitter!**

@ConvertingColor