

Converting Colors

YUV(51.5070, -2.2220, 12.7104)

Have a look what the booklet for
YUV(51.5070, -2.2220, 12.7104)
contains.

YUV(51.5070, -2.2220, 12.7104)	3
<i>Conversions</i>	4
<i>Details</i>	6
<i>Harmonies</i>	12
<i>Previews</i>	24
<i>Color Blindness Simulation</i>	28
<i>CSS Examples</i>	31

Color

**YUV(51.5070, -2.2220,
12.7104)**

Conversions

Conversions Part 1

Format	Color
Hex	422D2F
RGB	66, 45, 47
RGB Percent	26%, 18%, 18%
CMY	0.7412, 0.8235, 0.8157
CMYK	0.00, 0.32, 0.29, 0.74
HSL	354°, 19%, 22%
HSV	354°, 32%, 26%
XYZ	3.6982, 3.2403, 3.1198
YIQ	51.5070, 11.8740, 5.0740

Conversions

Conversions Part 2

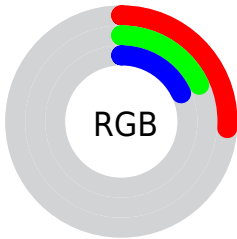
Format	Color
R_{YB}	66, 45, 47
Decimal	4336943
CIE Lab	20.98, 10.03, 2.56
CIE LCh	21, 10.348, 14.328
Yxy	3.2403, 0.3677, 0.3221
Android (android.graphics.Color)	4282527023 (0xFF422D2F)
YUV	51.5070, -2.2220, 12.7104
Hunter-Lab	18.0007, 5.1715, 2.3245

Details

The YUV color **51.5070, -2.2220, 12.7104** is a dark color, and the websafe version is hex **333333**. A complement of this color would be **59.4930, 2.2220, -12.7104**, and the grayscale version is **52.0000, 0.0000, 0.0000**.

A 20% lighter version of the original color is **98.4040, -2.6642, 14.5547**, and **7.4750, -3.6852, 15.3694** is the 20% darker color. If you saturate the color by 10%, you get **46.7140, -2.8170, 16.9138**, and if you desaturate by 10%, it is **56.3000, -1.6269, 8.5069**.

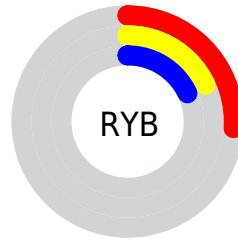
Distribution



Red (26%)

Green (18%)

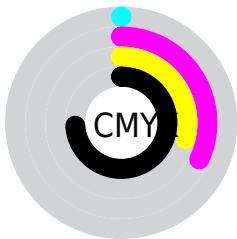
Blue (18%)



Red (26%)

Yellow (18%)

Blue (18%)

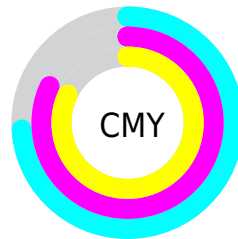


Cyan (0%)

Magenta (32%)

Yellow (29%)

Black (74%)



Cyan (74%)

Magenta (82%)

Yellow (82%)

Brightness & Saturation Gradients

These gradients show how the YUV color 51.5070, -2.2220, 12.7104 changes by changing the brightness by 10 percent. The first figure shows a shift by +10% for each color and the second figure -10%.

Similar to the brightness gradients but the following saturation gradients show a change of the YUV color 51.5070, -2.2220, 12.7104 by changing the saturation by 10% instead.

■ 51.5070, -2.2220,
12.7104

■ 51.5070, -2.2220,
12.7104

■ 255.0000, 0.0000,
0.0000

■ 29.9090, -1.9271,
11.4808

■ 98.4040, -2.6642,
14.5547

■ 7.4750, -3.6852,
15.3694

■ 122.7030, -2.8116,
15.1695

■ 0.0000, 0.0000,
0.0000

■ 149.0020, -2.9590,
15.7842

■ 175.3010, -3.1064,
16.3990

■ 203.3010, -3.1064,
16.3990

■ 231.6000, -3.2538,

17.0138

252.4240, 0.2840,
2.2592

51.5070, -2.2220,
12.7104

51.5070, -2.2220,
12.7104

46.7140, -2.8170,
16.9138

56.3000, -1.6269,
8.5069

42.5080, -3.7014,
20.6025

60.5060, -0.7425,
4.8182

37.7150, -4.2965,
24.8059

65.2990, -0.1474,
0.6148

33.5090, -5.1809,
28.4946

69.5050, 0.7370,
-3.0739

28.7160, -5.7760,
32.6981

74.2980, 1.3321,
-7.2773

■ 23.9230, -6.3710,
36.9015

■ 79.0910, 1.9271,
-11.4808

■ 20.4180, -7.1081,
39.9754

■ 83.2970, 2.8116,
-15.1695

■ 88.0900, 3.4066,
-19.3729

■ 92.2960, 4.2911,
-23.0616

Harmonies

Analogous

The Analogous color harmony consists of three colors that are next to each other on the color wheel.



51.5220, 1.7147, 10.0662



51.5070, -2.2220, 12.7104



50.9970, -5.4215, 12.2806

Triad

The Triadic color harmony groups three colors that are evenly spaced from another and form a triangle on the color wheel.



51.5070, -2.2220, 12.7104



48.7130, -4.7885, -4.1333



48.6980, 8.0369, -11.1361

Complementary

The Complementary color scheme is a pair of colors which are on the opposite of each other on the color wheel.



51.5070, -2.2220, 12.7104



59.4930, 2.2220, -12.7104

Split Complementary

Split-complementary colors differ from the complementary color scheme. The scheme consists of three colors, the original color and two neighbors of the complement color.



47.3230, 6.7428, -16.0693



51.5070, -2.2220, 12.7104



47.4070, -0.6937, -10.8809

Square

The Square scheme is like the rectangle color scheme, but the four colors are evenly spaced on the color wheel.



51.5070, -2.2220, 12.7104



49.5890, -6.6994, 2.1144



47.1120, 3.3958, -15.8842



50.5140, 7.1416, -3.9588

Rectangle

The Rectangle color scheme consists of four colors that form a rectangle on the color wheel.



51.5070, -2.2220, 12.7104



50.9320, -6.8685, 9.7066



47.1120, 3.3958, -15.8842



48.2740, 7.7529, -13.3953

Sweetspot

The Sweet Spot groups the original color and five complimentary colors.



51.5070, -2.2220, 12.7104



80.8050, -0.8899, 5.4330



53.0750, 6.3720, 9.5812



39.6090, -0.3002, 2.9739



171.0000, 0.0000, 0.0000



43.0000, 0.0000, 0.0000

Same Dimension

The Same Dimension uses a secret algorithm to generate beautiful new colors.



51.5070, -2.2220, 12.7104



64.2090, -3.5540, 19.9877



55.9750, -5.4107, 8.7919



30.8970, -0.4422, 1.8443



30.0290, -10.3673, 58.7336



69.3700, -23.8464, 135.6105

Inverse Universe

The Inverse Universe completely reimagines the original color for something new.



51.5070, -2.2220, 12.7104



64.2090, -3.5540, 19.9877



55.0250, 5.4107, -8.7919



30.8970, -0.4422, 1.8443



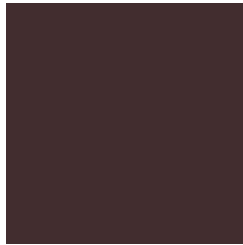
30.0290, -10.3673, 58.7336



69.3700, -23.8464, 135.6105

Previews

White Background



This preview shows how the YUV color 51.5070, -2.2220, 12.7104 looks on a white background.

Color Contrast Check

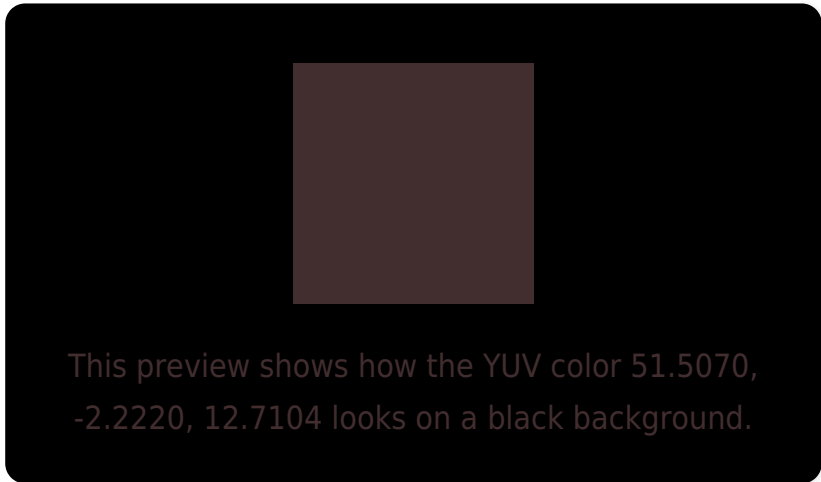
Large Text (above 18pt) WCAG AA ✓ Pass

Any Text WCAG AA ✓ Pass

Large Text (above 18pt) WCAG AAA ✓ Pass

Any Text WCAG AAA ✓ Pass

Black Background



Color Contrast Check

Large Text (above 18pt) WCAG AA × Fail

Any Text WCAG AA × Fail

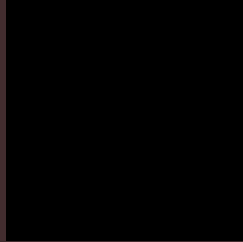
Large Text (above 18pt) WCAG AAA × Fail

Any Text WCAG AAA × Fail

If you want to check with other color combinations, try the [Color Contrast Checker](#).

YUV 51.5070, -2.2220, 12.7104

Background



This preview shows how black text looks on a background with the YUV color 51.5070, -2.2220, 12.7104.

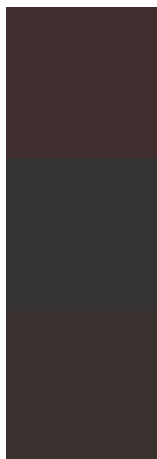


This preview shows how white text looks on a background with the YUV color 51.5070, -2.2220,

Color Blindness Simulation

Color vision deficiency is a very complex topic, and I could not describe the different causes any better than Wikipedia does, so if you want to learn more, you should check out their [article about color blindness](#).

Dichromacy



Original Color

51.5070, -2.2220, 12.7104

Protanopia

50.5980, -0.2948, 1.2296

Deuteranopia

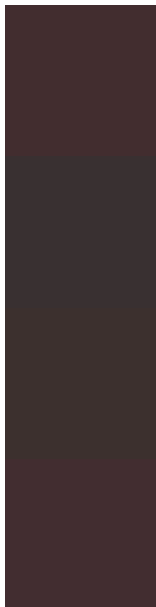
51.0500, -2.4896, 5.2182



Tritanopia

51.6210, -1.7852, 12.6104

Trichromacy



Original Color

51.5070, -2.2220, 12.7104

Protanomaly

50.8050, -0.8899, 5.4330

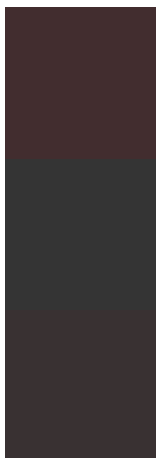
Deuteranomaly

51.3600, -2.6425, 7.5773

Tritanomaly

51.6210, -1.7852, 12.6104

Monochromacy



Original Color

51.5070, -2.2220, 12.7104

Achromatopsia

52.0000, 0.0000, 0.0000

Achromatomaly

51.5060, -0.7425, 4.8182

CSS Examples

Text

The CSS property to change the color of the text to YUV 51.5070, -2.2220, 12.7104 is called "color". The color property can be set on classes, ids or directly on the HTML element.

This example shows how text in the color `rgb(66, 45, 47)` looks like.

```
.text, #text, p{  
    color:rgb(66, 45, 47)  
}
```

If you want to add a text shadow in that color use the text-shadow property, you can generate a text shadow directly with our [CSS Text Shadow Generator](#).

Here you see how black text with a 4 pixel rgb(66, 45, 47) colored shadow looks like.

```
.shadow{ text-shadow: 4px 4px 2px rgb(66, 45, 47) }
```

Border

The CSS property to change the border of an element to YUV 51.5070, -2.2220, 12.7104 is called "border". The border property can be set on classes, ids or directly on the HTML element.

This example shows the color as border, it can be applied via the CSS property "border" or "border-color".

```
.border, #border, table{ border:4px solid rgb(66, 45, 47) }
```


If only the border color should be changed use the property `border-color`.

```
.border{ border-color:rgb(66, 45, 47) }
```

If you want to add a box shadow in that color use:

Here you see how a box with a 4 pixel `rgb(66, 45, 47)` colored shadow looks like.

```
.boxshadow{ -moz-box-shadow:4px 4px 4px  
4px rgb(66, 45, 47); -webkit-box-  
shadow:4px 4px 4px 4px rgb(66, 45, 47);  
box-shadow:4px 4px 4px 4px rgb(66, 45, 47)  
}
```

Background

The CSS property to change the background color of an element to YUV 51.5070, -2.2220, 12.7104 is called "background". The background property can be set on classes, ids or directly on the HTML element.

```
.background, #background, body{  
background: rgb(66, 45, 47) }
```

If only the background color should be changed can be used:

```
.background{ background-color: rgb(66, 45,  
47) }
```

This example shows the color as background, it is applied via the CSS property "background".

To optimize and compress your CSS code, you can use our [online CSS compressor and optimizer](#) based on csstidy. If you want to create a linear or radial gradient as background or border, check our [CSS Gradient Generator](#).

Hey! You found this booklet interesting? Support Converting Colors with the new Membership Option!

The pro membership hides all ads, plus gives you double the colors in the color bucket, and more awesome pro features!

[Learn more, Memberships starting at \\$2.50/m!](#)

**Follow me
on Twitter!**

@ConvertingColor