

Converting Colors

YUV(51.7470, -2.8333, 22.1469)

Have a look what the booklet for
YUV(51.7470, -2.8333, 22.1469)
contains.

YUV(51.7470, -2.8333, 22.1469)	3
<i>Conversions</i>	4
<i>Details</i>	6
<i>Harmonies</i>	12
<i>Previews</i>	24
<i>Color Blindness Simulation</i>	28
<i>CSS Examples</i>	31

Color

**YUV(51.7470, -2.8333,
22.1469)**

Conversions

Conversions Part 1

Format	Color
Hex	4D282E
RGB	77, 40, 46
RGB Percent	30%, 16%, 18%
CMY	0.6980, 0.8431, 0.8196
CMYK	0.00, 0.48, 0.40, 0.70
HSL	350°, 32%, 23%
HSV	350°, 48%, 30%
XYZ	4.3125, 3.2926, 2.9930
YIQ	51.7470, 20.1260, 9.7100

Conversions

Conversions Part 2

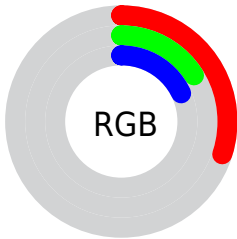
Format	Color
R_{YB}	77, 40, 46
Decimal	5056558
CIE _{Lab}	21.18, 18.08, 3.74
CIE _{LCh}	21, 18.460, 11.699
Yxy	3.2926, 0.4069, 0.3107
Android (android.graphics.Color)	4283246638 (0xFF4D282E)
YUV	51.7470, -2.8333, 22.1469
Hunter-Lab	18.1456, 10.6678, 2.9223

Details

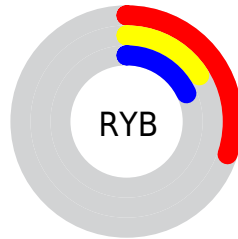
The YUV color **51.7470, -2.8333, 22.1469** is a dark color, and the websafe version is hex **663333**. A complement of this color would be **65.2530, 2.8333, -22.1469**, and the grayscale version is **52.0000, 0.0000, 0.0000**.

A 20% lighter version of the original color is **99.2420, -3.5703, 25.2208**, and **10.1660, -5.0118, 20.9024** is the 20% darker color. If you saturate the color by 10%, you get **46.3670, -3.1389, 26.8651**, and if you desaturate by 10%, it is **57.1270, -2.5276, 17.4286**.

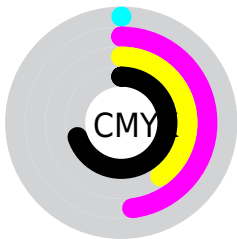
Distribution



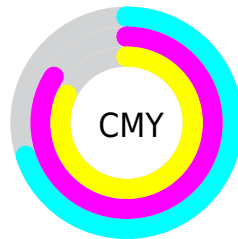
- Red (30%)
- Green (16%)
- Blue (18%)



- Red (30%)
- Yellow (16%)
- Blue (18%)



- Cyan (0%)
- Magenta (48%)
- Yellow (40%)
- Black (70%)



- Cyan (70%)
- Magenta (84%)
- Yellow (82%)

Brightness & Saturation Gradients

These gradients show how the YUV color 51.7470, -2.8333, 22.1469 changes by changing the brightness by 10 percent. The first figure shows a shift by +10% for each color and the second figure -10%.

Similar to the brightness gradients but the following saturation gradients show a change of the YUV color 51.7470, -2.8333, 22.1469 by changing the saturation by 10% instead.

■ 51.7470, -2.8333,
22.1469

■ 51.7470, -2.8333,
22.1469

■ 255.0000, 0.0000,
0.0000

■ 29.8500, -2.3911,
20.3026

■ 99.2420, -3.5703,
25.2208

■ 10.1660, -5.0118,
20.9024

■ 124.4270, -4.1545,
25.9355

■ 0.0000, 0.0000,
0.0000

■ 150.1390, -4.0125,
27.0651

■ 177.3240, -4.5967,
27.7799

■ 204.9220, -4.8915,
29.0094

■ 229.6330, -3.2701,

22.2469

249.3750, 1.2941,
4.9331

51.7470, -2.8333,
22.1469

51.7470, -2.8333,
22.1469

46.3670, -3.1389,
26.8651

57.1270, -2.5276,
17.4286

41.4600, -4.1708,
31.1686

62.0340, -1.4958,
13.1252

36.0800, -4.4764,
35.8868

67.4140, -1.1901,
8.4069

30.5860, -5.2189,
40.7051

72.9080, -0.4476,
3.5887

25.7930, -5.8139,
44.9085

77.7010, 0.1474,
-0.6148

■ 24.3910, -6.1088,
46.1381

■ 83.1950, 0.8899,
-5.4330

■ 88.5750, 1.1955,
-10.1513

■ 94.0690, 1.9380,
-14.9695

■ 98.8620, 2.5330,
-19.1730

Harmonies

Analogous

The Analogous color harmony consists of three colors that are next to each other on the color wheel.



52.4350, 3.7295, 17.1585



51.7470, -2.8333, 22.1469



51.4280, -9.0850, 20.6726

Triad

The Triadic color harmony groups three colors that are evenly spaced from another and form a triangle on the color wheel.



51.7470, -2.8333, 22.1469



47.3660, -8.5614, -7.3370



44.2380, 15.6587, -29.1497

Complementary

The Complementary color scheme is a pair of colors which are on the opposite of each other on the color wheel.



51.7470, -2.8333, 22.1469



65.2530, 2.8333, -22.1469

Split Complementary

Split-complementary colors differ from the complementary color scheme. The scheme consists of three colors, the original color and two neighbors of the complement color.



41.3250, 13.6438, -36.2420



51.7470, -2.8333, 22.1469



44.5260, -1.2453, -20.6323

Square

The Square scheme is like the rectangle color scheme, but the four colors are evenly spaced on the color wheel.



51.7470, -2.8333, 22.1469



49.4060, -12.5252, 4.0289



40.4300, 7.6760, -35.4571



49.7890, 13.4150, -9.4620

Rectangle

The Rectangle color scheme consists of four colors that form a rectangle on the color wheel.



51.7470, -2.8333, 22.1469



51.0100, -11.8369, 16.6542



40.4300, 7.6760, -35.4571



41.3080, 16.1172, -36.2271

Sweetspot

The Sweet Spot groups the original color and five complimentary colors.



51.7470, -2.8333, 22.1469



90.1150, -1.0427, 7.7921



53.4870, 11.5919, 15.3589



44.9190, -0.4531, 5.3330



179.0000, 0.0000, 0.0000



51.0000, 0.0000, 0.0000

Same Dimension

The Same Dimension uses a secret algorithm to generate beautiful new colors.



51.7470, -2.8333, 22.1469



60.0690, -4.4710, 34.1425



58.1070, -8.9268, 16.5692



35.3100, -0.1528, 2.3591



32.4360, -7.6099, 61.0076



72.9880, -17.7421, 137.6995

Inverse Universe

The Inverse Universe completely reimagines the original color for something new.



51.7470, -2.8333, 22.1469



60.0690, -4.4710, 34.1425



58.8930, 8.9268, -16.5692



35.3100, -0.1528, 2.3591



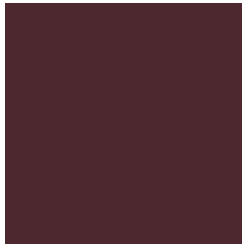
32.4360, -7.6099, 61.0076



72.9880, -17.7421, 137.6995

Previews

White Background



This preview shows how the YUV color 51.7470, -2.8333, 22.1469 looks on a white background.

Color Contrast Check

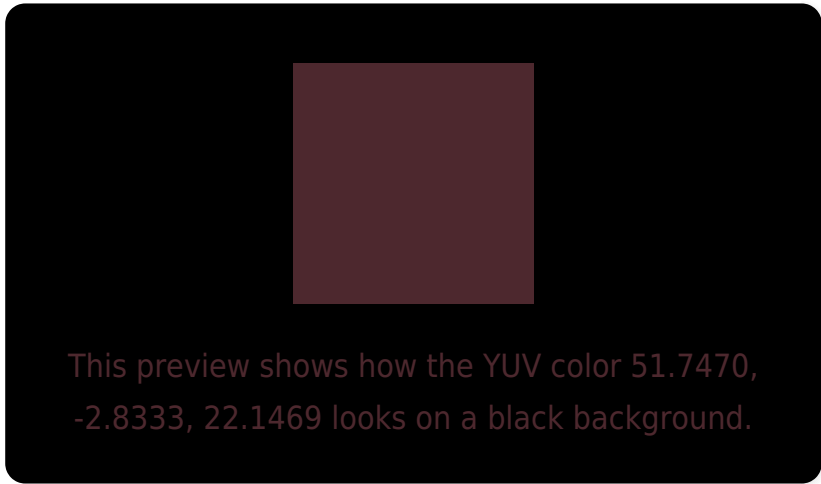
Large Text (above 18pt) WCAG AA ✓ Pass

Any Text WCAG AA ✓ Pass

Large Text (above 18pt) WCAG AAA ✓ Pass

Any Text WCAG AAA ✓ Pass

Black Background



Color Contrast Check

Large Text (above 18pt) WCAG AA × Fail

Any Text WCAG AA × Fail

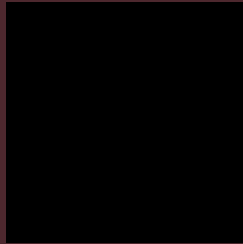
Large Text (above 18pt) WCAG AAA × Fail

Any Text WCAG AAA × Fail

If you want to check with other color combinations, try the [Color Contrast Checker](#).

YUV 51.7470, -2.8333, 22.1469

Background



This preview shows how black text looks on a background with the YUV color 51.7470, -2.8333, 22.1469.

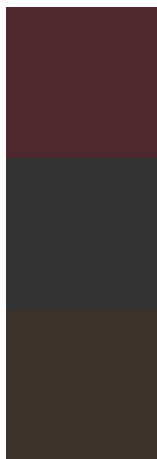


This preview shows how white text looks on a background with the YUV color 51.7470, -2.8333,

Color Blindness Simulation

Color vision deficiency is a very complex topic, and I could not describe the different causes any better than Wikipedia does, so if you want to learn more, you should check out their [article about color blindness](#).

Dichromacy



Original Color

51.7470, -2.8333, 22.1469

Protanopia

51.4130, 0.2894, 0.5148

Deuteranopia

52.0070, -3.9475, 6.1329



Tritanopia

51.4050, -4.1437, 22.4468

Trichromacy



Original Color

51.7470, -2.8333, 22.1469

Protanomaly

51.5280, -0.7533, 8.3069

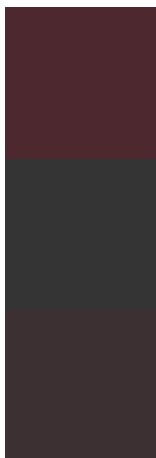
Deuteranomaly

51.8660, -3.3849, 12.3955

Tritanomaly

51.5190, -3.7069, 22.3468

Monochromacy



Original Color

51.7470, -2.8333, 22.1469

Achromatopsia

52.0000, 0.0000, 0.0000

Achromatomaly

52.1150, -1.0427, 7.7921

CSS Examples

Text

The CSS property to change the color of the text to YUV 51.7470, -2.8333, 22.1469 is called "color". The color property can be set on classes, ids or directly on the HTML element.

This example shows how text in the color `rgb(77, 40, 46)` looks like.

```
.text, #text, p{  
    color:rgb(77, 40, 46)  
}
```

If you want to add a text shadow in that color use the text-shadow property, you can generate a text shadow directly with our [CSS Text Shadow Generator](#).

Here you see how black text with a 4 pixel rgb(77, 40, 46) colored shadow looks like.

```
.shadow{ text-shadow: 4px 4px 2px rgb(77, 40, 46) }
```

Border

The CSS property to change the border of an element to YUV 51.7470, -2.8333, 22.1469 is called "border". The border property can be set on classes, ids or directly on the HTML element.

This example shows the color as border, it can be applied via the CSS property "border" or "border-color".

```
.border, #border, table{ border:4px solid rgb(77, 40, 46) }
```


If only the border color should be changed use the property `border-color`.

```
.border{ border-color:rgb(77, 40, 46) }
```

If you want to add a box shadow in that color use:

Here you see how a box with a 4 pixel `rgb(77, 40, 46)` colored shadow looks like.

```
.boxshadow{ -moz-box-shadow:4px 4px 4px  
4px rgb(77, 40, 46); -webkit-box-  
shadow:4px 4px 4px 4px rgb(77, 40, 46);  
box-shadow:4px 4px 4px 4px rgb(77, 40, 46)  
}
```

Background

The CSS property to change the background color of an element to YUV 51.7470, -2.8333, 22.1469 is called "background". The background property can be set on classes, ids or directly on the HTML element.

```
.background, #background, body{  
background: rgb(77, 40, 46) }
```

If only the background color should be changed can be used:

```
.background{ background-color: rgb(77, 40,  
46) }
```

This example shows the color as background, it is applied via the CSS property "background".

To optimize and compress your CSS code, you can use our [online CSS compressor and optimizer](#) based on csstidy. If you want to create a linear or radial gradient as background or border, check our [CSS Gradient Generator](#).

Hey! You found this booklet interesting? Support Converting Colors with the new Membership Option!

The pro membership hides all ads, plus gives you double the colors in the color bucket, and more awesome pro features!

[Learn more, Memberships starting at \\$2.50/m!](#)

**Follow me
on Twitter!**

@ConvertingColor