

# Converting Colors

YUV(51.8990, -3.4012, 17.6286)

Have a look what the booklet for  
YUV(51.8990, -3.4012, 17.6286)  
contains.

<b>YUV(51.8990, -3.4012, 17.6286)</b> .....	3
<b><i>Conversions</i></b> .....	4
<b><i>Details</i></b> .....	6
<b><i>Harmonies</i></b> .....	12
<b><i>Previews</i></b> .....	24
<b><i>Color Blindness Simulation</i></b> .....	28
<b><i>CSS Examples</i></b> .....	31

# Color

**YUV(51.8990, -3.4012,  
17.6286)**

# Conversions

## Conversions Part 1

<b>Format</b>	<b>Color</b>
Hex	482B2D
RGB	72, 43, 45
RGB Percent	28%, 17%, 18%
CMY	0.7176, 0.8314, 0.8235
CMYK	0.00, 0.40, 0.37, 0.72
HSL	356°, 25%, 23%
HSV	356°, 40%, 28%
XYZ	4.0100, 3.2949, 2.9073
YIQ	51.8990, 16.6420, 6.7700

# Conversions

## Conversions Part 2

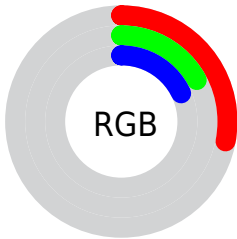
<b>Format</b>	<b>Color</b>
<b>R<sub>YB</sub></b>	72, 43, 45
Decimal	4729645
CIE <sub>Lab</sub>	21.19, 13.77, 4.34
CIE <sub>LCh</sub>	21, 14.436, 17.497
Yxy	3.2949, 0.3927, 0.3226
Android (android.graphics.Color)	4282919725 (0xFF482B2D)
YUV	51.8990, -3.4012, 17.6286
Hunter-Lab	18.1520, 7.6672, 3.2103

# Details

The YUV color **51.8990, -3.4012, 17.6286** is a dark color, and the websafe version is hex **663333**. A complement of this color would be **63.1010, 3.4012, -17.6286**, and the grayscale version is **52.0000, 0.0000, 0.0000**.

A 20% lighter version of the original color is **99.0950, -3.9908, 20.0877**, and **8.9700, -4.4222, 18.4433** is the 20% darker color. If you saturate the color by 10%, you get **46.9920, -4.4331, 21.9320**, and if you desaturate by 10%, it is **56.8060, -2.3694, 13.3251**.

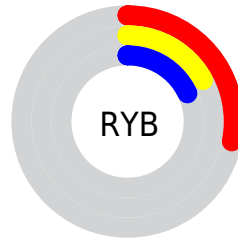
# Distribution



Red (28%)

Green (17%)

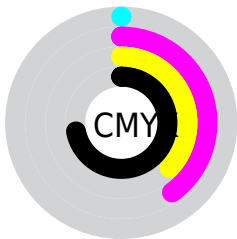
Blue (18%)



Red (28%)

Yellow (17%)

Blue (18%)

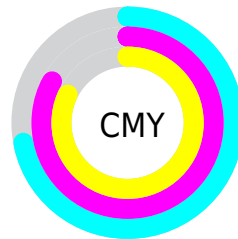


Cyan (0%)

Magenta (40%)

Yellow (37%)

Black (72%)



Cyan (72%)

Magenta (83%)

Yellow (82%)

# Brightness & Saturation Gradients

These gradients show how the YUV color 51.8990, -3.4012, 17.6286 changes by changing the brightness by 10 percent. The first figure shows a shift by +10% for each color and the second figure -10%.

Similar to the brightness gradients but the following saturation gradients show a change of the YUV color 51.8990, -3.4012, 17.6286 by changing the saturation by 10% instead.



■ 51.8990, -3.4012,  
17.6286

■ 51.8990, -3.4012,  
17.6286

■ 255.0000, 0.0000,  
0.0000

■ 30.3010, -3.1064,  
16.3990

■ 99.0950, -3.9908,  
20.0877

■ 8.9700, -4.4222,  
18.4433

■ 123.6930, -4.2856,  
21.3172

■ 0.0000, 0.0000,  
0.0000

■ 149.9920, -4.4331,  
21.9320

■ 176.2910, -4.5805,  
22.5468

■ 204.4760, -5.1647,  
23.2615

■ 231.2800, -4.5750,

20.8024

251.0220, -0.0108,  
3.4887

51.8990, -3.4012,  
17.6286

51.8990, -3.4012,  
17.6286

46.9920, -4.4331,  
21.9320

56.8060, -2.3694,  
13.3251

42.1990, -5.0281,  
26.1355

61.5990, -1.7743,  
9.1217

36.7050, -5.7706,  
30.9537

67.0930, -1.0318,  
4.3034

31.7980, -6.8024,  
35.2572

72.0000, 0.0000,  
0.0000

26.8910, -7.8343,  
39.5606

76.9070, 1.0318,  
-4.3034

■ 22.0980, -8.4293,  
43.7641

■ 81.7000, 1.6269,  
-8.5069

■ 86.6070, 2.6587,  
-12.8103

■ 92.1010, 3.4012,  
-17.6286

■ 96.8940, 3.9963,  
-21.8320

# Harmonies

## Analogous

The Analogous color harmony consists of three colors that are next to each other on the color wheel.



52.2560, 1.8458, 14.6845



51.8990, -3.4012, 17.6286



51.1500, -7.4689, 15.6545

# Triad

The Triadic color harmony groups three colors that are evenly spaced from another and form a triangle on the color wheel.



51.8990, -3.4012, 17.6286



48.3490, -6.0881, -7.3221



47.8760, 11.4001, -16.5543

# Complementary

The Complementary color scheme is a pair of colors which are on the opposite of each other on the color wheel.



51.8990, -3.4012, 17.6286



63.1010, 3.4012, -17.6286

# Split Complementary

Split-complementary colors differ from the complementary color scheme. The scheme consists of three colors, the original color and two neighbors of the complement color.



45.1800, 10.2643, -25.5909



51.8990, -3.4012, 17.6286



46.1890, -0.0932, -16.8288

# Square

The Square scheme is like the rectangle color scheme, but the four colors are evenly spaced on the color wheel.



51.8990, -3.4012, 17.6286



49.4920, -9.6096, 2.1995



44.7410, 6.0437, -25.2059



51.1980, 9.7624, -4.5586



# Rectangle

The Rectangle color scheme consists of four colors that form a rectangle on the color wheel.



51.8990, -3.4012, 17.6286



50.5580, -9.6421, 12.6656



44.7410, 6.0437, -25.2059



46.8540, 11.4110, -20.0430

# Sweetspot

The Sweet Spot groups the original color and five complimentary colors.



51.8990, -3.4012, 17.6286



86.4030, -1.1847, 6.6626



54.3790, 8.6872, 13.6996



43.7940, -0.8844, 3.6887



176.0000, 0.0000, 0.0000



48.0000, 0.0000, 0.0000



# Same Dimension

The Same Dimension uses a secret algorithm to generate beautiful new colors.



51.8990, -3.4012, 17.6286



62.7970, -5.3229, 27.3650



58.7150, -7.7475, 11.6509



33.1960, -0.5896, 2.4591



30.3990, -11.5357, 60.1631



69.6970, -26.4726, 137.9547



# Inverse Universe

The Inverse Universe completely reimagines the original color for something new.



51.8990, -3.4012, 17.6286



62.7970, -5.3229, 27.3650



56.2850, 7.7475, -11.6509



33.1960, -0.5896, 2.4591



30.3990, -11.5357, 60.1631

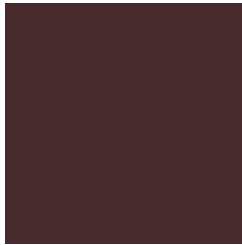


69.6970, -26.4726, 137.9547



# Previews

## White Background



This preview shows how the YUV color 51.8990, -3.4012, 17.6286 looks on a white background.

## Color Contrast Check

Large Text (above 18pt) WCAG AA ✓ Pass

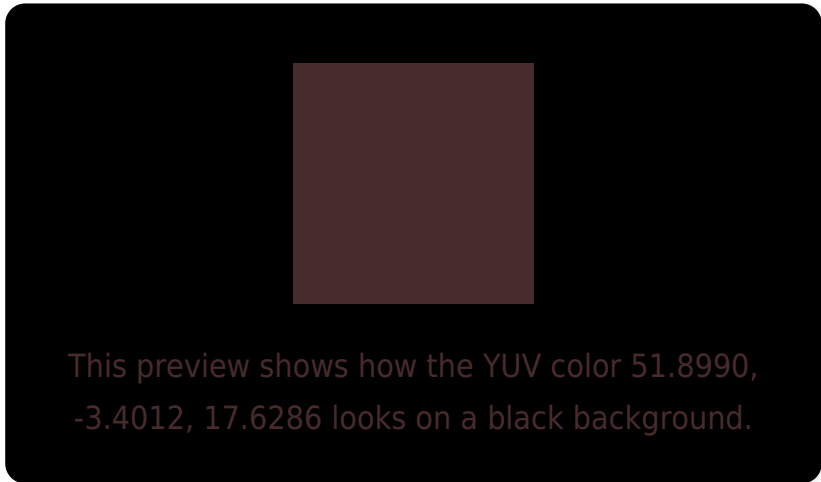
Any Text WCAG AA ✓ Pass

Large Text (above 18pt) WCAG AAA ✓ Pass

Any Text WCAG AAA ✓ Pass



# Black Background



## Color Contrast Check

Large Text (above 18pt) WCAG AA × Fail

Any Text WCAG AA × Fail

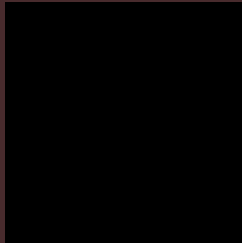
Large Text (above 18pt) WCAG AAA × Fail

Any Text WCAG AAA × Fail

If you want to check with other color combinations, try the [Color Contrast Checker](#).

**YUV 51.8990, -3.4012, 17.6286**

## **Background**



This preview shows how black text looks on a background with the YUV color 51.8990, -3.4012, 17.6286.



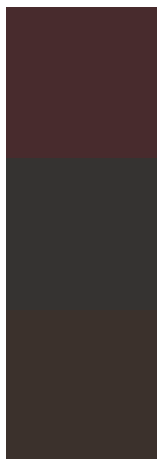
This preview shows how white text looks on a background with the YUV color 51.8990, -3.4012,



# Color Blindness Simulation

Color vision deficiency is a very complex topic, and I could not describe the different causes any better than Wikipedia does, so if you want to learn more, you should check out their [article about color blindness](#).

## Dichromacy



### Original Color

51.8990, -3.4012, 17.6286

### Protanopia

51.3700, -1.1684, 1.4295

### Deuteranopia

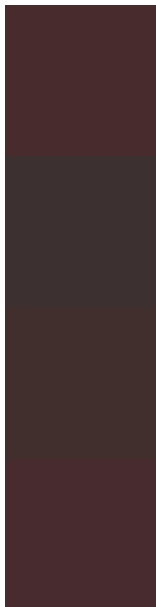
51.4200, -3.6581, 6.6477



## Tritanopia

52.0130, -2.9644, 17.5286

# Trichromacy



## Original Color

51.8990, -3.4012, 17.6286

## Protanomaly

51.5880, -1.7689, 7.3773

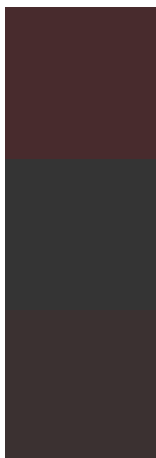
## Deuteranomaly

51.7410, -3.8163, 10.7511

## Tritanomaly

52.0130, -2.9644, 17.5286

# Monochromacy



## Original Color

51.8990, -3.4012, 17.6286

## Achromatopsia

52.0000, 0.0000, 0.0000

## Achromatomaly

51.9900, -1.4741, 6.1478

# CSS Examples

## Text

The CSS property to change the color of the text to YUV 51.8990, -3.4012, 17.6286 is called "color". The color property can be set on classes, ids or directly on the HTML element.

This example shows how text in the color `rgb(72, 43, 45)` looks like.

```
.text, #text, p{  
    color:rgb(72, 43, 45)  
}
```

If you want to add a text shadow in that color use the text-shadow property, you can generate a text shadow directly with our [CSS Text Shadow Generator](#).

Here you see how black text with a 4 pixel rgb(72, 43, 45) colored shadow looks like.

```
.shadow{ text-shadow: 4px 4px 2px rgb(72, 43, 45) }
```

## Border

The CSS property to change the border of an element to YUV 51.8990, -3.4012, 17.6286 is called "border". The border property can be set on classes, ids or directly on the HTML element.

This example shows the color as border, it can be applied via the CSS property "border" or "border-color".

```
.border, #border, table{ border:4px solid rgb(72, 43, 45) }
```



If only the border color should be changed use the property `border-color`.

```
.border{ border-color:rgb(72, 43, 45) }
```

If you want to add a box shadow in that color use:

Here you see how a box with a 4 pixel `rgb(72, 43, 45)` colored shadow looks like.

```
.boxshadow{ -moz-box-shadow:4px 4px 4px  
4px rgb(72, 43, 45); -webkit-box-  
shadow:4px 4px 4px 4px rgb(72, 43, 45);  
box-shadow:4px 4px 4px 4px rgb(72, 43, 45)  
}
```

# Background

The CSS property to change the background color of an element to YUV 51.8990, -3.4012, 17.6286 is called "background". The background property can be set on classes, ids or directly on the HTML element.

```
.background, #background, body{  
background: rgb(72, 43, 45) }
```

If only the background color should be changed can be used:

```
.background{ background-color: rgb(72, 43,  
45) }
```

This example shows the color as background, it is applied via the CSS property "background".

To optimize and compress your CSS code, you can use our [online CSS compressor and optimizer](#) based on csstidy. If you want to create a linear or radial gradient as background or border, check our [CSS Gradient Generator](#).

Hey! You found this booklet interesting? Support Converting Colors with the new Membership Option!

The pro membership hides all ads, plus gives you double the colors in the color bucket, and more awesome pro features!

**[Learn more, Memberships starting at \\$2.50/m!](#)**

**Follow me  
on Twitter!**

@ConvertingColor