

# Converting Colors

YUV(52.2740, -5.5581, 9.4067)

Have a look what the booklet for  
YUV(52.2740, -5.5581, 9.4067)  
contains.

<b>YUV(52.2740, -5.5581, 9.4067)</b> .....	3
<b><i>Conversions</i></b> .....	4
<b><i>Details</i></b> .....	6
<b><i>Harmonies</i></b> .....	12
<b><i>Previews</i></b> .....	24
<b><i>Color Blindness Simulation</i></b> .....	28
<b><i>CSS Examples</i></b> .....	31

# Color

**YUV(52.2740, -5.5581,  
9.4067)**

# Conversions

## Conversions Part 1

Format	Color
Hex	3F3129
RGB	63, 49, 41
RGB Percent	25%, 19%, 16%
CMY	0.7529, 0.8078, 0.8392
CMYK	0.00, 0.22, 0.35, 0.75
HSL	22°, 21%, 20%
HSV	22°, 35%, 25%
XYZ	3.5485, 3.4135, 2.5697
YIQ	52.2740, 10.9120, 0.4800

# Conversions

## Conversions Part 2

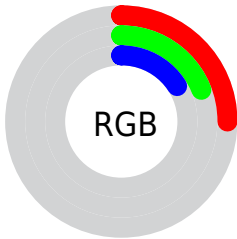
<b>Format</b>	<b>Color</b>
<b>RYB</b>	63, 54, 41
Decimal	4141353
CIELab	21.63, 4.92, 7.51
CIElCh	22, 8.976, 56.791
Yxy	3.4135, 0.3723, 0.3581
Android (android.graphics.Color)	4282331433 (0xFF3F3129)
YUV	52.2740, -5.5581, 9.4067
Hunter-Lab	18.4756, 1.9506, 4.6866

# Details

The YUV color **52.2740, -5.5581, 9.4067** is a dark color, and the websafe version is hex **333333**. A complement of this color would be **51.7260, 5.5581, -9.4067**, and the grayscale version is **52.0000, 0.0000, 0.0000**.

A 20% lighter version of the original color is **98.7580, -6.2897, 10.7362**, and **6.8550, -3.3795, 10.6512** is the 20% darker color. If you saturate the color by 10%, you get **49.2420, -7.0213, 12.0658**, and if you desaturate by 10%, it is **55.3060, -4.0949, 6.7476**.

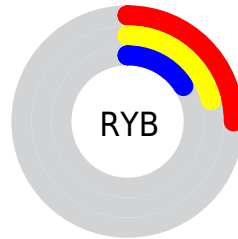
# Distribution



 Red (25%)

 Green (19%)

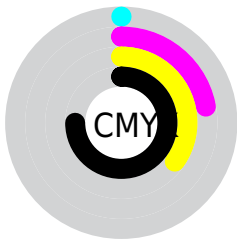
 Blue (16%)



 Red (25%)

 Yellow (21%)

 Blue (16%)

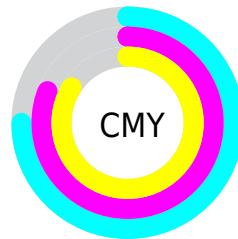


 Cyan (0%)

 Magenta (22%)

 Yellow (35%)

 Black (75%)



 Cyan (75%)

 Magenta (81%)

 Yellow (84%)

# Brightness & Saturation Gradients

These gradients show how the YUV color 52.2740, -5.5581, 9.4067 changes by changing the brightness by 10 percent. The first figure shows a shift by +10% for each color and the second figure -10%.

Similar to the brightness gradients but the following saturation gradients show a change of the YUV color 52.2740, -5.5581, 9.4067 by changing the saturation by 10% instead.



■ 52.2740, -5.5581,  
9.4067

■ 52.2740, -5.5581,  
9.4067

■ 255.0000, 0.0000,  
0.0000

■ 31.0890, -4.9739,  
8.6919

■ 98.7580, -6.2897,  
10.7362

■ 6.8550, -3.3795,  
10.6512

■ 123.9430, -6.8739,  
11.4510

■ 0.0000, 0.0000,  
0.0000

■ 149.3560, -6.5845,  
11.9658

■ 176.2420, -7.0213,  
12.0658

■ 203.5410, -7.1687,  
12.6805

■ 231.8400, -7.3161,

13.2953

■ 253.8600, -4.3680,  
0.9998

■ 52.2740, -5.5581,  
9.4067

■ 52.2740, -5.5581,  
9.4067

■ 49.2420, -7.0213,  
12.0658

■ 55.3060, -4.0949,  
6.7476

■ 46.0960, -8.9213,  
14.8248

■ 58.4520, -2.1948,  
3.9886

■ 43.0640, -10.3846,  
17.4839

■ 61.4840, -0.7316,  
1.3295

■ 40.0320, -11.8478,  
20.1429

■ 64.5160, 0.7316,  
-1.3295

■ 37.0000, -13.3110,  
22.8020

■ 67.6620, 2.6316,  
-4.0886

■ 33.8540, -15.2110,  
25.5610

■ 70.6940, 4.0949,  
-6.7476

■ 32.3380, -15.9426,  
26.8906

■ 73.7260, 5.5581,  
-9.4067

■ 76.7580, 7.0213,  
-12.0658

■ 79.9040, 8.9213,  
-14.8248

# Harmonies

## Analogous

The Analogous color harmony consists of three colors that are next to each other on the color wheel.



52.5670, -3.2375, 11.7807



52.2740, -5.5581, 9.4067



51.7250, -6.2734, 5.5032

# Triad

The Triadic color harmony groups three colors that are evenly spaced from another and form a triangle on the color wheel.



52.2740, -5.5581, 9.4067



49.7490, 0.6167, -11.1809



52.1940, 5.8204, -0.1701

# Complementary

The Complementary color scheme is a pair of colors which are on the opposite of each other on the color wheel.



52.2740, -5.5581, 9.4067



51.7260, 5.5581, -9.4067

# Split Complementary

Split-complementary colors differ from the complementary color scheme. The scheme consists of three colors, the original color and two neighbors of the complement color.



51.3780, 6.7156, -7.3475



52.2740, -5.5581, 9.4067



49.6500, 4.1166, -13.7250

# Square

The Square scheme is like the rectangle color scheme, but the four colors are evenly spaced on the color wheel.



52.2740, -5.5581, 9.4067



50.1580, -3.0359, -6.2776



49.6440, 6.5845, -11.9658



52.8420, 3.0359, 6.2776



# Rectangle

The Rectangle color scheme consists of four colors that form a rectangle on the color wheel.



52.2740, -5.5581, 9.4067



51.4040, -6.1152, 1.3997



49.6440, 6.5845, -11.9658



51.8840, 5.9732, -2.5293

# Sweetspot

The Sweet Spot groups the original color and five complimentary colors.



52.2740, -5.5581, 9.4067



77.4520, -2.1948, 3.9886



49.1740, 2.8722, 12.1254



38.6690, -1.3158, 2.0443



168.0000, 0.0000, 0.0000



41.0000, 0.0000, 0.0000



# Same Dimension

The Same Dimension uses a secret algorithm to generate beautiful new colors.



52.2740, -5.5581, 9.4067



65.0960, -8.9213, 14.8248



58.7310, -8.7414, 3.7439



29.4840, -0.7316, 1.3295



48.0640, -23.6956, 40.2859



113.9250, -56.1650, 94.7818



# Inverse Universe

The Inverse Universe completely reimagines the original color for something new.



51.7260, 5.5581, -9.4067



63.9040, 8.9213, -14.8248



45.2690, 8.7414, -3.7439



28.9290, 1.0210, -0.8147



45.9360, 23.6956, -40.2859

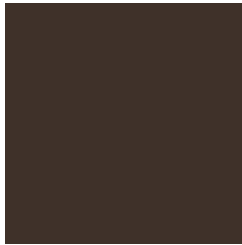


108.0750, 56.1650, -94.7818



# Previews

## White Background



This preview shows how the YUV color 52.2740, -5.5581, 9.4067 looks on a white background.

## Color Contrast Check

Large Text (above 18pt) WCAG AA ✓ Pass

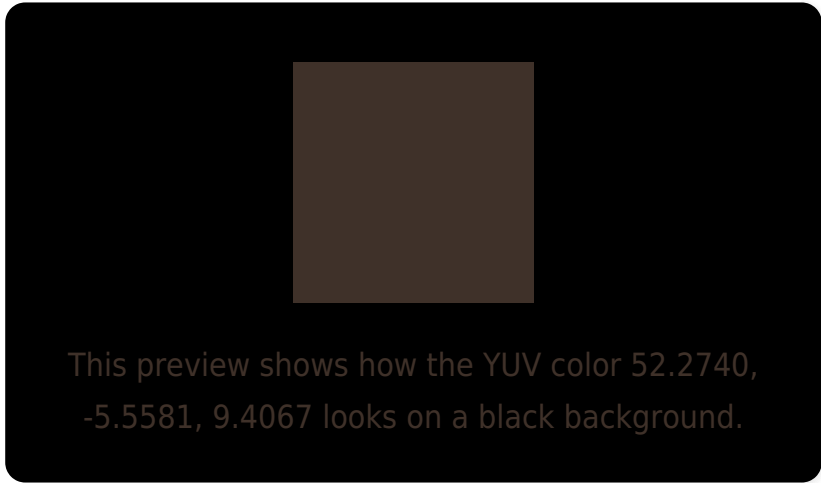
Any Text WCAG AA ✓ Pass

Large Text (above 18pt) WCAG AAA ✓ Pass

Any Text WCAG AAA ✓ Pass



# Black Background



## Color Contrast Check

Large Text (above 18pt) WCAG AA × Fail

Any Text WCAG AA × Fail

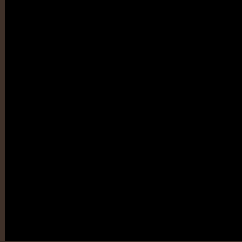
Large Text (above 18pt) WCAG AAA × Fail

Any Text WCAG AAA × Fail

If you want to check with other color combinations, try the [Color Contrast Checker](#).

**YUV 52.2740, -5.5581, 9.4067**

## **Background**



This preview shows how black text looks on a background with the YUV color 52.2740, -5.5581, 9.4067.



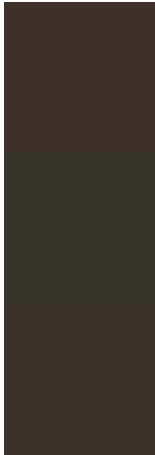
This preview shows how white text looks on a background with the YUV color 52.2740, -5.5581, 9.4067.



# Color Blindness Simulation

Color vision deficiency is a very complex topic, and I could not describe the different causes any better than Wikipedia does, so if you want to learn more, you should check out their [article about color blindness](#).

## Dichromacy



### Original Color

52.2740, -5.5581, 9.4067

### Protanopia

51.7570, -4.8102, 2.8441

### Deuteranopia

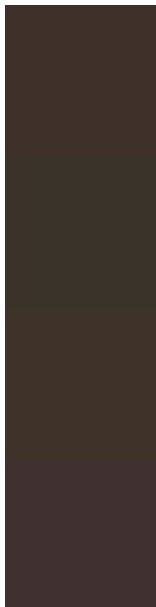
52.2630, -5.5527, 7.6623



## Tritanopia

53.1260, -1.0481, 9.5365

# Trichromacy



## Original Color

52.2740, -5.5581, 9.4067

## Protanomaly

52.0670, -4.9630, 5.2032

## Deuteranomaly

52.5620, -5.7001, 8.2771

## Tritanomaly

52.6700, -2.7953, 9.9364

# Monochromacy



## Original Color

52.2740, -5.5581, 9.4067

## Achromatopsia

52.0000, 0.0000, 0.0000

## Achromatomaly

52.1530, -2.0474, 3.3738

# CSS Examples

## Text

The CSS property to change the color of the text to YUV 52.2740, -5.5581, 9.4067 is called "color". The color property can be set on classes, ids or directly on the HTML element.

This example shows how text in the color `rgb(63, 49, 41)` looks like.

```
.text, #text, p{  
    color:rgb(63, 49, 41)  
}
```

If you want to add a text shadow in that color use the text-shadow property, you can generate a text shadow directly with our [CSS Text Shadow Generator](#).

Here you see how black text with a 4 pixel rgb(63, 49, 41) colored shadow looks like.

```
.shadow{ text-shadow: 4px 4px 2px rgb(63, 49, 41) }
```

## Border

The CSS property to change the border of an element to YUV 52.2740, -5.5581, 9.4067 is called "border". The border property can be set on classes, ids or directly on the HTML element.

This example shows the color as border, it can be applied via the CSS property "border" or "border-color".

```
.border, #border, table{ border:4px solid rgb(63, 49, 41) }
```



If only the border color should be changed use the property `border-color`.

```
.border{ border-color:rgb(63, 49, 41) }
```

If you want to add a box shadow in that color use:

Here you see how a box with a 4 pixel `rgb(63, 49, 41)` colored shadow looks like.

```
.boxshadow{ -moz-box-shadow:4px 4px 4px  
4px rgb(63, 49, 41); -webkit-box-  
shadow:4px 4px 4px 4px rgb(63, 49, 41);  
box-shadow:4px 4px 4px 4px rgb(63, 49, 41)  
}
```

# Background

The CSS property to change the background color of an element to YUV 52.2740, -5.5581, 9.4067 is called "background". The background property can be set on classes, ids or directly on the HTML element.

```
.background, #background, body{  
background: rgb(63, 49, 41) }
```

If only the background color should be changed can be used:

```
.background{ background-color: rgb(63, 49,  
41) }
```

This example shows the color as background, it is applied via the CSS property "background".

To optimize and compress your CSS code, you can use our [online CSS compressor and optimizer](#) based on csstidy. If you want to create a linear or radial gradient as background or border, check our [CSS Gradient Generator](#).

Hey! You found this booklet interesting? Support Converting Colors with the new Membership Option!

The pro membership hides all ads, plus gives you double the colors in the color bucket, and more awesome pro features!

**[Learn more, Memberships starting at \\$2.50/m!](#)**

**Follow me  
on Twitter!**

@ConvertingColor