

Converting Colors

YUV(52.3330, -1.6432, 13.7400)

Have a look what the booklet for
YUV(52.3330, -1.6432, 13.7400)
contains.

YUV(52.3330, -1.6432, 13.7400)	3
<i>Conversions</i>	4
<i>Details</i>	6
<i>Harmonies</i>	12
<i>Previews</i>	24
<i>Color Blindness Simulation</i>	28
<i>CSS Examples</i>	31

Color

**YUV(52.3330, -1.6432,
13.7400)**

Conversions

Conversions Part 1

Format	Color
Hex	442D31
RGB	68, 45, 49
RGB Percent	27%, 18%, 19%
CMY	0.7333, 0.8235, 0.8078
CMYK	0.00, 0.34, 0.28, 0.73
HSL	350°, 20%, 22%
HSV	350°, 34%, 27%
XYZ	3.8767, 3.3275, 3.3437
YIQ	52.3330, 12.4240, 6.1200

Conversions

Conversions Part 2

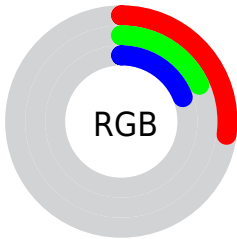
Format	Color
R_{YB}	68, 45, 49
Decimal	4468017
CIE _{Lab}	21.31, 11.29, 1.70
CIE _{LCh}	21, 11.418, 8.552
Yxy	3.3275, 0.3675, 0.3155
Android (android.graphics.Color)	4282658097 (0xFF442D31)
YUV	52.3330, -1.6432, 13.7400
Hunter-Lab	18.2413, 6.0126, 1.9010

Details

The YUV color **52.3330, -1.6432, 13.7400** is a dark color, and the websafe version is hex **333333**. A complement of this color would be **60.6670, 1.6432, -13.7400**, and the grayscale version is **52.0000, 0.0000, 0.0000**.

A 20% lighter version of the original color is **99.2300, -2.0854, 15.5843**, and **8.1870, -3.5432, 16.4990** is the 20% darker color. If you saturate the color by 10%, you get **47.5400, -2.2382, 17.9434**, and if you desaturate by 10%, it is **57.1260, -1.0481, 9.5365**.

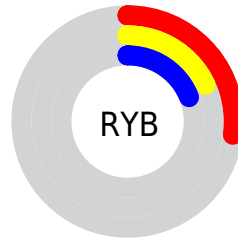
Distribution



Red (27%)

Green (18%)

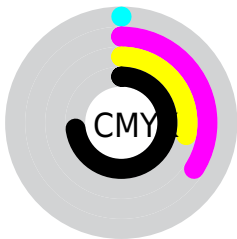
Blue (19%)



Red (27%)

Yellow (18%)

Blue (19%)

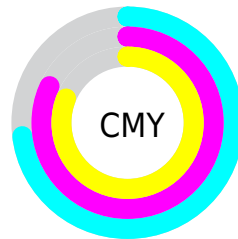


Cyan (0%)

Magenta (34%)

Yellow (28%)

Black (73%)



Cyan (73%)

Magenta (82%)

Yellow (81%)

Brightness & Saturation Gradients

These gradients show how the YUV color 52.3330, -1.6432, 13.7400 changes by changing the brightness by 10 percent. The first figure shows a shift by +10% for each color and the second figure -10%.

Similar to the brightness gradients but the following saturation gradients show a change of the YUV color 52.3330, -1.6432, 13.7400 by changing the saturation by 10% instead.

■ 52.3330, -1.6432,
13.7400

■ 52.3330, -1.6432,
13.7400

■ 255.0000, 0.0000,
0.0000

■ 30.7350, -1.3484,
12.5104

■ 99.2300, -2.0854,
15.5843

■ 8.1870, -3.5432,
16.4990

■ 124.5290, -2.2328,
16.1991

■ 0.0000, 0.0000,
0.0000

■ 149.8280, -2.3802,
16.8138

■ 177.1270, -2.5276,
17.4286

■ 204.4260, -2.6750,
18.0434

■ 232.4260, -2.6750,

18.0434

252.6520, 1.1576,
2.0592

52.3330, -1.6432,
13.7400

52.3330, -1.6432,
13.7400

47.5400, -2.2382,
17.9434

57.1260, -1.0481,
9.5365

42.8610, -2.3965,
22.0469

61.8050, -0.8899,
5.4330

38.6550, -3.2809,
25.7356

66.0110, -0.0054,
1.7444

33.9760, -3.4392,
29.8390

70.6900, 0.1528,
-2.3591

29.1830, -4.0342,
34.0425

75.4830, 0.7479,
-6.5626

■ 24.3900, -4.6293,
38.2460

■ 80.2760, 1.3429,
-10.7661

■ 21.7000, -4.7821,
40.6051

■ 84.9550, 1.5012,
-14.8695

■ 89.1610, 2.3856,
-18.5582

■ 93.9540, 2.9807,
-22.7617

Harmonies

Analogous

The Analogous color harmony consists of three colors that are next to each other on the color wheel.



52.6360, 2.1515, 9.9662



52.3330, -1.6432, 13.7400



51.7090, -5.2795, 13.4102

Triad

The Triadic color harmony groups three colors that are evenly spaced from another and form a triangle on the color wheel.



52.3330, -1.6432, 13.7400



49.7840, -5.8095, -3.3186



49.2030, 8.7739, -14.2100

Complementary

The Complementary color scheme is a pair of colors which are on the opposite of each other on the color wheel.



52.3330, -1.6432, 13.7400



60.6670, 1.6432, -13.7400

Split Complementary

Split-complementary colors differ from the complementary color scheme. The scheme consists of three colors, the original color and two neighbors of the complement color.



47.0130, 6.8956, -18.4284



52.3330, -1.6432, 13.7400



48.1790, -1.5672, -10.6810

Square

The Square scheme is like the rectangle color scheme, but the four colors are evenly spaced on the color wheel.



52.3330, -1.6432, 13.7400



50.2580, -8.0152, 4.1587



47.2860, 2.8170, -16.9138



50.8450, 8.4574, -6.0031

Rectangle

The Rectangle color scheme consists of four colors that form a rectangle on the color wheel.



52.3330, -1.6432, 13.7400



51.8290, -7.3107, 11.5510



47.2860, 2.8170, -16.9138



48.0780, 8.3425, -15.8544

Sweetspot

The Sweet Spot groups the original color and five complimentary colors.



52.3330, -1.6432, 13.7400



82.9190, -0.4531, 5.3330



53.3030, 7.2456, 9.3813



41.9080, -0.4476, 3.5887



173.0000, 0.0000, 0.0000



46.0000, 0.0000, 0.0000

Same Dimension

The Same Dimension uses a secret algorithm to generate beautiful new colors.



52.3330, -1.6432, 13.7400



64.4480, -2.6859, 21.5321



55.9860, -5.4161, 10.5363



30.8970, -0.4422, 1.8443



30.9410, -6.8729, 57.9337



71.4220, -15.9840, 133.8109

Inverse Universe

The Inverse Universe completely reimagines the original color for something new.



52.3330, -1.6432, 13.7400



64.4480, -2.6859, 21.5321



57.0140, 5.4161, -10.5363



30.8970, -0.4422, 1.8443



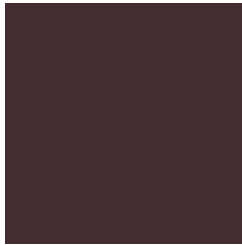
30.9410, -6.8729, 57.9337



71.4220, -15.9840, 133.8109

Previews

White Background



This preview shows how the YUV color 52.3330, -1.6432, 13.7400 looks on a white background.

Color Contrast Check

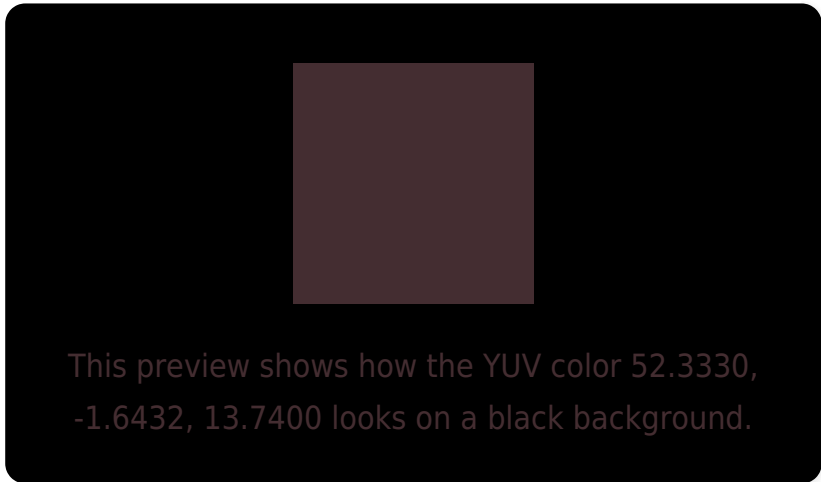
Large Text (above 18pt) WCAG AA ✓ Pass

Any Text WCAG AA ✓ Pass

Large Text (above 18pt) WCAG AAA ✓ Pass

Any Text WCAG AAA ✓ Pass

Black Background



Color Contrast Check

Large Text (above 18pt) WCAG AA × Fail

Any Text WCAG AA × Fail

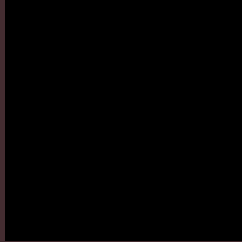
Large Text (above 18pt) WCAG AAA × Fail

Any Text WCAG AAA × Fail

If you want to check with other color combinations, try the [Color Contrast Checker](#).

YUV 52.3330, -1.6432, 13.7400

Background



This preview shows how black text looks on a background with the YUV color 52.3330, -1.6432, 13.7400.

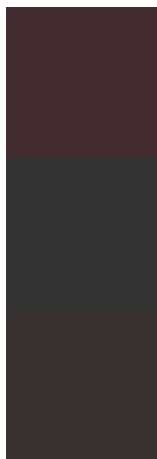


This preview shows how white text looks on a background with the YUV color 52.3330, -1.6432,

Color Blindness Simulation

Color vision deficiency is a very complex topic, and I could not describe the different causes any better than Wikipedia does, so if you want to learn more, you should check out their [article about color blindness](#).

Dichromacy



Original Color

52.3330, -1.6432, 13.7400

Protanopia

51.4130, 0.2894, 0.5148

Deuteranopia

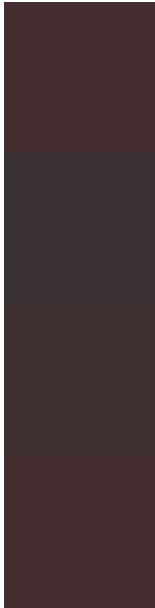
52.1640, -2.0529, 5.1182



Tritanopia

52.2190, -2.0800, 13.8399

Trichromacy



Original Color

52.3330, -1.6432, 13.7400

Protanomaly

51.9190, -0.4531, 5.3330

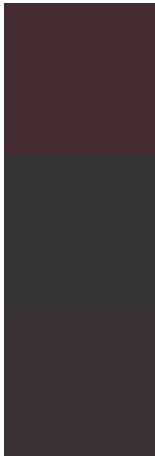
Deuteranomaly

52.1860, -2.0637, 8.6069

Tritanomaly

52.2190, -2.0800, 13.8399

Monochromacy



Original Color

52.3330, -1.6432, 13.7400

Achromatopsia

52.0000, 0.0000, 0.0000

Achromatomaly

51.9190, -0.4531, 5.3330

CSS Examples

Text

The CSS property to change the color of the text to YUV 52.3330, -1.6432, 13.7400 is called "color". The color property can be set on classes, ids or directly on the HTML element.

This example shows how text in the color `rgb(68, 45, 49)` looks like.

```
.text, #text, p{  
    color:rgb(68, 45, 49)  
}
```

If you want to add a text shadow in that color use the text-shadow property, you can generate a text shadow directly with our [CSS Text Shadow Generator](#).

Here you see how black text with a 4 pixel rgb(68, 45, 49) colored shadow looks like.

```
.shadow{ text-shadow: 4px 4px 2px rgb(68, 45, 49) }
```

Border

The CSS property to change the border of an element to YUV 52.3330, -1.6432, 13.7400 is called "border". The border property can be set on classes, ids or directly on the HTML element.

This example shows the color as border, it can be applied via the CSS property "border" or "border-color".

```
.border, #border, table{ border:4px solid rgb(68, 45, 49) }
```


If only the border color should be changed use the property `border-color`.

```
.border{ border-color:rgb(68, 45, 49) }
```

If you want to add a box shadow in that color use:

Here you see how a box with a 4 pixel `rgb(68, 45, 49)` colored shadow looks like.

```
.boxshadow{ -moz-box-shadow:4px 4px 4px  
4px rgb(68, 45, 49); -webkit-box-  
shadow:4px 4px 4px 4px rgb(68, 45, 49);  
box-shadow:4px 4px 4px 4px rgb(68, 45, 49)  
}
```

Background

The CSS property to change the background color of an element to YUV 52.3330, -1.6432, 13.7400 is called "background". The background property can be set on classes, ids or directly on the HTML element.

```
.background, #background, body{  
background: rgb(68, 45, 49) }
```

If only the background color should be changed can be used:

```
.background{ background-color: rgb(68, 45,  
49) }
```

This example shows the color as background, it is applied via the CSS property "background".

To optimize and compress your CSS code, you can use our [online CSS compressor and optimizer](#) based on csstidy. If you want to create a linear or radial gradient as background or border, check our [CSS Gradient Generator](#).

Hey! You found this booklet interesting? Support Converting Colors with the new Membership Option!

The pro membership hides all ads, plus gives you double the colors in the color bucket, and more awesome pro features!

[Learn more, Memberships starting at \\$2.50/m!](#)

**Follow me
on Twitter!**

@ConvertingColor