

Converting Colors

YUV(52.5260, -7.6543, 28.4797)

Have a look what the booklet for
YUV(52.5260, -7.6543, 28.4797)
contains.

YUV(52.5260, -7.6543, 28.4797)	3
<i>Conversions</i>	4
<i>Details</i>	6
<i>Harmonies</i>	12
<i>Previews</i>	24
<i>Color Blindness Simulation</i>	28
<i>CSS Examples</i>	31

Color

**YUV(52.5260, -7.6543,
28.4797)**

Conversions

Conversions Part 1

Format	Color
Hex	552725
RGB	85, 39, 37
RGB Percent	33%, 15%, 15%
CMY	0.6667, 0.8471, 0.8549
CMYK	0.00, 0.54, 0.56, 0.67
HSL	3°, 39%, 24%
HSV	3°, 56%, 33%
XYZ	4.8058, 3.5159, 2.1756
YIQ	52.5260, 28.0580, 9.1300

Conversions

Conversions Part 2

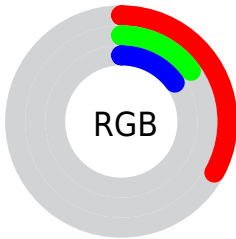
Format	Color
R_{YB}	85, 39, 37
Decimal	5580581
CIE _{Lab}	22.00, 21.09, 11.25
CIE _{LCh}	22, 23.901, 28.076
Yxy	3.5159, 0.4578, 0.3349
Android (android.graphics.Color)	4283770661 (0xFF552725)
YUV	52.5260, -7.6543, 28.4797
Hunter-Lab	18.7507, 12.9352, 6.2462

Details

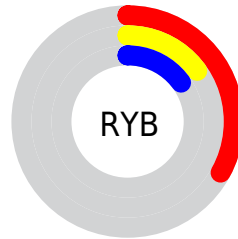
The YUV color **52.5260, -7.6543, 28.4797** is a dark color, and the websafe version is hex **663333**. A complement of this color would be **69.4740, 7.6543, -28.4797**, and the grayscale version is **53.0000, 0.0000, 0.0000**.

A 20% lighter version of the original color is **100.2060, -8.9756, 32.2683**, and **11.6610, -5.7489, 23.9763** is the 20% darker color. If you saturate the color by 10%, you get **46.8040, -9.2704, 33.4979**, and if you desaturate by 10%, it is **58.2480, -6.0383, 23.4615**.

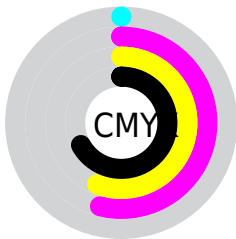
Distribution



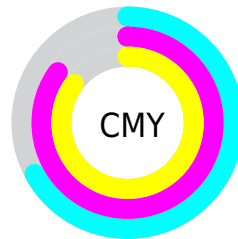
- Red (33%)
- Green (15%)
- Blue (15%)



- Red (33%)
- Yellow (15%)
- Blue (15%)



- Cyan (0%)
- Magenta (54%)
- Yellow (56%)
- Black (67%)



- Cyan (67%)
- Magenta (85%)
- Yellow (85%)

Brightness & Saturation Gradients

These gradients show how the YUV color 52.5260, -7.6543, 28.4797 changes by changing the brightness by 10 percent. The first figure shows a shift by +10% for each color and the second figure -10%.

Similar to the brightness gradients but the following saturation gradients show a change of the YUV color 52.5260, -7.6543, 28.4797 by changing the saturation by 10% instead.

■ 52.5260, -7.6543,
28.4797

■ 52.5260, -7.6543,
28.4797

255.0000, 0.0000,
0.0000

■ 29.7430, -6.7753,
26.5354

■ 100.2060, -8.9756,
32.2683

■ 11.6610, -5.7489,
23.9763

■ 125.9890, -9.8546,
34.2126

■ 0.0000, 0.0000,
0.0000

■ 152.1740,
-10.4388, 34.9274

■ 179.0710,
-10.8810, 36.7717

■ 206.6690,
-11.1758, 38.0013

■ 227.6780, -8.2223,

23.9614

248.0070, -3.9475,
6.1329

52.5260, -7.6543,
28.4797

52.5260, -7.6543,
28.4797

46.8040, -9.2704,
33.4979

58.2480, -6.0383,
23.4615

41.1960, -10.4496,
38.4161

63.8560, -4.8590,
18.5433

35.4740, -12.0657,
43.4343

69.4640, -3.6798,
13.6251

29.2790, -12.9555,
48.8673

75.7730, -2.3531,
8.0921

27.7630, -13.6872,
50.1968

81.3810, -1.1738,
3.1739

■ 87.1030, 0.4422,
-1.8443

■ 92.7110, 1.6215,
-6.7625

■ 98.4330, 3.2375,
-11.7807

■ 104.1550, 4.8536,
-16.7989

Harmonies

Analogous

The Analogous color harmony consists of three colors that are next to each other on the color wheel.



53.1050, 0.9342, 27.0949



52.5260, -7.6543, 28.4797



52.0600, -14.3266, 21.8724

Triad

The Triadic color harmony groups three colors that are evenly spaced from another and form a triangle on the color wheel.



52.5260, -7.6543, 28.4797



45.8590, -6.3395, -20.0473



46.2040, 20.6054, -29.1199

Complementary

The Complementary color scheme is a pair of colors which are on the opposite of each other on the color wheel.



52.5260, -7.6543, 28.4797



69.4740, 7.6543, -28.4797

Split Complementary

Split-complementary colors differ from the complementary color scheme. The scheme consists of three colors, the original color and two neighbors of the complement color.



43.9810, 18.7434, -38.5713



52.5260, -7.6543, 28.4797



41.6210, 4.6238, -36.5016

Square

The Square scheme is like the rectangle color scheme, but the four colors are evenly spaced on the color wheel.



52.5260, -7.6543, 28.4797



49.4930, -14.5400, -3.0634



43.6730, 12.4862, -38.3012



53.3000, 15.1351, -1.1401

Rectangle

The Rectangle color scheme consists of four colors that form a rectangle on the color wheel.



52.5260, -7.6543, 28.4797



51.3320, -16.9257, 15.4948



43.6730, 12.4862, -38.3012



43.3770, 21.5061, -38.0416

Sweetspot

The Sweet Spot groups the original color and five complimentary colors.



52.5260, -7.6543, 28.4797



97.2680, -3.0901, 11.1660



56.5960, 13.0172, 24.9103



48.2890, -1.6215, 6.7625



184.0000, 0.0000, 0.0000



56.0000, 0.0000, 0.0000

Same Dimension

The Same Dimension uses a secret algorithm to generate beautiful new colors.



52.5260, -7.6543, 28.4797



59.1860, -11.9237, 44.5639



66.6140, -14.5997, 16.1245



40.1960, -0.5896, 2.4591



34.3410, -16.9301, 63.7219



76.1350, -37.5346, 139.3246

Inverse Universe

The Inverse Universe completely reimagines the original color for something new.



69.4740, 7.6543, -28.4797



85.8140, 11.9237, -44.5639



55.3860, 14.5997, -16.1245



41.8040, 0.5896, -2.4591



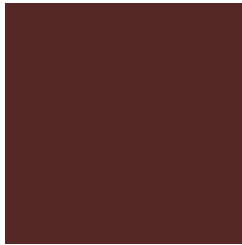
72.6590, 16.9301, -63.7219



158.8650, 37.5346, -139.3246

Previews

White Background



This preview shows how the YUV color 52.5260, -7.6543, 28.4797 looks on a white background.

Color Contrast Check

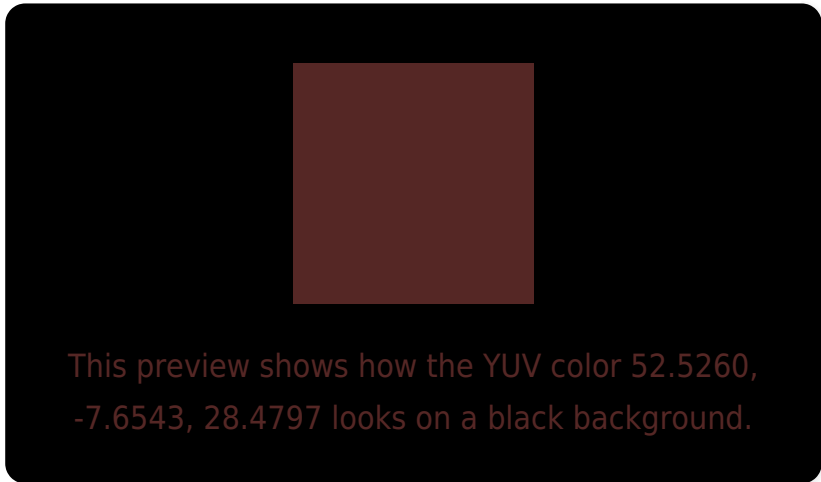
Large Text (above 18pt) WCAG AA ✓ Pass

Any Text WCAG AA ✓ Pass

Large Text (above 18pt) WCAG AAA ✓ Pass

Any Text WCAG AAA ✓ Pass

Black Background



Color Contrast Check

Large Text (above 18pt) WCAG AA × Fail

Any Text WCAG AA × Fail

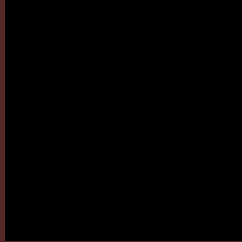
Large Text (above 18pt) WCAG AAA × Fail

Any Text WCAG AAA × Fail

If you want to check with other color combinations, try the [Color Contrast Checker](#).

YUV 52.5260, -7.6543, 28.4797

Background



This preview shows how black text looks on a background with the YUV color 52.5260, -7.6543, 28.4797.

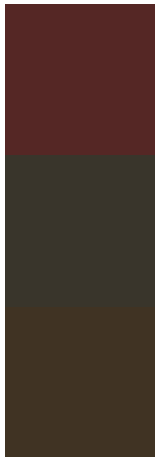


This preview shows how white text looks on a background with the YUV color 52.5260, -7.6543,

Color Blindness Simulation

Color vision deficiency is a very complex topic, and I could not describe the different causes any better than Wikipedia does, so if you want to learn more, you should check out their [article about color blindness](#).

Dichromacy



Original Color

52.5260, -7.6543, 28.4797

Protanopia

53.0560, -4.9576, 3.4589

Deuteranopia

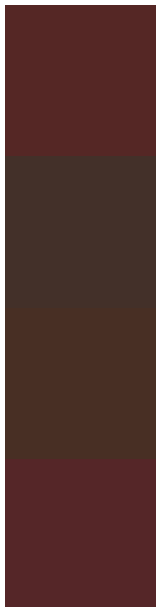
53.0630, -8.9051, 9.5917



Tritanopia

52.3950, -5.6177, 28.5946

Trichromacy



Original Color

52.5260, -7.6543, 28.4797

Protanomaly

52.8830, -5.8583, 12.3806

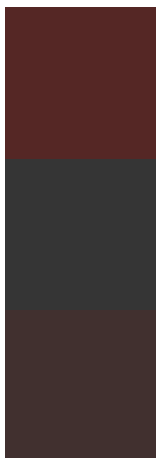
Deuteranomaly

53.2210, -8.4900, 16.4692

Tritanomaly

52.2810, -6.0545, 28.6946

Monochromacy



Original Color

52.5260, -7.6543, 28.4797

Achromatopsia

53.0000, 0.0000, 0.0000

Achromatomaly

52.9690, -2.9427, 10.5512

CSS Examples

Text

The CSS property to change the color of the text to YUV 52.5260, -7.6543, 28.4797 is called "color". The color property can be set on classes, ids or directly on the HTML element.

This example shows how text in the color `rgb(85, 39, 37)` looks like.

```
.text, #text, p{  
    color:rgb(85, 39, 37)  
}
```

If you want to add a text shadow in that color use the text-shadow property, you can generate a text shadow directly with our [CSS Text Shadow Generator](#).

Here you see how black text with a 4 pixel rgb(85, 39, 37) colored shadow looks like.

```
.shadow{ text-shadow: 4px 4px 2px rgb(85, 39, 37) }
```

Border

The CSS property to change the border of an element to YUV 52.5260, -7.6543, 28.4797 is called "border". The border property can be set on classes, ids or directly on the HTML element.

This example shows the color as border, it can be applied via the CSS property "border" or "border-color".

```
.border, #border, table{ border:4px solid rgb(85, 39, 37) }
```


If only the border color should be changed use the property `border-color`.

```
.border{ border-color:rgb(85, 39, 37) }
```

If you want to add a box shadow in that color use:

Here you see how a box with a 4 pixel `rgb(85, 39, 37)` colored shadow looks like.

```
.boxshadow{ -moz-box-shadow:4px 4px 4px  
4px rgb(85, 39, 37); -webkit-box-  
shadow:4px 4px 4px 4px rgb(85, 39, 37);  
box-shadow:4px 4px 4px 4px rgb(85, 39, 37)  
}
```

Background

The CSS property to change the background color of an element to YUV 52.5260, -7.6543, 28.4797 is called "background". The background property can be set on classes, ids or directly on the HTML element.

```
.background, #background, body{  
background: rgb(85, 39, 37) }
```

If only the background color should be changed can be used:

```
.background{ background-color: rgb(85, 39,  
37) }
```

This example shows the color as background, it is applied via the CSS property "background".

To optimize and compress your CSS code, you can use our [online CSS compressor and optimizer](#) based on csstidy. If you want to create a linear or radial gradient as background or border, check our [CSS Gradient Generator](#).

Hey! You found this booklet interesting? Support Converting Colors with the new Membership Option!

The pro membership hides all ads, plus gives you double the colors in the color bucket, and more awesome pro features!

[Learn more, Memberships starting at \\$2.50/m!](#)

**Follow me
on Twitter!**

@ConvertingColor