

Converting Colors

YUV(52.6040, 0.6882, 12.6253)

Have a look what the booklet for
YUV(52.6040, 0.6882, 12.6253)
contains.

YUV(52.6040, 0.6882, 12.6253)	3
<i>Conversions</i>	4
<i>Details</i>	6
<i>Harmonies</i>	12
<i>Previews</i>	24
<i>Color Blindness Simulation</i>	28
<i>CSS Examples</i>	31

Color

**YUV(52.6040, 0.6882,
12.6253)**

Conversions

Conversions Part 1

Format	Color
Hex	432D36
RGB	67, 45, 54
RGB Percent	26%, 18%, 21%
CMY	0.7373, 0.8235, 0.7882
CMYK	0.00, 0.33, 0.19, 0.74
HSL	335°, 20%, 22%
HSV	335°, 33%, 26%
XYZ	3.9190, 3.3364, 3.9275
YIQ	52.6040, 10.2230, 7.4630

Conversions

Conversions Part 2

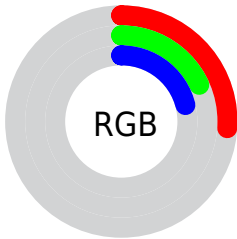
Format	Color
RYB	67, 45, 54
Decimal	4402486
CIELab	21.34, 11.77, -1.70
CIElCh	21, 11.893, 351.802
Yxy	3.3364, 0.3504, 0.2984
Android (android.graphics.Color)	4282592566 (0xFF432D36)
YUV	52.6040, 0.6882, 12.6253
Hunter-Lab	18.2658, 6.3324, 0.0377

Details

The YUV color **52.6040, 0.6882, 12.6253** is a dark color, and the websafe version is hex **333333**. A complement of this color would be **59.3960, -0.6882, -12.6253**, and the grayscale version is **53.0000, 0.0000, 0.0000**.

A 20% lighter version of the original color is **99.6150, 0.6828, 14.3696**, and **8.9140, 0.5354, 14.9844** is the 20% darker color. If you saturate the color by 10%, you get **48.0390, 0.9668, 16.6288**, and if you desaturate by 10%, it is **57.1690, 0.4097, 8.6218**.

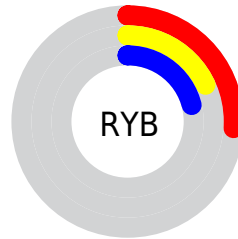
Distribution



Red (26%)

Green (18%)

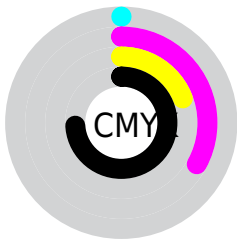
Blue (21%)



Red (26%)

Yellow (18%)

Blue (21%)

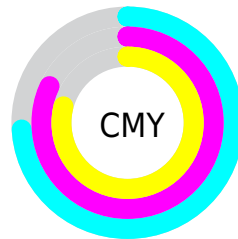


Cyan (0%)

Magenta (33%)

Yellow (19%)

Black (74%)



Cyan (74%)

Magenta (82%)

Yellow (79%)

Brightness & Saturation Gradients

These gradients show how the YUV color 52.6040, 0.6882, 12.6253 changes by changing the brightness by 10 percent. The first figure shows a shift by +10% for each color and the second figure -10%.

Similar to the brightness gradients but the following saturation gradients show a change of the YUV color 52.6040, 0.6882, 12.6253 by changing the saturation by 10% instead.

■ 52.6040, 0.6882,
12.6253

■ 52.6040, 0.6882,
12.6253

■ 255.0000, 0.0000,
0.0000

■ 31.0060, 0.9830,
11.3957

■ 99.6150, 0.6828,
14.3696

■ 8.9140, 0.5354,
14.9844

■ 124.6150, 0.6828,
14.3696

■ 0.0000, 0.0000,
0.0000

■ 150.2130, 0.3880,
15.5992

■ 177.2130, 0.3880,
15.5992

■ 204.6260, 0.6774,
16.1140

■ 232.9250, 0.5300,

16.7288

252.6520, 1.1576,
2.0592

52.6040, 0.6882,
12.6253

52.6040, 0.6882,
12.6253

48.0390, 0.9668,
16.6288

57.1690, 0.4097,
8.6218

44.0610, 0.9559,
20.1175

61.1470, 0.4205,
5.1331

39.4960, 1.2345,
24.1210

65.7120, 0.1420,
1.1296

34.9310, 1.5130,
28.1245

70.2770, -0.1366,
-2.8739

30.3660, 1.7916,
32.1280

74.8420, -0.4151,
-6.8774

■ 26.3880, 1.7807,
35.6167

■ 78.8200, -0.4043,
-10.3661

■ 23.1110, 1.9173,
38.4907

■ 83.3850, -0.6828,
-14.3696

■ 87.9500, -0.9614,
-18.3732

■ 91.9280, -0.9505,
-21.8619

Harmonies

Analogous

The Analogous color harmony consists of three colors that are next to each other on the color wheel.



52.5970, 4.6357, 6.4924



52.6040, 0.6882, 12.6253



52.1760, -3.5378, 14.7546

Triad

The Triadic color harmony groups three colors that are evenly spaced from another and form a triangle on the color wheel.



52.6040, 0.6882, 12.6253



50.3500, -7.5676, 0.5700



47.7680, 8.4954, -18.2135

Complementary

The Complementary color scheme is a pair of colors which are on the opposite of each other on the color wheel.



52.6040, 0.6882, 12.6253



59.3960, -0.6882, -12.6253

Split Complementary

Split-complementary colors differ from the complementary color scheme. The scheme consists of three colors, the original color and two neighbors of the complement color.



46.8450, 5.0064, -19.1581



52.6040, 0.6882, 12.6253



49.1040, -4.4883, -7.1072

Square

The Square scheme is like the rectangle color scheme, but the four colors are evenly spaced on the color wheel.



52.6040, 0.6882, 12.6253



51.1660, -8.4628, 7.7474



47.6130, 0.1908, -14.5696



49.9260, 8.9105, -11.3361

Rectangle

The Rectangle color scheme consists of four colors that form a rectangle on the color wheel.



52.6040, 0.6882, 12.6253



51.8940, -5.8637, 14.1250



47.6130, 0.1908, -14.5696



46.9420, 7.9166, -19.2431

Sweetspot

The Sweet Spot groups the original color and five complimentary colors.



52.6040, 0.6882, 12.6253



81.1470, 0.4205, 5.1331



51.3950, 7.6933, 5.7926



39.7230, 0.1366, 2.8739



171.0000, 0.0000, 0.0000



43.0000, 0.0000, 0.0000

Same Dimension

The Same Dimension uses a secret algorithm to generate beautiful new colors.



52.6040, 0.6882, 12.6253



64.7620, 1.1033, 19.5027



52.7520, -3.8217, 12.4955



31.0110, -0.0054, 1.7444



33.5630, 3.1734, 55.6342



77.4640, 7.1662, 128.5121

Inverse Universe

The Inverse Universe completely reimagines the original color for something new.



52.6040, 0.6882, 12.6253



64.7620, 1.1033, 19.5027



59.2480, 3.8217, -12.4955



31.0110, -0.0054, 1.7444



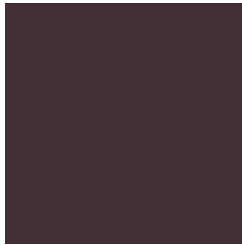
33.5630, 3.1734, 55.6342



77.4640, 7.1662, 128.5121

Previews

White Background



This preview shows how the YUV color 52.6040, 0.6882, 12.6253 looks on a white background.

Color Contrast Check

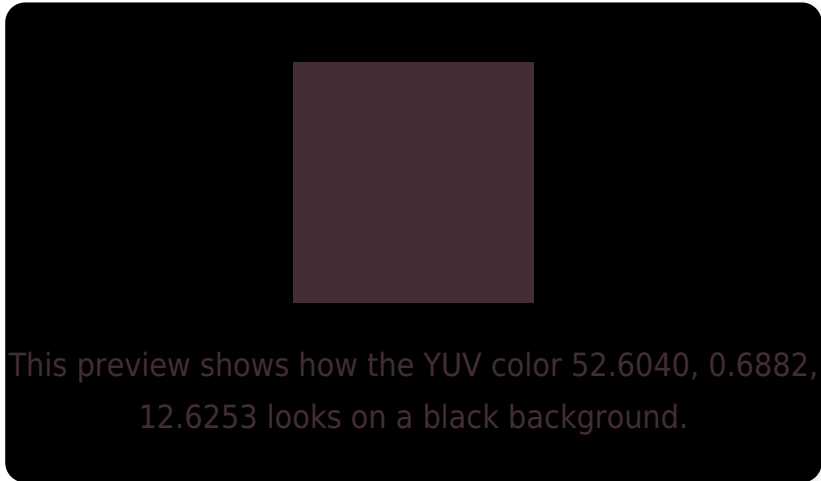
Large Text (above 18pt) WCAG AA ✓ Pass

Any Text WCAG AA ✓ Pass

Large Text (above 18pt) WCAG AAA ✓ Pass

Any Text WCAG AAA ✓ Pass

Black Background



Color Contrast Check

Large Text (above 18pt) WCAG AA × Fail

Any Text WCAG AA × Fail

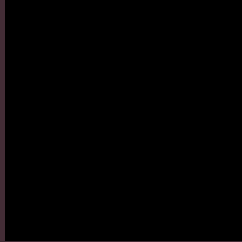
Large Text (above 18pt) WCAG AAA × Fail

Any Text WCAG AAA × Fail

If you want to check with other color combinations, try the [Color Contrast Checker](#).

YUV 52.6040, 0.6882, 12.6253

Background



This preview shows how black text looks on a background with the YUV color 52.6040, 0.6882, 12.6253.



This preview shows how white text looks on a background with the YUV color 52.6040, 0.6882,

Color Blindness Simulation

Color vision deficiency is a very complex topic, and I could not describe the different causes any better than Wikipedia does, so if you want to learn more, you should check out their [article about color blindness](#).

Dichromacy



Original Color

52.6040, 0.6882, 12.6253

Protanopia

51.7980, 3.0576, -0.6998

Deuteranopia

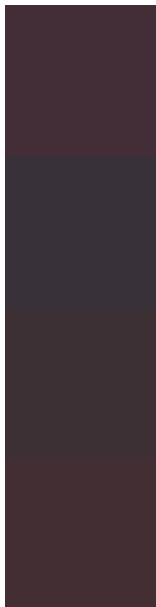
52.1360, 0.4260, 3.3887



Tritanopia

52.3220, -1.6377, 11.9956

Trichromacy



Original Color

52.6040, 0.6882, 12.6253

Protanomaly

52.3040, 2.3151, 4.1184

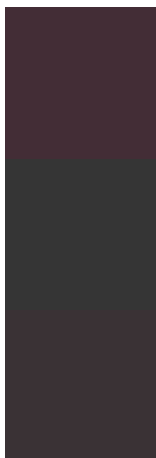
Deuteranomaly

52.1580, 0.4151, 6.8774

Tritanomaly

52.5500, -0.7641, 11.7957

Monochromacy



Original Color

52.6040, 0.6882, 12.6253

Achromatopsia

53.0000, 0.0000, 0.0000

Achromatomaly

52.7340, 0.1311, 4.6183

CSS Examples

Text

The CSS property to change the color of the text to YUV 52.6040, 0.6882, 12.6253 is called "color". The color property can be set on classes, ids or directly on the HTML element.

This example shows how text in the color `rgb(67, 45, 54)` looks like.

```
.text, #text, p{  
    color:rgb(67, 45, 54)  
}
```

If you want to add a text shadow in that color use the text-shadow property, you can generate a text shadow directly with our [CSS Text Shadow Generator](#).

Here you see how black text with a 4 pixel rgb(67, 45, 54) colored shadow looks like.

```
.shadow{ text-shadow: 4px 4px 2px rgb(67, 45, 54) }
```

Border

The CSS property to change the border of an element to YUV 52.6040, 0.6882, 12.6253 is called "border". The border property can be set on classes, ids or directly on the HTML element.

This example shows the color as border, it can be applied via the CSS property "border" or "border-color".

```
.border, #border, table{ border:4px solid rgb(67, 45, 54) }
```


If only the border color should be changed use the property `border-color`.

```
.border{ border-color:rgb(67, 45, 54) }
```

If you want to add a box shadow in that color use:

Here you see how a box with a 4 pixel `rgb(67, 45, 54)` colored shadow looks like.

```
.boxshadow{ -moz-box-shadow:4px 4px 4px  
4px rgb(67, 45, 54); -webkit-box-  
shadow:4px 4px 4px 4px rgb(67, 45, 54);  
box-shadow:4px 4px 4px 4px rgb(67, 45, 54)  
}
```

Background

The CSS property to change the background color of an element to YUV 52.6040, 0.6882, 12.6253 is called "background". The background property can be set on classes, ids or directly on the HTML element.

```
.background, #background, body{  
background: rgb(67, 45, 54) }
```

If only the background color should be changed can be used:

```
.background{ background-color: rgb(67, 45,  
54) }
```

This example shows the color as background, it is applied via the CSS property "background".

To optimize and compress your CSS code, you can use our [online CSS compressor and optimizer](#) based on csstidy. If you want to create a linear or radial gradient as background or border, check our [CSS Gradient Generator](#).

Hey! You found this booklet interesting? Support Converting Colors with the new Membership Option!

The pro membership hides all ads, plus gives you double the colors in the color bucket, and more awesome pro features!

[Learn more, Memberships starting at \\$2.50/m!](#)

**Follow me
on Twitter!**

@ConvertingColor