

Converting Colors

YUV(52.6970, -0.3436, 16.9287)

Have a look what the booklet for
YUV(52.6970, -0.3436, 16.9287)
contains.

YUV(52.6970, -0.3436, 16.9287)	3
<i>Conversions</i>	4
<i>Details</i>	6
<i>Harmonies</i>	12
<i>Previews</i>	24
<i>Color Blindness Simulation</i>	28
<i>CSS Examples</i>	31

Color

**YUV(52.6970, -0.3436,
16.9287)**

Conversions

Conversions Part 1

Format	Color
Hex	482B34
RGB	72, 43, 52
RGB Percent	28%, 17%, 20%
CMY	0.7176, 0.8314, 0.7961
CMYK	0.00, 0.40, 0.28, 0.72
HSL	341°, 25%, 23%
HSV	341°, 40%, 28%
XYZ	4.1562, 3.3534, 3.6770
YIQ	52.6970, 14.3950, 8.9470

Conversions

Conversions Part 2

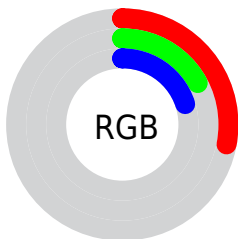
Format	Color
R_{YB}	72, 43, 52
Decimal	4729652
CIE Lab	21.41, 14.92, -0.15
CIE LCh	21, 14.916, 359.419
Yxy	3.3534, 0.3715, 0.2998
Android (android.graphics.Color)	4282919732 (0xFF482B34)
YUV	52.6970, -0.3436, 16.9287
Hunter-Lab	18.3123, 8.4662, 0.9134

Details

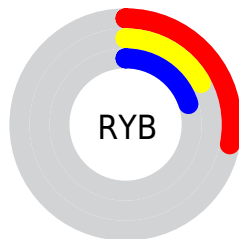
The YUV color **52.6970, -0.3436, 16.9287** is a dark color, and the websafe version is hex **663333**. A complement of this color would be **62.3030, 0.3436, -16.9287**, and the grayscale version is **53.0000, 0.0000, 0.0000**.

A 20% lighter version of the original color is **99.5940, -0.7858, 18.7731**, and **9.6540, -1.8014, 17.8434** is the 20% darker color. If you saturate the color by 10%, you get **48.0180, -0.5019, 21.0322**, and if you desaturate by 10%, it is **57.3760, -0.1854, 12.8252**.

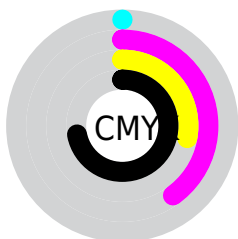
Distribution



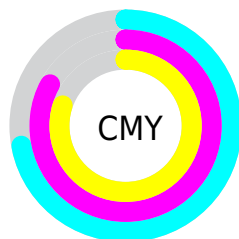
- Red (28%)
- Green (17%)
- Blue (20%)



- Red (28%)
- Yellow (17%)
- Blue (20%)



- Cyan (0%)
- Magenta (40%)
- Yellow (28%)
- Black (72%)



- Cyan (72%)
- Magenta (83%)
- Yellow (80%)

Brightness & Saturation Gradients

These gradients show how the YUV color 52.6970, -0.3436, 16.9287 changes by changing the brightness by 10 percent. The first figure shows a shift by +10% for each color and the second figure -10%.

Similar to the brightness gradients but the following saturation gradients show a change of the YUV color 52.6970, -0.3436, 16.9287 by changing the saturation by 10% instead.

■ 52.6970, -0.3436,
16.9287

■ 52.6970, -0.3436,
16.9287

■ 255.0000, 0.0000,
0.0000

■ 31.0990, -0.0488,
15.6992

■ 99.5940, -0.7858,
18.7731

■ 9.6540, -1.8014,
17.8434

■ 124.8930, -0.9332,
19.3878

■ 0.0000, 0.0000,
0.0000

■ 150.6050, -0.7913,
20.5174

■ 177.9040, -0.9387,
21.1322

■ 205.2030, -1.0861,
21.7470

■ 232.3060, -0.6439,

19.9026

251.4780, 1.7363,
3.0888

52.6970, -0.3436,
16.9287

52.6970, -0.3436,
16.9287

48.0180, -0.5019,
21.0322

57.3760, -0.1854,
12.8252

43.3390, -0.6601,
25.1357

62.0550, -0.0271,
8.7218

38.0730, -0.5290,
29.7540

67.3210, -0.1583,
4.1035

33.3940, -0.6872,
33.8575

72.0000, 0.0000,
0.0000

28.7150, -0.8455,
37.9609

76.6790, 0.1583,
-4.1035

■ 24.0360, -1.0037,
42.0644

■ 81.3580, 0.3165,
-8.2070

■ 86.0370, 0.4748,
-12.3104

■ 91.3030, 0.3436,
-16.9287

■ 95.9820, 0.5019,
-21.0322

Harmonies

Analogous

The Analogous color harmony consists of three colors that are next to each other on the color wheel.



53.0320, 4.9142, 10.4959



52.6970, -0.3436, 16.9287



52.3290, -5.5852, 18.1285

Triad

The Triadic color harmony groups three colors that are evenly spaced from another and form a triangle on the color wheel.



52.6970, -0.3436, 16.9287



49.6980, -8.7251, -1.4891



45.9460, 11.8586, -23.6316

Complementary

The Complementary color scheme is a pair of colors which are on the opposite of each other on the color wheel.



52.6970, -0.3436, 16.9287



62.3030, 0.3436, -16.9287

Split Complementary

Split-complementary colors differ from the complementary color scheme. The scheme consists of three colors, the original color and two neighbors of the complement color.



44.1150, 8.8173, -28.1649



52.6970, -0.3436, 16.9287



47.8970, -3.8932, -11.3107

Square

The Square scheme is like the rectangle color scheme, but the four colors are evenly spaced on the color wheel.



52.6970, -0.3436, 16.9287



50.8840, -10.7888, 7.1177



45.5520, 2.6859, -21.5321



49.6100, 11.5313, -11.9360

Rectangle

The Rectangle color scheme consists of four colors that form a rectangle on the color wheel.



52.6970, -0.3436, 16.9287



51.9220, -8.3425, 15.8544



45.5520, 2.6859, -21.5321



45.1090, 11.2853, -26.4056

Sweetspot

The Sweet Spot groups the original color and five complimentary colors.



52.6970, -0.3436, 16.9287



86.7450, 0.1257, 6.3626



52.2860, 9.7190, 9.3962



44.0220, -0.0108, 3.4887



176.0000, 0.0000, 0.0000



48.0000, 0.0000, 0.0000

Same Dimension

The Same Dimension uses a secret algorithm to generate beautiful new colors.



52.6970, -0.3436, 16.9287



64.0510, -0.5181, 26.2653



54.6060, -5.7218, 15.2545



33.3100, -0.1528, 2.3591



33.1350, -1.0526, 57.7636



75.8530, -2.8855, 132.5559

Inverse Universe

The Inverse Universe completely reimagines the original color for something new.



52.6970, -0.3436, 16.9287



64.0510, -0.5181, 26.2653



60.3940, 5.7218, -15.2545



33.3100, -0.1528, 2.3591



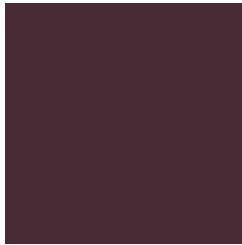
33.1350, -1.0526, 57.7636



75.8530, -2.8855, 132.5559

Previews

White Background



This preview shows how the YUV color 52.6970, -0.3436, 16.9287 looks on a white background.

Color Contrast Check

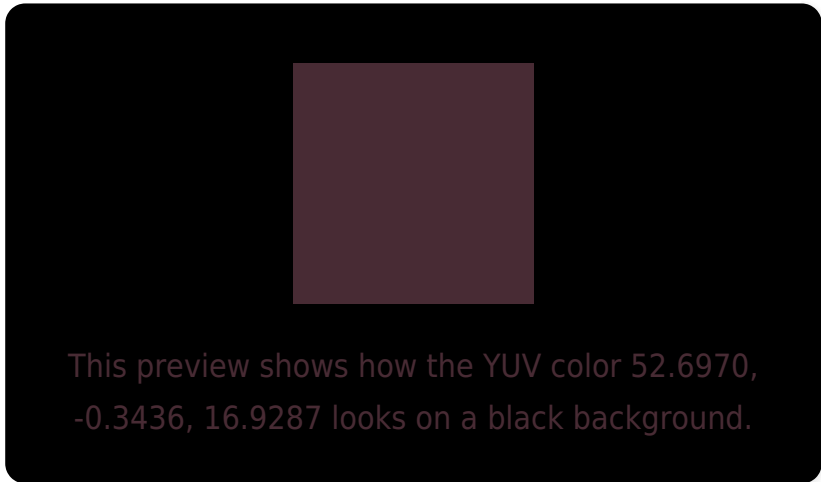
Large Text (above 18pt) WCAG AA ✓ Pass

Any Text WCAG AA ✓ Pass

Large Text (above 18pt) WCAG AAA ✓ Pass

Any Text WCAG AAA ✓ Pass

Black Background



Color Contrast Check

Large Text (above 18pt) WCAG AA × Fail

Any Text WCAG AA × Fail

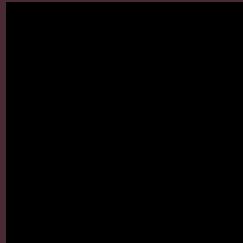
Large Text (above 18pt) WCAG AAA × Fail

Any Text WCAG AAA × Fail

If you want to check with other color combinations, try the [Color Contrast Checker](#).

YUV 52.6970, -0.3436, 16.9287

Background



This preview shows how black text looks on a background with the YUV color 52.6970, -0.3436, 16.9287.



This preview shows how white text looks on a background with the YUV color 52.6970, -0.3436,

Color Blindness Simulation

Color vision deficiency is a very complex topic, and I could not describe the different causes any better than Wikipedia does, so if you want to learn more, you should check out their [article about color blindness](#).

Dichromacy



Original Color

52.6970, -0.3436, 16.9287

Protanopia

51.6840, 2.6208, -0.5999

Deuteranopia

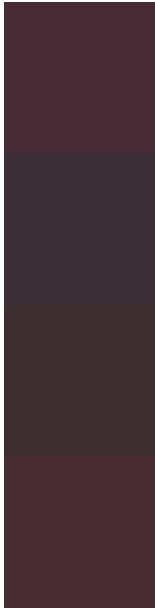
52.2070, -0.5951, 4.2035



Tritanopia

52.7140, -2.8170, 16.9138

Trichromacy



Original Color

52.6970, -0.3436, 16.9287

Protanomaly

52.0870, 1.4361, 6.0627

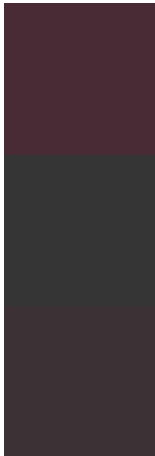
Deuteranomaly

51.9410, -0.4639, 8.8217

Tritanomaly

52.9420, -1.9434, 16.7139

Monochromacy



Original Color

52.6970, -0.3436, 16.9287

Achromatopsia

53.0000, 0.0000, 0.0000

Achromatomaly

52.7450, 0.1257, 6.3626

CSS Examples

Text

The CSS property to change the color of the text to YUV 52.6970, -0.3436, 16.9287 is called "color". The color property can be set on classes, ids or directly on the HTML element.

This example shows how text in the color `rgb(72, 43, 52)` looks like.

```
.text, #text, p{  
    color:rgb(72, 43, 52)  
}
```

If you want to add a text shadow in that color use the text-shadow property, you can generate a text shadow directly with our [CSS Text Shadow Generator](#).

Here you see how black text with a 4 pixel rgb(72, 43, 52) colored shadow looks like.

```
.shadow{ text-shadow: 4px 4px 2px rgb(72, 43, 52) }
```

Border

The CSS property to change the border of an element to YUV 52.6970, -0.3436, 16.9287 is called "border". The border property can be set on classes, ids or directly on the HTML element.

This example shows the color as border, it can be applied via the CSS property "border" or "border-color".

```
.border, #border, table{ border:4px solid rgb(72, 43, 52) }
```


If only the border color should be changed use the property `border-color`.

```
.border{ border-color:rgb(72, 43, 52) }
```

If you want to add a box shadow in that color use:

Here you see how a box with a 4 pixel `rgb(72, 43, 52)` colored shadow looks like.

```
.boxshadow{ -moz-box-shadow:4px 4px 4px  
4px rgb(72, 43, 52); -webkit-box-  
shadow:4px 4px 4px 4px rgb(72, 43, 52);  
box-shadow:4px 4px 4px 4px rgb(72, 43, 52)  
}
```

Background

The CSS property to change the background color of an element to YUV 52.6970, -0.3436, 16.9287 is called "background". The background property can be set on classes, ids or directly on the HTML element.

```
.background, #background, body{  
background: rgb(72, 43, 52) }
```

If only the background color should be changed can be used:

```
.background{ background-color: rgb(72, 43,  
52) }
```

This example shows the color as background, it is applied via the CSS property "background".

To optimize and compress your CSS code, you can use our [online CSS compressor and optimizer](#) based on csstidy. If you want to create a linear or radial gradient as background or border, check our [CSS Gradient Generator](#).

Hey! You found this booklet interesting? Support Converting Colors with the new Membership Option!

The pro membership hides all ads, plus gives you double the colors in the color bucket, and more awesome pro features!

[Learn more, Memberships starting at \\$2.50/m!](#)

**Follow me
on Twitter!**

@ConvertingColor