

Converting Colors

YUV(52.8100, -11.7383,
31.7386)

Have a look what the booklet for
YUV(52.8100, -11.7383, 31.7386)
contains.

YUV(52.8100, -11.7383, 31.7386)	3
<i>Conversions</i>	4
<i>Details</i>	6
<i>Harmonies</i>	12
<i>Previews</i>	24
<i>Color Blindness Simulation</i>	28
<i>CSS Examples</i>	31

Color

**YUV(52.8100, -11.7383,
31.7386)**

Conversions

Conversions Part 1

Format	Color
Hex	59271D
RGB	89, 39, 29
RGB Percent	35%, 15%, 11%
CMY	0.6510, 0.8471, 0.8863
CMYK	0.00, 0.56, 0.67, 0.65
HSL	10°, 51%, 23%
HSV	10°, 67%, 35%
XYZ	5.0671, 3.6636, 1.6025
YIQ	52.8100, 33.0100, 7.4900

Conversions

Conversions Part 2

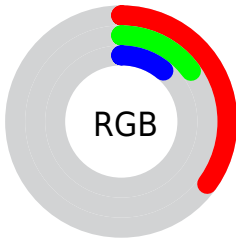
Format	Color
RYB	89, 41, 29
Decimal	5842717
CIELab	22.53, 22.12, 17.41
CIELCh	23, 28.150, 38.211
Yxy	3.6636, 0.4904, 0.3545
Android (android.graphics.Color)	4284032797 (0xFF59271D)
YUV	52.8100, -11.7383, 31.7386
Hunter-Lab	19.1405, 13.7588, 8.4345

Details

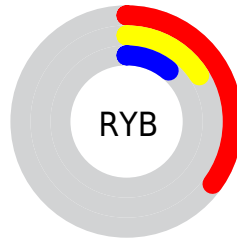
The YUV color **52.8100, -11.7383, 31.7386** is a dark color, and the websafe version is hex **663333**. A complement of this color would be **65.1900, 11.7383, -31.7386**, and the grayscale version is **53.0000, 0.0000, 0.0000**.

A 20% lighter version of the original color is **101.2620, -13.9332, 35.7272**, and **12.2590, -6.0437, 25.2059** is the 20% darker color. If you saturate the color by 10%, you get **47.6750, -13.6438, 36.2420**, and if you desaturate by 10%, it is **57.9450, -9.8329, 27.2352**.

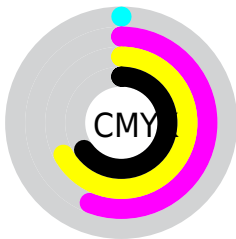
Distribution



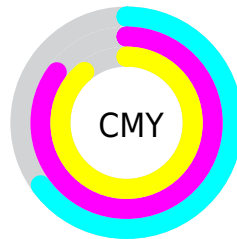
- Red (35%)
- Green (15%)
- Blue (11%)



- Red (35%)
- Yellow (16%)
- Blue (11%)



- Cyan (0%)
- Magenta (56%)
- Yellow (67%)
- Black (65%)



- Cyan (65%)
- Magenta (85%)
- Yellow (89%)

Brightness & Saturation Gradients

These gradients show how the YUV color 52.8100, -11.7383, 31.7386 changes by changing the brightness by 10 percent. The first figure shows a shift by +10% for each color and the second figure -10%.

Similar to the brightness gradients but the following saturation gradients show a change of the YUV color 52.8100, -11.7383, 31.7386 by changing the saturation by 10% instead.

■ 52.8100, -11.7383,
31.7386

■ 52.8100, -11.7383,
31.7386

255.0000, 0.0000,
0.0000

■ 29.5710, -12.6065,
30.1942

■ 101.2620,
-13.9332, 35.7272

■ 12.2590, -6.0437,
25.2059

■ 126.4580,
-14.5228, 38.1863

■ 0.0000, 0.0000,
0.0000

■ 152.8280,
-15.6912, 39.6158

■ 179.7250,
-16.1334, 41.4602

■ 207.6110,
-16.5702, 41.5602

■ 226.5380,

-12.5902, 24.9612

246.7530, -8.7522,
7.2326

52.8100, -11.7383,
31.7386

52.8100, -11.7383,
31.7386

47.6750, -13.6438,
36.2420

57.9450, -9.8329,
27.2352

41.9530, -15.2598,
41.2602

63.6670, -8.2168,
22.2170

36.8180, -17.1653,
45.7636

68.8020, -6.3114,
17.7136

35.4160, -17.4601,
46.9932

74.5240, -4.6953,
12.6955

79.6590, -2.7899,
8.1921

■ 84.6800, -1.3212,
3.7886

■ 90.4020, 0.2948,
-1.2296

■ 95.5370, 2.2003,
-5.7329

■ 101.2590, 3.8163,
-10.7511

Harmonies

Analogous

The Analogous color harmony consists of three colors that are next to each other on the color wheel.



53.0520, -1.9976, 34.1574



52.8100, -11.7383, 31.7386



52.2080, -18.8365, 21.7426

Triad

The Triadic color harmony groups three colors that are evenly spaced from another and form a triangle on the color wheel.



52.8100, -11.7383, 31.7386



41.1990, -2.0701, -36.1315



49.1060, 22.6257, -23.7720

Complementary

The Complementary color scheme is a pair of colors which are on the opposite of each other on the color wheel.



52.8100, -11.7383, 31.7386



65.1900, 11.7383, -31.7386

Split Complementary

Split-complementary colors differ from the complementary color scheme. The scheme consists of three colors, the original color and two neighbors of the complement color.



45.7080, 22.8220, -40.0859



52.8100, -11.7383, 31.7386



44.2940, 7.2501, -38.8458

Square

The Square scheme is like the rectangle color scheme, but the four colors are evenly spaced on the color wheel.



52.8100, -11.7383, 31.7386



48.4490, -14.5184, -10.0408



45.9870, 16.2754, -40.3306



55.4580, 15.5502, 5.7373

Rectangle

The Rectangle color scheme consists of four colors that form a rectangle on the color wheel.



52.8100, -11.7383, 31.7386



51.1700, -21.2828, 13.0059



45.9870, 16.2754, -40.3306



44.4030, 25.4373, -38.9414

Sweetspot

The Sweet Spot groups the original color and five complimentary colors.



52.8100, -11.7383, 31.7386



101.2250, -4.5479, 12.0807



52.6400, 12.9955, 31.8877



50.3600, -2.6425, 7.5773



186.0000, 0.0000, 0.0000



59.0000, 0.0000, 0.0000

Same Dimension

The Same Dimension uses a secret algorithm to generate beautiful new colors.



52.8100, -11.7383, 31.7386



58.6120, -18.0497, 49.4523



70.4200, -20.4201, 16.2947



40.7830, -0.8790, 1.9443



42.5590, -20.9816, 56.5148



93.1580, -45.9269, 124.3954

Inverse Universe

The Inverse Universe completely reimagines the original color for something new.



65.1900, 11.7383, -31.7386



77.8010, 18.3391, -48.9375



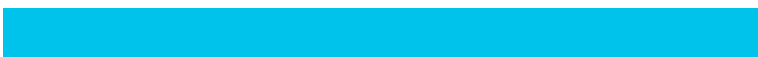
47.5800, 20.4201, -16.2947



41.8040, 0.5896, -2.4591



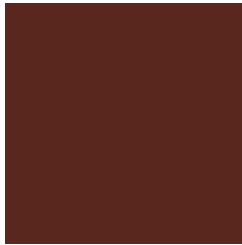
64.4410, 20.9816, -56.5148



141.2550, 46.2163, -123.8806

Previews

White Background



This preview shows how the YUV color 52.8100, -11.7383, 31.7386 looks on a white background.

Color Contrast Check

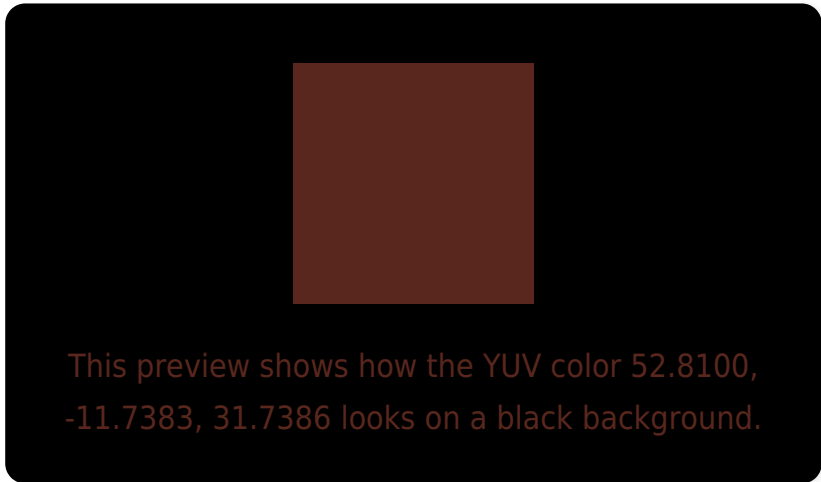
Large Text (above 18pt) WCAG AA ✓ Pass

Any Text WCAG AA ✓ Pass

Large Text (above 18pt) WCAG AAA ✓ Pass

Any Text WCAG AAA ✓ Pass

Black Background



Color Contrast Check

Large Text (above 18pt) WCAG AA × Fail

Any Text WCAG AA × Fail

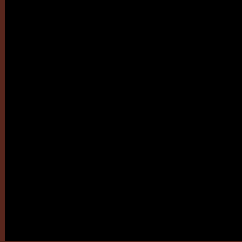
Large Text (above 18pt) WCAG AAA × Fail

Any Text WCAG AAA × Fail

If you want to check with other color combinations, try the [Color Contrast Checker](#).

YUV 52.8100, -11.7383, 31.7386

Background



This preview shows how black text looks on a background with the YUV color 52.8100, -11.7383, 31.7386.

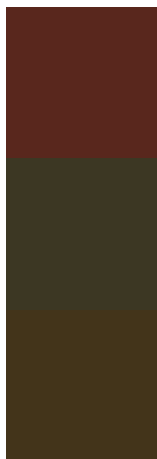


This preview shows how white text looks on a background with the YUV color 52.8100, -11.7383,

Color Blindness Simulation

Color vision deficiency is a very complex topic, and I could not describe the different causes any better than Wikipedia does, so if you want to learn more, you should check out their [article about color blindness](#).

Dichromacy



Original Color

52.8100, -11.7383, 31.7386

Protanopia

54.2150, -9.4730, 5.0734

Deuteranopia

53.5210, -13.5679, 11.8211



Tritanopia

53.7760, -6.7916, 31.7684

Trichromacy



Original Color

52.8100, -11.7383, 31.7386

Protanomaly

53.7540, -10.2317, 15.1247

Deuteranomaly

53.0920, -12.8634, 19.2133

Tritanomaly

53.3200, -8.5388, 32.1684

Monochromacy



Original Color

52.8100, -11.7383, 31.7386

Achromatopsia

53.0000, 0.0000, 0.0000

Achromatomaly

52.9260, -4.4005, 11.4659

CSS Examples

Text

The CSS property to change the color of the text to YUV 52.8100, -11.7383, 31.7386 is called "color". The color property can be set on classes, ids or directly on the HTML element.

This example shows how text in the color `rgb(89, 39, 29)` looks like.

```
.text, #text, p{  
    color:rgb(89, 39, 29)  
}
```

If you want to add a text shadow in that color use the text-shadow property, you can generate a text shadow directly with our [CSS Text Shadow Generator](#).

Here you see how black text with a 4 pixel rgb(89, 39, 29) colored shadow looks like.

```
.shadow{ text-shadow: 4px 4px 2px rgb(89, 39, 29) }
```

Border

The CSS property to change the border of an element to YUV 52.8100, -11.7383, 31.7386 is called "border". The border property can be set on classes, ids or directly on the HTML element.

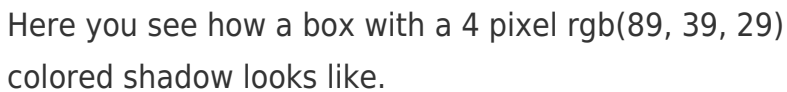
This example shows the color as border, it can be applied via the CSS property "border" or "border-color".

```
.border, #border, table{ border:4px solid rgb(89, 39, 29) }
```


If only the border color should be changed use the property `border-color`.

```
.border{ border-color:rgb(89, 39, 29) }
```

If you want to add a box shadow in that color use:



Here you see how a box with a 4 pixel `rgb(89, 39, 29)` colored shadow looks like.

```
.boxshadow{ -moz-box-shadow:4px 4px 4px  
4px rgb(89, 39, 29); -webkit-box-  
shadow:4px 4px 4px 4px rgb(89, 39, 29);  
box-shadow:4px 4px 4px 4px rgb(89, 39, 29)  
}
```

Background

The CSS property to change the background color of an element to YUV 52.8100, -11.7383, 31.7386 is called "background". The background property can be set on classes, ids or directly on the HTML element.

```
.background, #background, body{  
background: rgb(89, 39, 29) }
```

If only the background color should be changed can be used:

```
.background{ background-color: rgb(89, 39,  
29) }
```

This example shows the color as background, it is applied via the CSS property "background".

To optimize and compress your CSS code, you can use our [online CSS compressor and optimizer](#) based on csstidy. If you want to create a linear or radial gradient as background or border, check our [CSS Gradient Generator](#).

Hey! You found this booklet interesting? Support Converting Colors with the new Membership Option!

The pro membership hides all ads, plus gives you double the colors in the color bucket, and more awesome pro features!

[Learn more, Memberships starting at \\$2.50/m!](#)

**Follow me
on Twitter!**

@ConvertingColor