

Converting Colors

YUV(53.1720, -7.4798, 19.1432)

Have a look what the booklet for
YUV(53.1720, -7.4798, 19.1432)
contains.

YUV(53.1720, -7.4798, 19.1432)	3
<i>Conversions</i>	4
<i>Details</i>	6
<i>Harmonies</i>	12
<i>Previews</i>	24
<i>Color Blindness Simulation</i>	28
<i>CSS Examples</i>	31

Color

**YUV(53.1720, -7.4798,
19.1432)**

Conversions

Conversions Part 1

Format	Color
Hex	4B2D26
RGB	75, 45, 38
RGB Percent	29%, 18%, 15%
CMY	0.7059, 0.8235, 0.8510
CMYK	0.00, 0.40, 0.49, 0.71
HSL	11°, 33%, 22%
HSV	11°, 49%, 29%
XYZ	4.1899, 3.5126, 2.2909
YIQ	53.1720, 20.1270, 4.1830

Conversions

Conversions Part 2

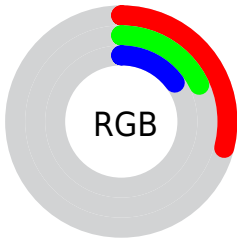
Format	Color
R_{YB}	75, 47, 38
Decimal	4926758
CIE Lab	21.99, 12.88, 10.29
CIE LCh	22, 16.482, 38.615
Yxy	3.5126, 0.4193, 0.3515
Android (android.graphics.Color)	4283116838 (0xFF4B2D26)
YUV	53.1720, -7.4798, 19.1432
Hunter-Lab	18.7418, 7.1069, 5.8721

Details

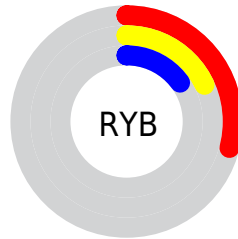
The YUV color **53.1720, -7.4798, 19.1432** is a dark color, and the websafe version is hex **663333**. A complement of this color would be **59.8280, 7.4798, -19.1432**, and the grayscale version is **53.0000, 0.0000, 0.0000**.

A 20% lighter version of the original color is **100.2540, -8.5062, 21.7022**, and **9.2690, -4.5696, 19.0581** is the 20% darker color. If you saturate the color by 10%, you get **48.7380, -9.2378, 23.0318**, and if you desaturate by 10%, it is **57.6060, -5.7218, 15.2545**.

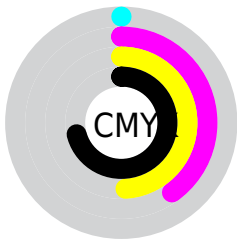
Distribution



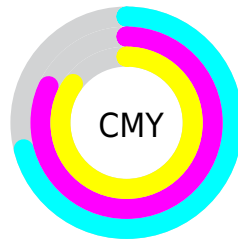
- Red (29%)
- Green (18%)
- Blue (15%)



- Red (29%)
- Yellow (18%)
- Blue (15%)



- Cyan (0%)
- Magenta (40%)
- Yellow (49%)
- Black (71%)



- Cyan (71%)
- Magenta (82%)
- Yellow (85%)

Brightness & Saturation Gradients

These gradients show how the YUV color 53.1720, -7.4798, 19.1432 changes by changing the brightness by 10 percent. The first figure shows a shift by +10% for each color and the second figure -10%.

Similar to the brightness gradients but the following saturation gradients show a change of the YUV color 53.1720, -7.4798, 19.1432 by changing the saturation by 10% instead.

■ 53.1720, -7.4798,
19.1432

■ 53.1720, -7.4798,
19.1432

■ 255.0000, 0.0000,
0.0000

■ 31.2750, -7.0376,
17.2988

■ 100.2540, -8.5062,
21.7022

■ 9.2690, -4.5696,
19.0581

■ 125.7380, -9.2378,
23.0318

■ 0.0000, 0.0000,
0.0000

■ 151.3360, -9.5326,
24.2613

■ 178.5210,
-10.1169, 24.9761

■ 205.8200,
-10.2643, 25.5909

■ 231.4280, -9.0850,

20.6726

■ 251.6430, -5.2470,
2.9441

■ 53.1720, -7.4798,
19.1432

■ 53.1720, -7.4798,
19.1432

■ 48.7380, -9.2378,
23.0318

■ 57.6060, -5.7218,
15.2545

■ 44.4180, -10.5591,
26.8204

■ 61.9260, -4.4005,
11.4659

■ 39.9840, -12.3171,
30.7090

■ 66.3600, -2.6425,
7.5773

■ 35.6640, -13.6384,
34.4977

■ 70.6800, -1.3212,
3.7886

■ 31.2300, -15.3964,
38.3863

■ 75.1140, 0.4368,
-0.1000

■ 30.6430, -15.1070,
38.9011

■ 79.4340, 1.7580,
-3.8886

■ 84.3410, 2.7899,
-8.1921

■ 88.7750, 4.5479,
-12.0807

■ 93.2090, 6.3060,
-15.9693

Harmonies

Analogous

The Analogous color harmony consists of three colors that are next to each other on the color wheel.



53.6650, -1.8068, 19.5878



53.1720, -7.4798, 19.1432



52.5150, -11.0999, 13.5803

Triad

The Triadic color harmony groups three colors that are evenly spaced from another and form a triangle on the color wheel.



53.1720, -7.4798, 19.1432



47.6190, -2.2772, -16.3289



52.1480, 12.2520, -9.7768

Complementary

The Complementary color scheme is a pair of colors which are on the opposite of each other on the color wheel.



53.1720, -7.4798, 19.1432



59.8280, 7.4798, -19.1432

Split Complementary

Split-complementary colors differ from the complementary color scheme. The scheme consists of three colors, the original color and two neighbors of the complement color.



47.4020, 13.6058, -24.0316



53.1720, -7.4798, 19.1432



44.6050, 5.6177, -28.5946

Square

The Square scheme is like the rectangle color scheme, but the four colors are evenly spaced on the color wheel.



53.1720, -7.4798, 19.1432



49.7900, -8.2775, -5.0778



43.4670, 11.6018, -34.6126



54.0250, 8.8617, 4.3631

Rectangle

The Rectangle color scheme consists of four colors that form a rectangle on the color wheel.



53.1720, -7.4798, 19.1432



51.9550, -11.8098, 7.9325



43.4670, 11.6018, -34.6126



50.6420, 12.9945, -14.5950

Sweetspot

The Sweet Spot groups the original color and five complimentary colors.



53.1720, -7.4798, 19.1432



88.2460, -3.0793, 7.6773



52.4830, 7.6499, 19.7474



42.9790, -1.4686, 4.4034



176.0000, 0.0000, 0.0000



48.0000, 0.0000, 0.0000

Same Dimension

The Same Dimension uses a secret algorithm to generate beautiful new colors.



53.1720, -7.4798, 19.1432



63.5000, -11.5855, 29.3795



63.7380, -12.6888, 9.8768



35.7830, -0.8790, 1.9443



41.6510, -20.5339, 52.9261



94.0110, -46.3474, 119.2624

Inverse Universe

The Inverse Universe completely reimagines the original color for something new.



59.8280, 7.4798, -19.1432



73.5000, 11.5855, -29.3795



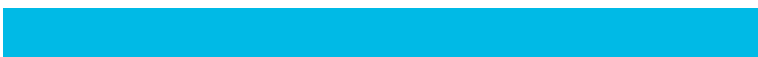
49.2620, 12.6888, -9.8768



36.8040, 0.5896, -2.4591



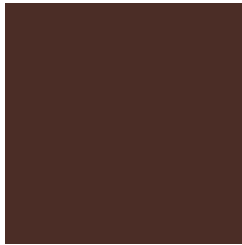
60.3490, 20.5339, -52.9261



135.4020, 46.6368, -118.7476

Previews

White Background



This preview shows how the YUV color 53.1720, -7.4798, 19.1432 looks on a white background.

Color Contrast Check

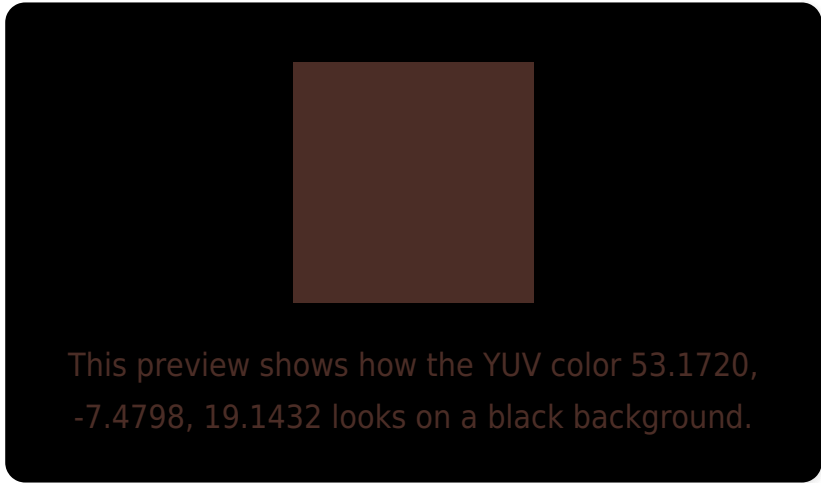
Large Text (above 18pt) WCAG AA ✓ Pass

Any Text WCAG AA ✓ Pass

Large Text (above 18pt) WCAG AAA ✓ Pass

Any Text WCAG AAA ✓ Pass

Black Background



Color Contrast Check

Large Text (above 18pt) WCAG AA × Fail

Any Text WCAG AA × Fail

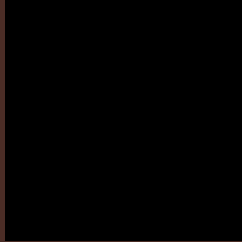
Large Text (above 18pt) WCAG AAA × Fail

Any Text WCAG AAA × Fail

If you want to check with other color combinations, try the [Color Contrast Checker](#).

YUV 53.1720, -7.4798, 19.1432

Background



This preview shows how black text looks on a background with the YUV color 53.1720, -7.4798, 19.1432.



This preview shows how white text looks on a background with the YUV color 53.1720, -7.4798,

Color Blindness Simulation

Color vision deficiency is a very complex topic, and I could not describe the different causes any better than Wikipedia does, so if you want to learn more, you should check out their [article about color blindness](#).

Dichromacy



Original Color

53.1720, -7.4798, 19.1432

Protanopia

52.9420, -5.3944, 3.5589

Deuteranopia

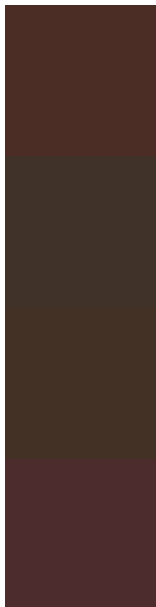
52.9920, -7.8841, 8.7770



Tritanopia

53.9100, -3.4066, 19.3729

Trichromacy



Original Color

53.1720, -7.4798, 19.1432

Protanomaly

53.1600, -5.9949, 9.5067

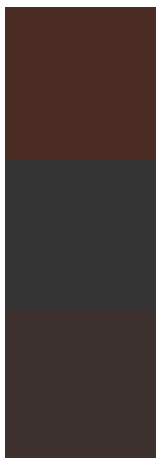
Deuteranomaly

53.0140, -7.8949, 12.2657

Tritanomaly

53.5680, -4.7170, 19.6729

Monochromacy



Original Color

53.1720, -7.4798, 19.1432

Achromatopsia

53.0000, 0.0000, 0.0000

Achromatomaly

53.0610, -2.4951, 6.9625

CSS Examples

Text

The CSS property to change the color of the text to YUV 53.1720, -7.4798, 19.1432 is called "color". The color property can be set on classes, ids or directly on the HTML element.

This example shows how text in the color `rgb(75, 45, 38)` looks like.

```
.text, #text, p{  
    color:rgb(75, 45, 38)  
}
```

If you want to add a text shadow in that color use the text-shadow property, you can generate a text shadow directly with our [CSS Text Shadow Generator](#).

Here you see how black text with a 4 pixel rgb(75, 45, 38) colored shadow looks like.

```
.shadow{ text-shadow: 4px 4px 2px rgb(75, 45, 38) }
```

Border

The CSS property to change the border of an element to YUV 53.1720, -7.4798, 19.1432 is called "border". The border property can be set on classes, ids or directly on the HTML element.

This example shows the color as border, it can be applied via the CSS property "border" or "border-color".

```
.border, #border, table{ border:4px solid rgb(75, 45, 38) }
```


If only the border color should be changed use the property `border-color`.

```
.border{ border-color:rgb(75, 45, 38) }
```

If you want to add a box shadow in that color use:

Here you see how a box with a 4 pixel `rgb(75, 45, 38)` colored shadow looks like.

```
.boxshadow{ -moz-box-shadow:4px 4px 4px  
4px rgb(75, 45, 38); -webkit-box-  
shadow:4px 4px 4px 4px rgb(75, 45, 38);  
box-shadow:4px 4px 4px 4px rgb(75, 45, 38)  
}
```

Background

The CSS property to change the background color of an element to YUV 53.1720, -7.4798, 19.1432 is called "background". The background property can be set on classes, ids or directly on the HTML element.

```
.background, #background, body{  
background: rgb(75, 45, 38) }
```

If only the background color should be changed can be used:

```
.background{ background-color: rgb(75, 45,  
38) }
```

This example shows the color as background, it is applied via the CSS property "background".

To optimize and compress your CSS code, you can use our [online CSS compressor and optimizer](#) based on csstidy. If you want to create a linear or radial gradient as background or border, check our [CSS Gradient Generator](#).

Hey! You found this booklet interesting? Support Converting Colors with the new Membership Option!

The pro membership hides all ads, plus gives you double the colors in the color bucket, and more awesome pro features!

[Learn more, Memberships starting at \\$2.50/m!](#)

**Follow me
on Twitter!**

@ConvertingColor