

Converting Colors

YUV(53.5630, -7.1796, 16.1692)

Have a look what the booklet for
YUV(53.5630, -7.1796, 16.1692)
contains.

YUV(53.5630, -7.1796, 16.1692)	3
<i>Conversions</i>	4
<i>Details</i>	6
<i>Harmonies</i>	12
<i>Previews</i>	24
<i>Color Blindness Simulation</i>	28
<i>CSS Examples</i>	31

Color

**YUV(53.5630, -7.1796,
16.1692)**

Conversions

Conversions Part 1

Format	Color
Hex	482F27
RGB	72, 47, 39
RGB Percent	28%, 18%, 15%
CMY	0.7176, 0.8157, 0.8471
CMYK	0.00, 0.35, 0.46, 0.72
HSL	15°, 30%, 22%
HSV	15°, 46%, 28%
XYZ	4.0552, 3.5572, 2.3923
YIQ	53.5630, 17.4680, 2.8120

Conversions

Conversions Part 2

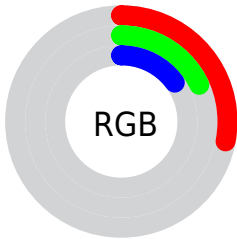
Format	Color
R_{YB}	72, 50, 39
Decimal	4730663
CIE Lab	22.15, 10.27, 9.76
CIE LCh	22, 14.171, 43.527
Yxy	3.5572, 0.4053, 0.3556
Android (android.graphics.Color)	4282920743 (0xFF482F27)
YUV	53.5630, -7.1796, 16.1692
Hunter-Lab	18.8606, 5.3731, 5.6819

Details

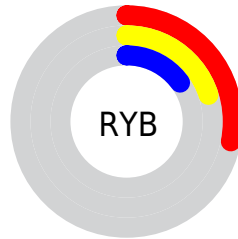
The YUV color **53.5630, -7.1796, 16.1692** is a dark color, and the websafe version is hex **663333**. A complement of this color would be **57.4370, 7.1796, -16.1692**, and the grayscale version is **54.0000, 0.0000, 0.0000**.

A 20% lighter version of the original color is **100.6450, -8.2060, 18.7283**, and **8.3720, -4.1274, 17.2138** is the 20% darker color. If you saturate the color by 10%, you get **49.8300, -8.7902, 19.4431**, and if you desaturate by 10%, it is **57.2960, -5.5689, 12.8954**.

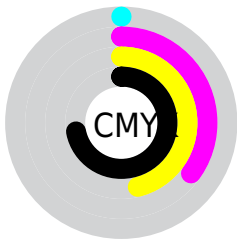
Distribution



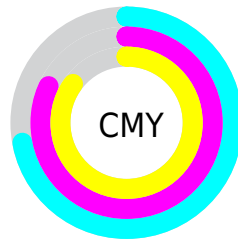
- Red (28%)
- Green (18%)
- Blue (15%)



- Red (28%)
- Yellow (20%)
- Blue (15%)



- Cyan (0%)
- Magenta (35%)
- Yellow (46%)
- Black (72%)



- Cyan (72%)
- Magenta (82%)
- Yellow (85%)

Brightness & Saturation Gradients

These gradients show how the YUV color 53.5630, -7.1796, 16.1692 changes by changing the brightness by 10 percent. The first figure shows a shift by +10% for each color and the second figure -10%.

Similar to the brightness gradients but the following saturation gradients show a change of the YUV color 53.5630, -7.1796, 16.1692 by changing the saturation by 10% instead.

■ 53.5630, -7.1796,
16.1692

■ 53.5630, -7.1796,
16.1692

■ 255.0000, 0.0000,
0.0000

■ 32.0790, -6.4479,
14.8397

■ 100.6450, -8.2060,
18.7283

■ 8.3720, -4.1274,
17.2138

■ 125.8300, -8.7902,
19.4431

■ 0.0000, 0.0000,
0.0000

■ 151.4280, -9.0850,
20.6726

■ 178.7270, -9.2324,
21.2874

■ 206.0260, -9.3798,
21.9022

■ 232.7160, -9.2270,

19.5431

253.0450, -4.9522,
1.7145

53.5630, -7.1796,
16.1692

53.5630, -7.1796,
16.1692

49.8300, -8.7902,
19.4431

57.2960, -5.5689,
12.8954

45.5100, -10.1114,
23.2317

61.6160, -4.2477,
9.1068

41.6630, -12.1589,
26.6055

65.4630, -2.2003,
5.7329

37.3430, -13.4801,
30.3942

69.7830, -0.8790,
1.9443

33.6100, -15.0907,
33.6680

73.5160, 0.7316,
-1.3295

■ 31.5070, -15.5330,
35.5124

■ 77.8360, 2.0529,
-5.1182

■ 81.5690, 3.6635,
-8.3920

■ 86.0030, 5.4215,
-12.2806

■ 89.7360, 7.0322,
-15.5545

Harmonies

Analogous

The Analogous color harmony consists of three colors that are next to each other on the color wheel.



54.1270, -2.5276, 17.4286



53.5630, -7.1796, 16.1692



52.5470, -9.6367, 10.9213

Triad

The Triadic color harmony groups three colors that are evenly spaced from another and form a triangle on the color wheel.



53.5630, -7.1796, 16.1692



48.6730, -0.8248, -15.4992



52.6000, 10.0572, -5.7882

Complementary

The Complementary color scheme is a pair of colors which are on the opposite of each other on the color wheel.



53.5630, -7.1796, 16.1692



57.4370, 7.1796, -16.1692

Split Complementary

Split-complementary colors differ from the complementary color scheme. The scheme consists of three colors, the original color and two neighbors of the complement color.



50.1640, 11.2581, -17.6838



53.5630, -7.1796, 16.1692



47.2250, 5.3121, -23.8763

Square

The Square scheme is like the rectangle color scheme, but the four colors are evenly spaced on the color wheel.



53.5630, -7.1796, 16.1692



50.8330, -6.8197, -5.9925



47.3650, 9.6801, -24.8761



54.4550, 6.6777, 4.8630

Rectangle

The Rectangle color scheme consists of four colors that form a rectangle on the color wheel.



53.5630, -7.1796, 16.1692



52.4000, -10.0572, 5.7882



47.3650, 9.6801, -24.8761



52.3930, 10.6523, -9.9917

Sweetspot

The Sweet Spot groups the original color and five complimentary colors.



53.5630, -7.1796, 16.1692



86.6480, -2.7845, 6.4477



51.7170, 6.0555, 17.7882



43.5660, -1.7580, 3.8886



176.0000, 0.0000, 0.0000



48.0000, 0.0000, 0.0000

Same Dimension

The Same Dimension uses a secret algorithm to generate beautiful new colors.



53.5630, -7.1796, 16.1692



65.1790, -11.4272, 25.2760



62.9550, -11.8098, 7.9325



33.7830, -0.8790, 1.9443



43.6890, -21.5387, 48.5077



100.1580, -49.3779, 111.2404

Inverse Universe

The Inverse Universe completely reimagines the original color for something new.



57.4370, 7.1796, -16.1692



71.4080, 11.1379, -25.7908



48.0450, 11.8098, -7.9325



34.2170, 0.8790, -1.9443



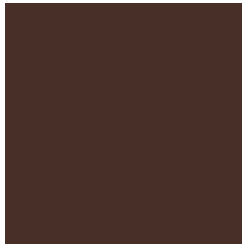
55.3110, 21.5387, -48.5077



126.8420, 49.3779, -111.2404

Previews

White Background



This preview shows how the YUV color 53.5630, -7.1796, 16.1692 looks on a white background.

Color Contrast Check

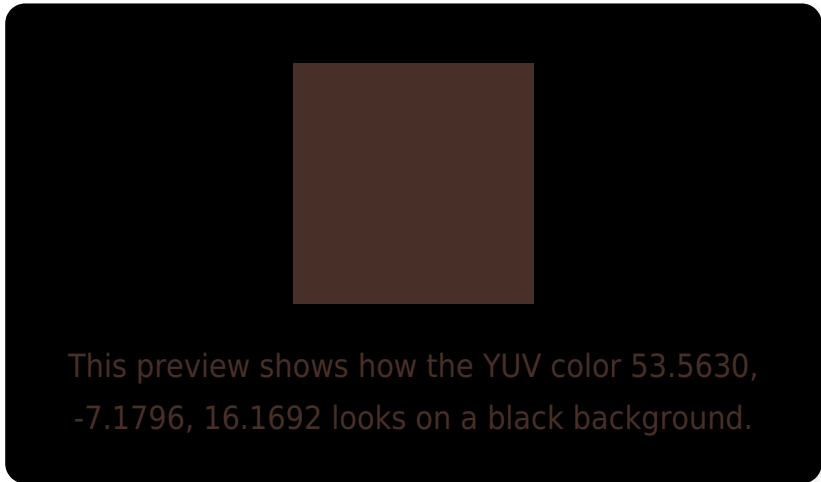
Large Text (above 18pt) WCAG AA ✓ Pass

Any Text WCAG AA ✓ Pass

Large Text (above 18pt) WCAG AAA ✓ Pass

Any Text WCAG AAA ✓ Pass

Black Background



Color Contrast Check

Large Text (above 18pt) WCAG AA × Fail

Any Text WCAG AA × Fail

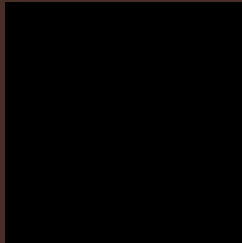
Large Text (above 18pt) WCAG AAA × Fail

Any Text WCAG AAA × Fail

If you want to check with other color combinations, try the [Color Contrast Checker](#).

YUV 53.5630, -7.1796, 16.1692

Background



This preview shows how black text looks on a background with the YUV color 53.5630, -7.1796, 16.1692.

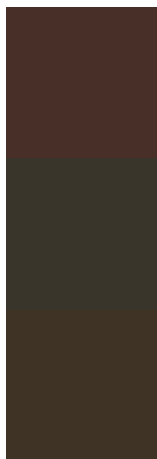


This preview shows how white text looks on a background with the YUV color 53.5630, -7.1796,

Color Blindness Simulation

Color vision deficiency is a very complex topic, and I could not describe the different causes any better than Wikipedia does, so if you want to learn more, you should check out their [article about color blindness](#).

Dichromacy



Original Color

53.5630, -7.1796, 16.1692

Protanopia

52.9420, -5.3944, 3.5589

Deuteranopia

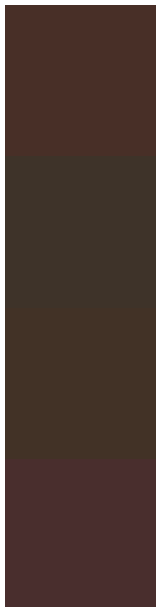
53.1060, -7.4473, 8.6770



Tritanopia

54.4150, -2.6696, 16.2990

Trichromacy



Original Color

53.5630, -7.1796, 16.1692

Protanomaly

53.1490, -5.9895, 7.7623

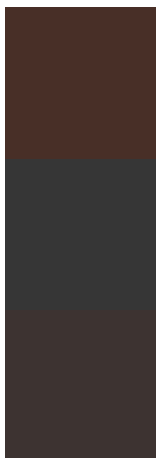
Deuteranomaly

53.4160, -7.6001, 11.0362

Tritanomaly

53.9590, -4.4168, 16.6990

Monochromacy



Original Color

53.5630, -7.1796, 16.1692

Achromatopsia

54.0000, 0.0000, 0.0000

Achromatomaly

53.7620, -2.3477, 6.3477

CSS Examples

Text

The CSS property to change the color of the text to YUV 53.5630, -7.1796, 16.1692 is called "color". The color property can be set on classes, ids or directly on the HTML element.

This example shows how text in the color `rgb(72, 47, 39)` looks like.

```
.text, #text, p{  
    color:rgb(72, 47, 39)  
}
```

If you want to add a text shadow in that color use the text-shadow property, you can generate a text shadow directly with our [CSS Text Shadow Generator](#).

Here you see how black text with a 4 pixel rgb(72, 47, 39) colored shadow looks like.

```
.shadow{ text-shadow: 4px 4px 2px rgb(72, 47, 39) }
```

Border

The CSS property to change the border of an element to YUV 53.5630, -7.1796, 16.1692 is called "border". The border property can be set on classes, ids or directly on the HTML element.

This example shows the color as border, it can be applied via the CSS property "border" or "border-color".

```
.border, #border, table{ border:4px solid rgb(72, 47, 39) }
```


If only the border color should be changed use the property `border-color`.

```
.border{ border-color:rgb(72, 47, 39) }
```

If you want to add a box shadow in that color use:

Here you see how a box with a 4 pixel `rgb(72, 47, 39)` colored shadow looks like.

```
.boxshadow{ -moz-box-shadow:4px 4px 4px  
4px rgb(72, 47, 39); -webkit-box-  
shadow:4px 4px 4px 4px rgb(72, 47, 39);  
box-shadow:4px 4px 4px 4px rgb(72, 47, 39)  
}
```

Background

The CSS property to change the background color of an element to YUV 53.5630, -7.1796, 16.1692 is called "background". The background property can be set on classes, ids or directly on the HTML element.

```
.background, #background, body{  
background: rgb(72, 47, 39) }
```

If only the background color should be changed can be used:

```
.background{ background-color: rgb(72, 47,  
39) }
```

This example shows the color as background, it is applied via the CSS property "background".

To optimize and compress your CSS code, you can use our [online CSS compressor and optimizer](#) based on csstidy. If you want to create a linear or radial gradient as background or border, check our [CSS Gradient Generator](#).

Hey! You found this booklet interesting? Support Converting Colors with the new Membership Option!

The pro membership hides all ads, plus gives you double the colors in the color bucket, and more awesome pro features!

[Learn more, Memberships starting at \\$2.50/m!](#)

**Follow me
on Twitter!**

@ConvertingColor