

# Converting Colors

YUV(53.6010, -8.1843, 11.7509)

Have a look what the booklet for  
YUV(53.6010, -8.1843, 11.7509)  
contains.

<b>YUV(53.6010, -8.1843, 11.7509)</b> .....	3
<b><i>Conversions</i></b> .....	4
<b><i>Details</i></b> .....	6
<b><i>Harmonies</i></b> .....	12
<b><i>Previews</i></b> .....	24
<b><i>Color Blindness Simulation</i></b> .....	28
<b><i>CSS Examples</i></b> .....	31

# Color

**YUV(53.6010, -8.1843,  
11.7509)**

# Conversions

## Conversions Part 1

<b>Format</b>	<b>Color</b>
Hex	433225
RGB	67, 50, 37
RGB Percent	26%, 20%, 15%
CMY	0.7373, 0.8039, 0.8549
CMYK	0.00, 0.25, 0.45, 0.74
HSL	26°, 29%, 20%
HSV	26°, 45%, 26%
XYZ	3.7893, 3.6081, 2.2470
YIQ	53.6010, 14.3050, -0.4390

# Conversions

## Conversions Part 2

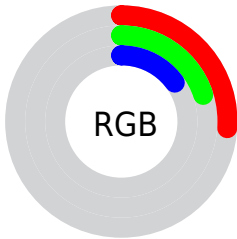
<b>Format</b>	<b>Color</b>
<b>RYB</b>	67, 60, 37
Decimal	4403749
CIELab	22.33, 5.59, 11.23
CIElCh	22, 12.543, 63.541
Yxy	3.6081, 0.3929, 0.3741
Android (android.graphics.Color)	4282593829 (0xFF433225)
YUV	53.6010, -8.1843, 11.7509
Hunter-Lab	18.9949, 2.3676, 6.2828

# Details

The YUV color **53.6010, -8.1843, 11.7509** is a dark color, and the websafe version is hex **333333**. A complement of this color would be **50.3990, 8.1843, -11.7509**, and the grayscale version is **54.0000, 0.0000, 0.0000**.

A 20% lighter version of the original color is **100.3840, -9.0633, 13.6952**, and **9.2250, -4.5479, 12.0807** is the 20% darker color. If you saturate the color by 10%, you get **50.4550, -10.0843, 14.5100**, and if you desaturate by 10%, it is **56.7470, -6.2843, 8.9919**.

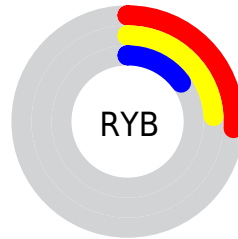
# Distribution



Red (26%)

Green (20%)

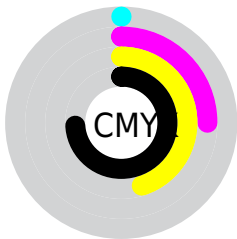
Blue (15%)



Red (26%)

Yellow (24%)

Blue (15%)

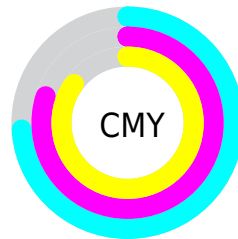


Cyan (0%)

Magenta (25%)

Yellow (45%)

Black (74%)



Cyan (74%)

Magenta (80%)

Yellow (85%)

# Brightness & Saturation Gradients

These gradients show how the YUV color 53.6010, -8.1843, 11.7509 changes by changing the brightness by 10 percent. The first figure shows a shift by +10% for each color and the second figure -10%.

Similar to the brightness gradients but the following saturation gradients show a change of the YUV color 53.6010, -8.1843, 11.7509 by changing the saturation by 10% instead.



■ 53.6010, -8.1843,  
11.7509

■ 53.6010, -8.1843,  
11.7509

■ 255.0000, 0.0000,  
0.0000

■ 32.0030, -7.8895,  
10.5214

■ 100.3840, -9.0633,  
13.6952

■ 9.2250, -4.5479,  
12.0807

■ 125.5690, -9.6475,  
14.4100

■ 0.0000, 0.0000,  
0.0000

■ 151.4550,  
-10.0843, 14.5100

■ 178.0530,  
-10.3791, 15.7395

■ 205.9390,  
-10.8159, 15.8395

■ 234.2380,

-10.9633, 16.4543

■ 253.2900, -6.5520,  
1.4997

■ 53.6010, -8.1843,  
11.7509

■ 53.6010, -8.1843,  
11.7509

■ 50.4550, -10.0843,  
14.5100

■ 56.7470, -6.2843,  
8.9919

■ 47.4230, -11.5475,  
17.1690

■ 59.7790, -4.8210,  
6.3328

■ 44.8640, -13.7370,  
19.4133

■ 62.3380, -2.6316,  
4.0886

■ 41.7180, -15.6370,  
22.1723

■ 65.4840, -0.7316,  
1.3295

■ 38.6860, -17.1002,  
24.8314

■ 68.6300, 1.1684,  
-1.4295

■ 37.0560, -18.2686,  
26.2609

■ 71.6620, 2.6316,  
-4.0886

■ 74.8080, 4.5317,  
-6.8476

■ 77.3670, 6.7211,  
-9.0919

■ 80.3990, 8.1843,  
-11.7509

# Harmonies

## Analogous

The Analogous color harmony consists of three colors that are next to each other on the color wheel.



54.1330, -4.9956, 15.6694



53.6010, -8.1843, 11.7509



52.7420, -8.7468, 5.4883

# Triad

The Triadic color harmony groups three colors that are evenly spaced from another and form a triangle on the color wheel.



53.6010, -8.1843, 11.7509



49.4600, 2.2382, -17.9434



54.5470, 7.1253, 1.2743

# Complementary

The Complementary color scheme is a pair of colors which are on the opposite of each other on the color wheel.



53.6010, -8.1843, 11.7509



50.3990, 8.1843, -11.7509

# Split Complementary

Split-complementary colors differ from the complementary color scheme. The scheme consists of three colors, the original color and two neighbors of the complement color.



52.7630, 9.4838, -8.5622



53.6010, -8.1843, 11.7509



48.7030, 7.0484, -20.7875

# Square

The Square scheme is like the rectangle color scheme, but the four colors are evenly spaced on the color wheel.



53.6010, -8.1843, 11.7509



50.5380, -2.7302, -10.9958



50.7080, 9.5110, -17.2839



54.9780, 3.4618, 9.6663



# Rectangle

The Rectangle color scheme consists of four colors that form a rectangle on the color wheel.



53.6010, -8.1843, 11.7509



51.9370, -7.8569, 0.0553



50.7080, 9.5110, -17.2839



54.0520, 7.8624, -1.7996

# Sweetspot

The Sweet Spot groups the original color and five complimentary colors.



53.6010, -8.1843, 11.7509



81.5230, -3.2158, 4.8033



47.9080, 3.0034, 16.7437



39.8540, -1.9000, 2.7590



171.0000, 0.0000, 0.0000



43.0000, 0.0000, 0.0000



# Same Dimension

The Same Dimension uses a secret algorithm to generate beautiful new colors.



53.6010, -8.1843, 11.7509



65.7930, -12.7159, 18.5985



62.4060, -12.5252, 4.0289



31.4840, -0.7316, 1.3295



53.6570, -26.4529, 38.0118



123.9150, -61.0901, 87.7745



# Inverse Universe

The Inverse Universe completely reimagines the original color for something new.



50.3990, 8.1843, -11.7509



60.6200, 13.0053, -18.0837



41.5940, 12.5252, -4.0289



31.5160, 0.7316, -1.3295



43.3430, 26.4529, -38.0118

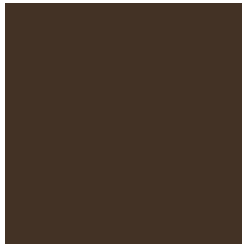


100.0850, 61.0901, -87.7745



# Previews

## White Background



This preview shows how the YUV color 53.6010, -8.1843, 11.7509 looks on a white background.

## Color Contrast Check

Large Text (above 18pt) WCAG AA ✓ Pass

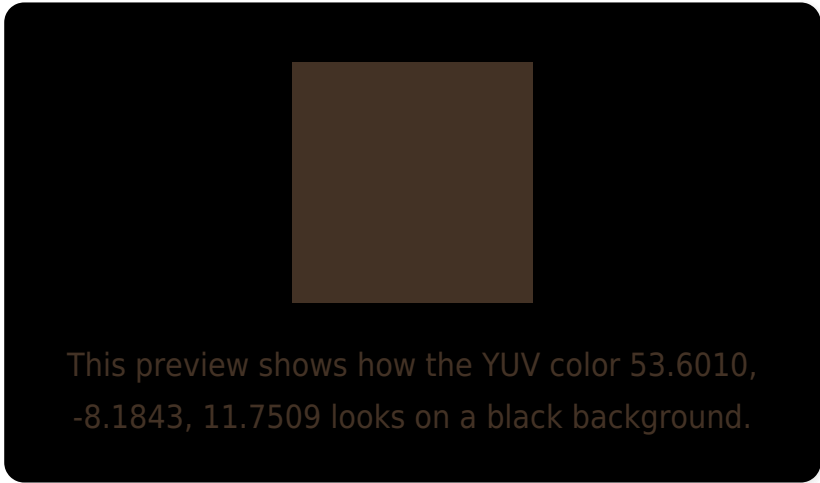
Any Text WCAG AA ✓ Pass

Large Text (above 18pt) WCAG AAA ✓ Pass

Any Text WCAG AAA ✓ Pass



# Black Background



## Color Contrast Check

Large Text (above 18pt) WCAG AA × Fail

Any Text WCAG AA × Fail

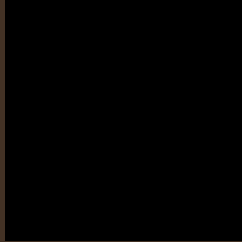
Large Text (above 18pt) WCAG AAA × Fail

Any Text WCAG AAA × Fail

If you want to check with other color combinations, try the [Color Contrast Checker](#).

**YUV 53.6010, -8.1843, 11.7509**

## **Background**



This preview shows how black text looks on a background with the YUV color 53.6010, -8.1843, 11.7509.



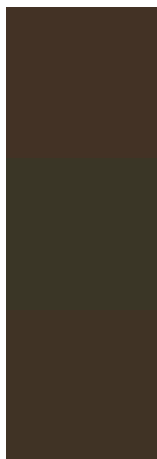
This preview shows how white text looks on a background with the YUV color 53.6010, -8.1843,



# Color Blindness Simulation

Color vision deficiency is a very complex topic, and I could not describe the different causes any better than Wikipedia does, so if you want to learn more, you should check out their [article about color blindness](#).

## Dichromacy



### Original Color

53.6010, -8.1843, 11.7509

### Protanopia

53.3720, -7.5784, 4.0588

### Deuteranopia

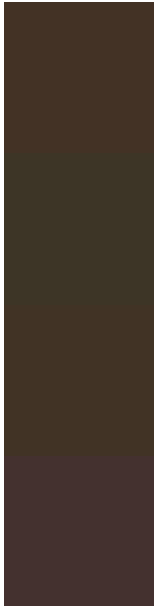
53.2910, -8.0315, 9.3918



## Tritanopia

54.4360, -1.2009, 11.8956

# Trichromacy



## Original Color

53.6010, -8.1843, 11.7509

## Protanomaly

53.6820, -7.7312, 6.4179

## Deuteranomaly

53.5900, -8.1789, 10.0066

## Tritanomaly

54.4530, -3.6743, 11.8807

# Monochromacy



## Original Color

53.6010, -8.1843, 11.7509

## Achromatopsia

54.0000, 0.0000, 0.0000

## Achromatomaly

54.2240, -3.0684, 4.1886

# CSS Examples

## Text

The CSS property to change the color of the text to YUV 53.6010, -8.1843, 11.7509 is called "color". The color property can be set on classes, ids or directly on the HTML element.

This example shows how text in the color `rgb(67, 50, 37)` looks like.

```
.text, #text, p{  
    color:rgb(67, 50, 37)  
}
```

If you want to add a text shadow in that color use the text-shadow property, you can generate a text shadow directly with our [CSS Text Shadow Generator](#).

Here you see how black text with a 4 pixel rgb(67, 50, 37) colored shadow looks like.

```
.shadow{ text-shadow: 4px 4px 2px rgb(67, 50, 37) }
```

## Border

The CSS property to change the border of an element to YUV 53.6010, -8.1843, 11.7509 is called "border". The border property can be set on classes, ids or directly on the HTML element.

This example shows the color as border, it can be applied via the CSS property "border" or "border-color".

```
.border, #border, table{ border:4px solid rgb(67, 50, 37) }
```



If only the border color should be changed use the property border-color.

```
.border{ border-color:rgb(67, 50, 37) }
```

If you want to add a box shadow in that color use:

Here you see how a box with a 4 pixel rgb(67, 50, 37) colored shadow looks like.

```
.boxshadow{ -moz-box-shadow:4px 4px 4px  
4px rgb(67, 50, 37); -webkit-box-  
shadow:4px 4px 4px 4px rgb(67, 50, 37);  
box-shadow:4px 4px 4px 4px rgb(67, 50, 37)  
}
```

# Background

The CSS property to change the background color of an element to YUV 53.6010, -8.1843, 11.7509 is called "background". The background property can be set on classes, ids or directly on the HTML element.

```
.background, #background, body{  
background: rgb(67, 50, 37) }
```

If only the background color should be changed can be used:

```
.background{ background-color: rgb(67, 50,  
37) }
```

This example shows the color as background, it is applied via the CSS property "background".

To optimize and compress your CSS code, you can use our [online CSS compressor and optimizer](#) based on csstidy. If you want to create a linear or radial gradient as background or border, check our [CSS Gradient Generator](#).

Hey! You found this booklet interesting? Support Converting Colors with the new Membership Option!

The pro membership hides all ads, plus gives you double the colors in the color bucket, and more awesome pro features!

**[Learn more, Memberships starting at \\$2.50/m!](#)**

**Follow me  
on Twitter!**

@ConvertingColor