

Converting Colors

YUV(56.1770, -8.4683, 9.4918)

Have a look what the booklet for
YUV(56.1770, -8.4683, 9.4918)
contains.

YUV(56.1770, -8.4683, 9.4918)	3
<i>Conversions</i>	4
<i>Details</i>	6
<i>Harmonies</i>	12
<i>Previews</i>	24
<i>Color Blindness Simulation</i>	28
<i>CSS Examples</i>	31

Color

**YUV(56.1770, -8.4683,
9.4918)**

Conversions

Conversions Part 1

Format	Color
Hex	433627
RGB	67, 54, 39
RGB Percent	26%, 21%, 15%
CMY	0.7373, 0.7882, 0.8471
CMYK	0.00, 0.19, 0.42, 0.74
HSL	32°, 26%, 21%
HSV	32°, 42%, 26%
XYZ	4.0001, 3.9781, 2.4765
YIQ	56.1770, 12.5630, -1.9090

Conversions

Conversions Part 2

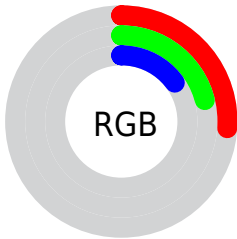
Format	Color
RYB	63, 67, 39
Decimal	4404775
CIELab	23.60, 3.23, 11.61
CIELCh	24, 12.050, 74.431
Yxy	3.9781, 0.3826, 0.3805
Android (android.graphics.Color)	4282594855 (0xFF433627)
YUV	56.1770, -8.4683, 9.4918
Hunter-Lab	19.9452, 0.8950, 6.5999

Details

The YUV color **56.1770, -8.4683, 9.4918** is a dark color, and the websafe version is hex **333333**. A complement of this color would be **49.8230, 8.4683, -9.4918**, and the grayscale version is **56.0000, 0.0000, 0.0000**.

A 20% lighter version of the original color is **103.5470, -9.6367, 10.9213**, and **12.7470, -6.2843, 8.9919** is the 20% darker color. If you saturate the color by 10%, you get **53.6180, -10.6577, 11.7360**, and if you desaturate by 10%, it is **58.7360, -6.2788, 7.2475**.

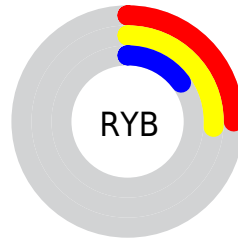
Distribution



Red (26%)

Green (21%)

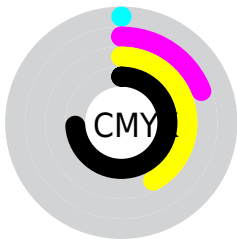
Blue (15%)



Red (25%)

Yellow (26%)

Blue (15%)

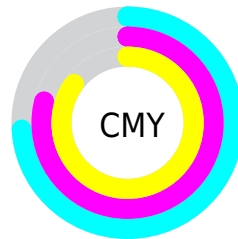


Cyan (0%)

Magenta (19%)

Yellow (42%)

Black (74%)



Cyan (74%)

Magenta (79%)

Yellow (85%)

Brightness & Saturation Gradients

These gradients show how the YUV color 56.1770, -8.4683, 9.4918 changes by changing the brightness by 10 percent. The first figure shows a shift by +10% for each color and the second figure -10%.

Similar to the brightness gradients but the following saturation gradients show a change of the YUV color 56.1770, -8.4683, 9.4918 by changing the saturation by 10% instead.

■ 56.1770, -8.4683,
9.4918

■ 56.1770, -8.4683,
9.4918

255.0000, 0.0000,
0.0000

■ 34.6930, -7.7366,
8.1622

■ 103.5470, -9.6367,
10.9213

■ 12.7470, -6.2843,
8.9919

■ 128.7320,
-10.2209, 11.6360

■ 0.0000, 0.0000,
0.0000

■ 154.1450, -9.9315,
12.1508

■ 181.3300,
-10.5157, 12.8656

■ 209.2160,
-10.9525, 12.9656

■ 237.2160,

-10.9525, 12.9656

253.6320, -5.2416,
1.1997

56.1770, -8.4683,
9.4918

56.1770, -8.4683,
9.4918

53.6180, -10.6577,
11.7360

58.7360, -6.2788,
7.2475

51.1730, -12.4103,
13.8803

61.1810, -4.5262,
5.1033

48.6140, -14.5997,
16.1245

63.7400, -2.3368,
2.8590

46.0550, -16.7891,
18.3688

66.2990, -0.1474,
0.6148

43.0230, -18.2523,
21.0278

69.4450, 1.7526,
-2.1443

■ 41.1650, -20.2943,
22.6573

■ 71.8900, 3.5052,
-4.2885

■ 74.4490, 5.6946,
-6.5328

■ 77.0080, 7.8841,
-8.7770

■ 79.4530, 9.6367,
-10.9213

Harmonies

Analogous

The Analogous color harmony consists of three colors that are next to each other on the color wheel.



56.7800, -6.3005, 14.2249



56.1770, -8.4683, 9.4918



55.2470, -8.0098, 2.4144

Triad

The Triadic color harmony groups three colors that are evenly spaced from another and form a triangle on the color wheel.



56.1770, -8.4683, 9.4918



51.9160, 3.9854, -18.3433



57.2270, 5.8041, 5.0629

Complementary

The Complementary color scheme is a pair of colors which are on the opposite of each other on the color wheel.



56.1770, -8.4683, 9.4918



49.8230, 8.4683, -9.4918

Split Complementary

Split-complementary colors differ from the complementary color scheme. The scheme consists of three colors, the original color and two neighbors of the complement color.



56.5570, 8.5994, -4.8735



56.1770, -8.4683, 9.4918



51.9420, 7.9166, -19.2431

Square

The Square scheme is like the rectangle color scheme, but the four colors are evenly spaced on the color wheel.



56.1770, -8.4683, 9.4918



52.9830, -0.9776, -13.1401



54.0290, 9.3527, -13.1804



57.5330, 1.7092, 11.8106

Rectangle

The Rectangle color scheme consists of four colors that form a rectangle on the color wheel.



56.1770, -8.4683, 9.4918



54.8550, -6.8305, -2.5038



54.0290, 9.3527, -13.1804



56.8460, 6.9779, 1.8891

Sweetspot

The Sweet Spot groups the original color and five complimentary colors.



56.1770, -8.4683, 9.4918



82.1100, -3.5052, 4.2885



48.8540, 1.5510, 15.9140



40.4410, -2.1894, 2.2442



171.0000, 0.0000, 0.0000



43.0000, 0.0000, 0.0000

Same Dimension

The Same Dimension uses a secret algorithm to generate beautiful new colors.



56.1770, -8.4683, 9.4918



70.2440, -13.4313, 14.6950



63.5090, -12.0829, 2.1846



32.0710, -1.0210, 0.8147



59.5270, -29.3468, 32.8638



137.4160, -67.7461, 75.9342

Inverse Universe

The Inverse Universe completely reimagines the original color for something new.



49.8230, 8.4683, -9.4918



59.7560, 13.4313, -14.6950



42.4910, 12.0829, -2.1846



30.9290, 1.0210, -0.8147



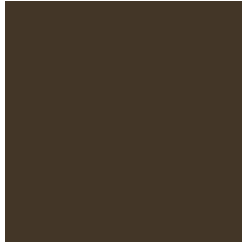
37.4730, 29.3468, -32.8638



86.5840, 67.7461, -75.9342

Previews

White Background



This preview shows how the YUV color 56.1770, -8.4683, 9.4918 looks on a white background.

Color Contrast Check

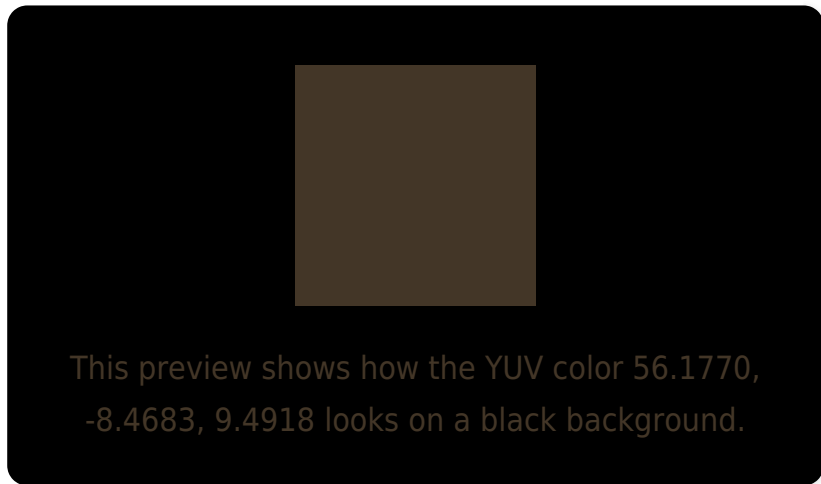
Large Text (above 18pt) WCAG AA ✓ Pass

Any Text WCAG AA ✓ Pass

Large Text (above 18pt) WCAG AAA ✓ Pass

Any Text WCAG AAA ✓ Pass

Black Background



Color Contrast Check

Large Text (above 18pt) WCAG AA × Fail

Any Text WCAG AA × Fail

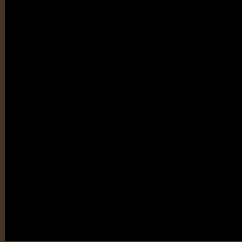
Large Text (above 18pt) WCAG AAA × Fail

Any Text WCAG AAA × Fail

If you want to check with other color combinations, try the [Color Contrast Checker](#).

YUV 56.1770, -8.4683, 9.4918

Background



This preview shows how black text looks on a background with the YUV color 56.1770, -8.4683, 9.4918.



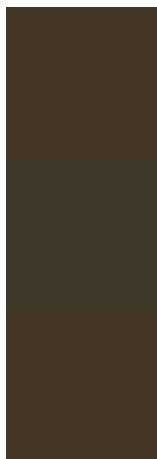
This preview shows how white text looks on a background with the YUV color 56.1770, -8.4683,

9.4918.

Color Blindness Simulation

Color vision deficiency is a very complex topic, and I could not describe the different causes any better than Wikipedia does, so if you want to learn more, you should check out their [article about color blindness](#).

Dichromacy



Original Color

56.1770, -8.4683, 9.4918

Protanopia

55.6710, -7.7258, 4.6735

Deuteranopia

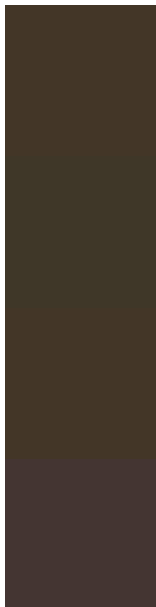
56.1770, -8.4683, 9.4918



Tritanopia

57.5390, -0.7587, 10.0513

Trichromacy



Original Color

56.1770, -8.4683, 9.4918

Protanomaly

55.6820, -7.7312, 6.4179

Deuteranomaly

56.1770, -8.4683, 9.4918

Tritanomaly

57.1430, -3.5215, 9.5216

Monochromacy



Original Color

56.1770, -8.4683, 9.4918

Achromatopsia

56.0000, 0.0000, 0.0000

Achromatomaly

55.9250, -2.9210, 3.5738

CSS Examples

Text

The CSS property to change the color of the text to YUV 56.1770, -8.4683, 9.4918 is called "color". The color property can be set on classes, ids or directly on the HTML element.

This example shows how text in the color `rgb(67, 54, 39)` looks like.

```
.text, #text, p{  
    color:rgb(67, 54, 39)  
}
```

If you want to add a text shadow in that color use the text-shadow property, you can generate a text shadow directly with our [CSS Text Shadow Generator](#).

Here you see how black text with a 4 pixel rgb(67, 54, 39) colored shadow looks like.

```
.shadow{ text-shadow: 4px 4px 2px rgb(67, 54, 39) }
```

Border

The CSS property to change the border of an element to YUV 56.1770, -8.4683, 9.4918 is called "border". The border property can be set on classes, ids or directly on the HTML element.

This example shows the color as border, it can be applied via the CSS property "border" or "border-color".

```
.border, #border, table{ border:4px solid rgb(67, 54, 39) }
```


If only the border color should be changed use the property `border-color`.

```
.border{ border-color:rgb(67, 54, 39) }
```

If you want to add a box shadow in that color use:

Here you see how a box with a 4 pixel `rgb(67, 54, 39)` colored shadow looks like.

```
.boxshadow{ -moz-box-shadow:4px 4px 4px  
4px rgb(67, 54, 39); -webkit-box-  
shadow:4px 4px 4px 4px rgb(67, 54, 39);  
box-shadow:4px 4px 4px 4px rgb(67, 54, 39)  
}
```

Background

The CSS property to change the background color of an element to YUV 56.1770, -8.4683, 9.4918 is called "background". The background property can be set on classes, ids or directly on the HTML element.

```
.background, #background, body{  
background: rgb(67, 54, 39) }
```

If only the background color should be changed can be used:

```
.background{ background-color: rgb(67, 54,  
39) }
```

This example shows the color as background, it is applied via the CSS property "background".

To optimize and compress your CSS code, you can use our [online CSS compressor and optimizer](#) based on csstidy. If you want to create a linear or radial gradient as background or border, check our [CSS Gradient Generator](#).

Hey! You found this booklet interesting? Support Converting Colors with the new Membership Option!

The pro membership hides all ads, plus gives you double the colors in the color bucket, and more awesome pro features!

[Learn more, Memberships starting at \\$2.50/m!](#)

**Follow me
on Twitter!**

@ConvertingColor