

Converting Colors

YUV(56.3820, -2.6533, 11.0660)

Have a look what the booklet for
YUV(56.3820, -2.6533, 11.0660)
contains.

YUV(56.3820, -2.6533, 11.0660)	3
<i>Conversions</i>	4
<i>Details</i>	6
<i>Harmonies</i>	12
<i>Previews</i>	24
<i>Color Blindness Simulation</i>	28
<i>CSS Examples</i>	31

Color

**YUV(56.3820, -2.6533,
11.0660)**

Conversions

Conversions Part 1

Format	Color
Hex	453333
RGB	69, 51, 51
RGB Percent	27%, 20%, 20%
CMY	0.7294, 0.8000, 0.8000
CMYK	0.00, 0.26, 0.26, 0.73
HSL	0°, 15%, 24%
HSV	0°, 26%, 27%
XYZ	4.2356, 3.8719, 3.6561
YIQ	56.3820, 10.7280, 3.8160

Conversions

Conversions Part 2

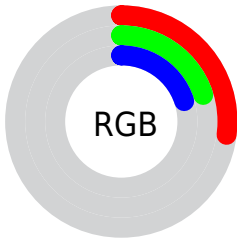
Format	Color
R_{YB}	69, 51, 51
Decimal	4535091
CIE Lab	23.24, 8.12, 3.14
CIE LCh	23, 8.701, 21.138
Yxy	3.8719, 0.3601, 0.3291
Android (android.graphics.Color)	4282725171 (0xFF453333)
YUV	56.3820, -2.6533, 11.0660
Hunter-Lab	19.6771, 3.9883, 2.7577

Details

The YUV color **56.3820, -2.6533, 11.0660** is a dark color, and the websafe version is hex **333333**. A complement of this color would be **63.6180, 2.6533, -11.0660**, and the grayscale version is **56.0000, 0.0000, 0.0000**.

A 20% lighter version of the original color is **103.2790, -3.0955, 12.9103**, and **11.5780, -3.2430, 13.5251** is the 20% darker color. If you saturate the color by 10%, you get **51.4750, -3.6852, 15.3694**, and if you desaturate by 10%, it is **61.2890, -1.6215, 6.7625**.

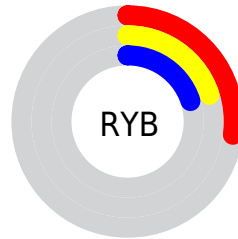
Distribution



 Red (27%)

 Green (20%)

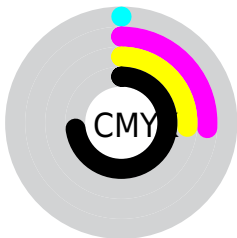
 Blue (20%)



 Red (27%)

 Yellow (20%)

 Blue (20%)

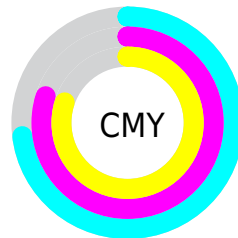


 Cyan (0%)

 Magenta (26%)

 Yellow (26%)

 Black (73%)



 Cyan (73%)

 Magenta (80%)

 Yellow (80%)

Brightness & Saturation Gradients

These gradients show how the YUV color 56.3820, -2.6533, 11.0660 changes by changing the brightness by 10 percent. The first figure shows a shift by +10% for each color and the second figure -10%.

Similar to the brightness gradients but the following saturation gradients show a change of the YUV color 56.3820, -2.6533, 11.0660 by changing the saturation by 10% instead.

■ 56.3820, -2.6533,
11.0660

■ 56.3820, -2.6533,
11.0660

255.0000, 0.0000,
0.0000

■ 34.7840, -2.3585,
9.8364

■ 103.2790, -3.0955,
12.9103

■ 11.5780, -3.2430,
13.5251

■ 128.2790, -3.0955,
12.9103

■ 0.0000, 0.0000,
0.0000

■ 154.5780, -3.2430,
13.5251

■ 181.4640, -3.6798,
13.6251

■ 208.8770, -3.3904,
14.1399

■ 237.1760, -3.5378,

14.7546

■ 56.3820, -2.6533,
11.0660

■ 56.3820, -2.6533,
11.0660

■ 51.4750, -3.6852,
15.3694

■ 61.2890, -1.6215,
6.7625

■ 46.5680, -4.7170,
19.6729

■ 66.1960, -0.5896,
2.4591

■ 41.6610, -5.7489,
23.9763

■ 71.1030, 0.4422,
-1.8443

■ 36.7540, -6.7807,
28.2797

■ 76.0100, 1.4741,
-6.1478

■ 32.5480, -7.6652,
31.9684

■ 80.9170, 2.5059,
-10.4512

■ 27.6410, -8.6970,
36.2718

■ 85.1230, 3.3904,
-14.1399

■ 22.7340, -9.7289,
40.5753

■ 90.0300, 4.4222,
-18.4433

■ 20.6310, -10.1711,
42.4196

■ 94.9370, 5.4541,
-22.7467

■ 99.8440, 6.4859,
-27.0502

Harmonies

Analogous

The Analogous color harmony consists of three colors that are next to each other on the color wheel.



56.5820, 0.6991, 9.1366



56.3820, -2.6533, 11.0660



55.8010, -4.8319, 9.8215

Triad

The Triadic color harmony groups three colors that are evenly spaced from another and form a triangle on the color wheel.



56.3820, -2.6533, 11.0660



53.7560, -3.3307, -5.0480



54.9650, 6.4263, -7.8623

Complementary

The Complementary color scheme is a pair of colors which are on the opposite of each other on the color wheel.



56.3820, -2.6533, 11.0660



63.6180, 2.6533, -11.0660

Split Complementary

Split-complementary colors differ from the complementary color scheme. The scheme consists of three colors, the original color and two neighbors of the complement color.



53.1170, 5.8583, -12.3806



56.3820, -2.6533, 11.0660



53.2330, -0.1149, -9.8513

Square

The Square scheme is like the rectangle color scheme, but the four colors are evenly spaced on the color wheel.



56.3820, -2.6533, 11.0660



54.5180, -5.6784, 1.2997



52.8350, 3.5323, -13.0103



55.4820, 5.6784, -1.2997

Rectangle

The Rectangle color scheme consists of four colors that form a rectangle on the color wheel.



56.3820, -2.6533, 11.0660



55.7360, -6.2788, 7.2475



52.8350, 3.5323, -13.0103



53.9540, 6.4317, -9.6067

Sweetspot

The Sweet Spot groups the original color and five complimentary colors.



56.3820, -2.6533, 11.0660



84.0930, -1.0318, 4.3034



58.4340, 5.2090, 9.2664



42.4950, -0.7370, 3.0739



173.0000, 0.0000, 0.0000



46.0000, 0.0000, 0.0000

Same Dimension

The Same Dimension uses a secret algorithm to generate beautiful new colors.



56.3820, -2.6533, 11.0660



70.0730, -3.9800, 16.5990



61.6650, -5.2578, 6.4328



33.1960, -0.5896, 2.4591



29.6010, -14.5933, 60.8629



67.8730, -33.4614, 139.5544

Inverse Universe

The Inverse Universe completely reimagines the original color for something new.



63.6180, 2.6533, -11.0660



80.9270, 3.9800, -16.5990



58.3350, 5.2578, -6.4328



34.8040, 0.5896, -2.4591



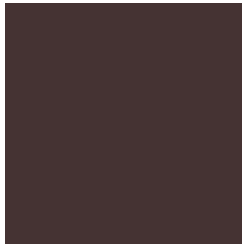
69.3990, 14.5933, -60.8629



159.1270, 33.4614, -139.5544

Previews

White Background



This preview shows how the YUV color 56.3820, -2.6533, 11.0660 looks on a white background.

Color Contrast Check

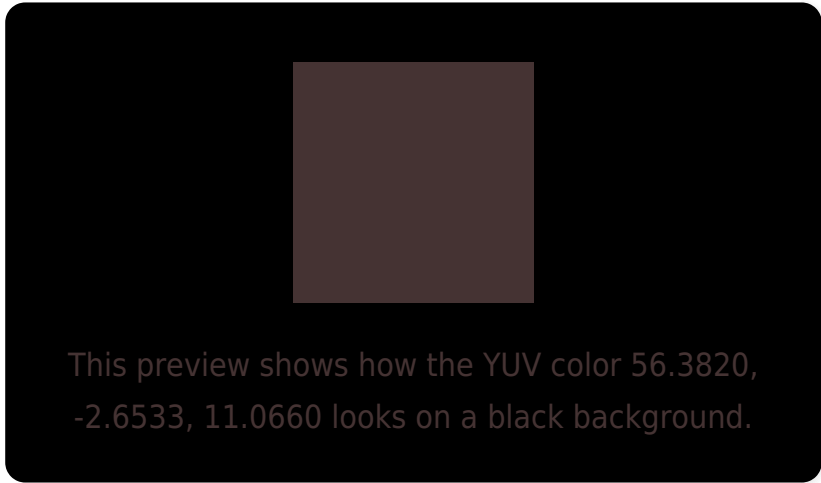
Large Text (above 18pt) WCAG AA ✓ Pass

Any Text WCAG AA ✓ Pass

Large Text (above 18pt) WCAG AAA ✓ Pass

Any Text WCAG AAA ✓ Pass

Black Background



Color Contrast Check

Large Text (above 18pt) WCAG AA × Fail

Any Text WCAG AA × Fail

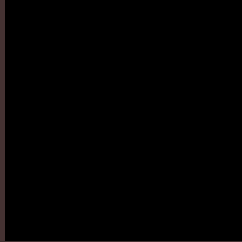
Large Text (above 18pt) WCAG AAA × Fail

Any Text WCAG AAA × Fail

If you want to check with other color combinations, try the [Color Contrast Checker](#).

YUV 56.3820, -2.6533, 11.0660

Background



This preview shows how black text looks on a background with the YUV color 56.3820, -2.6533, 11.0660.

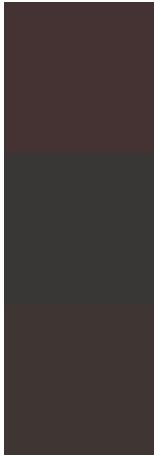


This preview shows how white text looks on a background with the YUV color 56.3820, -2.6533,

Color Blindness Simulation

Color vision deficiency is a very complex topic, and I could not describe the different causes any better than Wikipedia does, so if you want to learn more, you should check out their [article about color blindness](#).

Dichromacy



Original Color

56.3820, -2.6533, 11.0660

Protanopia

55.3700, -1.1684, 1.4295

Deuteranopia

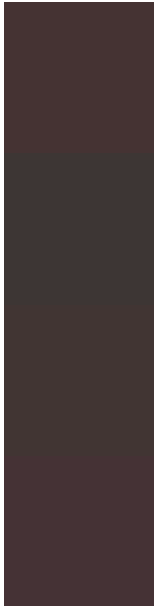
56.3490, -2.6371, 5.8329



Tritanopia

56.1370, -1.0535, 11.2809

Trichromacy



Original Color

56.3820, -2.6533, 11.0660

Protanomaly

55.8650, -1.9054, 4.5034

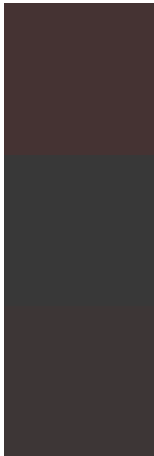
Deuteranomaly

56.3600, -2.6425, 7.5773

Tritanomaly

56.0230, -1.4903, 11.3808

Monochromacy



Original Color

56.3820, -2.6533, 11.0660

Achromatopsia

56.0000, 0.0000, 0.0000

Achromatomaly

56.0930, -1.0318, 4.3034

CSS Examples

Text

The CSS property to change the color of the text to YUV 56.3820, -2.6533, 11.0660 is called "color". The color property can be set on classes, ids or directly on the HTML element.

This example shows how text in the color `rgb(69, 51, 51)` looks like.

```
.text, #text, p{  
    color:rgb(69, 51, 51)  
}
```

If you want to add a text shadow in that color use the text-shadow property, you can generate a text shadow directly with our [CSS Text Shadow Generator](#).

Here you see how black text with a 4 pixel rgb(69, 51, 51) colored shadow looks like.

```
.shadow{ text-shadow: 4px 4px 2px rgb(69, 51, 51) }
```

Border

The CSS property to change the border of an element to YUV 56.3820, -2.6533, 11.0660 is called "border". The border property can be set on classes, ids or directly on the HTML element.

This example shows the color as border, it can be applied via the CSS property "border" or "border-color".

```
.border, #border, table{ border:4px solid rgb(69, 51, 51) }
```


If only the border color should be changed use the property border-color.

```
.border{ border-color:rgb(69, 51, 51) }
```

If you want to add a box shadow in that color use:

Here you see how a box with a 4 pixel rgb(69, 51, 51) colored shadow looks like.

```
.boxshadow{ -moz-box-shadow:4px 4px 4px  
4px rgb(69, 51, 51); -webkit-box-  
shadow:4px 4px 4px 4px rgb(69, 51, 51);  
box-shadow:4px 4px 4px 4px rgb(69, 51, 51)  
}
```

Background

The CSS property to change the background color of an element to YUV 56.3820, -2.6533, 11.0660 is called "background". The background property can be set on classes, ids or directly on the HTML element.

```
.background, #background, body{  
background: rgb(69, 51, 51) }
```

If only the background color should be changed can be used:

```
.background{ background-color: rgb(69, 51,  
51) }
```

This example shows the color as background, it is applied via the CSS property "background".

To optimize and compress your CSS code, you can use our [online CSS compressor and optimizer](#) based on csstidy. If you want to create a linear or radial gradient as background or border, check our [CSS Gradient Generator](#).

Hey! You found this booklet interesting? Support Converting Colors with the new Membership Option!

The pro membership hides all ads, plus gives you double the colors in the color bucket, and more awesome pro features!

[Learn more, Memberships starting at \\$2.50/m!](#)

**Follow me
on Twitter!**

@ConvertingColor