

Converting Colors

YUV(56.6680, -9.6963, 30.1092)

Have a look what the booklet for
YUV(56.6680, -9.6963, 30.1092)
contains.

YUV(56.6680, -9.6963, 30.1092)	3
<i>Conversions</i>	4
<i>Details</i>	6
<i>Harmonies</i>	12
<i>Previews</i>	24
<i>Color Blindness Simulation</i>	28
<i>CSS Examples</i>	31

Color

**YUV(56.6680, -9.6963,
30.1092)**

Conversions

Conversions Part 1

Format	Color
Hex	5B2B25
RGB	91, 43, 37
RGB Percent	36%, 17%, 15%
CMY	0.6431, 0.8314, 0.8549
CMYK	0.00, 0.53, 0.59, 0.64
HSL	7°, 42%, 25%
HSV	7°, 59%, 36%
XYZ	5.5122, 4.0855, 2.2483
YIQ	56.6680, 30.5340, 8.3100

Conversions

Conversions Part 2

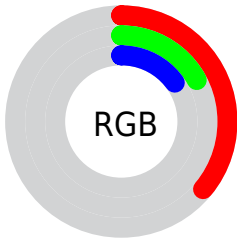
Format	Color
RYB	91, 44, 37
Decimal	5974821
CIELab	23.95, 21.33, 14.01
CIELCh	24, 25.522, 33.304
Yxy	4.0855, 0.4653, 0.3449
Android (android.graphics.Color)	4284164901 (0xFF5B2B25)
YUV	56.6680, -9.6963, 30.1092
Hunter-Lab	20.2126, 13.3070, 7.5537

Details

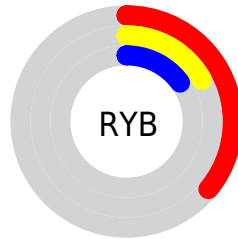
The YUV color **56.6680, -9.6963, 30.1092** is a dark color, and the websafe version is hex **663333**. A complement of this color would be **71.3320, 9.6963, -30.1092**, and the grayscale version is **57.0000, 0.0000, 0.0000**.

A 20% lighter version of the original color is **105.2340, -11.4544, 33.9978**, and **12.8570, -6.3385, 26.4354** is the 20% darker color. If you saturate the color by 10%, you get **50.9460, -11.3124, 35.1274**, and if you desaturate by 10%, it is **62.3900, -8.0803, 25.0910**.

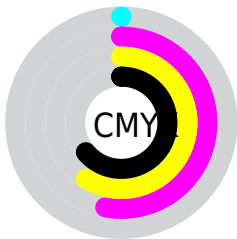
Distribution



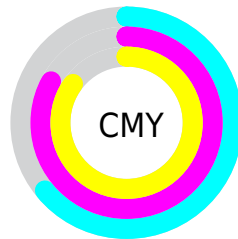
- Red (36%)
- Green (17%)
- Blue (15%)



- Red (36%)
- Yellow (17%)
- Blue (15%)



- Cyan (0%)
- Magenta (53%)
- Yellow (59%)
- Black (64%)



- Cyan (64%)
- Magenta (83%)
- Yellow (85%)

Brightness & Saturation Gradients

These gradients show how the YUV color 56.6680, -9.6963, 30.1092 changes by changing the brightness by 10 percent. The first figure shows a shift by +10% for each color and the second figure -10%.

Similar to the brightness gradients but the following saturation gradients show a change of the YUV color 56.6680, -9.6963, 30.1092 by changing the saturation by 10% instead.

■ 56.6680, -9.6963,
30.1092

■ 56.6680, -9.6963,
30.1092

■ 255.0000, 0.0000,
0.0000

■ 33.8850, -8.8173,
28.1649

■ 105.2340,
-11.4544, 33.9978

■ 12.8570, -6.3385,
26.4354

■ 131.0170,
-12.3334, 35.9421

■ 0.0000, 0.0000,
0.0000

■ 156.9140,
-12.7756, 37.7864

■ 184.0990,
-13.3598, 38.5012

■ 211.0990,
-13.3598, 38.5012

■ 230.7270, -9.2324,

21.2874

250.9420, -5.3944,
3.5589

56.6680, -9.6963,
30.1092

56.6680, -9.6963,
30.1092

50.9460, -11.3124,
35.1274

62.3900, -8.0803,
25.0910

45.2240, -12.9284,
40.1456

68.1120, -6.4642,
20.0728

39.5020, -14.5445,
45.1637

73.8340, -4.8482,
15.0546

33.7800, -16.1605,
50.1819

79.5560, -3.2321,
10.0364

33.0790, -16.3079,
50.7967

85.3920, -1.1793,
4.9182

■ 91.7010, 0.1474,
-0.6148

■ 97.4230, 1.7635,
-5.6330

■ 103.1450, 3.3795,
-10.6512

■ 108.8670, 4.9956,
-15.6694

Harmonies

Analogous

The Analogous color harmony consists of three colors that are next to each other on the color wheel.



57.3720, -0.6764, 30.3688



56.6680, -9.6963, 30.1092



56.1910, -16.3632, 21.7575

Triad

The Triadic color harmony groups three colors that are evenly spaced from another and form a triangle on the color wheel.



56.6680, -9.6963, 30.1092



48.2820, -4.5760, -25.6803



52.0520, 21.1734, -24.6016

Complementary

The Complementary color scheme is a pair of colors which are on the opposite of each other on the color wheel.



56.6680, -9.6963, 30.1092



71.3320, 9.6963, -30.1092

Split Complementary

Split-complementary colors differ from the complementary color scheme. The scheme consists of three colors, the original color and two neighbors of the complement color.



47.3550, 21.5170, -41.5303



56.6680, -9.6963, 30.1092



46.0550, 6.3819, -40.3902

Square

The Square scheme is like the rectangle color scheme, but the four colors are evenly spaced on the color wheel.



56.6680, -9.6963, 30.1092



52.7700, -14.6766, -5.9373



47.5200, 14.5336, -41.6750



58.3220, 15.1243, 2.3486

Rectangle

The Rectangle color scheme consists of four colors that form a rectangle on the color wheel.



56.6680, -9.6963, 30.1092



55.1640, -18.8149, 14.7652



47.5200, 14.5336, -41.6750



46.0500, 24.1324, -40.3858

Sweetspot

The Sweet Spot groups the original color and five complimentary colors.



56.6680, -9.6963, 30.1092



104.0400, -3.9637, 11.3659



58.7320, 13.4431, 28.2990



50.4740, -2.2057, 7.4773



186.0000, 0.0000, 0.0000



59.0000, 0.0000, 0.0000

Same Dimension

The Same Dimension uses a secret algorithm to generate beautiful new colors.



56.6680, -9.6963, 30.1092



64.1000, -14.8393, 46.3933



71.9300, -17.2205, 16.7244



43.0820, -1.0264, 2.5591



39.9340, -19.6875, 61.4479



86.1250, -42.4596, 132.3174

Inverse Universe

The Inverse Universe completely reimagines the original color for something new.



71.3320, 9.6963, -30.1092



86.9000, 14.8393, -46.3933



56.0700, 17.2205, -16.7244



43.9180, 1.0264, -2.5591



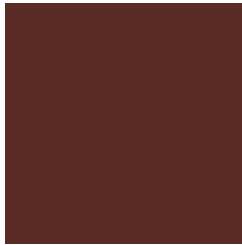
69.4790, 19.9769, -60.9331



150.8750, 42.4596, -132.3174

Previews

White Background



This preview shows how the YUV color 56.6680, -9.6963, 30.1092 looks on a white background.

Color Contrast Check

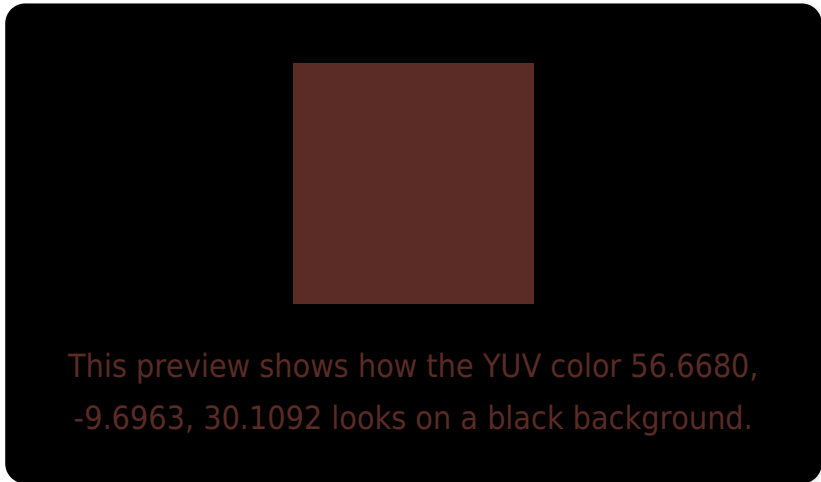
Large Text (above 18pt) WCAG AA ✓ Pass

Any Text WCAG AA ✓ Pass

Large Text (above 18pt) WCAG AAA ✓ Pass

Any Text WCAG AAA ✓ Pass

Black Background



Color Contrast Check

Large Text (above 18pt) WCAG AA × Fail

Any Text WCAG AA × Fail

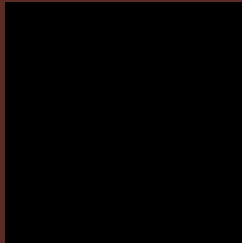
Large Text (above 18pt) WCAG AAA × Fail

Any Text WCAG AAA × Fail

If you want to check with other color combinations, try the [Color Contrast Checker](#).

YUV 56.6680, -9.6963, 30.1092

Background



This preview shows how black text looks on a background with the YUV color 56.6680, -9.6963, 30.1092.

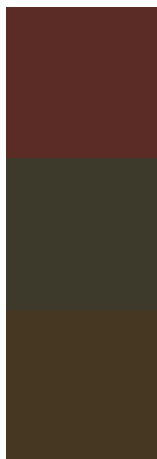


This preview shows how white text looks on a background with the YUV color 56.6680, -9.6963,

Color Blindness Simulation

Color vision deficiency is a very complex topic, and I could not describe the different causes any better than Wikipedia does, so if you want to learn more, you should check out their [article about color blindness](#).

Dichromacy



Original Color

56.6680, -9.6963, 30.1092

Protanopia

57.4860, -7.1416, 3.9588

Deuteranopia

57.2050, -10.9471, 11.2212



Tritanopia

56.9930, -5.9125, 29.8241

Trichromacy



Original Color

56.6680, -9.6963, 30.1092

Protanomaly

57.6120, -8.1897, 13.4953

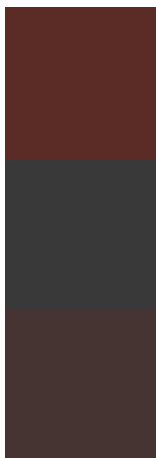
Deuteranomaly

57.3630, -10.5320, 18.0986

Tritanomaly

56.6510, -7.2229, 30.1241

Monochromacy



Original Color

56.6680, -9.6963, 30.1092

Achromatopsia

57.0000, 0.0000, 0.0000

Achromatomaly

56.8550, -3.3795, 10.6512

CSS Examples

Text

The CSS property to change the color of the text to YUV 56.6680, -9.6963, 30.1092 is called "color". The color property can be set on classes, ids or directly on the HTML element.

This example shows how text in the color `rgb(91, 43, 37)` looks like.

```
.text, #text, p{  
    color:rgb(91, 43, 37)  
}
```

If you want to add a text shadow in that color use the text-shadow property, you can generate a text shadow directly with our [CSS Text Shadow Generator](#).

Here you see how black text with a 4 pixel rgb(91, 43, 37) colored shadow looks like.

```
.shadow{ text-shadow: 4px 4px 2px rgb(91, 43, 37) }
```

Border

The CSS property to change the border of an element to YUV 56.6680, -9.6963, 30.1092 is called "border". The border property can be set on classes, ids or directly on the HTML element.

This example shows the color as border, it can be applied via the CSS property "border" or "border-color".

```
.border, #border, table{ border:4px solid rgb(91, 43, 37) }
```


If only the border color should be changed use the property border-color.

```
.border{ border-color:rgb(91, 43, 37) }
```

If you want to add a box shadow in that color use:

Here you see how a box with a 4 pixel rgb(91, 43, 37) colored shadow looks like.

```
.boxshadow{ -moz-box-shadow:4px 4px 4px  
4px rgb(91, 43, 37); -webkit-box-  
shadow:4px 4px 4px 4px rgb(91, 43, 37);  
box-shadow:4px 4px 4px 4px rgb(91, 43, 37)  
}
```

Background

The CSS property to change the background color of an element to YUV 56.6680, -9.6963, 30.1092 is called "background". The background property can be set on classes, ids or directly on the HTML element.

```
.background, #background, body{  
background: rgb(91, 43, 37) }
```

If only the background color should be changed can be used:

```
.background{ background-color: rgb(91, 43,  
37) }
```

This example shows the color as background, it is applied via the CSS property "background".

To optimize and compress your CSS code, you can use our [online CSS compressor and optimizer](#) based on csstidy. If you want to create a linear or radial gradient as background or border, check our [CSS Gradient Generator](#).

Hey! You found this booklet interesting? Support Converting Colors with the new Membership Option!

The pro membership hides all ads, plus gives you double the colors in the color bucket, and more awesome pro features!

[Learn more, Memberships starting at \\$2.50/m!](#)

**Follow me
on Twitter!**

@ConvertingColor