

Converting Colors

YUV(57.3570, -8.0640, 19.8579)

Have a look what the booklet for
YUV(57.3570, -8.0640, 19.8579)
contains.

YUV(57.3570, -8.0640, 19.8579)	3
Conversions	4
Details	6
Harmonies	12
Previews	24
Color Blindness Simulation	28
CSS Examples	31

Color

**YUV(57.3570, -8.0640,
19.8579)**

Conversions

Conversions Part 1

Format	Color
Hex	503129
RGB	80, 49, 41
RGB Percent	31%, 19%, 16%
CMY	0.6863, 0.8078, 0.8392
CMYK	0.00, 0.39, 0.49, 0.69
HSL	12°, 32%, 24%
HSV	12°, 49%, 31%
XYZ	4.8068, 4.0622, 2.6286
YIQ	57.3570, 21.0440, 4.0840

Conversions

Conversions Part 2

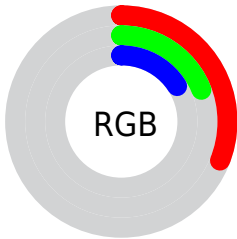
Format	Color
R_{YB}	80, 51, 41
Decimal	5255465
CIE Lab	23.88, 13.02, 10.95
CIE LCh	24, 17.014, 40.054
Yxy	4.0622, 0.4181, 0.3533
Android (android.graphics.Color)	4283445545 (0xFF503129)
YUV	57.3570, -8.0640, 19.8579
Hunter-Lab	20.1549, 7.3001, 6.3759

Details

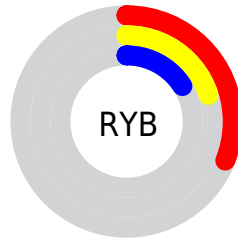
The YUV color **57.3570, -8.0640, 19.8579** is a dark color, and the websafe version is hex **663333**. A complement of this color would be **63.6430, 8.0640, -19.8579**, and the grayscale version is **57.0000, 0.0000, 0.0000**.

A 20% lighter version of the original color is **104.7380, -9.2378, 23.0318**, and **12.2260, -6.0274, 19.9728** is the 20% darker color. If you saturate the color by 10%, you get **52.9230, -9.8220, 23.7465**, and if you desaturate by 10%, it is **61.7910, -6.3060, 15.9693**.

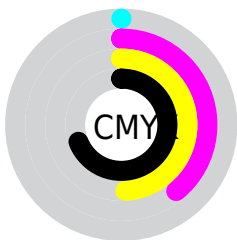
Distribution



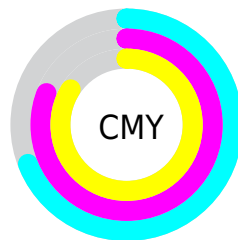
- Red (31%)
- Green (19%)
- Blue (16%)



- Red (31%)
- Yellow (20%)
- Blue (16%)



- Cyan (0%)
- Magenta (39%)
- Yellow (49%)
- Black (69%)



- Cyan (69%)
- Magenta (81%)
- Yellow (84%)

Brightness & Saturation Gradients

These gradients show how the YUV color 57.3570, -8.0640, 19.8579 changes by changing the brightness by 10 percent. The first figure shows a shift by +10% for each color and the second figure -10%.

Similar to the brightness gradients but the following saturation gradients show a change of the YUV color 57.3570, -8.0640, 19.8579 by changing the saturation by 10% instead.

■ 57.3570, -8.0640,
19.8579

■ 57.3570, -8.0640,
19.8579

■ 255.0000, 0.0000,
0.0000

■ 35.5740, -7.1850,
17.9136

■ 104.7380, -9.2378,
23.0318

■ 12.2260, -6.0274,
19.9728

■ 130.0370, -9.3852,
23.6466

■ 0.0000, 0.0000,
0.0000

■ 156.5210,
-10.1169, 24.9761

■ 183.7060,
-10.7011, 25.6908

■ 211.3040,
-10.9959, 26.9204

■ 234.8190, -8.7848,

17.6987

253.8600, -4.3680,
0.9998

57.3570, -8.0640,
19.8579

57.3570, -8.0640,
19.8579

52.9230, -9.8220,
23.7465

61.7910, -6.3060,
15.9693

47.9020, -11.2907,
28.1499

66.8120, -4.8373,
11.5659

43.4680, -13.0487,
32.0386

71.2460, -3.0793,
7.6773

39.0340, -14.8068,
35.9272

75.6800, -1.3212,
3.7886

34.0130, -16.2754,
40.3306

80.7010, 0.1474,
-0.6148

■ 33.3120, -16.4228,
40.9454

■ 85.1350, 1.9054,
-4.5034

■ 90.1560, 3.3741,
-8.9068

■ 94.5900, 5.1321,
-12.7954

■ 99.0240, 6.8902,
-16.6840

Harmonies

Analogous

The Analogous color harmony consists of three colors that are next to each other on the color wheel.



58.1490, -2.5385, 20.9173



57.3570, -8.0640, 19.8579



56.7000, -11.6841, 14.2951

Triad

The Triadic color harmony groups three colors that are evenly spaced from another and form a triangle on the color wheel.



57.3570, -8.0640, 19.8579



51.7220, -1.8349, -18.1732



56.5610, 12.5414, -9.2620

Complementary

The Complementary color scheme is a pair of colors which are on the opposite of each other on the color wheel.



57.3570, -8.0640, 19.8579



63.6430, 8.0640, -19.8579

Split Complementary

Split-complementary colors differ from the complementary color scheme. The scheme consists of three colors, the original color and two neighbors of the complement color.



51.5160, 14.0426, -24.1315



57.3570, -8.0640, 19.8579



48.7080, 6.0600, -30.4389

Square

The Square scheme is like the rectangle color scheme, but the four colors are evenly spaced on the color wheel.



57.3570, -8.0640, 19.8579



54.0780, -8.4195, -6.2074



47.3960, 12.6228, -35.4273



58.3240, 8.7143, 4.9779

Rectangle

The Rectangle color scheme consists of four colors that form a rectangle on the color wheel.



57.3570, -8.0640, 19.8579



55.8410, -12.2466, 8.0324



47.3960, 12.6228, -35.4273



55.0550, 13.2839, -14.0802

Sweetspot

The Sweet Spot groups the original color and five complimentary colors.



57.3570, -8.0640, 19.8579



95.5450, -3.2267, 8.2920



56.1950, 7.7919, 20.8770



48.1640, -2.0529, 5.1182



181.0000, 0.0000, 0.0000



54.0000, 0.0000, 0.0000

Same Dimension

The Same Dimension uses a secret algorithm to generate beautiful new colors.



57.3570, -8.0640, 19.8579



69.1690, -12.9013, 31.4238



68.5100, -13.5624, 10.0767



38.7830, -0.8790, 1.9443



43.7220, -21.5549, 53.7408



97.5440, -48.0892, 117.9179

Inverse Universe

The Inverse Universe completely reimagines the original color for something new.



63.6430, 8.0640, -19.8579



78.8310, 12.9013, -31.4238



52.4900, 13.5624, -10.0767



39.2170, 0.8790, -1.9443



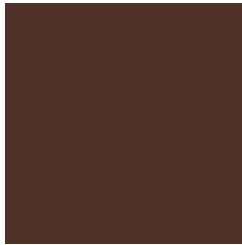
60.6910, 21.8443, -53.2260



134.4560, 48.0892, -117.9179

Previews

White Background



This preview shows how the YUV color 57.3570, -8.0640, 19.8579 looks on a white background.

Color Contrast Check

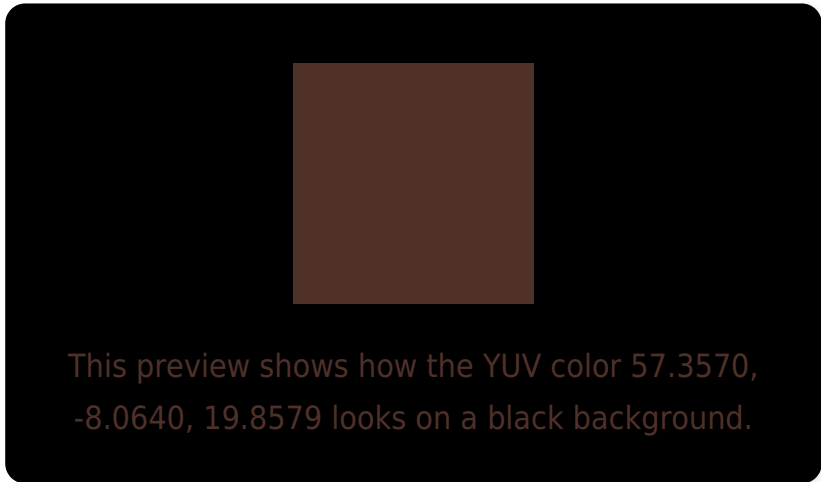
Large Text (above 18pt) WCAG AA ✓ Pass

Any Text WCAG AA ✓ Pass

Large Text (above 18pt) WCAG AAA ✓ Pass

Any Text WCAG AAA ✓ Pass

Black Background



Color Contrast Check

Large Text (above 18pt) WCAG AA × Fail

Any Text WCAG AA × Fail

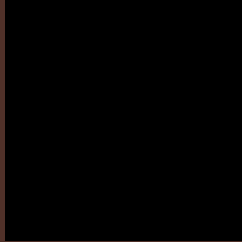
Large Text (above 18pt) WCAG AAA × Fail

Any Text WCAG AAA × Fail

If you want to check with other color combinations, try the [Color Contrast Checker](#).

YUV 57.3570, -8.0640, 19.8579

Background



This preview shows how black text looks on a background with the YUV color 57.3570, -8.0640, 19.8579.

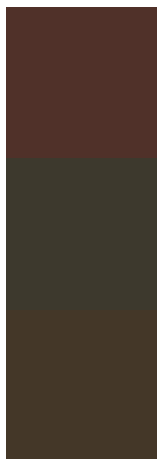


This preview shows how white text looks on a background with the YUV color 57.3570, -8.0640,

Color Blindness Simulation

Color vision deficiency is a very complex topic, and I could not describe the different causes any better than Wikipedia does, so if you want to learn more, you should check out their [article about color blindness](#).

Dichromacy



Original Color

57.3570, -8.0640, 19.8579

Protanopia

56.8280, -5.8312, 3.6588

Deuteranopia

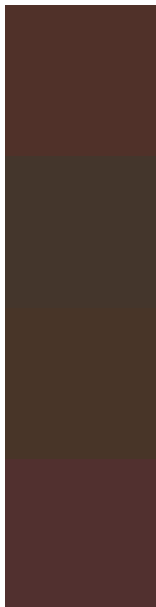
57.1770, -8.4683, 9.4918



Tritanopia

58.2090, -3.5540, 19.9877

Trichromacy



Original Color

57.3570, -8.0640, 19.8579

Protanomaly

57.0460, -6.4317, 9.6067

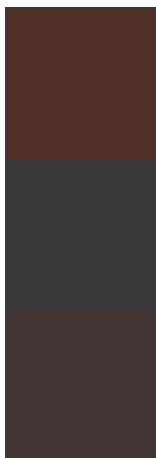
Deuteranomaly

57.1990, -8.4791, 12.9805

Tritanomaly

57.7530, -5.3012, 20.3876

Monochromacy



Original Color

57.3570, -8.0640, 19.8579

Achromatopsia

57.0000, 0.0000, 0.0000

Achromatomaly

56.9470, -2.9319, 7.0625

CSS Examples

Text

The CSS property to change the color of the text to YUV 57.3570, -8.0640, 19.8579 is called "color". The color property can be set on classes, ids or directly on the HTML element.

This example shows how text in the color `rgb(80, 49, 41)` looks like.

```
.text, #text, p{  
    color:rgb(80, 49, 41)  
}
```

If you want to add a text shadow in that color use the text-shadow property, you can generate a text shadow directly with our [CSS Text Shadow Generator](#).

Here you see how black text with a 4 pixel rgb(80, 49, 41) colored shadow looks like.

```
.shadow{ text-shadow: 4px 4px 2px rgb(80, 49, 41) }
```

Border

The CSS property to change the border of an element to YUV 57.3570, -8.0640, 19.8579 is called "border". The border property can be set on classes, ids or directly on the HTML element.

This example shows the color as border, it can be applied via the CSS property "border" or "border-color".

```
.border, #border, table{ border:4px solid rgb(80, 49, 41) }
```


If only the border color should be changed use the property border-color.

```
.border{ border-color:rgb(80, 49, 41) }
```

If you want to add a box shadow in that color use:

Here you see how a box with a 4 pixel rgb(80, 49, 41) colored shadow looks like.

```
.boxshadow{ -moz-box-shadow:4px 4px 4px  
4px rgb(80, 49, 41); -webkit-box-  
shadow:4px 4px 4px 4px rgb(80, 49, 41);  
box-shadow:4px 4px 4px 4px rgb(80, 49, 41)  
}
```

Background

The CSS property to change the background color of an element to YUV 57.3570, -8.0640, 19.8579 is called "background". The background property can be set on classes, ids or directly on the HTML element.

```
.background, #background, body{  
background: rgb(80, 49, 41) }
```

If only the background color should be changed can be used:

```
.background{ background-color: rgb(80, 49,  
41) }
```

This example shows the color as background, it is applied via the CSS property "background".

To optimize and compress your CSS code, you can use our [online CSS compressor and optimizer](#) based on csstidy. If you want to create a linear or radial gradient as background or border, check our [CSS Gradient Generator](#).

Hey! You found this booklet interesting? Support Converting Colors with the new Membership Option!

The pro membership hides all ads, plus gives you double the colors in the color bucket, and more awesome pro features!

[Learn more, Memberships starting at \\$2.50/m!](#)

**Follow me
on Twitter!**

@ConvertingColor