

Converting Colors

YUV(57.9820, -5.9071, 28.0798)

Have a look what the booklet for
YUV(57.9820, -5.9071, 28.0798)
contains.

YUV(57.9820, -5.9071, 28.0798)	3
<i>Conversions</i>	4
<i>Details</i>	6
<i>Harmonies</i>	12
<i>Previews</i>	24
<i>Color Blindness Simulation</i>	28
<i>CSS Examples</i>	31

Color

**YUV(57.9820, -5.9071,
28.0798)**

Conversions

Conversions Part 1

Format	Color
Hex	5A2C2E
RGB	90, 44, 46
RGB Percent	35%, 17%, 18%
CMY	0.6471, 0.8275, 0.8196
CMYK	0.00, 0.51, 0.49, 0.65
HSL	357°, 34%, 26%
HSV	357°, 51%, 35%
XYZ	5.6103, 4.1723, 3.0944
YIQ	57.9820, 26.7740, 10.3740

Conversions

Conversions Part 2

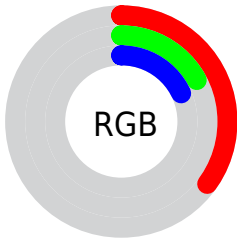
Format	Color
R_{YB}	90, 44, 46
Decimal	5909550
CIE _{Lab}	24.23, 21.26, 8.33
CIE _{LCh}	24, 22.836, 21.404
Yxy	4.1723, 0.4357, 0.3240
Android (android.graphics.Color)	4284099630 (0xFF5A2C2E)
YUV	57.9820, -5.9071, 28.0798
Hunter-Lab	20.4262, 13.2812, 5.3163

Details

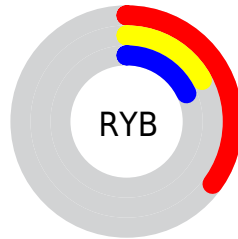
The YUV color **57.9820, -5.9071, 28.0798** is a dark color, and the websafe version is hex **663333**. A complement of this color would be **76.0180, 5.9071, -28.0798**, and the grayscale version is **58.0000, 0.0000, 0.0000**.

A 20% lighter version of the original color is **106.3630, -7.0810, 31.2536**, and **12.8570, -6.3385, 26.4354** is the 20% darker color. If you saturate the color by 10%, you get **51.6730, -7.2338, 33.6128**, and if you desaturate by 10%, it is **64.2910, -4.5805, 22.5468**.

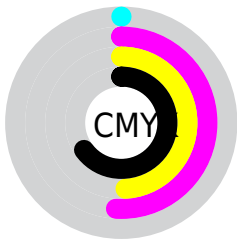
Distribution



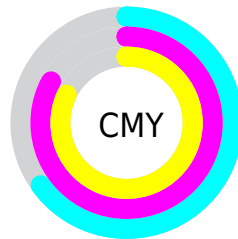
- Red (35%)
- Green (17%)
- Blue (18%)



- Red (35%)
- Yellow (17%)
- Blue (18%)



- Cyan (0%)
- Magenta (51%)
- Yellow (49%)
- Black (65%)



- Cyan (65%)
- Magenta (83%)
- Yellow (82%)

Brightness & Saturation Gradients

These gradients show how the YUV color 57.9820, -5.9071, 28.0798 changes by changing the brightness by 10 percent. The first figure shows a shift by +10% for each color and the second figure -10%.

Similar to the brightness gradients but the following saturation gradients show a change of the YUV color 57.9820, -5.9071, 28.0798 by changing the saturation by 10% instead.

■ 57.9820, -5.9071,
28.0798

■ 57.9820, -5.9071,
28.0798

■ 255.0000, 0.0000,
0.0000

■ 35.1990, -5.0281,
26.1355

■ 106.3630, -7.0810,
31.2536

■ 12.8570, -6.3385,
26.4354

■ 132.1460, -7.9600,
33.1980

■ 0.0000, 0.0000,
0.0000

■ 158.4450, -8.1074,
33.8127

■ 185.3420, -8.5496,
35.6571

■ 213.5270, -9.1338,
36.3718

■ 233.1550, -5.0064,

19.1581

252.8970, -0.4422,
1.8443

57.9820, -5.9071,
28.0798

57.9820, -5.9071,
28.0798

51.6730, -7.2338,
33.6128

64.2910, -4.5805,
22.5468

45.4780, -8.1237,
39.0458

70.4860, -3.6906,
17.1138

39.1690, -9.4503,
44.5788

76.7950, -2.3639,
11.5808

32.9740, -10.3402,
50.0118

82.9900, -1.4741,
6.1478

27.3660, -11.5194,
54.9300

89.2990, -0.1474,
0.6148

■ 95.6080, 1.1793,
-4.9182

■ 101.8030, 2.0691,
-10.3512

■ 108.1120, 3.3958,
-15.8842

■ 114.3070, 4.2856,
-21.3172

Harmonies

Analogous

The Analogous color harmony consists of three colors that are next to each other on the color wheel.



59.0230, 1.9607, 24.5358



57.9820, -5.9071, 28.0798



57.4130, -13.0216, 23.3168

Triad

The Triadic color harmony groups three colors that are evenly spaced from another and form a triangle on the color wheel.



57.9820, -5.9071, 28.0798



52.3220, -8.5397, -14.3144



50.0680, 20.1795, -32.5086

Complementary

The Complementary color scheme is a pair of colors which are on the opposite of each other on the color wheel.



57.9820, -5.9071, 28.0798



76.0180, 5.9071, -28.0798

Split Complementary

Split-complementary colors differ from the complementary color scheme. The scheme consists of three colors, the original color and two neighbors of the complement color.



47.7310, 17.8806, -41.8601



57.9820, -5.9071, 28.0798



45.5670, 3.1715, -37.3313

Square

The Square scheme is like the rectangle color scheme, but the four colors are evenly spaced on the color wheel.



57.9820, -5.9071, 28.0798



54.7000, -15.1351, 1.1401



46.7220, 11.4761, -40.9752



57.7940, 15.8776, -5.9583

Rectangle

The Rectangle color scheme consists of four colors that form a rectangle on the color wheel.



57.9820, -5.9071, 28.0798



56.9840, -15.7681, 17.5540



46.7220, 11.4761, -40.9752



46.6540, 21.3696, -40.9156

Sweetspot

The Sweet Spot groups the original color and five complimentary colors.



57.9820, -5.9071, 28.0798



105.0830, -2.5059, 10.4512



62.4000, 13.6068, 22.4512



51.4030, -1.1847, 6.6626



186.0000, 0.0000, 0.0000



59.0000, 0.0000, 0.0000

Same Dimension

The Same Dimension uses a secret algorithm to generate beautiful new colors.



57.9820, -5.9071, 28.0798



67.5710, -9.1555, 43.3492



70.0810, -12.8579, 17.4690



42.6090, -0.3002, 2.9739



33.4600, -14.0308, 67.1256



72.0030, -30.5675, 144.7024

Inverse Universe

The Inverse Universe completely reimagines the original color for something new.



57.9820, -5.9071, 28.0798



67.5710, -9.1555, 43.3492



63.9190, 12.8579, -17.4690



42.6090, -0.3002, 2.9739



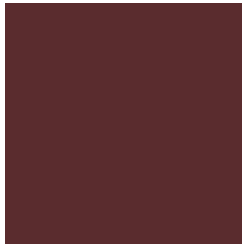
33.4600, -14.0308, 67.1256



72.0030, -30.5675, 144.7024

Previews

White Background



This preview shows how the YUV color 57.9820, -5.9071, 28.0798 looks on a white background.

Color Contrast Check

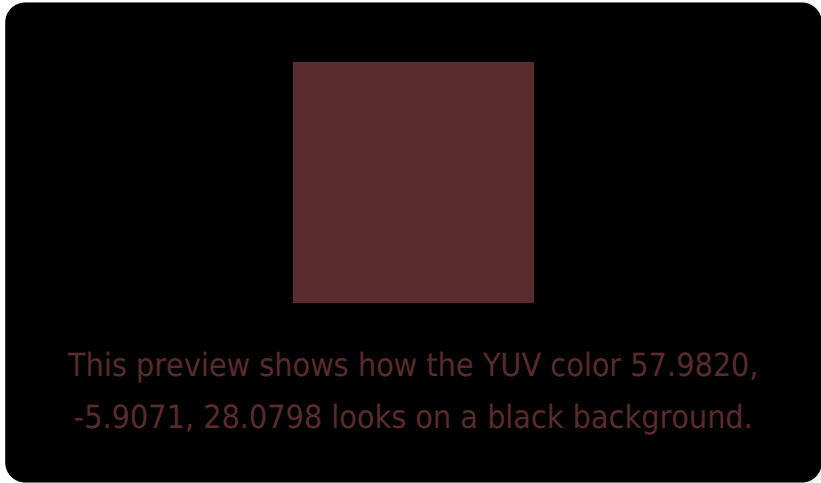
Large Text (above 18pt) WCAG AA ✓ Pass

Any Text WCAG AA ✓ Pass

Large Text (above 18pt) WCAG AAA ✓ Pass

Any Text WCAG AAA ✓ Pass

Black Background



Color Contrast Check

Large Text (above 18pt) WCAG AA × Fail

Any Text WCAG AA × Fail

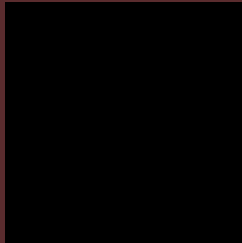
Large Text (above 18pt) WCAG AAA × Fail

Any Text WCAG AAA × Fail

If you want to check with other color combinations, try the [Color Contrast Checker](#).

YUV 57.9820, -5.9071, 28.0798

Background



This preview shows how black text looks on a background with the YUV color 57.9820, -5.9071, 28.0798.



This preview shows how white text looks on a background with the YUV color 57.9820, -5.9071,

Color Blindness Simulation

Color vision deficiency is a very complex topic, and I could not describe the different causes any better than Wikipedia does, so if you want to learn more, you should check out their [article about color blindness](#).

Dichromacy



Original Color

57.9820, -5.9071, 28.0798

Protanopia

58.3270, -2.6262, 2.3442

Deuteranopia

58.5190, -7.1579, 9.1918



Tritanopia

58.0960, -5.4703, 27.9798

Trichromacy



Original Color

57.9820, -5.9071, 28.0798

Protanomaly

58.3390, -4.1111, 11.9807

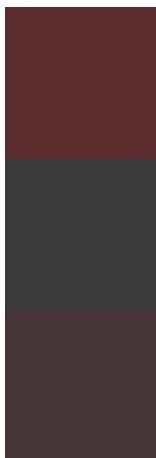
Deuteranomaly

58.6770, -6.7428, 16.0693

Tritanomaly

58.0960, -5.4703, 27.9798

Monochromacy



Original Color

57.9820, -5.9071, 28.0798

Achromatopsia

58.0000, 0.0000, 0.0000

Achromatomaly

58.1970, -2.0691, 10.3512

CSS Examples

Text

The CSS property to change the color of the text to YUV 57.9820, -5.9071, 28.0798 is called "color". The color property can be set on classes, ids or directly on the HTML element.

This example shows how text in the color `rgb(90, 44, 46)` looks like.

```
.text, #text, p{  
    color:rgb(90, 44, 46)  
}
```

If you want to add a text shadow in that color use the text-shadow property, you can generate a text shadow directly with our [CSS Text Shadow Generator](#).

Here you see how black text with a 4 pixel rgb(90, 44, 46) colored shadow looks like.

```
.shadow{ text-shadow: 4px 4px 2px rgb(90, 44, 46) }
```

Border

The CSS property to change the border of an element to YUV 57.9820, -5.9071, 28.0798 is called "border". The border property can be set on classes, ids or directly on the HTML element.

This example shows the color as border, it can be applied via the CSS property "border" or "border-color".

```
.border, #border, table{ border:4px solid rgb(90, 44, 46) }
```


If only the border color should be changed use the property `border-color`.

```
.border{ border-color:rgb(90, 44, 46) }
```

If you want to add a box shadow in that color use:

Here you see how a box with a 4 pixel `rgb(90, 44, 46)` colored shadow looks like.

```
.boxshadow{ -moz-box-shadow:4px 4px 4px  
4px rgb(90, 44, 46); -webkit-box-  
shadow:4px 4px 4px 4px rgb(90, 44, 46);  
box-shadow:4px 4px 4px 4px rgb(90, 44, 46)  
}
```

Background

The CSS property to change the background color of an element to YUV 57.9820, -5.9071, 28.0798 is called "background". The background property can be set on classes, ids or directly on the HTML element.

```
.background, #background, body{  
background: rgb(90, 44, 46) }
```

If only the background color should be changed can be used:

```
.background{ background-color: rgb(90, 44,  
46) }
```

This example shows the color as background, it is applied via the CSS property "background".

To optimize and compress your CSS code, you can use our [online CSS compressor and optimizer](#) based on csstidy. If you want to create a linear or radial gradient as background or border, check our [CSS Gradient Generator](#).

Hey! You found this booklet interesting? Support Converting Colors with the new Membership Option!

The pro membership hides all ads, plus gives you double the colors in the color bucket, and more awesome pro features!

[Learn more, Memberships starting at \\$2.50/m!](#)

**Follow me
on Twitter!**

@ConvertingColor