

Converting Colors

YUV(58.3830, -4.1328, 18.9581)

Have a look what the booklet for
YUV(58.3830, -4.1328, 18.9581)
contains.

YUV(58.3830, -4.1328, 18.9581)	3
<i>Conversions</i>	4
<i>Details</i>	6
<i>Harmonies</i>	12
<i>Previews</i>	24
<i>Color Blindness Simulation</i>	28
<i>CSS Examples</i>	31

Color

**YUV(58.3830, -4.1328,
18.9581)**

Conversions

Conversions Part 1

Format	Color
Hex	503132
RGB	80, 49, 50
RGB Percent	31%, 19%, 20%
CMY	0.6863, 0.8078, 0.8039
CMYK	0.00, 0.39, 0.38, 0.69
HSL	358°, 24%, 25%
HSV	358°, 39%, 31%
XYZ	4.9823, 4.1324, 3.5526
YIQ	58.3830, 18.1550, 6.8830

Conversions

Conversions Part 2

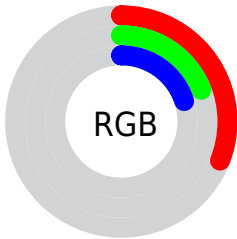
Format	Color
R_{YB}	80, 49, 50
Decimal	5255474
CIE _{Lab}	24.10, 14.26, 5.24
CIE _{LCh}	24, 15.193, 20.162
Yxy	4.1324, 0.3933, 0.3262
Android (android.graphics.Color)	4283445554 (0xFF503132)
YUV	58.3830, -4.1328, 18.9581
Hunter-Lab	20.3283, 8.1745, 3.8680

Details

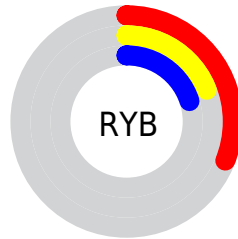
The YUV color **58.3830, -4.1328, 18.9581** is a dark color, and the websafe version is hex **663333**. A complement of this color would be **70.6170, 4.1328, -18.9581**, and the grayscale version is **58.0000, 0.0000, 0.0000**.

A 20% lighter version of the original color is **106.1660, -5.0118, 20.9024**, and **12.8670, -4.8644, 20.2876** is the 20% darker color. If you saturate the color by 10%, you get **52.7750, -5.3121, 23.8763**, and if you desaturate by 10%, it is **63.9910, -2.9536, 14.0399**.

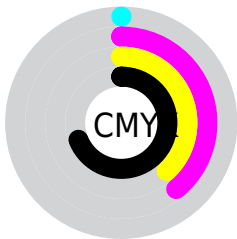
Distribution



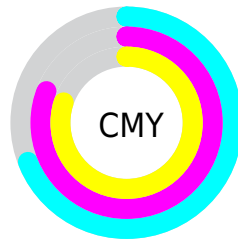
- Red (31%)
- Green (19%)
- Blue (20%)



- Red (31%)
- Yellow (19%)
- Blue (20%)



- Cyan (0%)
- Magenta (39%)
- Yellow (38%)
- Black (69%)



- Cyan (69%)
- Magenta (81%)
- Yellow (80%)

Brightness & Saturation Gradients

These gradients show how the YUV color 58.3830, -4.1328, 18.9581 changes by changing the brightness by 10 percent. The first figure shows a shift by +10% for each color and the second figure -10%.

Similar to the brightness gradients but the following saturation gradients show a change of the YUV color 58.3830, -4.1328, 18.9581 by changing the saturation by 10% instead.

■ 58.3830, -4.1328,
18.9581

■ 58.3830, -4.1328,
18.9581

■ 255.0000, 0.0000,
0.0000

■ 36.4860, -3.6906,
17.1138

■ 106.1660, -5.0118,
20.9024

■ 12.8670, -4.8644,
20.2876

■ 131.1770, -5.0173,
22.6468

■ 0.0000, 0.0000,
0.0000

■ 157.4760, -5.1647,
23.2615

■ 184.6610, -5.7489,
23.9763

■ 212.2590, -6.0437,
25.2059

■ 236.1870, -3.5432,

16.4990

■ 58.3830, -4.1328,
18.9581

■ 58.3830, -4.1328,
18.9581

■ 52.7750, -5.3121,
23.8763

■ 63.9910, -2.9536,
14.0399

■ 47.2810, -6.0545,
28.6946

■ 69.4850, -2.2111,
9.2217

■ 41.6730, -7.2338,
33.6128

■ 75.0930, -1.0318,
4.3034

■ 36.0650, -8.4130,
38.5310

■ 80.7010, 0.1474,
-0.6148

■ 30.4570, -9.5923,
43.4492

■ 86.3090, 1.3267,
-5.5330

■ 24.9630, -10.3348,
48.2674

■ 91.8030, 2.0691,
-10.3512

■ 24.2620, -10.4822,
48.8822

■ 97.4110, 3.2484,
-15.2694

■ 103.0190, 4.4276,
-20.1877

■ 108.6270, 5.6069,
-25.1059

Harmonies

Analogous

The Analogous color harmony consists of three colors that are next to each other on the color wheel.



58.8540, 1.5510, 15.9140



58.3830, -4.1328, 18.9581



58.1070, -8.9268, 16.5692

Triad

The Triadic color harmony groups three colors that are evenly spaced from another and form a triangle on the color wheel.



58.3830, -4.1328, 18.9581



54.3380, -6.0826, -9.0664



55.1040, 12.2737, -16.7542

Complementary

The Complementary color scheme is a pair of colors which are on the opposite of each other on the color wheel.



58.3830, -4.1328, 18.9581



70.6170, 4.1328, -18.9581

Split Complementary

Split-complementary colors differ from the complementary color scheme. The scheme consists of three colors, the original color and two neighbors of the complement color.



51.1090, 11.2853, -26.4056



58.3830, -4.1328, 18.9581



52.2920, 0.3490, -18.6731

Square

The Square scheme is like the rectangle color scheme, but the four colors are evenly spaced on the color wheel.



58.3830, -4.1328, 18.9581



55.7800, -9.7515, 1.0699



50.3710, 7.2121, -26.6354



58.0240, 10.3412, -3.5290

Rectangle

The Rectangle color scheme consists of four colors that form a rectangle on the color wheel.



58.3830, -4.1328, 18.9581



57.3300, -10.5157, 12.8656



50.3710, 7.2121, -26.6354



53.6690, 11.9952, -20.7577

Sweetspot

The Sweet Spot groups the original color and five complimentary colors.



58.3830, -4.1328, 18.9581



95.8870, -1.9163, 7.9921



61.5040, 9.1185, 15.3440



48.3920, -1.1793, 4.9182



181.0000, 0.0000, 0.0000



54.0000, 0.0000, 0.0000

Same Dimension

The Same Dimension uses a secret algorithm to generate beautiful new colors.



58.3830, -4.1328, 18.9581



70.1780, -6.4968, 30.5389



66.4870, -8.6211, 11.8509



38.1960, -0.5896, 2.4591



31.7370, -14.1673, 64.2517



70.1660, -31.1408, 141.9284

Inverse Universe

The Inverse Universe completely reimagines the original color for something new.



58.3830, -4.1328, 18.9581



70.1780, -6.4968, 30.5389



62.5130, 8.6211, -11.8509



38.1960, -0.5896, 2.4591



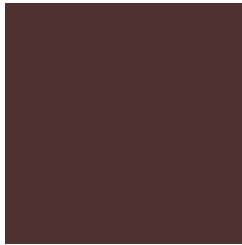
31.7370, -14.1673, 64.2517



70.1660, -31.1408, 141.9284

Previews

White Background



This preview shows how the YUV color 58.3830, -4.1328, 18.9581 looks on a white background.

Color Contrast Check

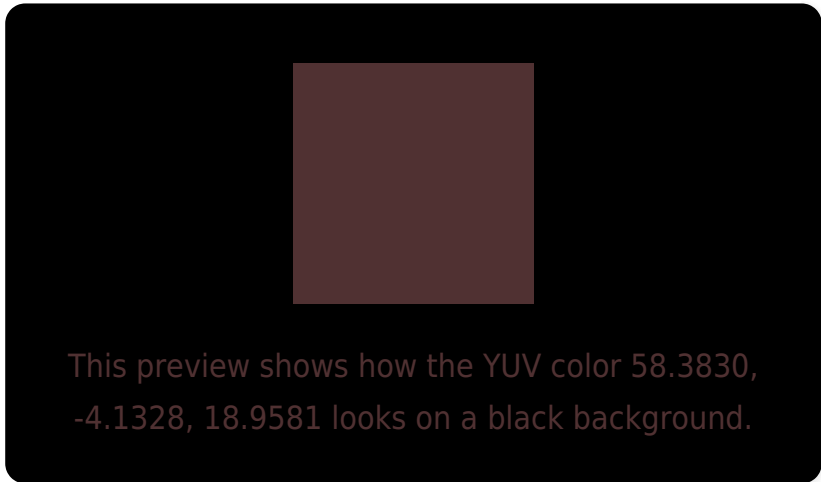
Large Text (above 18pt) WCAG AA ✓ Pass

Any Text WCAG AA ✓ Pass

Large Text (above 18pt) WCAG AAA ✓ Pass

Any Text WCAG AAA ✓ Pass

Black Background



Color Contrast Check

Large Text (above 18pt) WCAG AA × Fail

Any Text WCAG AA × Fail

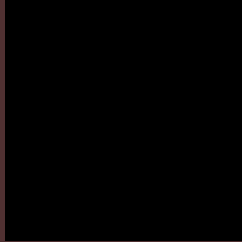
Large Text (above 18pt) WCAG AAA × Fail

Any Text WCAG AAA × Fail

If you want to check with other color combinations, try the [Color Contrast Checker](#).

YUV 58.3830, -4.1328, 18.9581

Background



This preview shows how black text looks on a background with the YUV color 58.3830, -4.1328, 18.9581.



This preview shows how white text looks on a background with the YUV color 58.3830, -4.1328,

Color Blindness Simulation

Color vision deficiency is a very complex topic, and I could not describe the different causes any better than Wikipedia does, so if you want to learn more, you should check out their [article about color blindness](#).

Dichromacy



Original Color

58.3830, -4.1328, 18.9581

Protanopia

57.5550, -1.7526, 2.1443

Deuteranopia

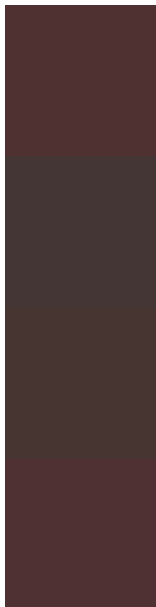
58.1920, -4.5317, 6.8476



Tritanopia

58.6110, -3.2592, 18.7582

Trichromacy



Original Color

58.3830, -4.1328, 18.9581

Protanomaly

57.7730, -2.3531, 8.0921

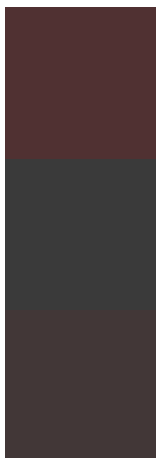
Deuteranomaly

57.9260, -4.4005, 11.4659

Tritanomaly

58.4970, -3.6960, 18.8581

Monochromacy



Original Color

58.3830, -4.1328, 18.9581

Achromatopsia

58.0000, 0.0000, 0.0000

Achromatomaly

58.2890, -1.6215, 6.7625

CSS Examples

Text

The CSS property to change the color of the text to YUV 58.3830, -4.1328, 18.9581 is called "color". The color property can be set on classes, ids or directly on the HTML element.

This example shows how text in the color `rgb(80, 49, 50)` looks like.

```
.text, #text, p{  
    color:rgb(80, 49, 50)  
}
```

If you want to add a text shadow in that color use the text-shadow property, you can generate a text shadow directly with our [CSS Text Shadow Generator](#).

Here you see how black text with a 4 pixel rgb(80, 49, 50) colored shadow looks like.

```
.shadow{ text-shadow: 4px 4px 2px rgb(80, 49, 50) }
```

Border

The CSS property to change the border of an element to YUV 58.3830, -4.1328, 18.9581 is called "border". The border property can be set on classes, ids or directly on the HTML element.

This example shows the color as border, it can be applied via the CSS property "border" or "border-color".

```
.border, #border, table{ border:4px solid rgb(80, 49, 50) }
```


If only the border color should be changed use the property `border-color`.

```
.border{ border-color:rgb(80, 49, 50) }
```

If you want to add a box shadow in that color use:

Here you see how a box with a 4 pixel `rgb(80, 49, 50)` colored shadow looks like.

```
.boxshadow{ -moz-box-shadow:4px 4px 4px  
4px rgb(80, 49, 50); -webkit-box-  
shadow:4px 4px 4px 4px rgb(80, 49, 50);  
box-shadow:4px 4px 4px 4px rgb(80, 49, 50)  
}
```

Background

The CSS property to change the background color of an element to YUV 58.3830, -4.1328, 18.9581 is called "background". The background property can be set on classes, ids or directly on the HTML element.

```
.background, #background, body{  
background: rgb(80, 49, 50) }
```

If only the background color should be changed can be used:

```
.background{ background-color: rgb(80, 49,  
50) }
```

This example shows the color as background, it is applied via the CSS property "background".

To optimize and compress your CSS code, you can use our [online CSS compressor and optimizer](#) based on csstidy. If you want to create a linear or radial gradient as background or border, check our [CSS Gradient Generator](#).

Hey! You found this booklet interesting? Support Converting Colors with the new Membership Option!

The pro membership hides all ads, plus gives you double the colors in the color bucket, and more awesome pro features!

[Learn more, Memberships starting at \\$2.50/m!](#)

**Follow me
on Twitter!**

@ConvertingColor