

Converting Colors

YUV(58.5470, -6.1857, 24.0763)

Have a look what the booklet for
YUV(58.5470, -6.1857, 24.0763)
contains.

YUV(58.5470, -6.1857, 24.0763)	3
<i>Conversions</i>	4
<i>Details</i>	6
<i>Harmonies</i>	12
<i>Previews</i>	24
<i>Color Blindness Simulation</i>	28
<i>CSS Examples</i>	31

Color

**YUV(58.5470, -6.1857,
24.0763)**

Conversions

Conversions Part 1

Format	Color
Hex	562F2E
RGB	86, 47, 46
RGB Percent	34%, 18%, 18%
CMY	0.6627, 0.8157, 0.8196
CMYK	0.00, 0.45, 0.47, 0.66
HSL	2°, 30%, 26%
HSV	2°, 47%, 34%
XYZ	5.3474, 4.2087, 3.1153
YIQ	58.5470, 23.5650, 7.9570

Conversions

Conversions Part 2

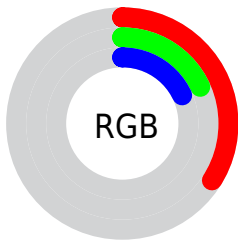
Format	Color
RYB	86, 47, 46
Decimal	5648174
CIELab	24.35, 17.67, 8.40
CIELCh	24, 19.562, 25.423
Yxy	4.2087, 0.4220, 0.3321
Android (android.graphics.Color)	4283838254 (0xFF562F2E)
YUV	58.5470, -6.1857, 24.0763
Hunter-Lab	20.5152, 10.6256, 5.3572

Details

The YUV color **58.5470, -6.1857, 24.0763** is a dark color, and the websafe version is hex **663333**. A complement of this color would be **73.4530, 6.1857, -24.0763**, and the grayscale version is **59.0000, 0.0000, 0.0000**.

A 20% lighter version of the original color is **106.9280, -7.3595, 27.2501**, and **12.5470, -6.1857, 24.0763** is the 20% darker color. If you saturate the color by 10%, you get **52.8250, -7.8017, 29.0945**, and if you desaturate by 10%, it is **64.2690, -4.5696, 19.0581**.

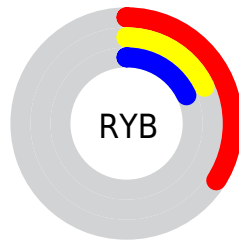
Distribution



Red (34%)

Green (18%)

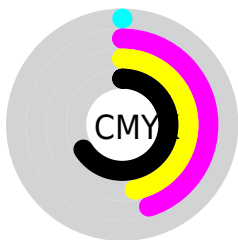
Blue (18%)



Red (34%)

Yellow (18%)

Blue (18%)

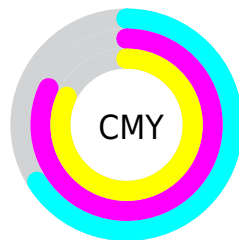


Cyan (0%)

Magenta (45%)

Yellow (47%)

Black (66%)



Cyan (66%)

Magenta (82%)

Yellow (82%)

Brightness & Saturation Gradients

These gradients show how the YUV color 58.5470, -6.1857, 24.0763 changes by changing the brightness by 10 percent. The first figure shows a shift by +10% for each color and the second figure -10%.

Similar to the brightness gradients but the following saturation gradients show a change of the YUV color 58.5470, -6.1857, 24.0763 by changing the saturation by 10% instead.

■ 58.5470, -6.1857,
24.0763

■ 58.5470, -6.1857,
24.0763

255.0000, 0.0000,
0.0000

■ 35.7640, -5.3067,
22.1320

■ 106.9280, -7.3595,
27.2501

■ 12.5470, -6.1857,
24.0763

■ 132.1130, -7.9437,
27.9649

■ 0.0000, 0.0000,
0.0000

■ 158.1240, -7.9491,
29.7093

■ 185.3090, -8.5333,
30.4240

■ 212.9070, -8.8282,
31.6536

■ 234.9160, -5.8746,

17.6137

254.6580, -1.3104,
0.2999

■ 58.5470, -6.1857,
24.0763

■ 58.5470, -6.1857,
24.0763

■ 52.8250, -7.8017,
29.0945

■ 64.2690, -4.5696,
19.0581

■ 46.6300, -8.6916,
34.5275

■ 70.4640, -3.6798,
13.6251

■ 40.9080, -10.3076,
39.5457

■ 76.1860, -2.0637,
8.6069

■ 34.7130, -11.1975,
44.9787

■ 82.3810, -1.1738,
3.1739

■ 28.9910, -12.8136,
49.9969

■ 88.1030, 0.4422,
-1.8443

■ 26.8880, -13.2558,
51.8412

■ 93.8250, 2.0583,
-6.8625

■ 100.0200, 2.9481,
-12.2955

■ 105.7420, 4.5642,
-17.3137

■ 111.3500, 5.7435,
-22.2319

Harmonies

Analogous

The Analogous color harmony consists of three colors that are next to each other on the color wheel.



59.0720, 0.9505, 21.8619



58.5470, -6.1857, 24.0763



57.7330, -11.7004, 19.5282

Triad

The Triadic color harmony groups three colors that are evenly spaced from another and form a triangle on the color wheel.



58.5470, -6.1857, 24.0763



53.3050, -6.0664, -14.2995



54.4070, 16.0683, -20.5279

Complementary

The Complementary color scheme is a pair of colors which are on the opposite of each other on the color wheel.



58.5470, -6.1857, 24.0763



73.4530, 6.1857, -24.0763

Split Complementary

Split-complementary colors differ from the complementary color scheme. The scheme consists of three colors, the original color and two neighbors of the complement color.



46.9160, 17.2964, -41.1453



58.5470, -6.1857, 24.0763



48.9100, 3.0024, -29.7391

Square

The Square scheme is like the rectangle color scheme, but the four colors are evenly spaced on the color wheel.



58.5470, -6.1857, 24.0763



55.7860, -12.2195, -0.6893



46.1350, 11.7654, -40.4604



58.6050, 12.5197, -2.2846

Rectangle

The Rectangle color scheme consists of four colors that form a rectangle on the color wheel.



58.5470, -6.1857, 24.0763



56.8310, -13.7207, 14.1802



46.1350, 11.7654, -40.4604



51.5910, 16.9636, -27.7053

Sweetspot

The Sweet Spot groups the original color and five complimentary colors.



58.5470, -6.1857, 24.0763



101.3710, -2.6479, 9.3216



62.4060, 11.1388, 20.6919



49.6910, -1.3267, 5.5330



184.0000, 0.0000, 0.0000



56.0000, 0.0000, 0.0000

Same Dimension

The Same Dimension uses a secret algorithm to generate beautiful new colors.



58.5470, -6.1857, 24.0763



69.0110, -9.8654, 37.7014



70.2870, -11.9735, 13.7803



40.1960, -0.5896, 2.4591



33.7540, -16.6407, 64.2367



73.7870, -36.3770, 141.3838

Inverse Universe

The Inverse Universe completely reimagines the original color for something new.



73.4530, 6.1857, -24.0763



92.5760, 9.5760, -38.2162



61.7130, 11.9735, -13.7803



41.8040, 0.5896, -2.4591



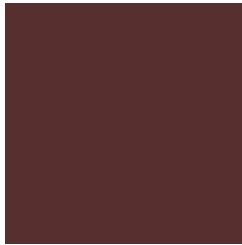
73.2460, 16.6407, -64.2367



161.2130, 36.3770, -141.3838

Previews

White Background



This preview shows how the YUV color 58.5470, -6.1857, 24.0763 looks on a white background.

Color Contrast Check

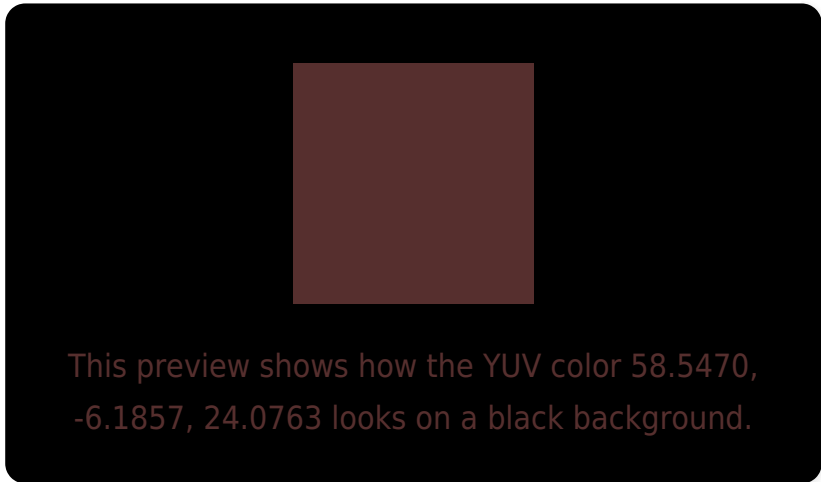
Large Text (above 18pt) WCAG AA ✓ Pass

Any Text WCAG AA ✓ Pass

Large Text (above 18pt) WCAG AAA ✓ Pass

Any Text WCAG AAA ✓ Pass

Black Background



Color Contrast Check

Large Text (above 18pt) WCAG AA × Fail

Any Text WCAG AA × Fail

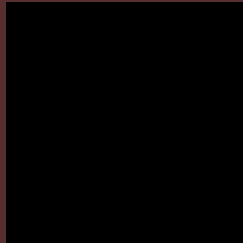
Large Text (above 18pt) WCAG AAA × Fail

Any Text WCAG AAA × Fail

If you want to check with other color combinations, try the [Color Contrast Checker](#).

YUV 58.5470, -6.1857, 24.0763

Background



This preview shows how black text looks on a background with the YUV color 58.5470, -6.1857, 24.0763.

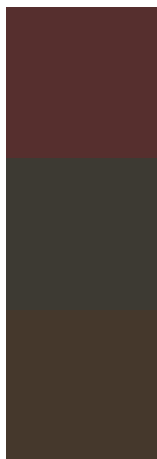


This preview shows how white text looks on a background with the YUV color 58.5470, -6.1857,

Color Blindness Simulation

Color vision deficiency is a very complex topic, and I could not describe the different causes any better than Wikipedia does, so if you want to learn more, you should check out their [article about color blindness](#).

Dichromacy



Original Color

58.5470, -6.1857, 24.0763

Protanopia

58.0990, -3.4998, 2.5442

Deuteranopia

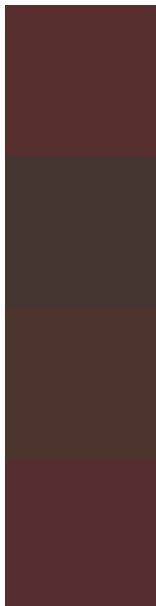
58.5190, -7.1579, 9.1918



Tritanopia

58.4160, -4.1491, 24.1912

Trichromacy



Original Color

58.5470, -6.1857, 24.0763

Protanomaly

58.2140, -4.5425, 10.3363

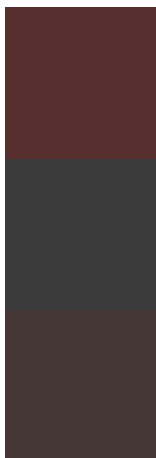
Deuteranomaly

58.6660, -6.7373, 14.3249

Tritanomaly

58.3020, -4.5859, 24.2911

Monochromacy



Original Color

58.5470, -6.1857, 24.0763

Achromatopsia

59.0000, 0.0000, 0.0000

Achromatomaly

59.0720, -2.5005, 8.7069

CSS Examples

Text

The CSS property to change the color of the text to YUV 58.5470, -6.1857, 24.0763 is called "color". The color property can be set on classes, ids or directly on the HTML element.

This example shows how text in the color `rgb(86, 47, 46)` looks like.

```
.text, #text, p{  
    color:rgb(86, 47, 46)  
}
```

If you want to add a text shadow in that color use the text-shadow property, you can generate a text shadow directly with our [CSS Text Shadow Generator](#).

Here you see how black text with a 4 pixel rgb(86, 47, 46) colored shadow looks like.

```
.shadow{ text-shadow: 4px 4px 2px rgb(86, 47, 46) }
```

Border

The CSS property to change the border of an element to YUV 58.5470, -6.1857, 24.0763 is called "border". The border property can be set on classes, ids or directly on the HTML element.

This example shows the color as border, it can be applied via the CSS property "border" or "border-color".

```
.border, #border, table{ border:4px solid rgb(86, 47, 46) }
```


If only the border color should be changed use the property border-color.

```
.border{ border-color:rgb(86, 47, 46) }
```

If you want to add a box shadow in that color use:

Here you see how a box with a 4 pixel rgb(86, 47, 46) colored shadow looks like.

```
.boxshadow{ -moz-box-shadow:4px 4px 4px  
4px rgb(86, 47, 46); -webkit-box-  
shadow:4px 4px 4px 4px rgb(86, 47, 46);  
box-shadow:4px 4px 4px 4px rgb(86, 47, 46)  
}
```

Background

The CSS property to change the background color of an element to YUV 58.5470, -6.1857, 24.0763 is called "background". The background property can be set on classes, ids or directly on the HTML element.

```
.background, #background, body{  
background: rgb(86, 47, 46) }
```

If only the background color should be changed can be used:

```
.background{ background-color: rgb(86, 47,  
46) }
```

This example shows the color as background, it is applied via the CSS property "background".

To optimize and compress your CSS code, you can use our [online CSS compressor and optimizer](#) based on csstidy. If you want to create a linear or radial gradient as background or border, check our [CSS Gradient Generator](#).

Hey! You found this booklet interesting? Support Converting Colors with the new Membership Option!

The pro membership hides all ads, plus gives you double the colors in the color bucket, and more awesome pro features!

[Learn more, Memberships starting at \\$2.50/m!](#)

**Follow me
on Twitter!**

@ConvertingColor