

Converting Colors

YUV(59.1270, -2.5276, 17.4286)

Have a look what the booklet for
YUV(59.1270, -2.5276, 17.4286)
contains.

YUV(59.1270, -2.5276, 17.4286)	3
<i>Conversions</i>	4
<i>Details</i>	6
<i>Harmonies</i>	12
<i>Previews</i>	24
<i>Color Blindness Simulation</i>	28
<i>CSS Examples</i>	31

Color

**YUV(59.1270, -2.5276,
17.4286)**

Conversions

Conversions Part 1

Format	Color
Hex	4F3236
RGB	79, 50, 54
RGB Percent	31%, 20%, 21%
CMY	0.6902, 0.8039, 0.7882
CMYK	0.00, 0.37, 0.32, 0.69
HSL	352°, 22%, 25%
HSV	352°, 37%, 31%
XYZ	5.0309, 4.2098, 4.0374
YIQ	59.1270, 16.0000, 7.3920

Conversions

Conversions Part 2

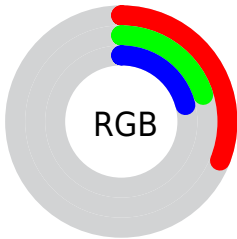
Format	Color
RYB	79, 50, 54
Decimal	5190198
CIELab	24.35, 13.80, 2.88
CIElCh	24, 14.094, 11.799
Yxy	4.2098, 0.3789, 0.3170
Android (android.graphics.Color)	4283380278 (0xFF4F3236)
YUV	59.1270, -2.5276, 17.4286
Hunter-Lab	20.5178, 7.8615, 2.6955

Details

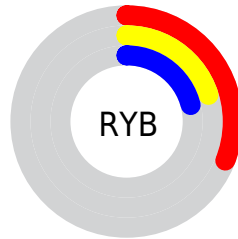
The YUV color **59.1270, -2.5276, 17.4286** is a dark color, and the websafe version is hex **663333**. A complement of this color would be **69.8730, 2.5276, -17.4286**, and the grayscale version is **59.0000, 0.0000, 0.0000**.

A 20% lighter version of the original color is **107.0240, -2.9698, 19.2730**, and **14.4260, -2.6750, 18.0434** is the 20% darker color. If you saturate the color by 10%, you get **53.6330, -3.2701, 22.2469**, and if you desaturate by 10%, it is **64.6210, -1.7852, 12.6104**.

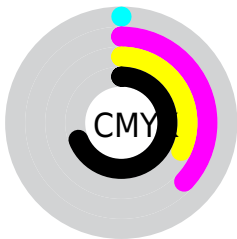
Distribution



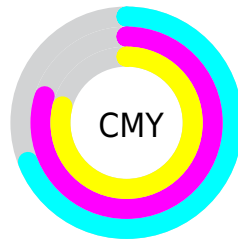
- Red (31%)
- Green (20%)
- Blue (21%)



- Red (31%)
- Yellow (20%)
- Blue (21%)



- Cyan (0%)
- Magenta (37%)
- Yellow (32%)
- Black (69%)



- Cyan (69%)
- Magenta (80%)
- Yellow (79%)

Brightness & Saturation Gradients

These gradients show how the YUV color 59.1270, -2.5276, 17.4286 changes by changing the brightness by 10 percent. The first figure shows a shift by +10% for each color and the second figure -10%.

Similar to the brightness gradients but the following saturation gradients show a change of the YUV color 59.1270, -2.5276, 17.4286 by changing the saturation by 10% instead.

■ 59.1270, -2.5276,
17.4286

■ 59.1270, -2.5276,
17.4286

■ 255.0000, 0.0000,
0.0000

■ 37.2300, -2.0854,
15.5843

■ 107.0240, -2.9698,
19.2730

■ 14.4260, -2.6750,
18.0434

■ 132.3230, -3.1172,
19.8877

■ 0.0000, 0.0000,
0.0000

■ 158.2200, -3.5595,
21.7321

■ 185.2200, -3.5595,
21.7321

■ 212.9320, -3.4175,
22.8616

■ 237.9310, -1.9380,

14.9695

■ 59.1270, -2.5276,
17.4286

■ 59.1270, -2.5276,
17.4286

■ 53.6330, -3.2701,
22.2469

■ 64.6210, -1.7852,
12.6104

■ 48.1390, -4.0125,
27.0651

■ 70.1150, -1.0427,
7.7921

■ 42.7590, -4.3182,
31.7834

■ 75.4950, -0.7370,
3.0739

■ 37.2650, -5.0606,
36.6016

■ 80.9890, 0.0054,
-1.7444

■ 31.7710, -5.8031,
41.4198

■ 86.4830, 0.7479,
-6.5626

■ 26.8640, -6.8350,
45.7233

■ 91.3900, 1.7797,
-10.8660

■ 24.8750, -6.8404,
47.4676

■ 96.8840, 2.5222,
-15.6843

■ 102.2640, 2.8278,
-20.4025

■ 107.7580, 3.5703,
-25.2208

Harmonies

Analogous

The Analogous color harmony consists of three colors that are next to each other on the color wheel.



59.7720, 2.5774, 13.3550



59.1270, -2.5276, 17.4286



58.5630, -7.1796, 16.1692

Triad

The Triadic color harmony groups three colors that are evenly spaced from another and form a triangle on the color wheel.



59.1270, -2.5276, 17.4286



55.2460, -6.5303, -5.4777



55.1640, 11.2581, -17.6838

Complementary

The Complementary color scheme is a pair of colors which are on the opposite of each other on the color wheel.



59.1270, -2.5276, 17.4286



69.8730, 2.5276, -17.4286

Split Complementary

Split-complementary colors differ from the complementary color scheme. The scheme consists of three colors, the original color and two neighbors of the complement color.



52.6640, 9.5326, -24.2613



59.1270, -2.5276, 17.4286



53.8580, -1.4090, -14.7845

Square

The Square scheme is like the rectangle color scheme, but the four colors are evenly spaced on the color wheel.



59.1270, -2.5276, 17.4286



57.0900, -9.9044, 3.4291



52.7090, 4.5805, -22.5468



57.3010, 10.2046, -6.4030

Rectangle

The Rectangle color scheme consists of four colors that form a rectangle on the color wheel.



59.1270, -2.5276, 17.4286



58.3840, -9.0633, 13.6952



52.7090, 4.5805, -22.5468



54.0280, 10.8322, -21.0726

Sweetspot

The Sweet Spot groups the original color and five complimentary colors.



59.1270, -2.5276, 17.4286



94.4030, -1.1847, 6.6626



60.7810, 8.9820, 12.4701



46.2070, -0.5951, 4.2035



179.0000, 0.0000, 0.0000



51.0000, 0.0000, 0.0000

Same Dimension

The Same Dimension uses a secret algorithm to generate beautiful new colors.



59.1270, -2.5276, 17.4286



71.1390, -4.0125, 27.0651



64.5410, -7.1687, 12.6805



35.3100, -0.1528, 2.3591



32.0940, -8.9203, 61.3076



72.4180, -19.9261, 138.1994

Inverse Universe

The Inverse Universe completely reimagines the original color for something new.



59.1270, -2.5276, 17.4286



71.1390, -4.0125, 27.0651



64.4590, 7.1687, -12.6805



35.3100, -0.1528, 2.3591



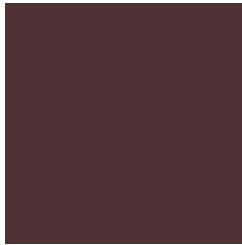
32.0940, -8.9203, 61.3076



72.4180, -19.9261, 138.1994

Previews

White Background



This preview shows how the YUV color 59.1270, -2.5276, 17.4286 looks on a white background.

Color Contrast Check

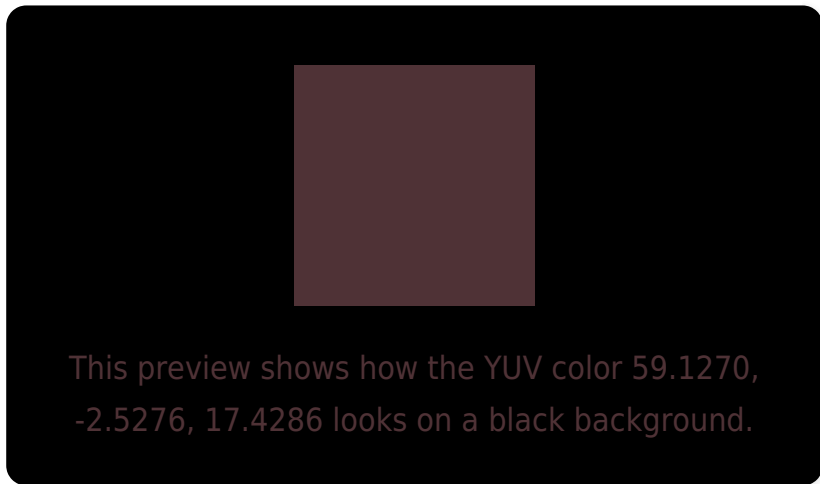
Large Text (above 18pt) WCAG AA ✓ Pass

Any Text WCAG AA ✓ Pass

Large Text (above 18pt) WCAG AAA ✓ Pass

Any Text WCAG AAA ✓ Pass

Black Background



Color Contrast Check

Large Text (above 18pt) WCAG AA × Fail

Any Text WCAG AA × Fail

Large Text (above 18pt) WCAG AAA × Fail

Any Text WCAG AAA × Fail

If you want to check with other color combinations, try the [Color Contrast Checker](#).

YUV 59.1270, -2.5276, 17.4286

Background



This preview shows how black text looks on a background with the YUV color 59.1270, -2.5276, 17.4286.

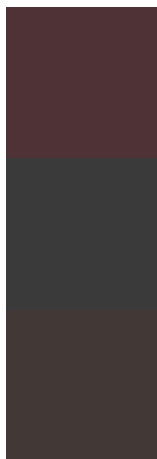


This preview shows how white text looks on a background with the YUV color 59.1270, -2.5276,

Color Blindness Simulation

Color vision deficiency is a very complex topic, and I could not describe the different causes any better than Wikipedia does, so if you want to learn more, you should check out their [article about color blindness](#).

Dichromacy



Original Color

59.1270, -2.5276, 17.4286

Protanopia

58.2990, -0.1474, 0.6148

Deuteranopia

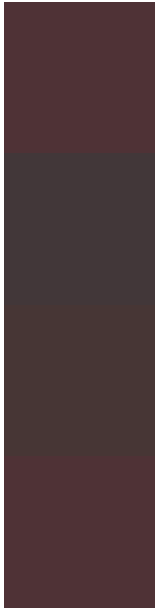
58.6480, -2.7845, 6.4477



Tritanopia

59.1270, -2.5276, 17.4286

Trichromacy



Original Color

59.1270, -2.5276, 17.4286

Protanomaly

58.5170, -0.7479, 6.5626

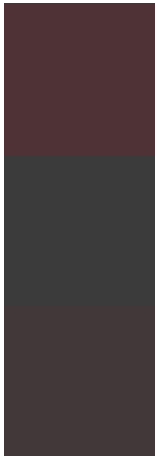
Deuteranomaly

58.9690, -2.9427, 10.5512

Tritanomaly

59.1270, -2.5276, 17.4286

Monochromacy



Original Color

59.1270, -2.5276, 17.4286

Achromatopsia

59.0000, 0.0000, 0.0000

Achromatomaly

59.1040, -1.0373, 6.0478

CSS Examples

Text

The CSS property to change the color of the text to YUV 59.1270, -2.5276, 17.4286 is called "color". The color property can be set on classes, ids or directly on the HTML element.

This example shows how text in the color `rgb(79, 50, 54)` looks like.

```
.text, #text, p{  
    color:rgb(79, 50, 54)  
}
```

If you want to add a text shadow in that color use the text-shadow property, you can generate a text shadow directly with our [CSS Text Shadow Generator](#).

Here you see how black text with a 4 pixel rgb(79, 50, 54) colored shadow looks like.

```
.shadow{ text-shadow: 4px 4px 2px rgb(79, 50, 54) }
```

Border

The CSS property to change the border of an element to YUV 59.1270, -2.5276, 17.4286 is called "border". The border property can be set on classes, ids or directly on the HTML element.

This example shows the color as border, it can be applied via the CSS property "border" or "border-color".

```
.border, #border, table{ border:4px solid rgb(79, 50, 54) }
```


If only the border color should be changed use the property `border-color`.

```
.border{ border-color:rgb(79, 50, 54) }
```

If you want to add a box shadow in that color use:

Here you see how a box with a 4 pixel `rgb(79, 50, 54)` colored shadow looks like.

```
.boxshadow{ -moz-box-shadow:4px 4px 4px  
4px rgb(79, 50, 54); -webkit-box-  
shadow:4px 4px 4px 4px rgb(79, 50, 54);  
box-shadow:4px 4px 4px 4px rgb(79, 50, 54)  
}
```

Background

The CSS property to change the background color of an element to YUV 59.1270, -2.5276, 17.4286 is called "background". The background property can be set on classes, ids or directly on the HTML element.

```
.background, #background, body{  
background: rgb(79, 50, 54) }
```

If only the background color should be changed can be used:

```
.background{ background-color: rgb(79, 50,  
54) }
```

This example shows the color as background, it is applied via the CSS property "background".

To optimize and compress your CSS code, you can use our [online CSS compressor and optimizer](#) based on csstidy. If you want to create a linear or radial gradient as background or border, check our [CSS Gradient Generator](#).

Hey! You found this booklet interesting? Support Converting Colors with the new Membership Option!

The pro membership hides all ads, plus gives you double the colors in the color bucket, and more awesome pro features!

[Learn more, Memberships starting at \\$2.50/m!](#)

**Follow me
on Twitter!**

@ConvertingColor