

Converting Colors

YUV(59.3130, -8.0423, 12.8805)

Have a look what the booklet for
YUV(59.3130, -8.0423, 12.8805)
contains.

YUV(59.3130, -8.0423, 12.8805)	3
<i>Conversions</i>	4
<i>Details</i>	6
<i>Harmonies</i>	12
<i>Previews</i>	24
<i>Color Blindness Simulation</i>	28
<i>CSS Examples</i>	31

Color

**YUV(59.3130, -8.0423,
12.8805)**

Conversions

Conversions Part 1

Format	Color
Hex	4A372B
RGB	74, 55, 43
RGB Percent	29%, 22%, 17%
CMY	0.7098, 0.7843, 0.8314
CMYK	0.00, 0.26, 0.42, 0.71
HSL	23°, 26%, 23%
HSV	23°, 42%, 29%
XYZ	4.6263, 4.3626, 2.8837
YIQ	59.3130, 15.1760, 0.2960

Conversions

Conversions Part 2

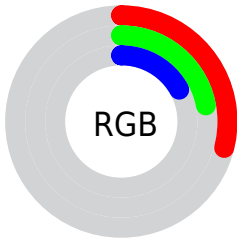
Format	Color
R_{YB}	74, 63, 43
Decimal	4863787
CIE Lab	24.84, 6.54, 10.79
CIE LCh	25, 12.619, 58.774
Yxy	4.3626, 0.3897, 0.3675
Android (android.graphics.Color)	4283053867 (0xFF4A372B)
YUV	59.3130, -8.0423, 12.8805
Hunter-Lab	20.8869, 2.9841, 6.4350

Details

The YUV color **59.3130, -8.0423, 12.8805** is a dark color, and the websafe version is hex **333333**. A complement of this color would be **57.6870, 8.0423, -12.8805**, and the grayscale version is **59.0000, 0.0000, 0.0000**.

A 20% lighter version of the original color is **106.9820, -9.3581, 14.9248**, and **16.3130, -8.0423, 12.8805** is the 20% darker color. If you saturate the color by 10%, you get **55.5800, -9.6529, 16.1543**, and if you desaturate by 10%, it is **63.0460, -6.4317, 9.6067**.

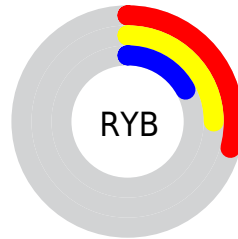
Distribution



Red (29%)

Green (22%)

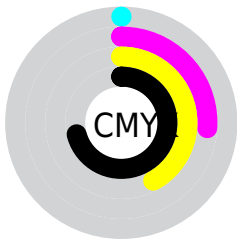
Blue (17%)



Red (29%)

Yellow (25%)

Blue (17%)

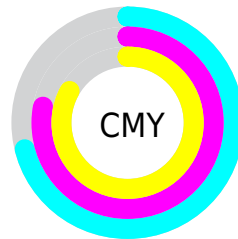


Cyan (0%)

Magenta (26%)

Yellow (42%)

Black (71%)



Cyan (71%)

Magenta (78%)

Yellow (83%)

Brightness & Saturation Gradients

These gradients show how the YUV color 59.3130, -8.0423, 12.8805 changes by changing the brightness by 10 percent. The first figure shows a shift by +10% for each color and the second figure -10%.

Similar to the brightness gradients but the following saturation gradients show a change of the YUV color 59.3130, -8.0423, 12.8805 by changing the saturation by 10% instead.

■ 59.3130, -8.0423,
12.8805

■ 59.3130, -8.0423,
12.8805

255.0000, 0.0000,
0.0000

■ 37.7150, -7.7475,
11.6509

■ 106.9820, -9.3581,
14.9248

■ 16.3130, -8.0423,
12.8805

■ 132.2810, -9.5055,
15.5396

■ 0.0000, 0.0000,
0.0000

■ 158.4660,
-10.0897, 16.2543

■ 184.8790, -9.8003,
16.7691

■ 213.0640,
-10.3846, 17.4839

■ 239.2700, -9.5001,

13.7952

254.2020, -3.0576,
0.6998

59.3130, -8.0423,
12.8805

59.3130, -8.0423,
12.8805

55.5800, -9.6529,
16.1543

63.0460, -6.4317,
9.6067

52.3200, -11.9898,
19.0134

66.3060, -4.0949,
6.7476

48.5870, -13.6004,
22.2872

70.0390, -2.4842,
3.4738

45.3270, -15.9372,
25.1462

73.2990, -0.1474,
0.6148

41.5940, -17.5478,
28.4201

77.0320, 1.4632,
-2.6591

■ 39.1490, -19.3005,
30.5643

■ 80.1780, 3.3632,
-5.4181

■ 84.0250, 5.4107,
-8.7919

■ 87.1710, 7.3107,
-11.5510

■ 91.0180, 9.3581,
-14.9248

Harmonies

Analogous

The Analogous color harmony consists of three colors that are next to each other on the color wheel.



60.1330, -4.9956, 15.6694



59.3130, -8.0423, 12.8805



58.3400, -9.0416, 6.7178

Triad

The Triadic color harmony groups three colors that are evenly spaced from another and form a triangle on the color wheel.



59.3130, -8.0423, 12.8805



54.6450, 1.6540, -17.2287



60.0630, 7.8569, -0.0553

Complementary

The Complementary color scheme is a pair of colors which are on the opposite of each other on the color wheel.



59.3130, -8.0423, 12.8805



57.6870, 8.0423, -12.8805

Split Complementary

Split-complementary colors differ from the complementary color scheme. The scheme consists of three colors, the original color and two neighbors of the complement color.



57.8660, 9.9261, -10.4065



59.3130, -8.0423, 12.8805



54.2900, 6.7590, -21.3023

Square

The Square scheme is like the rectangle color scheme, but the four colors are evenly spaced on the color wheel.



59.3130, -8.0423, 12.8805



56.0220, -3.4618, -9.6663



55.9960, 9.3690, -18.4135



60.7930, 4.0461, 8.9515

Rectangle

The Rectangle color scheme consists of four colors that form a rectangle on the color wheel.



59.3130, -8.0423, 12.8805



57.8340, -8.2992, 1.8996



55.9960, 9.3690, -18.4135



59.5680, 8.5940, -3.1291

Sweetspot

The Sweet Spot groups the original color and five complimentary colors.



59.3130, -8.0423, 12.8805



90.8220, -3.3632, 5.4181



54.4350, 3.7295, 17.1585



44.8540, -1.9000, 2.7590



176.0000, 0.0000, 0.0000



48.0000, 0.0000, 0.0000

Same Dimension

The Same Dimension uses a secret algorithm to generate beautiful new colors.



59.3130, -8.0423, 12.8805



73.8040, -12.7214, 20.3429



68.1180, -12.3832, 5.1585



36.3700, -1.1684, 1.4295



53.3910, -26.3218, 42.6301



121.0130, -59.6594, 95.5816

Inverse Universe

The Inverse Universe completely reimagines the original color for something new.



57.6870, 8.0423, -12.8805



71.1960, 12.7214, -20.3429



48.8820, 12.3832, -5.1585



36.2170, 0.8790, -1.9443



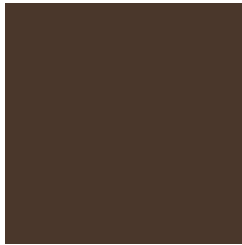
48.6090, 26.3218, -42.6301



108.9870, 59.6594, -95.5816

Previews

White Background



This preview shows how the YUV color 59.3130, -8.0423, 12.8805 looks on a white background.

Color Contrast Check

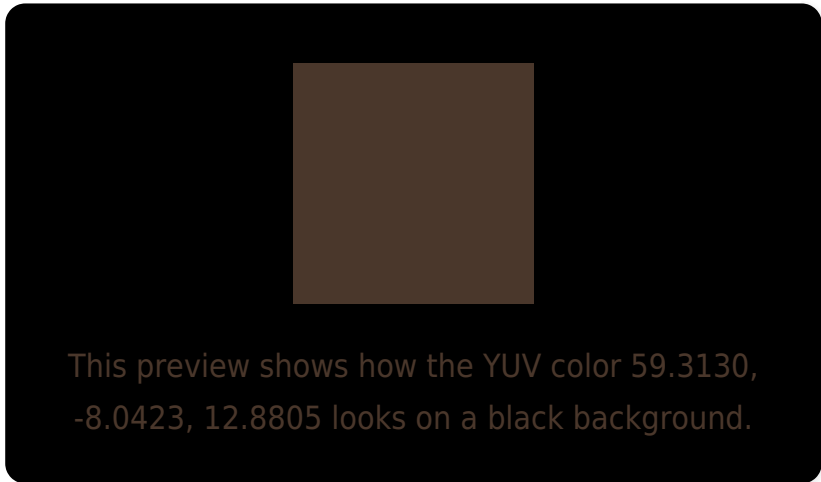
Large Text (above 18pt) WCAG AA ✓ Pass

Any Text WCAG AA ✓ Pass

Large Text (above 18pt) WCAG AAA ✓ Pass

Any Text WCAG AAA ✓ Pass

Black Background



Color Contrast Check

Large Text (above 18pt) WCAG AA × Fail

Any Text WCAG AA × Fail

Large Text (above 18pt) WCAG AAA × Fail

Any Text WCAG AAA × Fail

If you want to check with other color combinations, try the [Color Contrast Checker](#).

YUV 59.3130, -8.0423, 12.8805

Background



This preview shows how black text looks on a background with the YUV color 59.3130, -8.0423, 12.8805.



This preview shows how white text looks on a background with the YUV color 59.3130, -8.0423,

Color Blindness Simulation

Color vision deficiency is a very complex topic, and I could not describe the different causes any better than Wikipedia does, so if you want to learn more, you should check out their [article about color blindness](#).

Dichromacy



Original Color

59.3130, -8.0423, 12.8805

Protanopia

58.6000, -6.7048, 3.8588

Deuteranopia

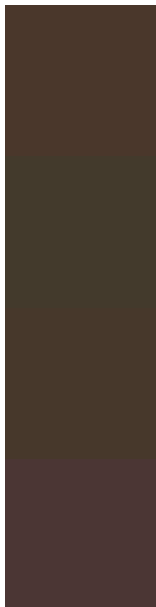
59.2910, -8.0315, 9.3918



Tritanopia

60.0340, -1.4958, 13.1252

Trichromacy



Original Color

59.3130, -8.0423, 12.8805

Protanomaly

59.0950, -7.4418, 6.9327

Deuteranomaly

59.0030, -7.8895, 10.5214

Tritanomaly

60.0510, -3.9691, 13.1103

Monochromacy



Original Color

59.3130, -8.0423, 12.8805

Achromatopsia

59.0000, 0.0000, 0.0000

Achromatomaly

59.2240, -3.0684, 4.1886

CSS Examples

Text

The CSS property to change the color of the text to YUV 59.3130, -8.0423, 12.8805 is called "color". The color property can be set on classes, ids or directly on the HTML element.

This example shows how text in the color `rgb(74, 55, 43)` looks like.

```
.text, #text, p{  
    color:rgb(74, 55, 43)  
}
```

If you want to add a text shadow in that color use the text-shadow property, you can generate a text shadow directly with our [CSS Text Shadow Generator](#).

Here you see how black text with a 4 pixel rgb(74, 55, 43) colored shadow looks like.

```
.shadow{ text-shadow: 4px 4px 2px rgb(74, 55, 43) }
```

Border

The CSS property to change the border of an element to YUV 59.3130, -8.0423, 12.8805 is called "border". The border property can be set on classes, ids or directly on the HTML element.

This example shows the color as border, it can be applied via the CSS property "border" or "border-color".

```
.border, #border, table{ border:4px solid rgb(74, 55, 43) }
```


If only the border color should be changed use the property `border-color`.

```
.border{ border-color:rgb(74, 55, 43) }
```

If you want to add a box shadow in that color use:

Here you see how a box with a 4 pixel `rgb(74, 55, 43)` colored shadow looks like.

```
.boxshadow{ -moz-box-shadow:4px 4px 4px  
4px rgb(74, 55, 43); -webkit-box-  
shadow:4px 4px 4px 4px rgb(74, 55, 43);  
box-shadow:4px 4px 4px 4px rgb(74, 55, 43)  
}
```

Background

The CSS property to change the background color of an element to YUV 59.3130, -8.0423, 12.8805 is called "background". The background property can be set on classes, ids or directly on the HTML element.

```
.background, #background, body{  
background: rgb(74, 55, 43) }
```

If only the background color should be changed can be used:

```
.background{ background-color: rgb(74, 55,  
43) }
```

This example shows the color as background, it is applied via the CSS property "background".

To optimize and compress your CSS code, you can use our [online CSS compressor and optimizer](#) based on csstidy. If you want to create a linear or radial gradient as background or border, check our [CSS Gradient Generator](#).

Hey! You found this booklet interesting? Support Converting Colors with the new Membership Option!

The pro membership hides all ads, plus gives you double the colors in the color bucket, and more awesome pro features!

[Learn more, Memberships starting at \\$2.50/m!](#)

**Follow me
on Twitter!**

@ConvertingColor