

Converting Colors

YUV(59.3720, -4.1274, 17.2138)

Have a look what the booklet for
YUV(59.3720, -4.1274, 17.2138)
contains.

YUV(59.3720, -4.1274, 17.2138)	3
<i>Conversions</i>	4
<i>Details</i>	6
<i>Harmonies</i>	12
<i>Previews</i>	24
<i>Color Blindness Simulation</i>	28
<i>CSS Examples</i>	31

Color

**YUV(59.3720, -4.1274,
17.2138)**

Conversions

Conversions Part 1

Format	Color
Hex	4F3333
RGB	79, 51, 51
RGB Percent	31%, 20%, 20%
CMY	0.6902, 0.8000, 0.8000
CMYK	0.00, 0.35, 0.35, 0.69
HSL	0°, 22%, 25%
HSV	0°, 35%, 31%
XYZ	5.0058, 4.2689, 3.6921
YIQ	59.3720, 16.6880, 5.9360

Conversions

Conversions Part 2

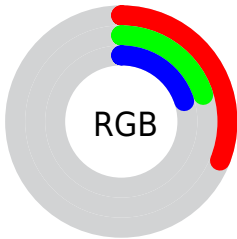
Format	Color
R_{YB}	79, 51, 51
Decimal	5190451
CIE Lab	24.54, 12.67, 5.16
CIE LCh	25, 13.685, 22.172
Yxy	4.2689, 0.3860, 0.3292
Android (android.graphics.Color)	4283380531 (0xFF4F3333)
YUV	59.3720, -4.1274, 17.2138
Hunter-Lab	20.6614, 7.0893, 3.8681

Details

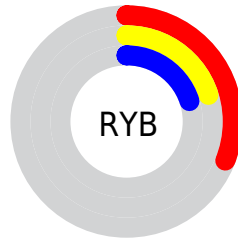
The YUV color **59.3720, -4.1274, 17.2138** is a dark color, and the websafe version is hex **663333**. A complement of this color would be **70.6280, 4.1274, -17.2138**, and the grayscale version is **59.0000, 0.0000, 0.0000**.

A 20% lighter version of the original color is **107.1550, -5.0064, 19.1581**, and **14.5570, -4.7116, 17.9285** is the 20% darker color. If you saturate the color by 10%, you get **53.7640, -5.3067, 22.1320**, and if you desaturate by 10%, it is **64.9800, -2.9481, 12.2955**.

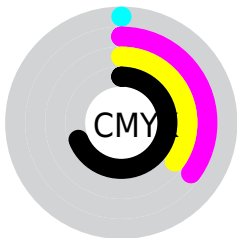
Distribution



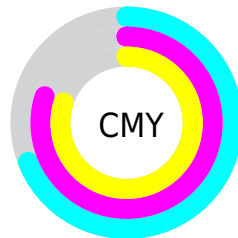
- Red (31%)
- Green (20%)
- Blue (20%)



- Red (31%)
- Yellow (20%)
- Blue (20%)



- Cyan (0%)
- Magenta (35%)
- Yellow (35%)
- Black (69%)



- Cyan (69%)
- Magenta (80%)
- Yellow (80%)

Brightness & Saturation Gradients

These gradients show how the YUV color 59.3720, -4.1274, 17.2138 changes by changing the brightness by 10 percent. The first figure shows a shift by +10% for each color and the second figure -10%.

Similar to the brightness gradients but the following saturation gradients show a change of the YUV color 59.3720, -4.1274, 17.2138 by changing the saturation by 10% instead.

■ 59.3720, -4.1274,
17.2138

■ 59.3720, -4.1274,
17.2138

■ 255.0000, 0.0000,
0.0000

■ 37.4750, -3.6852,
15.3694

■ 107.1550, -5.0064,
19.1581

■ 14.5570, -4.7116,
17.9285

■ 132.4540, -5.1538,
19.7728

■ 0.0000, 0.0000,
0.0000

■ 158.4650, -5.1592,
21.5172

■ 185.3510, -5.5960,
21.6172

■ 213.6500, -5.7434,
22.2320

■ 238.0620, -3.9746,

14.8546

■ 59.3720, -4.1274,
17.2138

■ 59.3720, -4.1274,
17.2138

■ 53.7640, -5.3067,
22.1320

■ 64.9800, -2.9481,
12.2955

■ 48.1560, -6.4859,
27.0502

■ 70.5880, -1.7689,
7.3773

■ 42.5480, -7.6652,
31.9684

■ 76.1960, -0.5896,
2.4591

■ 36.9400, -8.8444,
36.8866

■ 81.8040, 0.5896,
-2.4591

■ 32.0330, -9.8763,
41.1901

■ 87.4120, 1.7689,
-7.3773

■ 26.4250, -11.0555,
46.1083

■ 92.3190, 2.8007,
-11.6808

■ 23.6210, -11.6452,
48.5674

■ 97.9270, 3.9800,
-16.5990

■ 103.5350, 5.1592,
-21.5172

■ 109.1430, 6.3385,
-26.4354

Harmonies

Analogous

The Analogous color harmony consists of three colors that are next to each other on the color wheel.



59.9140, 0.5354, 14.9844



59.3720, -4.1274, 17.2138



58.6230, -8.1951, 15.2396

Triad

The Triadic color harmony groups three colors that are evenly spaced from another and form a triangle on the color wheel.



59.3720, -4.1274, 17.2138



55.2780, -5.0671, -8.1368



56.3710, 10.6631, -13.4804

Complementary

The Complementary color scheme is a pair of colors which are on the opposite of each other on the color wheel.



59.3720, -4.1274, 17.2138



70.6280, 4.1274, -17.2138

Split Complementary

Split-complementary colors differ from the complementary color scheme. The scheme consists of three colors, the original color and two neighbors of the complement color.



54.0880, 9.8166, -22.0022



59.3720, -4.1274, 17.2138



54.0040, 0.4910, -17.5435

Square

The Square scheme is like the rectangle color scheme, but the four colors are evenly spaced on the color wheel.



59.3720, -4.1274, 17.2138



57.0080, -8.8779, 0.8700



52.8660, 6.4751, -23.5615



58.9810, 8.8834, -2.6143

Rectangle

The Rectangle color scheme consists of four colors that form a rectangle on the color wheel.



59.3720, -4.1274, 17.2138



58.5470, -9.6367, 10.9213



52.8660, 6.4751, -23.5615



55.4630, 11.1107, -17.0691

Sweetspot

The Sweet Spot groups the original color and five complimentary colors.



59.3720, -4.1274, 17.2138



94.2890, -1.6215, 6.7625



62.5640, 8.1029, 14.4144



46.0930, -1.0318, 4.3034



179.0000, 0.0000, 0.0000



51.0000, 0.0000, 0.0000

Same Dimension

The Same Dimension uses a secret algorithm to generate beautiful new colors.



59.3720, -4.1274, 17.2138



71.1560, -6.4859, 27.0502



67.5900, -8.1789, 10.0066



35.1960, -0.5896, 2.4591



30.4980, -15.0355, 62.7073



68.7700, -33.9036, 141.3987

Inverse Universe

The Inverse Universe completely reimagines the original color for something new.



70.6280, 4.1274, -17.2138



88.8440, 6.4859, -27.0502



62.4100, 8.1789, -10.0066



36.8040, 0.5896, -2.4591



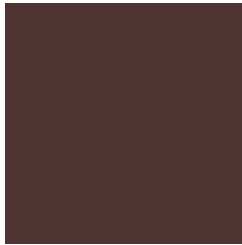
71.5020, 15.0355, -62.7073



161.2300, 33.9036, -141.3987

Previews

White Background



This preview shows how the YUV color 59.3720, -4.1274, 17.2138 looks on a white background.

Color Contrast Check

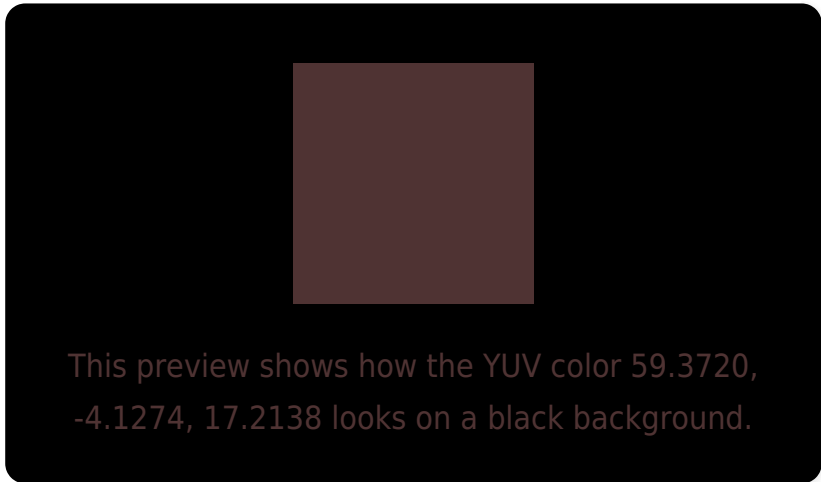
Large Text (above 18pt) WCAG AA ✓ Pass

Any Text WCAG AA ✓ Pass

Large Text (above 18pt) WCAG AAA ✓ Pass

Any Text WCAG AAA ✓ Pass

Black Background



Color Contrast Check

Large Text (above 18pt) WCAG AA × Fail

Any Text WCAG AA × Fail

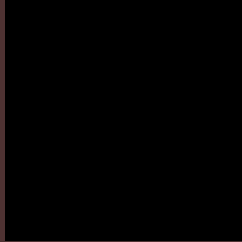
Large Text (above 18pt) WCAG AAA × Fail

Any Text WCAG AAA × Fail

If you want to check with other color combinations, try the [Color Contrast Checker](#).

YUV 59.3720, -4.1274, 17.2138

Background



This preview shows how black text looks on a background with the YUV color 59.3720, -4.1274, 17.2138.



This preview shows how white text looks on a background with the YUV color 59.3720, -4.1274,

Color Blindness Simulation

Color vision deficiency is a very complex topic, and I could not describe the different causes any better than Wikipedia does, so if you want to learn more, you should check out their [article about color blindness](#).

Dichromacy



Original Color

59.3720, -4.1274, 17.2138

Protanopia

58.5550, -1.7526, 2.1443

Deuteranopia

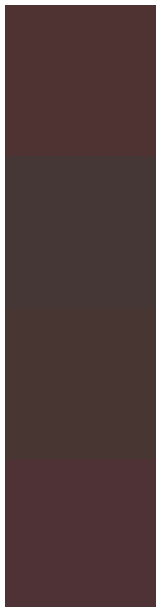
58.6050, -4.2423, 7.3624



Tritanopia

59.1270, -2.5276, 17.4286

Trichromacy



Original Color

59.3720, -4.1274, 17.2138

Protanomaly

58.7730, -2.3531, 8.0921

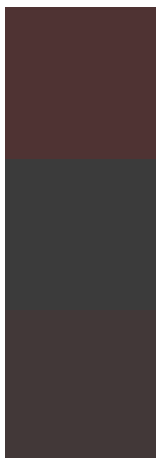
Deuteranomaly

58.6270, -4.2531, 10.8511

Tritanomaly

59.0130, -2.9644, 17.5286

Monochromacy



Original Color

59.3720, -4.1274, 17.2138

Achromatopsia

59.0000, 0.0000, 0.0000

Achromatomaly

58.9900, -1.4741, 6.1478

CSS Examples

Text

The CSS property to change the color of the text to YUV 59.3720, -4.1274, 17.2138 is called "color". The color property can be set on classes, ids or directly on the HTML element.

This example shows how text in the color `rgb(79, 51, 51)` looks like.

```
.text, #text, p{  
    color:rgb(79, 51, 51)  
}
```

If you want to add a text shadow in that color use the text-shadow property, you can generate a text shadow directly with our [CSS Text Shadow Generator](#).

Here you see how black text with a 4 pixel rgb(79, 51, 51) colored shadow looks like.

```
.shadow{ text-shadow: 4px 4px 2px rgb(79, 51, 51) }
```

Border

The CSS property to change the border of an element to YUV 59.3720, -4.1274, 17.2138 is called "border". The border property can be set on classes, ids or directly on the HTML element.

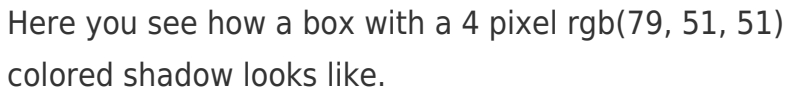
This example shows the color as border, it can be applied via the CSS property "border" or "border-color".

```
.border, #border, table{ border:4px solid rgb(79, 51, 51) }
```


If only the border color should be changed use the property `border-color`.

```
.border{ border-color:rgb(79, 51, 51) }
```

If you want to add a box shadow in that color use:



Here you see how a box with a 4 pixel `rgb(79, 51, 51)` colored shadow looks like.

```
.boxshadow{ -moz-box-shadow:4px 4px 4px  
4px rgb(79, 51, 51); -webkit-box-  
shadow:4px 4px 4px 4px rgb(79, 51, 51);  
box-shadow:4px 4px 4px 4px rgb(79, 51, 51)  
}
```

Background

The CSS property to change the background color of an element to YUV 59.3720, -4.1274, 17.2138 is called "background". The background property can be set on classes, ids or directly on the HTML element.

```
.background, #background, body{  
background: rgb(79, 51, 51) }
```

If only the background color should be changed can be used:

```
.background{ background-color: rgb(79, 51,  
51) }
```

This example shows the color as background, it is applied via the CSS property "background".

To optimize and compress your CSS code, you can use our [online CSS compressor and optimizer](#) based on csstidy. If you want to create a linear or radial gradient as background or border, check our [CSS Gradient Generator](#).

Hey! You found this booklet interesting? Support Converting Colors with the new Membership Option!

The pro membership hides all ads, plus gives you double the colors in the color bucket, and more awesome pro features!

[Learn more, Memberships starting at \\$2.50/m!](#)

**Follow me
on Twitter!**

@ConvertingColor