

Converting Colors

YUV(59.8180, -7.3053, 9.8066)

Have a look what the booklet for
YUV(59.8180, -7.3053, 9.8066)
contains.

YUV(59.8180, -7.3053, 9.8066)	3
<i>Conversions</i>	4
<i>Details</i>	6
<i>Harmonies</i>	12
<i>Previews</i>	24
<i>Color Blindness Simulation</i>	28
<i>CSS Examples</i>	31

Color

**YUV(59.8180, -7.3053,
9.8066)**

Conversions

Conversions Part 1

Format	Color
Hex	47392D
RGB	71, 57, 45
RGB Percent	28%, 22%, 18%
CMY	0.7216, 0.7765, 0.8235
CMYK	0.00, 0.20, 0.37, 0.72
HSL	28°, 22%, 23%
HSV	28°, 37%, 28%
XYZ	4.5353, 4.4553, 3.1035
YIQ	59.8180, 12.1960, -0.7640

Conversions

Conversions Part 2

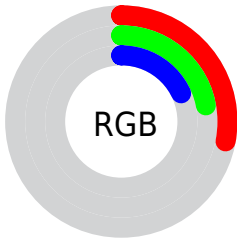
Format	Color
R_{YB}	71, 67, 45
Decimal	4667693
CIE Lab	25.12, 4.10, 9.81
CIE LCh	25, 10.630, 67.315
Yxy	4.4553, 0.3750, 0.3684
Android (android.graphics.Color)	4282857773 (0xFF47392D)
YUV	59.8180, -7.3053, 9.8066
Hunter-Lab	21.1076, 1.4153, 6.0576

Details

The YUV color **59.8180, -7.3053, 9.8066** is a dark color, and the websafe version is hex **333333**. A complement of this color would be **56.1820, 7.3053, -9.8066**, and the grayscale version is **60.0000, 0.0000, 0.0000**.

A 20% lighter version of the original color is **107.3020, -8.0369, 11.1361**, and **16.8890, -8.3263, 10.6213** is the 20% darker color. If you saturate the color by 10%, you get **56.6720, -9.2053, 12.5657**, and if you desaturate by 10%, it is **62.9640, -5.4053, 7.0476**.

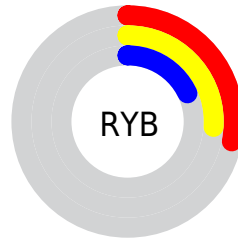
Distribution



Red (28%)

Green (22%)

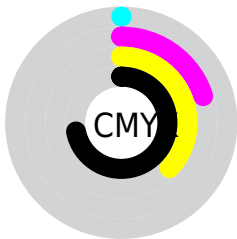
Blue (18%)



Red (28%)

Yellow (26%)

Blue (18%)

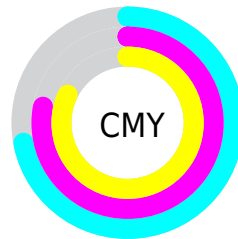


Cyan (0%)

Magenta (20%)

Yellow (37%)

Black (72%)



Cyan (72%)

Magenta (78%)

Yellow (82%)

Brightness & Saturation Gradients

These gradients show how the YUV color 59.8180, -7.3053, 9.8066 changes by changing the brightness by 10 percent. The first figure shows a shift by +10% for each color and the second figure -10%.

Similar to the brightness gradients but the following saturation gradients show a change of the YUV color 59.8180, -7.3053, 9.8066 by changing the saturation by 10% instead.

■ 59.8180, -7.3053,
9.8066

■ 59.8180, -7.3053,
9.8066

255.0000, 0.0000,
0.0000

■ 38.2200, -7.0105,
8.5771

■ 107.3020, -8.0369,
11.1361

■ 16.8890, -8.3263,
10.6213

■ 132.4870, -8.6211,
11.8509

■ 0.0000, 0.0000,
0.0000

■ 158.7860, -8.7685,
12.4657

■ 185.6720, -9.2053,
12.5657

■ 212.9710, -9.3527,
13.1804

■ 241.2590, -9.4947,

12.0509

254.5440, -1.7472,
0.3999

■ 59.8180, -7.3053,
9.8066

■ 59.8180, -7.3053,
9.8066

■ 56.6720, -9.2053,
12.5657

■ 62.9640, -5.4053,
7.0476

■ 53.5260, -11.1053,
15.3247

■ 66.1100, -3.5052,
4.2885

■ 50.9670, -13.2947,
17.5689

■ 68.6690, -1.3158,
2.0443

■ 47.8210, -15.1948,
20.3280

■ 71.8150, 0.5842,
-0.7148

■ 44.6750, -17.0948,
23.0870

■ 75.0750, 2.9210,
-3.5738

■ 41.4150, -19.4316,
25.9460

■ 78.2210, 4.8210,
-6.3328

■ 40.6000, -20.0158,
26.6608

■ 81.3670, 6.7211,
-9.0919

■ 84.5130, 8.6211,
-11.8509

■ 87.0720, 10.8105,
-14.0951

Harmonies

Analogous

The Analogous color harmony consists of three colors that are next to each other on the color wheel.



60.4100, -5.1321, 12.7954



59.8180, -7.3053, 9.8066



59.3720, -7.5784, 4.0588

Triad

The Triadic color harmony groups three colors that are evenly spaced from another and form a triangle on the color wheel.



59.8180, -7.3053, 9.8066



56.1830, 2.3748, -15.0695



60.5040, 5.6675, 2.1890

Complementary

The Complementary color scheme is a pair of colors which are on the opposite of each other on the color wheel.



59.8180, -7.3053, 9.8066



56.1820, 7.3053, -9.8066

Split Complementary

Split-complementary colors differ from the complementary color scheme. The scheme consists of three colors, the original color and two neighbors of the complement color.



59.6170, 7.5838, -5.8031



59.8180, -7.3053, 9.8066



56.4970, 6.1640, -17.0989

Square

The Square scheme is like the rectangle color scheme, but the four colors are evenly spaced on the color wheel.



59.8180, -7.3053, 9.8066



57.3640, -2.1515, -9.9662



57.6870, 8.0423, -12.8805



61.3370, 2.2989, 9.3515

Rectangle

The Rectangle color scheme consists of four colors that form a rectangle on the color wheel.



59.8180, -7.3053, 9.8066



58.2790, -6.5465, -0.2447



57.6870, 8.0423, -12.8805



60.4220, 6.6940, -0.3701

Sweetspot

The Sweet Spot groups the original color and five complimentary colors.



59.8180, -7.3053, 9.8066



87.3380, -2.6316, 4.0886



54.3700, 2.2826, 14.5845



43.5550, -1.7526, 2.1443



173.0000, 0.0000, 0.0000



46.0000, 0.0000, 0.0000

Same Dimension

The Same Dimension uses a secret algorithm to generate beautiful new colors.



59.8180, -7.3053, 9.8066



74.4120, -11.5421, 15.4247



67.4490, -11.0674, 3.1142



34.3700, -1.1684, 1.4295



56.6030, -27.9053, 37.1822



129.5080, -63.8474, 85.5005

Inverse Universe

The Inverse Universe completely reimagines the original color for something new.



56.1820, 7.3053, -9.8066



68.5880, 11.5421, -15.4247



48.5510, 11.0674, -3.1142



33.6300, 1.1684, -1.4295



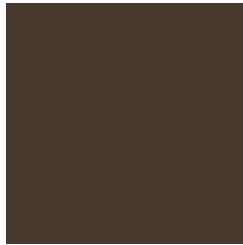
42.9840, 27.6159, -37.6970



97.4920, 63.8474, -85.5005

Previews

White Background



This preview shows how the YUV color 59.8180, -7.3053, 9.8066 looks on a white background.

Color Contrast Check

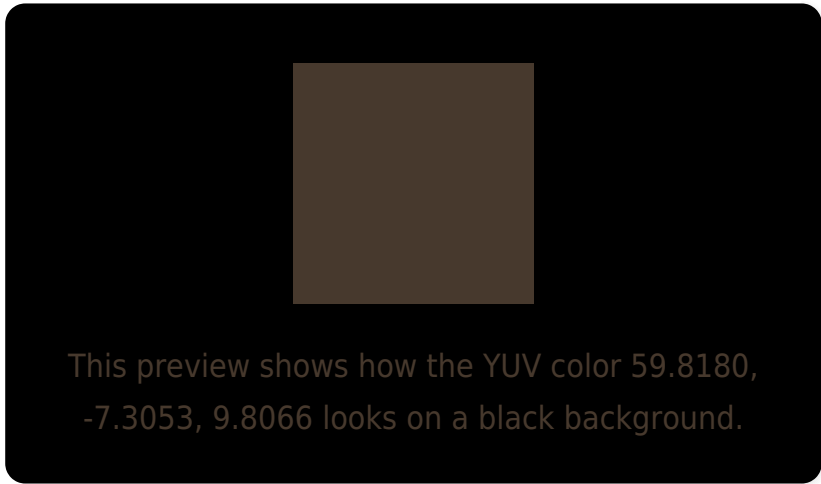
Large Text (above 18pt) WCAG AA ✓ Pass

Any Text WCAG AA ✓ Pass

Large Text (above 18pt) WCAG AAA ✓ Pass

Any Text WCAG AAA ✓ Pass

Black Background



Color Contrast Check

Large Text (above 18pt) WCAG AA × Fail

Any Text WCAG AA × Fail

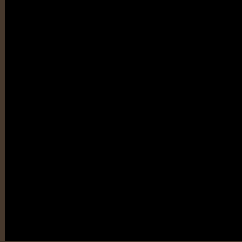
Large Text (above 18pt) WCAG AAA × Fail

Any Text WCAG AAA × Fail

If you want to check with other color combinations, try the [Color Contrast Checker](#).

YUV 59.8180, -7.3053, 9.8066

Background



This preview shows how black text looks on a background with the YUV color 59.8180, -7.3053, 9.8066.



This preview shows how white text looks on a background with the YUV color 59.8180, -7.3053,

Color Blindness Simulation

Color vision deficiency is a very complex topic, and I could not describe the different causes any better than Wikipedia does, so if you want to learn more, you should check out their [article about color blindness](#).

Dichromacy



Original Color

59.8180, -7.3053, 9.8066

Protanopia

59.6000, -6.7048, 3.8588

Deuteranopia

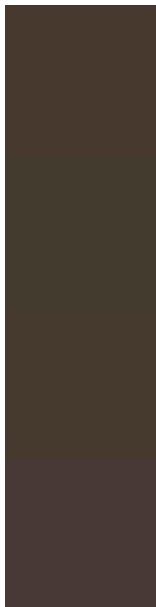
59.5190, -7.1579, 9.1918



Tritanopia

60.5390, -0.7587, 10.0513

Trichromacy



Original Color

59.8180, -7.3053, 9.8066

Protanomaly

59.9100, -6.8576, 6.2179

Deuteranomaly

59.5190, -7.1579, 9.1918

Tritanomaly

60.5560, -3.2321, 10.0364

Monochromacy



Original Color

59.8180, -7.3053, 9.8066

Achromatopsia

60.0000, 0.0000, 0.0000

Achromatomaly

60.0390, -2.4842, 3.4738

CSS Examples

Text

The CSS property to change the color of the text to YUV 59.8180, -7.3053, 9.8066 is called "color". The color property can be set on classes, ids or directly on the HTML element.

This example shows how text in the color `rgb(71, 57, 45)` looks like.

```
.text, #text, p{  
    color:rgb(71, 57, 45)  
}
```

If you want to add a text shadow in that color use the text-shadow property, you can generate a text shadow directly with our [CSS Text Shadow Generator](#).

Here you see how black text with a 4 pixel rgb(71, 57, 45) colored shadow looks like.

```
.shadow{ text-shadow: 4px 4px 2px rgb(71, 57, 45) }
```

Border

The CSS property to change the border of an element to YUV 59.8180, -7.3053, 9.8066 is called "border". The border property can be set on classes, ids or directly on the HTML element.

This example shows the color as border, it can be applied via the CSS property "border" or "border-color".

```
.border, #border, table{ border:4px solid rgb(71, 57, 45) }
```


If only the border color should be changed use the property `border-color`.

```
.border{ border-color:rgb(71, 57, 45) }
```

If you want to add a box shadow in that color use:

Here you see how a box with a 4 pixel `rgb(71, 57, 45)` colored shadow looks like.

```
.boxshadow{ -moz-box-shadow:4px 4px 4px  
4px rgb(71, 57, 45); -webkit-box-  
shadow:4px 4px 4px 4px rgb(71, 57, 45);  
box-shadow:4px 4px 4px 4px rgb(71, 57, 45)  
}
```

Background

The CSS property to change the background color of an element to YUV 59.8180, -7.3053, 9.8066 is called "background". The background property can be set on classes, ids or directly on the HTML element.

```
.background, #background, body{  
background: rgb(71, 57, 45) }
```

If only the background color should be changed can be used:

```
.background{ background-color: rgb(71, 57,  
45) }
```

This example shows the color as background, it is applied via the CSS property "background".

To optimize and compress your CSS code, you can use our [online CSS compressor and optimizer](#) based on csstidy. If you want to create a linear or radial gradient as background or border, check our [CSS Gradient Generator](#).

Hey! You found this booklet interesting? Support Converting Colors with the new Membership Option!

The pro membership hides all ads, plus gives you double the colors in the color bucket, and more awesome pro features!

[Learn more, Memberships starting at \\$2.50/m!](#)

**Follow me
on Twitter!**

@ConvertingColor