

Converting Colors

YUV(62.7320, -6.7699, 24.7910)

Have a look what the booklet for
YUV(62.7320, -6.7699, 24.7910)
contains.

YUV(62.7320, -6.7699, 24.7910)	3
<i>Conversions</i>	4
<i>Details</i>	6
<i>Harmonies</i>	12
<i>Previews</i>	24
<i>Color Blindness Simulation</i>	28
<i>CSS Examples</i>	31

Color

**YUV(62.7320, -6.7699,
24.7910)**

Conversions

Conversions Part 1

Format	Color
Hex	5B3331
RGB	91, 51, 49
RGB Percent	36%, 20%, 19%
CMY	0.6431, 0.8000, 0.8078
CMYK	0.00, 0.44, 0.46, 0.64
HSL	3°, 30%, 27%
HSV	3°, 46%, 36%
XYZ	6.0526, 4.8136, 3.5158
YIQ	62.7320, 24.4820, 7.8580

Conversions

Conversions Part 2

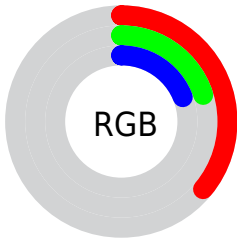
Format	Color
R_YB	91, 51, 49
Decimal	5976881
CIE Lab	26.20, 17.78, 9.07
CIE LCh	26, 19.961, 27.013
Yxy	4.8136, 0.4208, 0.3347
Android (android.graphics.Color)	4284166961 (0xFF5B3331)
YUV	62.7320, -6.7699, 24.7910
Hunter-Lab	21.9398, 10.8486, 5.8567

Details

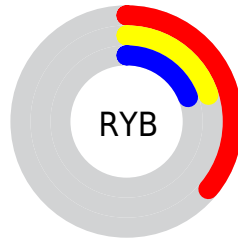
The YUV color **62.7320, -6.7699, 24.7910** is a dark color, and the websafe version is hex **663333**. A complement of this color would be **77.2680, 6.7699, -24.7910**, and the grayscale version is **63.0000, 0.0000, 0.0000**.

A 20% lighter version of the original color is **111.1130, -7.9437, 27.9649**, and **17.3790, -8.0748, 23.3466** is the 20% darker color. If you saturate the color by 10%, you get **56.4230, -8.0965, 30.3240**, and if you desaturate by 10%, it is **69.0410, -5.4432, 19.2580**.

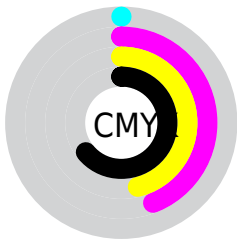
Distribution



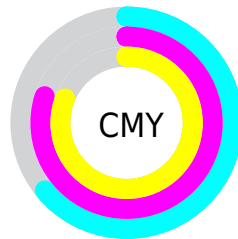
- Red (36%)
- Green (20%)
- Blue (19%)



- Red (36%)
- Yellow (20%)
- Blue (19%)



- Cyan (0%)
- Magenta (44%)
- Yellow (46%)
- Black (64%)



- Cyan (64%)
- Magenta (80%)
- Yellow (81%)

Brightness & Saturation Gradients

These gradients show how the YUV color 62.7320, -6.7699, 24.7910 changes by changing the brightness by 10 percent. The first figure shows a shift by +10% for each color and the second figure -10%.

Similar to the brightness gradients but the following saturation gradients show a change of the YUV color 62.7320, -6.7699, 24.7910 by changing the saturation by 10% instead.

■ 62.7320, -6.7699,
24.7910

■ 62.7320, -6.7699,
24.7910

■ 255.0000, 0.0000,
0.0000

■ 39.9490, -5.8909,
22.8467

■ 111.1130, -7.9437,
27.9649

■ 17.3790, -8.0748,
23.3466

■ 136.7110, -8.2385,
29.1945

■ 1.1960, -0.5896,
2.4591

■ 163.1950, -8.9701,
30.5240

■ 0.0000, 0.0000,
0.0000

■ 190.4940, -9.1175,
31.1388

■ 218.0920, -9.4124,
32.3683

■ 238.3070, -5.5744,

14.6398

■ 62.7320, -6.7699,
24.7910

■ 62.7320, -6.7699,
24.7910

■ 56.4230, -8.0965,
30.3240

■ 69.0410, -5.4432,
19.2580

■ 50.7010, -9.7126,
35.3422

■ 74.7630, -3.8272,
14.2398

■ 44.3920, -11.0393,
40.8752

■ 81.0720, -2.5005,
8.7069

■ 38.0830, -12.3659,
46.4082

■ 87.3810, -1.1738,
3.1739

■ 32.2470, -14.4188,
51.5264

■ 93.2170, 0.8790,
-1.9443

■ 29.5570, -14.5716,
53.8855

■ 99.5260, 2.2057,
-7.4773

■ 105.8350, 3.5323,
-13.0103

■ 111.5570, 5.1484,
-18.0285

■ 117.8660, 6.4751,
-23.5615

Harmonies

Analogous

The Analogous color harmony consists of three colors that are next to each other on the color wheel.



63.5560, 0.2189, 23.1914



62.7320, -6.7699, 24.7910



61.9180, -12.2846, 20.2429

Triad

The Triadic color harmony groups three colors that are evenly spaced from another and form a triangle on the color wheel.



62.7320, -6.7699, 24.7910



57.0060, -5.9190, -14.9143



58.8200, 16.3577, -20.0131

Complementary

The Complementary color scheme is a pair of colors which are on the opposite of each other on the color wheel.



62.7320, -6.7699, 24.7910



77.2680, 6.7699, -24.7910

Split Complementary

Split-complementary colors differ from the complementary color scheme. The scheme consists of three colors, the original color and two neighbors of the complement color.



50.4320, 18.0280, -42.4749



62.7320, -6.7699, 24.7910



53.0130, 3.4446, -31.5834

Square

The Square scheme is like the rectangle color scheme, but the four colors are evenly spaced on the color wheel.



62.7320, -6.7699, 24.7910



59.3730, -12.5089, -1.2041



49.6400, 12.5025, -43.5343



63.0180, 12.8091, -1.7698

Rectangle

The Rectangle color scheme consists of four colors that form a rectangle on the color wheel.



62.7320, -6.7699, 24.7910



61.6030, -14.5943, 14.3802



49.6400, 12.5025, -43.5343



56.3030, 17.1056, -26.5757

Sweetspot

The Sweet Spot groups the original color and five complimentary colors.



62.7320, -6.7699, 24.7910



106.3710, -2.6479, 9.3216



66.2320, 11.7176, 21.7215



51.9900, -1.4741, 6.1478



186.0000, 0.0000, 0.0000



59.0000, 0.0000, 0.0000

Same Dimension

The Same Dimension uses a secret algorithm to generate beautiful new colors.



62.7320, -6.7699, 24.7910



73.8970, -10.3022, 37.8013



74.4720, -12.5577, 14.4951



43.0820, -1.0264, 2.5591



35.8250, -17.6617, 65.0515



77.3200, -38.1188, 140.0394

Inverse Universe

The Inverse Universe completely reimagines the original color for something new.



77.2680, 6.7699, -24.7910



96.1030, 10.3022, -37.8013



65.5280, 12.5577, -14.4951



44.5050, 0.7370, -3.0739



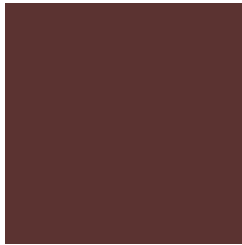
73.5880, 17.9511, -64.5367



159.6800, 38.1188, -140.0394

Previews

White Background



This preview shows how the YUV color 62.7320, -6.7699, 24.7910 looks on a white background.

Color Contrast Check

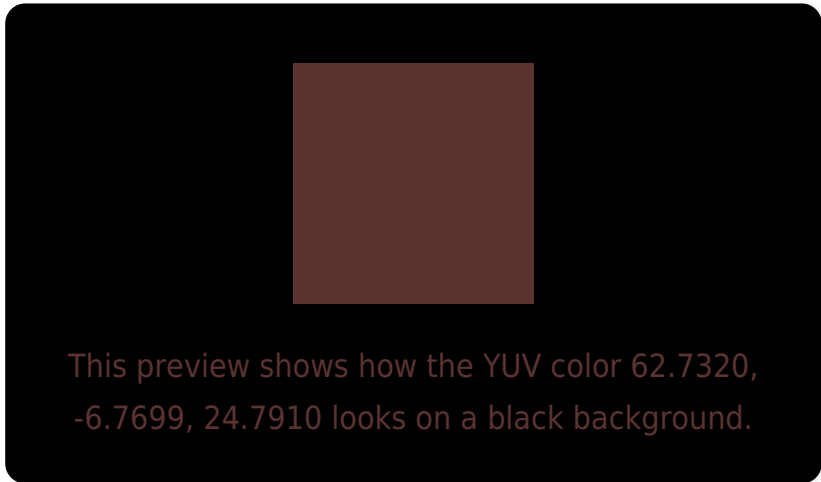
Large Text (above 18pt) WCAG AA ✓ Pass

Any Text WCAG AA ✓ Pass

Large Text (above 18pt) WCAG AAA ✓ Pass

Any Text WCAG AAA ✓ Pass

Black Background



Color Contrast Check

Large Text (above 18pt) WCAG AA × Fail

Any Text WCAG AA × Fail

Large Text (above 18pt) WCAG AAA × Fail

Any Text WCAG AAA × Fail

If you want to check with other color combinations, try the [Color Contrast Checker](#).

YUV 62.7320, -6.7699, 24.7910

Background



This preview shows how black text looks on a background with the YUV color 62.7320, -6.7699, 24.7910.

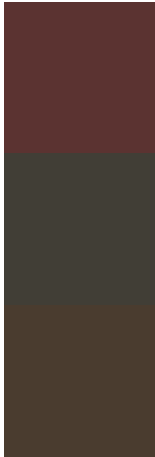


This preview shows how white text looks on a background with the YUV color 62.7320, -6.7699,

Color Blindness Simulation

Color vision deficiency is a very complex topic, and I could not describe the different causes any better than Wikipedia does, so if you want to learn more, you should check out their [article about color blindness](#).

Dichromacy



Original Color

62.7320, -6.7699, 24.7910

Protanopia

61.9850, -3.9366, 2.6442

Deuteranopia

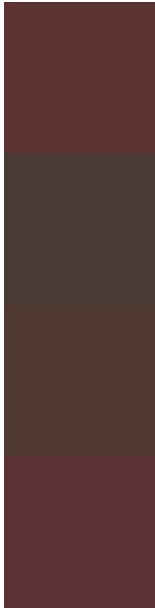
62.7040, -7.7421, 9.9066



Tritanopia

62.7150, -4.2965, 24.8059

Trichromacy



Original Color

62.7320, -6.7699, 24.7910

Protanomaly

62.1000, -4.9793, 10.4363

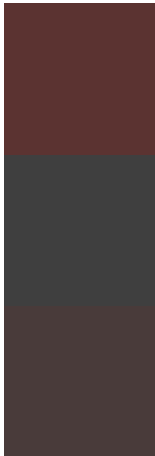
Deuteranomaly

62.8510, -7.3215, 15.0397

Tritanomaly

62.4870, -5.1701, 25.0059

Monochromacy



Original Color

62.7320, -6.7699, 24.7910

Achromatopsia

63.0000, 0.0000, 0.0000

Achromatomaly

63.0720, -2.5005, 8.7069

CSS Examples

Text

The CSS property to change the color of the text to YUV 62.7320, -6.7699, 24.7910 is called "color". The color property can be set on classes, ids or directly on the HTML element.

This example shows how text in the color `rgb(91, 51, 49)` looks like.

```
.text, #text, p{  
    color:rgb(91, 51, 49)  
}
```

If you want to add a text shadow in that color use the text-shadow property, you can generate a text shadow directly with our [CSS Text Shadow Generator](#).

Here you see how black text with a 4 pixel rgb(91, 51, 49) colored shadow looks like.

```
.shadow{ text-shadow: 4px 4px 2px rgb(91, 51, 49) }
```

Border

The CSS property to change the border of an element to YUV 62.7320, -6.7699, 24.7910 is called "border". The border property can be set on classes, ids or directly on the HTML element.

This example shows the color as border, it can be applied via the CSS property "border" or "border-color".

```
.border, #border, table{ border:4px solid rgb(91, 51, 49) }
```


If only the border color should be changed use the property `border-color`.

```
.border{ border-color:rgb(91, 51, 49) }
```

If you want to add a box shadow in that color use:

Here you see how a box with a 4 pixel `rgb(91, 51, 49)` colored shadow looks like.

```
.boxshadow{ -moz-box-shadow:4px 4px 4px  
4px rgb(91, 51, 49); -webkit-box-  
shadow:4px 4px 4px 4px rgb(91, 51, 49);  
box-shadow:4px 4px 4px 4px rgb(91, 51, 49)  
}
```

Background

The CSS property to change the background color of an element to YUV 62.7320, -6.7699, 24.7910 is called "background". The background property can be set on classes, ids or directly on the HTML element.

```
.background, #background, body{  
background: rgb(91, 51, 49) }
```

If only the background color should be changed can be used:

```
.background{ background-color: rgb(91, 51,  
49) }
```

This example shows the color as background, it is applied via the CSS property "background".

To optimize and compress your CSS code, you can use our [online CSS compressor and optimizer](#) based on csstidy. If you want to create a linear or radial gradient as background or border, check our [CSS Gradient Generator](#).

Hey! You found this booklet interesting? Support Converting Colors with the new Membership Option!

The pro membership hides all ads, plus gives you double the colors in the color bucket, and more awesome pro features!

[Learn more, Memberships starting at \\$2.50/m!](#)

**Follow me
on Twitter!**

@ConvertingColor