

Converting Colors

YUV(63.2690, -4.5696, 19.0581)

Have a look what the booklet for
YUV(63.2690, -4.5696, 19.0581)
contains.

YUV(63.2690, -4.5696, 19.0581)	3
<i>Conversions</i>	4
<i>Details</i>	6
<i>Harmonies</i>	12
<i>Previews</i>	24
<i>Color Blindness Simulation</i>	28
<i>CSS Examples</i>	31

Color

**YUV(63.2690, -4.5696,
19.0581)**

Conversions

Conversions Part 1

Format	Color
Hex	553636
RGB	85, 54, 54
RGB Percent	33%, 21%, 21%
CMY	0.6667, 0.7882, 0.7882
CMYK	0.00, 0.36, 0.36, 0.67
HSL	0°, 22%, 27%
HSV	0°, 36%, 33%
XYZ	5.7313, 4.8360, 4.1214
YIQ	63.2690, 18.4760, 6.5720

Conversions

Conversions Part 2

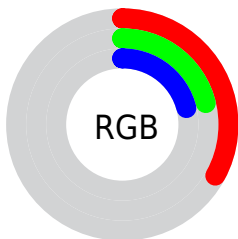
Format	Color
R_YB	85, 54, 54
Decimal	5584438
CIE Lab	26.26, 13.90, 5.71
CIE LCh	26, 15.033, 22.341
Yxy	4.8360, 0.3902, 0.3292
Android (android.graphics.Color)	4283774518 (0xFF553636)
YUV	63.2690, -4.5696, 19.0581
Hunter-Lab	21.9908, 8.0374, 4.2818

Details

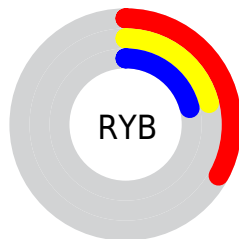
The YUV color **63.2690, -4.5696, 19.0581** is a dark color, and the websafe version is hex **663333**. A complement of this color would be **75.7310, 4.5696, -19.0581**, and the grayscale version is **63.0000, 0.0000, 0.0000**.

A 20% lighter version of the original color is **111.4650, -5.1592, 21.5172**, and **19.2580, -4.5642, 17.3137** is the 20% darker color. If you saturate the color by 10%, you get **57.6610, -5.7489, 23.9763**, and if you desaturate by 10%, it is **68.8770, -3.3904, 14.1399**.

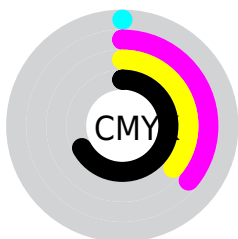
Distribution



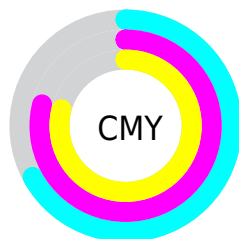
- Red (33%)
- Green (21%)
- Blue (21%)



- Red (33%)
- Yellow (21%)
- Blue (21%)



- Cyan (0%)
- Magenta (36%)
- Yellow (36%)
- Black (67%)



- Cyan (67%)
- Magenta (79%)
- Yellow (79%)

Brightness & Saturation Gradients

These gradients show how the YUV color 63.2690, -4.5696, 19.0581 changes by changing the brightness by 10 percent. The first figure shows a shift by +10% for each color and the second figure -10%.

Similar to the brightness gradients but the following saturation gradients show a change of the YUV color 63.2690, -4.5696, 19.0581 by changing the saturation by 10% instead.

63.2690, -4.5696,
19.0581

63.2690, -4.5696,
19.0581

255.0000, 0.0000,
0.0000

40.7850, -3.8380,
17.7286

111.4650, -5.1592,
21.5172

19.2580, -4.5642,
17.3137

136.7640, -5.3067,
22.1320

0.0000, 0.0000,
0.0000

163.2480, -6.0383,
23.4615

190.5470, -6.1857,
24.0763

218.8460, -6.3331,
24.6911

240.8660, -3.3849,

12.3955

■ 63.2690, -4.5696,
19.0581

■ 63.2690, -4.5696,
19.0581

■ 57.6610, -5.7489,
23.9763

■ 68.8770, -3.3904,
14.1399

■ 51.3520, -7.0755,
29.5093

■ 75.1860, -2.0637,
8.6069

■ 45.0430, -8.4022,
35.0423

■ 80.7940, -0.8844,
3.6887

■ 39.4350, -9.5815,
39.9605

■ 87.1030, 0.4422,
-1.8443

■ 33.1260, -10.9081,
45.4935

■ 92.7110, 1.6215,
-6.7625

■ 27.5180, -12.0874,
50.4117

■ 99.0200, 2.9481,
-12.2955

■ 25.4150, -12.5296,
52.2560

■ 105.3290, 4.2748,
-17.8285

■ 110.9370, 5.4541,
-22.7467

■ 116.5450, 6.6333,
-27.6650

Harmonies

Analogous

The Analogous color harmony consists of three colors that are next to each other on the color wheel.



64.0390, 0.9668, 16.6288



63.2690, -4.5696, 19.0581



62.6940, -9.2161, 16.0544

Triad

The Triadic color harmony groups three colors that are evenly spaced from another and form a triangle on the color wheel.



63.2690, -4.5696, 19.0581



59.1530, -5.4984, -9.7812



60.1150, 12.2683, -15.0099

Complementary

The Complementary color scheme is a pair of colors which are on the opposite of each other on the color wheel.



63.2690, -4.5696, 19.0581



75.7310, 4.5696, -19.0581

Split Complementary

Split-complementary colors differ from the complementary color scheme. The scheme consists of three colors, the original color and two neighbors of the complement color.



56.8210, 11.4272, -25.2760



63.2690, -4.5696, 19.0581



57.1070, 0.9332, -19.3878

Square

The Square scheme is like the rectangle color scheme, but the four colors are evenly spaced on the color wheel.



63.2690, -4.5696, 19.0581



60.4810, -9.6041, 0.4552



55.6700, 7.0647, -26.0206



62.6220, 10.0464, -2.2995

Rectangle

The Rectangle color scheme consists of four colors that form a rectangle on the color wheel.



63.2690, -4.5696, 19.0581



62.0310, -10.3683, 12.2508



55.6700, 7.0647, -26.0206



58.7940, 12.4266, -19.1133

Sweetspot

The Sweet Spot groups the original color and five complimentary colors.



63.2690, -4.5696, 19.0581



101.5880, -1.7689, 7.3773



66.8030, 8.9711, 15.9588



51.0930, -1.0318, 4.3034



184.0000, 0.0000, 0.0000



56.0000, 0.0000, 0.0000

Same Dimension

The Same Dimension uses a secret algorithm to generate beautiful new colors.



63.2690, -4.5696, 19.0581



75.6510, -7.2229, 30.1241



72.0740, -8.9105, 11.3361



40.1960, -0.5896, 2.4591



31.9930, -15.7725, 65.7811



70.2650, -34.6406, 144.4726

Inverse Universe

The Inverse Universe completely reimagines the original color for something new.



75.7310, 4.5696, -19.0581



95.3490, 7.2229, -30.1241



66.3390, 9.1999, -10.8213



41.8040, 0.5896, -2.4591



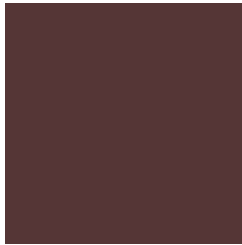
75.0070, 15.7725, -65.7811



164.7350, 34.6406, -144.4726

Previews

White Background



This preview shows how the YUV color 63.2690, -4.5696, 19.0581 looks on a white background.

Color Contrast Check

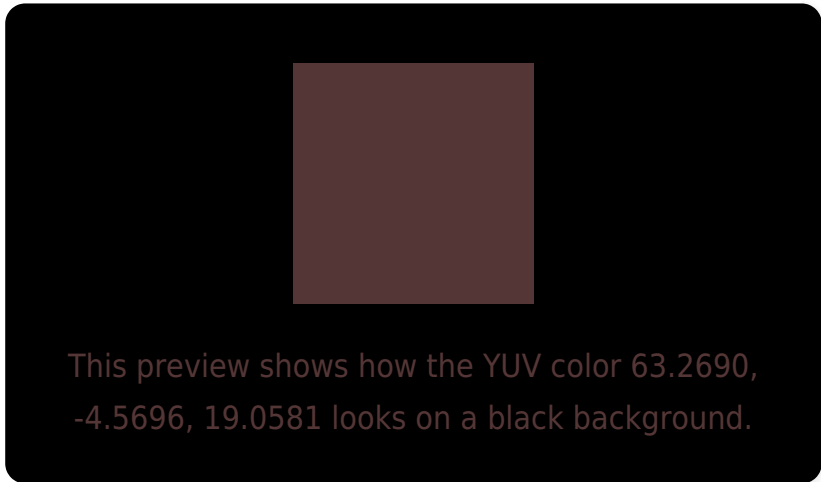
Large Text (above 18pt) WCAG AA ✓ Pass

Any Text WCAG AA ✓ Pass

Large Text (above 18pt) WCAG AAA ✓ Pass

Any Text WCAG AAA ✓ Pass

Black Background



Color Contrast Check

Large Text (above 18pt) WCAG AA × Fail

Any Text WCAG AA × Fail

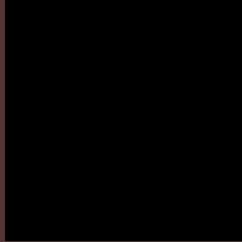
Large Text (above 18pt) WCAG AAA × Fail

Any Text WCAG AAA × Fail

If you want to check with other color combinations, try the [Color Contrast Checker](#).

YUV 63.2690, -4.5696, 19.0581

Background



This preview shows how black text looks on a background with the YUV color 63.2690, -4.5696, 19.0581.

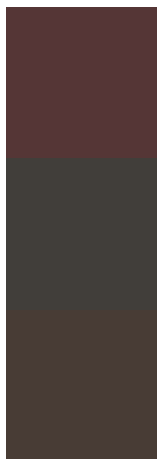


This preview shows how white text looks on a background with the YUV color 63.2690, -4.5696,

Color Blindness Simulation

Color vision deficiency is a very complex topic, and I could not describe the different causes any better than Wikipedia does, so if you want to learn more, you should check out their [article about color blindness](#).

Dichromacy



Original Color

63.2690, -4.5696, 19.0581

Protanopia

62.4410, -2.1894, 2.2442

Deuteranopia

62.7900, -4.8265, 8.0772



Tritanopia

63.0240, -2.9698, 19.2730

Trichromacy



Original Color

63.2690, -4.5696, 19.0581

Protanomaly

62.6590, -2.7899, 8.1921

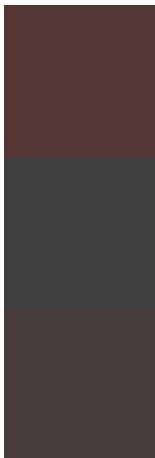
Deuteranomaly

63.1110, -4.9847, 12.1807

Tritanomaly

62.9100, -3.4066, 19.3729

Monochromacy



Original Color

63.2690, -4.5696, 19.0581

Achromatopsia

63.0000, 0.0000, 0.0000

Achromatomaly

63.2890, -1.6215, 6.7625

CSS Examples

Text

The CSS property to change the color of the text to YUV 63.2690, -4.5696, 19.0581 is called "color". The color property can be set on classes, ids or directly on the HTML element.

This example shows how text in the color `rgb(85, 54, 54)` looks like.

```
.text, #text, p{  
    color:rgb(85, 54, 54)  
}
```

If you want to add a text shadow in that color use the text-shadow property, you can generate a text shadow directly with our [CSS Text Shadow Generator](#).

Here you see how black text with a 4 pixel rgb(85, 54, 54) colored shadow looks like.

```
.shadow{ text-shadow: 4px 4px 2px rgb(85, 54, 54) }
```

Border

The CSS property to change the border of an element to YUV 63.2690, -4.5696, 19.0581 is called "border". The border property can be set on classes, ids or directly on the HTML element.

This example shows the color as border, it can be applied via the CSS property "border" or "border-color".

```
.border, #border, table{ border:4px solid rgb(85, 54, 54) }
```


If only the border color should be changed use the property `border-color`.

```
.border{ border-color:rgb(85, 54, 54) }
```

If you want to add a box shadow in that color use:

Here you see how a box with a 4 pixel `rgb(85, 54, 54)` colored shadow looks like.

```
.boxshadow{ -moz-box-shadow:4px 4px 4px  
4px rgb(85, 54, 54); -webkit-box-  
shadow:4px 4px 4px 4px rgb(85, 54, 54);  
box-shadow:4px 4px 4px 4px rgb(85, 54, 54)  
}
```

Background

The CSS property to change the background color of an element to YUV 63.2690, -4.5696, 19.0581 is called "background". The background property can be set on classes, ids or directly on the HTML element.

```
.background, #background, body{  
background: rgb(85, 54, 54) }
```

If only the background color should be changed can be used:

```
.background{ background-color: rgb(85, 54,  
54) }
```

This example shows the color as background, it is applied via the CSS property "background".

To optimize and compress your CSS code, you can use our [online CSS compressor and optimizer](#) based on csstidy. If you want to create a linear or radial gradient as background or border, check our [CSS Gradient Generator](#).

Hey! You found this booklet interesting? Support Converting Colors with the new Membership Option!

The pro membership hides all ads, plus gives you double the colors in the color bucket, and more awesome pro features!

[Learn more, Memberships starting at \\$2.50/m!](#)

**Follow me
on Twitter!**

@ConvertingColor