

# Converting Colors

YUV(63.8170, -2.3748, 15.0695)

Have a look what the booklet for  
YUV(63.8170, -2.3748, 15.0695)  
contains.

<b>YUV(63.8170, -2.3748, 15.0695)</b> .....	3
<b><i>Conversions</i></b> .....	4
<b><i>Details</i></b> .....	6
<b><i>Harmonies</i></b> .....	12
<b><i>Previews</i></b> .....	24
<b><i>Color Blindness Simulation</i></b> .....	28
<b><i>CSS Examples</i></b> .....	31

# Color

**YUV(63.8170, -2.3748,  
15.0695)**

# Conversions

## Conversions Part 1

<b>Format</b>	<b>Color</b>
Hex	51383B
RGB	81, 56, 59
RGB Percent	32%, 22%, 23%
CMY	0.6824, 0.7804, 0.7686
CMYK	0.00, 0.31, 0.27, 0.68
HSL	353°, 18%, 27%
HSV	353°, 31%, 32%
XYZ	5.5969, 4.8934, 4.7872
YIQ	63.8170, 13.9370, 6.2330

# Conversions

## Conversions Part 2

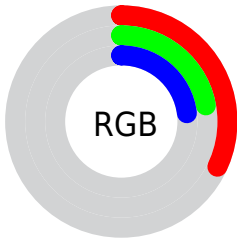
<b>Format</b>	<b>Color</b>
<b>R<sub>YB</sub></b>	81, 56, 59
Decimal	5322811
CIE <sub>Lab</sub>	26.43, 11.64, 2.56
CIE <sub>LCh</sub>	26, 11.920, 12.424
Yxy	4.8934, 0.3663, 0.3203
Android (android.graphics.Color)	4283512891 (0xFF51383B)
YUV	63.8170, -2.3748, 15.0695
Hunter-Lab	22.1211, 6.4508, 2.6539

# Details

The YUV color **63.8170, -2.3748, 15.0695** is a dark color, and the websafe version is hex **333333**. A complement of this color would be **73.1830, 2.3748, -15.0695**, and the grayscale version is **64.0000, 0.0000, 0.0000**.

A 20% lighter version of the original color is **111.7140, -2.8170, 16.9138**, and **20.8060, -2.3694, 13.3251** is the 20% darker color. If you saturate the color by 10%, you get **58.3230, -3.1172, 19.8877**, and if you desaturate by 10%, it is **69.3110, -1.6323, 10.2513**.

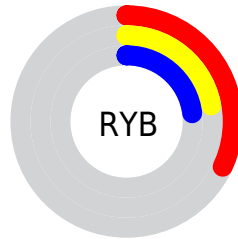
# Distribution



 Red (32%)

 Green (22%)

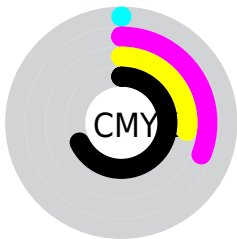
 Blue (23%)



 Red (32%)

 Yellow (22%)

 Blue (23%)

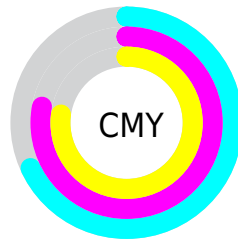


 Cyan (0%)

 Magenta (31%)

 Yellow (27%)

 Black (68%)



 Cyan (68%)

 Magenta (78%)

 Yellow (77%)

# Brightness & Saturation Gradients

These gradients show how the YUV color 63.8170, -2.3748, 15.0695 changes by changing the brightness by 10 percent. The first figure shows a shift by +10% for each color and the second figure -10%.

Similar to the brightness gradients but the following saturation gradients show a change of the YUV color 63.8170, -2.3748, 15.0695 by changing the saturation by 10% instead.



■ 63.8170, -2.3748,  
15.0695

■ 63.8170, -2.3748,  
15.0695

■ 255.0000, 0.0000,  
0.0000

■ 41.5180, -2.2274,  
14.4547

■ 111.7140, -2.8170,  
16.9138

■ 20.8060, -2.3694,  
13.3251

■ 137.0130, -2.9644,  
17.5286

■ 0.0000, 0.0000,  
0.0000

■ 163.3120, -3.1118,  
18.1434

■ 190.6110, -3.2592,  
18.7582

■ 218.9100, -3.4066,  
19.3729

■ 242.7240, -1.3429,

10.7661

■ 63.8170, -2.3748,  
15.0695

■ 63.8170, -2.3748,  
15.0695

■ 58.3230, -3.1172,  
19.8877

■ 69.3110, -1.6323,  
10.2513

■ 52.8290, -3.8597,  
24.7060

■ 74.8050, -0.8899,  
5.4330

■ 47.3350, -4.6022,  
29.5242

■ 80.2990, -0.1474,  
0.6148

■ 41.7270, -5.7814,  
34.4424

■ 85.9070, 1.0318,  
-4.3034

■ 35.6460, -6.2345,  
39.7755

■ 91.9880, 1.4849,  
-9.6365

■ 30.1520, -6.9769,  
44.5937

■ 97.4820, 2.2274,  
-14.4547

■ 25.3590, -7.5720,  
48.7972

■ 102.9760, 2.9698,  
-19.2730

■ 108.4700, 3.7123,  
-24.0912

■ 113.9640, 4.4547,  
-28.9094

# Harmonies

## Analogous

The Analogous color harmony consists of three colors that are next to each other on the color wheel.



64.2340, 1.8566, 11.1958



63.8170, -2.3748, 15.0695



63.1930, -6.0111, 14.7397

# Triad

The Triadic color harmony groups three colors that are evenly spaced from another and form a triangle on the color wheel.



63.8170, -2.3748, 15.0695



60.7730, -5.8041, -5.0629



60.7300, 9.5001, -13.7952

# Complementary

The Complementary color scheme is a pair of colors which are on the opposite of each other on the color wheel.



63.8170, -2.3748, 15.0695



73.1830, 2.3748, -15.0695

# Split Complementary

Split-complementary colors differ from the complementary color scheme. The scheme consists of three colors, the original color and two neighbors of the complement color.



58.8280, 7.4798, -19.1432



63.8170, -2.3748, 15.0695



59.2820, -1.1250, -12.5253

# Square

The Square scheme is like the rectangle color scheme, but the four colors are evenly spaced on the color wheel.



63.8170, -2.3748, 15.0695



61.5460, -8.1572, 3.0292



58.8020, 3.5486, -18.2434



62.5570, 8.5994, -4.8735



# Rectangle

The Rectangle color scheme consists of four colors that form a rectangle on the color wheel.



63.8170, -2.3748, 15.0695



62.7150, -7.7475, 11.6509



58.8020, 3.5486, -18.2434



59.8930, 8.9268, -16.5692

# Sweetspot

The Sweet Spot groups the original color and five complimentary colors.



63.8170, -2.3748, 15.0695



98.1040, -1.0373, 6.0478



65.4280, 7.6770, 11.0256



49.7940, -0.8844, 3.6887



181.0000, 0.0000, 0.0000



54.0000, 0.0000, 0.0000



# Same Dimension

The Same Dimension uses a secret algorithm to generate beautiful new colors.



63.8170, -2.3748, 15.0695



78.2310, -3.5649, 23.4764



68.7580, -6.2897, 10.7362



38.1960, -0.5896, 2.4591



32.8770, -9.7994, 63.2519



72.5600, -21.9681, 139.8289



# Inverse Universe

The Inverse Universe completely reimagines the original color for something new.



63.8170, -2.3748, 15.0695



78.2310, -3.5649, 23.4764



68.2420, 6.2897, -10.7362



38.1960, -0.5896, 2.4591



32.8770, -9.7994, 63.2519

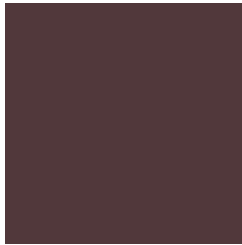


72.5600, -21.9681, 139.8289



# Previews

## White Background



This preview shows how the YUV color 63.8170, -2.3748, 15.0695 looks on a white background.

## Color Contrast Check

Large Text (above 18pt) WCAG AA ✓ Pass

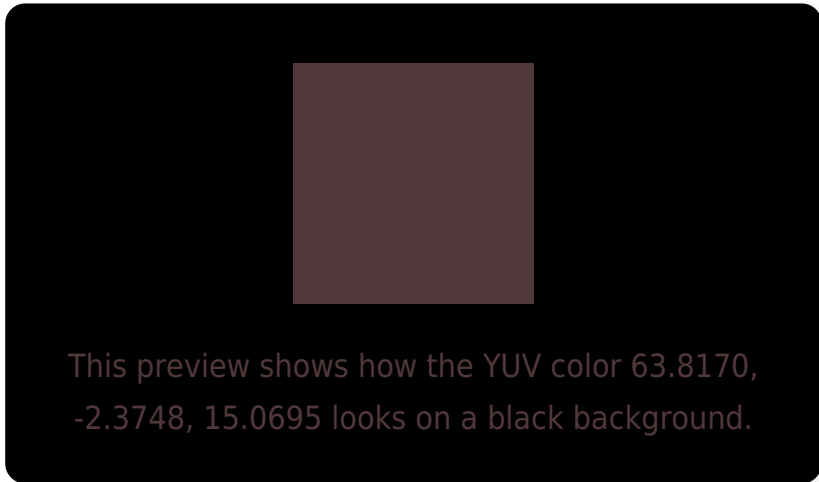
Any Text WCAG AA ✓ Pass

Large Text (above 18pt) WCAG AAA ✓ Pass

Any Text WCAG AAA ✓ Pass



# Black Background



## Color Contrast Check

Large Text (above 18pt) WCAG AA × Fail

Any Text WCAG AA × Fail

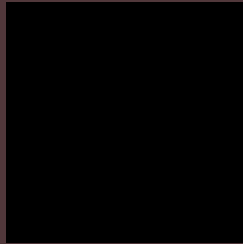
Large Text (above 18pt) WCAG AAA × Fail

Any Text WCAG AAA × Fail

If you want to check with other color combinations, try the [Color Contrast Checker](#).

**YUV 63.8170, -2.3748, 15.0695**

## **Background**



This preview shows how black text looks on a background with the YUV color 63.8170, -2.3748, 15.0695.



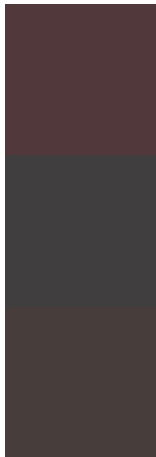
This preview shows how white text looks on a background with the YUV color 63.8170, -2.3748,



# Color Blindness Simulation

Color vision deficiency is a very complex topic, and I could not describe the different causes any better than Wikipedia does, so if you want to learn more, you should check out their [article about color blindness](#).

## Dichromacy



### Original Color

63.8170, -2.3748, 15.0695

### Protanopia

62.7120, 0.1420, 1.1296

### Deuteranopia

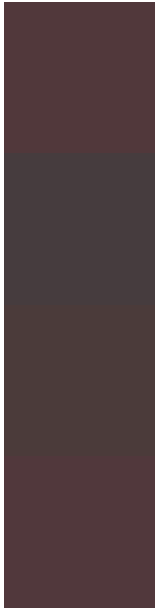
63.6480, -2.7845, 6.4477



## Tritanopia

63.9310, -1.9380, 14.9695

# Trichromacy



## Original Color

63.8170, -2.3748, 15.0695

## Protanomaly

63.2180, -0.6005, 5.9478

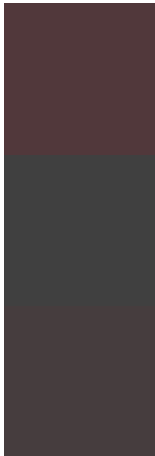
## Deuteranomaly

63.6700, -2.7953, 9.9364

## Tritanomaly

63.9310, -1.9380, 14.9695

# Monochromacy



## Original Color

63.8170, -2.3748, 15.0695

## Achromatopsia

64.0000, 0.0000, 0.0000

## Achromatomaly

63.8050, -0.8899, 5.4330

# CSS Examples

## Text

The CSS property to change the color of the text to YUV 63.8170, -2.3748, 15.0695 is called "color". The color property can be set on classes, ids or directly on the HTML element.

This example shows how text in the color `rgb(81, 56, 59)` looks like.

```
.text, #text, p{  
    color:rgb(81, 56, 59)  
}
```

If you want to add a text shadow in that color use the text-shadow property, you can generate a text shadow directly with our [CSS Text Shadow Generator](#).

Here you see how black text with a 4 pixel rgb(81, 56, 59) colored shadow looks like.

```
.shadow{ text-shadow: 4px 4px 2px rgb(81, 56, 59) }
```

## Border

The CSS property to change the border of an element to YUV 63.8170, -2.3748, 15.0695 is called "border". The border property can be set on classes, ids or directly on the HTML element.

This example shows the color as border, it can be applied via the CSS property "border" or "border-color".

```
.border, #border, table{ border:4px solid rgb(81, 56, 59) }
```



If only the border color should be changed use the property border-color.

```
.border{ border-color:rgb(81, 56, 59) }
```

If you want to add a box shadow in that color use:

Here you see how a box with a 4 pixel rgb(81, 56, 59) colored shadow looks like.

```
.boxshadow{ -moz-box-shadow:4px 4px 4px  
4px rgb(81, 56, 59); -webkit-box-  
shadow:4px 4px 4px 4px rgb(81, 56, 59);  
box-shadow:4px 4px 4px 4px rgb(81, 56, 59)  
}
```

# Background

The CSS property to change the background color of an element to YUV 63.8170, -2.3748, 15.0695 is called "background". The background property can be set on classes, ids or directly on the HTML element.

```
.background, #background, body{  
background: rgb(81, 56, 59) }
```

If only the background color should be changed can be used:

```
.background{ background-color: rgb(81, 56,  
59) }
```

This example shows the color as background, it is applied via the CSS property "background".

To optimize and compress your CSS code, you can use our [online CSS compressor and optimizer](#) based on csstidy. If you want to create a linear or radial gradient as background or border, check our [CSS Gradient Generator](#).

Hey! You found this booklet interesting? Support Converting Colors with the new Membership Option!

The pro membership hides all ads, plus gives you double the colors in the color bucket, and more awesome pro features!

**[Learn more, Memberships starting at \\$2.50/m!](#)**

**Follow me  
on Twitter!**

@ConvertingColor