

Converting Colors

YUV(64.2480, -6.0383, 23.4615)

Have a look what the booklet for
YUV(64.2480, -6.0383, 23.4615)
contains.

YUV(64.2480, -6.0383, 23.4615)	3
<i>Conversions</i>	4
<i>Details</i>	6
<i>Harmonies</i>	12
<i>Previews</i>	24
<i>Color Blindness Simulation</i>	28
<i>CSS Examples</i>	31

Color

**YUV(64.2480, -6.0383,
23.4615)**

Conversions

Conversions Part 1

Format	Color
Hex	5B3534
RGB	91, 53, 52
RGB Percent	36%, 21%, 20%
CMY	0.6431, 0.7922, 0.7961
CMYK	0.00, 0.42, 0.43, 0.64
HSL	2°, 27%, 28%
HSV	2°, 43%, 36%
XYZ	6.2073, 5.0183, 3.8903
YIQ	64.2480, 22.9690, 7.7450

Conversions

Conversions Part 2

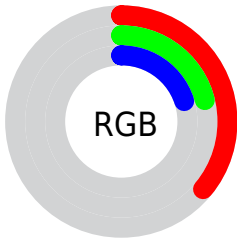
Format	Color
RYB	91, 53, 52
Decimal	5977396
CIELab	26.79, 16.93, 7.90
CIELCh	27, 18.679, 25.013
Yxy	5.0183, 0.4106, 0.3320
Android (android.graphics.Color)	4284167476 (0xFF5B3534)
YUV	64.2480, -6.0383, 23.4615
Hunter-Lab	22.4015, 10.2585, 5.3847

Details

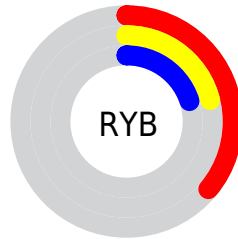
The YUV color **64.2480, -6.0383, 23.4615** is a dark color, and the websafe version is hex **663333**. A complement of this color would be **78.7520, 6.0383, -23.4615**, and the grayscale version is **64.0000, 0.0000, 0.0000**.

A 20% lighter version of the original color is **112.6290, -7.2121, 26.6354**, and **19.7100, -6.7590, 21.3023** is the 20% darker color. If you saturate the color by 10%, you get **57.9390, -7.3649, 28.9945**, and if you desaturate by 10%, it is **70.5570, -4.7116, 17.9285**.

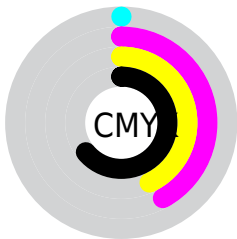
Distribution



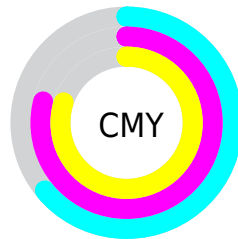
- Red (36%)
- Green (21%)
- Blue (20%)



- Red (36%)
- Yellow (21%)
- Blue (20%)



- Cyan (0%)
- Magenta (42%)
- Yellow (43%)
- Black (64%)



- Cyan (64%)
- Magenta (79%)
- Yellow (80%)

Brightness & Saturation Gradients

These gradients show how the YUV color 64.2480, -6.0383, 23.4615 changes by changing the brightness by 10 percent. The first figure shows a shift by +10% for each color and the second figure -10%.

Similar to the brightness gradients but the following saturation gradients show a change of the YUV color 64.2480, -6.0383, 23.4615 by changing the saturation by 10% instead.

■ 64.2480, -6.0383,
23.4615

■ 64.2480, -6.0383,
23.4615

255.0000, 0.0000,
0.0000

■ 41.4650, -5.1592,
21.5172

■ 112.6290, -7.2121,
26.6354

■ 19.7100, -6.7590,
21.3023

■ 138.2270, -7.5069,
27.8649

■ 2.3920, -1.1793,
4.9182

■ 164.5260, -7.6543,
28.4797

■ 0.0000, 0.0000,
0.0000

■ 192.1240, -7.9491,
29.7093

■ 220.3090, -8.5333,
30.4240

■ 239.9370, -4.4059,

13.2103

■ 64.2480, -6.0383,
23.4615

■ 64.2480, -6.0383,
23.4615

■ 57.9390, -7.3649,
28.9945

■ 70.5570, -4.7116,
17.9285

■ 51.6300, -8.6916,
34.5275

■ 76.8660, -3.3849,
12.3955

■ 45.3210, -10.0183,
40.0605

■ 83.1750, -2.0583,
6.8625

■ 39.5990, -11.6343,
45.0787

■ 88.8970, -0.4422,
1.8443

■ 33.1760, -13.3978,
50.7116

■ 95.3200, 1.3212,
-3.7886

■ 28.3830, -13.9928,
54.9151

■ 101.6290, 2.6479,
-9.3216

■ 107.9380, 3.9746,
-14.8546

■ 114.2470, 5.3012,
-20.3876

■ 120.5560, 6.6279,
-25.9206

Harmonies

Analogous

The Analogous color harmony consists of three colors that are next to each other on the color wheel.



64.6590, 0.6611, 21.3471



64.2480, -6.0383, 23.4615



63.7330, -11.7004, 19.5282

Triad

The Triadic color harmony groups three colors that are evenly spaced from another and form a triangle on the color wheel.



64.2480, -6.0383, 23.4615



59.0170, -5.9244, -13.1699



60.1900, 15.1893, -18.5836

Complementary

The Complementary color scheme is a pair of colors which are on the opposite of each other on the color wheel.



64.2480, -6.0383, 23.4615



78.7520, 6.0383, -23.4615

Split Complementary

Split-complementary colors differ from the complementary color scheme. The scheme consists of three colors, the original color and two neighbors of the complement color.



54.1940, 15.6804, -36.1271



64.2480, -6.0383, 23.4615



55.9920, 1.9759, -27.1800

Square

The Square scheme is like the rectangle color scheme, but the four colors are evenly spaced on the color wheel.



64.2480, -6.0383, 23.4615



61.1990, -11.9301, -0.1745



52.0210, 11.3286, -40.3604



64.4910, 12.0829, -2.1846

Rectangle

The Rectangle color scheme consists of four colors that form a rectangle on the color wheel.



64.2480, -6.0383, 23.4615



62.9450, -13.2839, 14.0802



52.0210, 11.3286, -40.3604



58.6730, 15.9372, -25.1462

Sweetspot

The Sweet Spot groups the original color and five complimentary colors.



64.2480, -6.0383, 23.4615



106.4850, -2.2111, 9.2217



67.9930, 10.8495, 20.1771



52.5770, -1.7635, 5.6330



186.0000, 0.0000, 0.0000



59.0000, 0.0000, 0.0000

Same Dimension

The Same Dimension uses a secret algorithm to generate beautiful new colors.



64.2480, -6.0383, 23.4615



76.1140, -9.4232, 35.8570



75.4010, -11.5367, 13.6803



42.4950, -0.7370, 3.0739



34.6510, -17.0829, 66.0811



74.3850, -36.6718, 142.6134

Inverse Universe

The Inverse Universe completely reimagines the original color for something new.



78.7520, 6.0383, -23.4615



98.4730, 9.1338, -36.3718



67.5990, 11.5367, -13.6803



44.5050, 0.7370, -3.0739



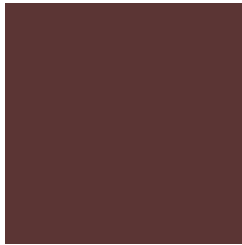
75.3490, 17.0829, -66.0811



162.6150, 36.6718, -142.6134

Previews

White Background



This preview shows how the YUV color 64.2480, -6.0383, 23.4615 looks on a white background.

Color Contrast Check

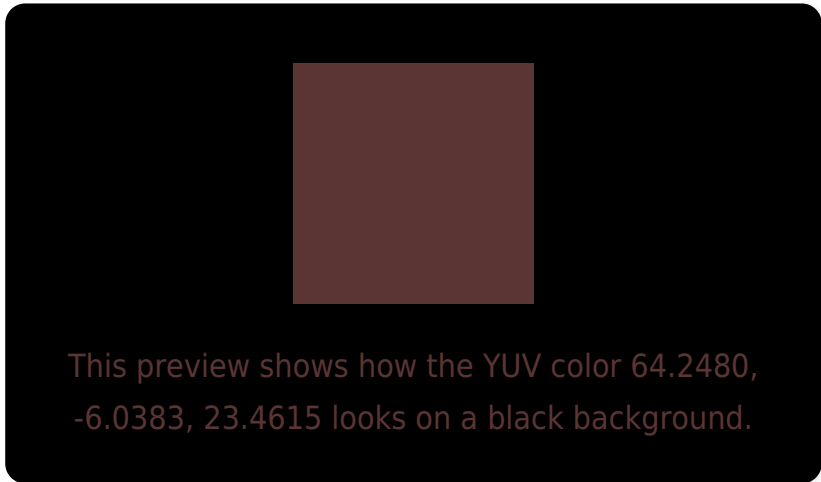
Large Text (above 18pt) WCAG AA ✓ Pass

Any Text WCAG AA ✓ Pass

Large Text (above 18pt) WCAG AAA ✓ Pass

Any Text WCAG AAA ✓ Pass

Black Background



Color Contrast Check

Large Text (above 18pt) WCAG AA × Fail

Any Text WCAG AA × Fail

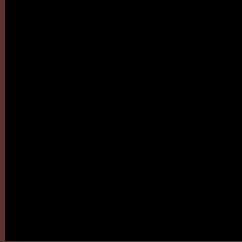
Large Text (above 18pt) WCAG AAA × Fail

Any Text WCAG AAA × Fail

If you want to check with other color combinations, try the [Color Contrast Checker](#).

YUV 64.2480, -6.0383, 23.4615

Background



This preview shows how black text looks on a background with the YUV color 64.2480, -6.0383, 23.4615.

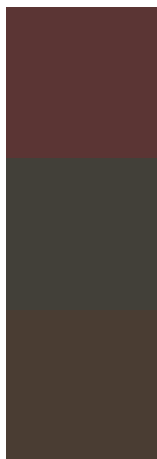


This preview shows how white text looks on a background with the YUV color 64.2480, -6.0383,

Color Blindness Simulation

Color vision deficiency is a very complex topic, and I could not describe the different causes any better than Wikipedia does, so if you want to learn more, you should check out their [article about color blindness](#).

Dichromacy



Original Color

64.2480, -6.0383, 23.4615

Protanopia

63.8000, -3.3524, 1.9294

Deuteranopia

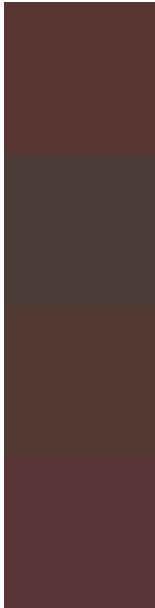
63.7470, -6.2843, 8.9919



Tritanopia

64.1170, -4.0017, 23.5764

Trichromacy



Original Color

64.2480, -6.0383, 23.4615

Protanomaly

63.9150, -4.3951, 9.7215

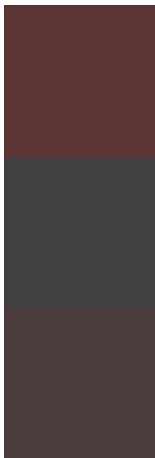
Deuteranomaly

63.7800, -6.3005, 14.2249

Tritanomaly

64.0030, -4.4385, 23.6764

Monochromacy



Original Color

64.2480, -6.0383, 23.4615

Achromatopsia

64.0000, 0.0000, 0.0000

Achromatomaly

64.1860, -2.0637, 8.6069

CSS Examples

Text

The CSS property to change the color of the text to YUV 64.2480, -6.0383, 23.4615 is called "color". The color property can be set on classes, ids or directly on the HTML element.

This example shows how text in the color `rgb(91, 53, 52)` looks like.

```
.text, #text, p{  
    color:rgb(91, 53, 52)  
}
```

If you want to add a text shadow in that color use the text-shadow property, you can generate a text shadow directly with our [CSS Text Shadow Generator](#).

Here you see how black text with a 4 pixel rgb(91, 53, 52) colored shadow looks like.

```
.shadow{ text-shadow: 4px 4px 2px rgb(91, 53, 52) }
```

Border

The CSS property to change the border of an element to YUV 64.2480, -6.0383, 23.4615 is called "border". The border property can be set on classes, ids or directly on the HTML element.

This example shows the color as border, it can be applied via the CSS property "border" or "border-color".

```
.border, #border, table{ border:4px solid rgb(91, 53, 52) }
```


If only the border color should be changed use the property border-color.

```
.border{ border-color:rgb(91, 53, 52) }
```

If you want to add a box shadow in that color use:

Here you see how a box with a 4 pixel rgb(91, 53, 52) colored shadow looks like.

```
.boxshadow{ -moz-box-shadow:4px 4px 4px  
4px rgb(91, 53, 52); -webkit-box-  
shadow:4px 4px 4px 4px rgb(91, 53, 52);  
box-shadow:4px 4px 4px 4px rgb(91, 53, 52)  
}
```

Background

The CSS property to change the background color of an element to YUV 64.2480, -6.0383, 23.4615 is called "background". The background property can be set on classes, ids or directly on the HTML element.

```
.background, #background, body{  
background: rgb(91, 53, 52) }
```

If only the background color should be changed can be used:

```
.background{ background-color: rgb(91, 53,  
52) }
```

This example shows the color as background, it is applied via the CSS property "background".

To optimize and compress your CSS code, you can use our [online CSS compressor and optimizer](#) based on csstidy. If you want to create a linear or radial gradient as background or border, check our [CSS Gradient Generator](#).

Hey! You found this booklet interesting? Support Converting Colors with the new Membership Option!

The pro membership hides all ads, plus gives you double the colors in the color bucket, and more awesome pro features!

[Learn more, Memberships starting at \\$2.50/m!](#)

**Follow me
on Twitter!**

@ConvertingColor