

Converting Colors

YUV(66.4160, -7.6001, 11.0362)

Have a look what the booklet for
YUV(66.4160, -7.6001, 11.0362)
contains.

YUV(66.4160, -7.6001, 11.0362)	3
<i>Conversions</i>	4
<i>Details</i>	6
<i>Harmonies</i>	12
<i>Previews</i>	24
<i>Color Blindness Simulation</i>	28
<i>CSS Examples</i>	31

Color

**YUV(66.4160, -7.6001,
11.0362)**

Conversions

Conversions Part 1

Format	Color
Hex	4F3F33
RGB	79, 63, 51
RGB Percent	31%, 25%, 20%
CMY	0.6902, 0.7529, 0.8000
CMYK	0.00, 0.20, 0.35, 0.69
HSL	26°, 22%, 25%
HSV	26°, 35%, 31%
XYZ	5.5995, 5.4563, 3.8900
YIQ	66.4160, 13.3880, -0.3400

Conversions

Conversions Part 2

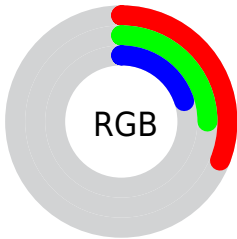
Format	Color
R_{YB}	79, 72, 51
Decimal	5193523
CIE _{Lab}	28.00, 4.91, 9.99
CIE _{LCh}	28, 11.129, 63.811
Yxy	5.4563, 0.3747, 0.3651
Android (android.graphics.Color)	4283383603 (0xFF4F3F33)
YUV	66.4160, -7.6001, 11.0362
Hunter-Lab	23.3587, 1.9119, 6.4773

Details

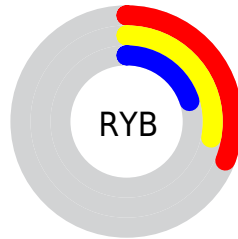
The YUV color **66.4160, -7.6001, 11.0362** is a dark color, and the websafe version is hex **333333**. A complement of this color would be **63.5840, 7.6001, -11.0362**, and the grayscale version is **66.0000, 0.0000, 0.0000**.

A 20% lighter version of the original color is **114.7860, -8.7685, 12.4657**, and **23.3620, -9.0525, 10.2065** is the 20% darker color. If you saturate the color by 10%, you get **62.5690, -9.6475, 14.4100**, and if you desaturate by 10%, it is **70.2630, -5.5527, 7.6623**.

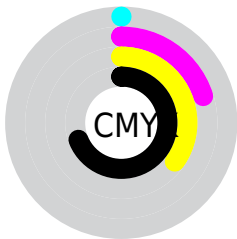
Distribution



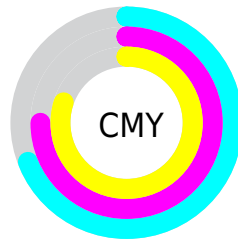
- Red (31%)
- Green (25%)
- Blue (20%)



- Red (31%)
- Yellow (28%)
- Blue (20%)



- Cyan (0%)
- Magenta (20%)
- Yellow (35%)
- Black (69%)



- Cyan (69%)
- Magenta (75%)
- Yellow (80%)

Brightness & Saturation Gradients

These gradients show how the YUV color 66.4160, -7.6001, 11.0362 changes by changing the brightness by 10 percent. The first figure shows a shift by +10% for each color and the second figure -10%.

Similar to the brightness gradients but the following saturation gradients show a change of the YUV color 66.4160, -7.6001, 11.0362 by changing the saturation by 10% instead.

■ 66.4160, -7.6001,
11.0362

■ 66.4160, -7.6001,
11.0362

■ 255.0000, 0.0000,
0.0000

■ 44.2310, -7.0159,
10.3214

■ 114.7860, -8.7685,
12.4657

■ 23.3620, -9.0525,
10.2065

■ 140.0850, -8.9159,
13.0805

■ 0.0000, 0.0000,
0.0000

■ 166.3840, -9.0633,
13.6952

■ 193.6830, -9.2107,
14.3100

■ 221.5690, -9.6475,
14.4100

■ 246.2800, -8.0260,

7.6474

■ 66.4160, -7.6001,
11.0362

■ 66.4160, -7.6001,
11.0362

■ 62.5690, -9.6475,
14.4100

■ 70.2630, -5.5527,
7.6623

■ 59.3090, -11.9843,
17.2690

■ 73.5230, -3.2158,
4.8033

■ 55.4620, -14.0318,
20.6428

■ 77.3700, -1.1684,
1.4295

■ 52.2020, -16.3686,
23.5018

■ 80.6300, 1.1684,
-1.4295

■ 48.4690, -17.9792,
26.7757

■ 84.4770, 3.2158,
-4.8033

■ 45.2090, -20.3160,
29.6347

■ 87.6230, 5.1159,
-7.5624

■ 43.5790, -21.4844,
31.0642

■ 91.4700, 7.1633,
-10.9362

■ 94.7300, 9.5001,
-13.7952

■ 98.5770, 11.5475,
-17.1690

Harmonies

Analogous

The Analogous color harmony consists of three colors that are next to each other on the color wheel.



67.1220, -4.9901, 13.9250



66.4160, -7.6001, 11.0362



65.5570, -8.1626, 4.7735

Triad

The Triadic color harmony groups three colors that are evenly spaced from another and form a triangle on the color wheel.



66.4160, -7.6001, 11.0362



62.7700, 2.0854, -15.5843



67.3190, 6.2517, 1.4742

Complementary

The Complementary color scheme is a pair of colors which are on the opposite of each other on the color wheel.



66.4160, -7.6001, 11.0362



63.5840, 7.6001, -11.0362

Split Complementary

Split-complementary colors differ from the complementary color scheme. The scheme consists of three colors, the original color and two neighbors of the complement color.



65.2470, 8.7522, -7.2326



66.4160, -7.6001, 11.0362



62.7850, 6.0220, -18.2284

Square

The Square scheme is like the rectangle color scheme, but the four colors are evenly spaced on the color wheel.



66.4160, -7.6001, 11.0362



63.2500, -2.5882, -9.8663



63.7900, 8.4845, -14.7248



67.5650, 3.1725, 9.1515

Rectangle

The Rectangle color scheme consists of four colors that form a rectangle on the color wheel.



66.4160, -7.6001, 11.0362



65.0510, -7.4201, -0.0447



63.7900, 8.4845, -14.7248



66.3510, 7.7150, -1.1848

Sweetspot

The Sweet Spot groups the original color and five complimentary colors.



66.4160, -7.6001, 11.0362



97.2240, -3.0684, 4.1886



61.1960, 2.8614, 15.6141



47.8540, -1.9000, 2.7590



179.0000, 0.0000, 0.0000



51.0000, 0.0000, 0.0000

Same Dimension

The Same Dimension uses a secret algorithm to generate beautiful new colors.



66.4160, -7.6001, 11.0362



82.3090, -11.9843, 17.2690



74.6340, -11.6516, 3.8290



36.3700, -1.1684, 1.4295



56.3260, -27.7687, 40.0561



126.2960, -62.2639, 90.9484

Inverse Universe

The Inverse Universe completely reimagines the original color for something new.



63.5840, 7.6001, -11.0362



77.6910, 11.9843, -17.2690



55.3660, 11.6516, -3.8290



36.2170, 0.8790, -1.9443



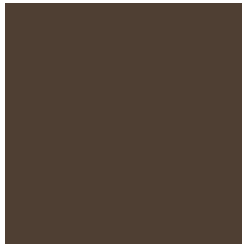
45.6740, 27.7687, -40.0561



103.1170, 62.5533, -90.4336

Previews

White Background



This preview shows how the YUV color 66.4160, -7.6001, 11.0362 looks on a white background.

Color Contrast Check

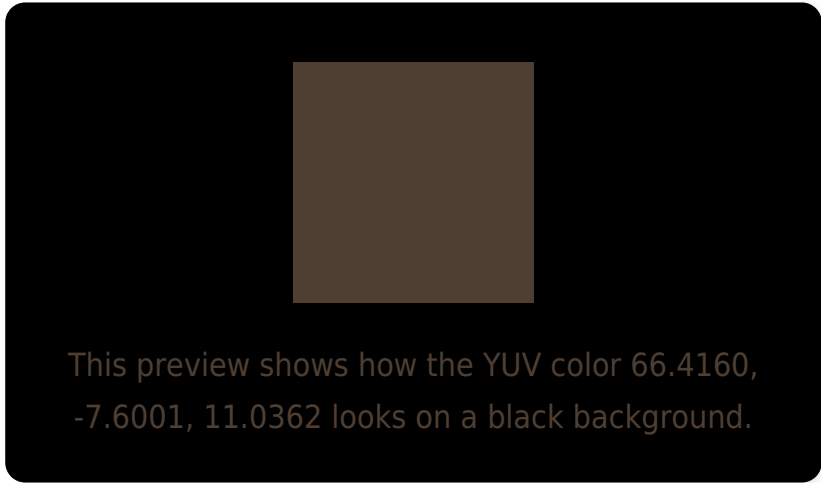
Large Text (above 18pt) WCAG AA ✓ Pass

Any Text WCAG AA ✓ Pass

Large Text (above 18pt) WCAG AAA ✓ Pass

Any Text WCAG AAA ✓ Pass

Black Background



Color Contrast Check

Large Text (above 18pt) WCAG AA × Fail

Any Text WCAG AA × Fail

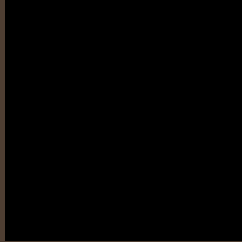
Large Text (above 18pt) WCAG AAA × Fail

Any Text WCAG AAA × Fail

If you want to check with other color combinations, try the [Color Contrast Checker](#).

YUV 66.4160, -7.6001, 11.0362

Background



This preview shows how black text looks on a background with the YUV color 66.4160, -7.6001, 11.0362.

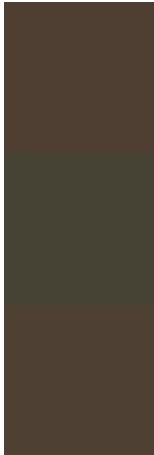


This preview shows how white text looks on a background with the YUV color 66.4160, -7.6001,

Color Blindness Simulation

Color vision deficiency is a very complex topic, and I could not describe the different causes any better than Wikipedia does, so if you want to learn more, you should check out their [article about color blindness](#).

Dichromacy



Original Color

66.4160, -7.6001, 11.0362

Protanopia

65.6000, -6.7048, 3.8588

Deuteranopia

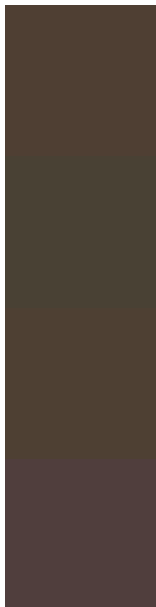
66.7040, -7.7421, 9.9066



Tritanopia

67.5500, -0.7641, 11.7957

Trichromacy



Original Color

66.4160, -7.6001, 11.0362

Protanomaly

65.9100, -6.8576, 6.2179

Deuteranomaly

66.7040, -7.7421, 9.9066

Tritanomaly

67.2680, -3.0901, 11.1660

Monochromacy



Original Color

66.4160, -7.6001, 11.0362

Achromatopsia

66.0000, 0.0000, 0.0000

Achromatomaly

66.3380, -2.6316, 4.0886

CSS Examples

Text

The CSS property to change the color of the text to YUV 66.4160, -7.6001, 11.0362 is called "color". The color property can be set on classes, ids or directly on the HTML element.

This example shows how text in the color `rgb(79, 63, 51)` looks like.

```
.text, #text, p{  
    color:rgb(79, 63, 51)  
}
```

If you want to add a text shadow in that color use the text-shadow property, you can generate a text shadow directly with our [CSS Text Shadow Generator](#).

Here you see how black text with a 4 pixel rgb(79, 63, 51) colored shadow looks like.

```
.shadow{ text-shadow: 4px 4px 2px rgb(79, 63, 51) }
```

Border

The CSS property to change the border of an element to YUV 66.4160, -7.6001, 11.0362 is called "border". The border property can be set on classes, ids or directly on the HTML element.

This example shows the color as border, it can be applied via the CSS property "border" or "border-color".

```
.border, #border, table{ border:4px solid rgb(79, 63, 51) }
```


If only the border color should be changed use the property `border-color`.

```
.border{ border-color:rgb(79, 63, 51) }
```

If you want to add a box shadow in that color use:

Here you see how a box with a 4 pixel `rgb(79, 63, 51)` colored shadow looks like.

```
.boxshadow{ -moz-box-shadow:4px 4px 4px  
4px rgb(79, 63, 51); -webkit-box-  
shadow:4px 4px 4px 4px rgb(79, 63, 51);  
box-shadow:4px 4px 4px 4px rgb(79, 63, 51)  
}
```

Background

The CSS property to change the background color of an element to YUV 66.4160, -7.6001, 11.0362 is called "background". The background property can be set on classes, ids or directly on the HTML element.

```
.background, #background, body{  
background: rgb(79, 63, 51) }
```

If only the background color should be changed can be used:

```
.background{ background-color: rgb(79, 63,  
51) }
```

This example shows the color as background, it is applied via the CSS property "background".

To optimize and compress your CSS code, you can use our [online CSS compressor and optimizer](#) based on csstidy. If you want to create a linear or radial gradient as background or border, check our [CSS Gradient Generator](#).

Hey! You found this booklet interesting? Support Converting Colors with the new Membership Option!

The pro membership hides all ads, plus gives you double the colors in the color bucket, and more awesome pro features!

[Learn more, Memberships starting at \\$2.50/m!](#)

**Follow me
on Twitter!**

@ConvertingColor