

Converting Colors

YUV(67.8780, -4.8699, 22.0320)

Have a look what the booklet for
YUV(67.8780, -4.8699, 22.0320)
contains.

YUV(67.8780, -4.8699, 22.0320)	3
<i>Conversions</i>	4
<i>Details</i>	6
<i>Harmonies</i>	12
<i>Previews</i>	24
<i>Color Blindness Simulation</i>	28
<i>CSS Examples</i>	31

Color

**YUV(67.8780, -4.8699,
22.0320)**

Conversions

Conversions Part 1

Format	Color
Hex	5D393A
RGB	93, 57, 58
RGB Percent	36%, 22%, 23%
CMY	0.6353, 0.7765, 0.7725
CMYK	0.00, 0.39, 0.38, 0.64
HSL	358°, 24%, 29%
HSV	358°, 39%, 36%
XYZ	6.7410, 5.5589, 4.7207
YIQ	67.8780, 21.1350, 7.9430

Conversions

Conversions Part 2

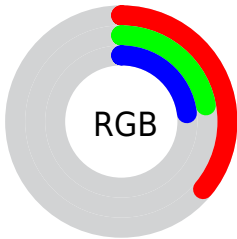
Format	Color
RYB	93, 57, 58
Decimal	6109498
CIELab	28.27, 16.14, 6.07
CIELCh	28, 17.246, 20.605
Yxy	5.5589, 0.3961, 0.3266
Android (android.graphics.Color)	4284299578 (0xFF5D393A)
YUV	67.8780, -4.8699, 22.0320
Hunter-Lab	23.5773, 9.7751, 4.6330

Details

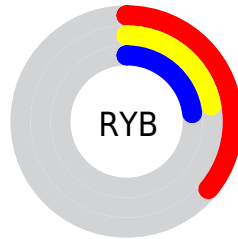
The YUV color **67.8780, -4.8699, 22.0320** is a dark color, and the websafe version is hex **663333**. A complement of this color would be **82.1220, 4.8699, -22.0320**, and the grayscale version is **68.0000, 0.0000, 0.0000**.

A 20% lighter version of the original color is **116.9600, -5.8963, 24.5911**, and **23.3830, -4.1328, 18.9581** is the 20% darker color. If you saturate the color by 10%, you get **61.5690, -6.1965, 27.5650**, and if you desaturate by 10%, it is **74.1870, -3.5432, 16.4990**.

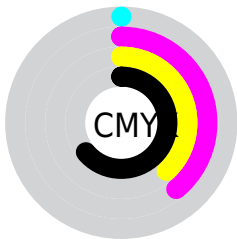
Distribution



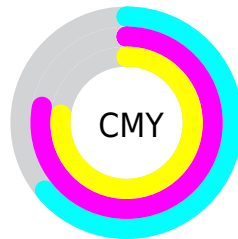
- Red (36%)
- Green (22%)
- Blue (23%)



- Red (36%)
- Yellow (22%)
- Blue (23%)



- Cyan (0%)
- Magenta (39%)
- Yellow (38%)
- Black (64%)



- Cyan (64%)
- Magenta (78%)
- Yellow (77%)

Brightness & Saturation Gradients

These gradients show how the YUV color 67.8780, -4.8699, 22.0320 changes by changing the brightness by 10 percent. The first figure shows a shift by +10% for each color and the second figure -10%.

Similar to the brightness gradients but the following saturation gradients show a change of the YUV color 67.8780, -4.8699, 22.0320 by changing the saturation by 10% instead.

■ 67.8780, -4.8699,
22.0320

■ 67.8780, -4.8699,
22.0320

■ 255.0000, 0.0000,
0.0000

■ 45.2800, -4.5750,
20.8024

■ 116.9600, -5.8963,
24.5911

■ 23.3830, -4.1328,
18.9581

■ 142.5580, -6.1911,
25.8206

■ 5.9800, -2.9481,
12.2955

■ 168.8570, -6.3385,
26.4354

■ 0.0000, 0.0000,
0.0000

■ 196.4550, -6.6333,
27.6650

■ 224.1560, -6.4859,
27.0502

■ 243.7840, -2.3585,

■ 67.8780, -4.8699,
22.0320

■ 67.8780, -4.8699,
22.0320

■ 61.5690, -6.1965,
27.5650

■ 74.1870, -3.5432,
16.4990

■ 54.6730, -7.2338,
33.6128

■ 81.0830, -2.5059,
10.4512

■ 48.3640, -8.5605,
39.1458

■ 87.3920, -1.1793,
4.9182

■ 42.0550, -9.8871,
44.6788

■ 93.7010, 0.1474,
-0.6148

■ 35.7460, -11.2138,
50.2118

■ 100.5970, 1.1847,
-6.6626

■ 28.8500, -12.2510,
56.2596

■ 106.9060, 2.5113,
-12.1956

■ 28.1490, -12.3985,
56.8743

■ 113.2150, 3.8380,
-17.7286

■ 119.5240, 5.1647,
-23.2615

■ 126.4200, 6.2019,
-29.3093

Harmonies

Analogous

The Analogous color harmony consists of three colors that are next to each other on the color wheel.



68.4630, 1.2507, 18.8879



67.8780, -4.8699, 22.0320



67.1890, -9.9532, 19.1282

Triad

The Triadic color harmony groups three colors that are evenly spaced from another and form a triangle on the color wheel.



67.8780, -4.8699, 22.0320



63.0990, -6.9508, -10.6108



63.6630, 14.4631, -18.9985

Complementary

The Complementary color scheme is a pair of colors which are on the opposite of each other on the color wheel.



67.8780, -4.8699, 22.0320



82.1220, 4.8699, -22.0320

Split Complementary

Split-complementary colors differ from the complementary color scheme. The scheme consists of three colors, the original color and two neighbors of the complement color.



59.3580, 13.6275, -31.0090



67.8780, -4.8699, 22.0320



60.9710, 0.5073, -22.7766

Square

The Square scheme is like the rectangle color scheme, but the four colors are evenly spaced on the color wheel.



67.8780, -4.8699, 22.0320



65.0250, -11.3513, 0.8551



58.6800, 8.5388, -32.1684



67.3660, 11.6516, -3.8290

Rectangle

The Rectangle color scheme consists of four colors that form a rectangle on the color wheel.



67.8780, -4.8699, 22.0320



66.5860, -12.1209, 14.3951



58.6800, 8.5388, -32.1684



61.9290, 14.3320, -23.6167

Sweetspot

The Sweet Spot groups the original color and five complimentary colors.



67.8780, -4.8699, 22.0320



109.5990, -1.7743, 9.1217



71.5690, 10.5655, 17.9180



55.3920, -1.1793, 4.9182



189.0000, 0.0000, 0.0000



61.0000, 0.0000, 0.0000

Same Dimension

The Same Dimension uses a secret algorithm to generate beautiful new colors.



67.8780, -4.8699, 22.0320



81.5590, -7.6706, 33.7128



77.7430, -10.2263, 13.3804



42.4950, -0.7370, 3.0739



33.2320, -14.9044, 67.3255



71.6610, -31.8779, 145.0023

Inverse Universe

The Inverse Universe completely reimagines the original color for something new.



67.8780, -4.8699, 22.0320



81.5590, -7.6706, 33.7128



72.2570, 10.2263, -13.3804



42.4950, -0.7370, 3.0739



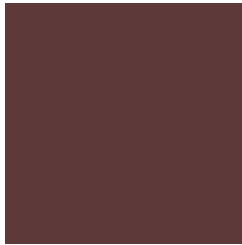
33.2320, -14.9044, 67.3255



71.6610, -31.8779, 145.0023

Previews

White Background



This preview shows how the YUV color 67.8780, -4.8699, 22.0320 looks on a white background.

Color Contrast Check

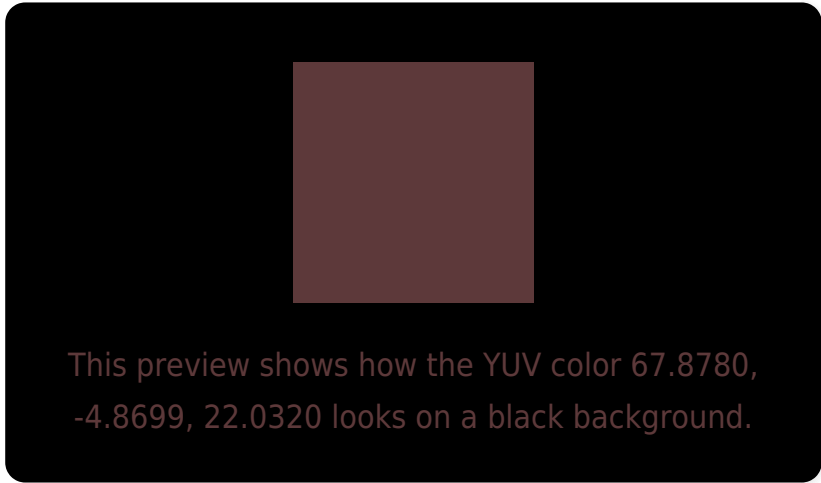
Large Text (above 18pt) WCAG AA ✓ Pass

Any Text WCAG AA ✓ Pass

Large Text (above 18pt) WCAG AAA ✓ Pass

Any Text WCAG AAA ✓ Pass

Black Background



Color Contrast Check

Large Text (above 18pt) WCAG AA × Fail

Any Text WCAG AA × Fail

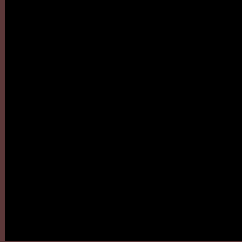
Large Text (above 18pt) WCAG AAA × Fail

Any Text WCAG AAA × Fail

If you want to check with other color combinations, try the [Color Contrast Checker](#).

YUV 67.8780, -4.8699, 22.0320

Background



This preview shows how black text looks on a background with the YUV color 67.8780, -4.8699, 22.0320.

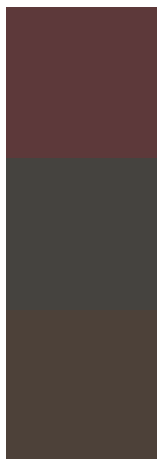


This preview shows how white text looks on a background with the YUV color 67.8780, -4.8699,

Color Blindness Simulation

Color vision deficiency is a very complex topic, and I could not describe the different causes any better than Wikipedia does, so if you want to learn more, you should check out their [article about color blindness](#).

Dichromacy



Original Color

67.8780, -4.8699, 22.0320

Protanopia

67.1420, -2.0420, 1.6295

Deuteranopia

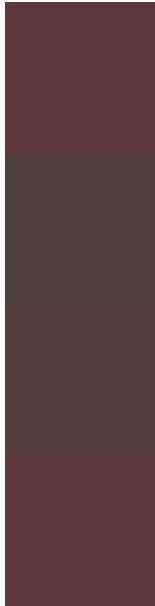
67.6760, -5.2633, 8.1771



Tritanopia

68.2200, -3.5595, 21.7321

Trichromacy



Original Color

67.8780, -4.8699, 22.0320

Protanomaly

67.2570, -3.0847, 9.4216

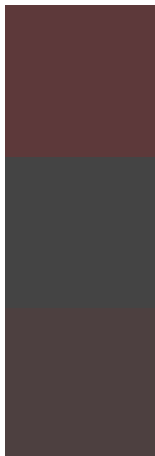
Deuteranomaly

67.7090, -5.2795, 13.4102

Tritanomaly

68.1060, -3.9963, 21.8320

Monochromacy



Original Color

67.8780, -4.8699, 22.0320

Achromatopsia

68.0000, 0.0000, 0.0000

Achromatomaly

67.8870, -1.9163, 7.9921

CSS Examples

Text

The CSS property to change the color of the text to YUV 67.8780, -4.8699, 22.0320 is called "color". The color property can be set on classes, ids or directly on the HTML element.

This example shows how text in the color `rgb(93, 57, 58)` looks like.

```
.text, #text, p{  
    color:rgb(93, 57, 58)  
}
```

If you want to add a text shadow in that color use the text-shadow property, you can generate a text shadow directly with our [CSS Text Shadow Generator](#).

Here you see how black text with a 4 pixel rgb(93, 57, 58) colored shadow looks like.

```
.shadow{ text-shadow: 4px 4px 2px rgb(93, 57, 58) }
```

Border

The CSS property to change the border of an element to YUV 67.8780, -4.8699, 22.0320 is called "border". The border property can be set on classes, ids or directly on the HTML element.

This example shows the color as border, it can be applied via the CSS property "border" or "border-color".

```
.border, #border, table{ border:4px solid rgb(93, 57, 58) }
```


If only the border color should be changed use the property `border-color`.

```
.border{ border-color:rgb(93, 57, 58) }
```

If you want to add a box shadow in that color use:

Here you see how a box with a 4 pixel `rgb(93, 57, 58)` colored shadow looks like.

```
.boxshadow{ -moz-box-shadow:4px 4px 4px  
4px rgb(93, 57, 58); -webkit-box-  
shadow:4px 4px 4px 4px rgb(93, 57, 58);  
box-shadow:4px 4px 4px 4px rgb(93, 57, 58)  
}
```

Background

The CSS property to change the background color of an element to YUV 67.8780, -4.8699, 22.0320 is called "background". The background property can be set on classes, ids or directly on the HTML element.

```
.background, #background, body{  
background: rgb(93, 57, 58) }
```

If only the background color should be changed can be used:

```
.background{ background-color: rgb(93, 57,  
58) }
```

This example shows the color as background, it is applied via the CSS property "background".

To optimize and compress your CSS code, you can use our [online CSS compressor and optimizer](#) based on csstidy. If you want to create a linear or radial gradient as background or border, check our [CSS Gradient Generator](#).

Hey! You found this booklet interesting? Support Converting Colors with the new Membership Option!

The pro membership hides all ads, plus gives you double the colors in the color bucket, and more awesome pro features!

[Learn more, Memberships starting at \\$2.50/m!](#)

**Follow me
on Twitter!**

@ConvertingColor