

Converting Colors

YUV(70.3010, -3.1064, 16.3990)

Have a look what the booklet for
YUV(70.3010, -3.1064, 16.3990)
contains.

YUV(70.3010, -3.1064, 16.3990)	3
<i>Conversions</i>	4
<i>Details</i>	6
<i>Harmonies</i>	12
<i>Previews</i>	24
<i>Color Blindness Simulation</i>	28
<i>CSS Examples</i>	31

Color

**YUV(70.3010, -3.1064,
16.3990)**

Conversions

Conversions Part 1

Format	Color
Hex	593E40
RGB	89, 62, 64
RGB Percent	35%, 24%, 25%
CMY	0.6510, 0.7569, 0.7490
CMYK	0.00, 0.30, 0.28, 0.65
HSL	356°, 18%, 30%
HSV	356°, 30%, 35%
XYZ	6.7679, 5.9393, 5.6402
YIQ	70.3010, 15.4500, 6.3460

Conversions

Conversions Part 2

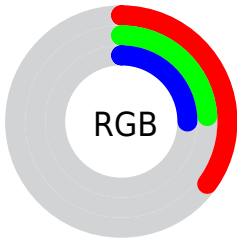
Format	Color
R_{YB}	89, 62, 64
Decimal	5848640
CIE Lab	29.26, 12.16, 3.48
CIE LCh	29, 12.647, 15.961
Yxy	5.9393, 0.3689, 0.3237
Android (android.graphics.Color)	4284038720 (0xFF593E40)
YUV	70.3010, -3.1064, 16.3990
Hunter-Lab	24.3706, 6.9220, 3.3377

Details

The YUV color **70.3010, -3.1064, 16.3990** is a dark color, and the websafe version is hex **663333**. A complement of this color would be **80.6990, 3.1064, -16.3990**, and the grayscale version is **70.0000, 0.0000, 0.0000**.

A 20% lighter version of the original color is **119.1980, -3.5486, 18.2434**, and **26.2190, -2.0800, 13.8399** is the 20% darker color. If you saturate the color by 10%, you get **64.1060, -3.9963, 21.8320**, and if you desaturate by 10%, it is **76.4960, -2.2165, 10.9660**.

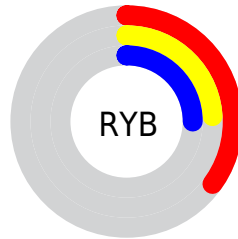
Distribution



Red (35%)

Green (24%)

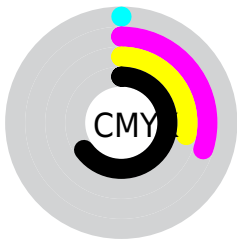
Blue (25%)



Red (35%)

Yellow (24%)

Blue (25%)

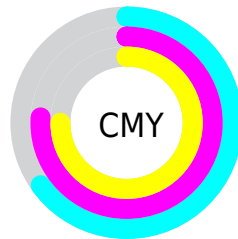


Cyan (0%)

Magenta (30%)

Yellow (28%)

Black (65%)



Cyan (65%)

Magenta (76%)

Yellow (75%)

Brightness & Saturation Gradients

These gradients show how the YUV color 70.3010, -3.1064, 16.3990 changes by changing the brightness by 10 percent. The first figure shows a shift by +10% for each color and the second figure -10%.

Similar to the brightness gradients but the following saturation gradients show a change of the YUV color 70.3010, -3.1064, 16.3990 by changing the saturation by 10% instead.

■ 70.3010, -3.1064,
16.3990

■ 70.3010, -3.1064,
16.3990

■ 255.0000, 0.0000,
0.0000

■ 47.7030, -2.8116,
15.1695

■ 119.1980, -3.5486,
18.2434

■ 26.2190, -2.0800,
13.8399

■ 144.4970, -3.6960,
18.8581

■ 5.9800, -2.9481,
12.2955

■ 171.0950, -3.9908,
20.0877

■ 0.0000, 0.0000,
0.0000

■ 198.3940, -4.1382,
20.7025

■ 226.3940, -4.1382,
20.7025

■ 248.2180, -0.6005,

5.9478

■ 70.3010, -3.1064,
16.3990

■ 70.3010, -3.1064,
16.3990

■ 64.1060, -3.9963,
21.8320

■ 76.4960, -2.2165,
10.9660

■ 57.9110, -4.8861,
27.2651

■ 82.6910, -1.3267,
5.5330

■ 51.6020, -6.2128,
32.7980

■ 89.0000, 0.0000,
0.0000

■ 45.4070, -7.1027,
38.2311

■ 95.1950, 0.8899,
-5.4330

■ 39.7990, -8.2819,
43.1493

■ 100.8030, 2.0691,
-10.3512

■ 33.6040, -9.1718,
48.5823

■ 106.9980, 2.9590,
-15.7842

■ 27.4090, -10.0616,
54.0153

■ 113.3070, 4.2856,
-21.3172

■ 119.5020, 5.1755,
-26.7503

■ 125.6970, 6.0654,
-32.1833

Harmonies

Analogous

The Analogous color harmony consists of three colors that are next to each other on the color wheel.



70.5440, 1.7038, 13.5549



70.3010, -3.1064, 16.3990



69.8510, -7.3215, 15.0397

Triad

The Triadic color harmony groups three colors that are evenly spaced from another and form a triangle on the color wheel.



70.3010, -3.1064, 16.3990



67.0610, -5.9461, -6.1925



66.9580, 10.3737, -13.9952

Complementary

The Complementary color scheme is a pair of colors which are on the opposite of each other on the color wheel.



70.3010, -3.1064, 16.3990



80.6990, 3.1064, -16.3990

Split Complementary

Split-complementary colors differ from the complementary color scheme. The scheme consists of three colors, the original color and two neighbors of the complement color.



64.8710, 8.9376, -20.0579



70.3010, -3.1064, 16.3990



65.3850, -0.6828, -14.3696

Square

The Square scheme is like the rectangle color scheme, but the four colors are evenly spaced on the color wheel.



70.3010, -3.1064, 16.3990



68.0190, -8.8834, 2.6143



64.4320, 4.7170, -19.6729



69.0840, 9.3256, -4.4587

Rectangle

The Rectangle color scheme consists of four colors that form a rectangle on the color wheel.



70.3010, -3.1064, 16.3990



69.3730, -9.0579, 11.9509



64.4320, 4.7170, -19.6729



66.2350, 10.2371, -16.8691

Sweetspot

The Sweet Spot groups the original color and five complimentary colors.



70.3010, -3.1064, 16.3990



107.4030, -1.1847, 6.6626



72.5530, 8.1084, 12.6700



54.2070, -0.5951, 4.2035



186.0000, 0.0000, 0.0000



59.0000, 0.0000, 0.0000

Same Dimension

The Same Dimension uses a secret algorithm to generate beautiful new colors.



70.3010, -3.1064, 16.3990



86.0140, -4.4439, 25.4207



76.5300, -7.1633, 10.9362



40.1960, -0.5896, 2.4591



32.9050, -12.2782, 64.9813



72.2030, -27.2151, 142.7730

Inverse Universe

The Inverse Universe completely reimagines the original color for something new.



70.3010, -3.1064, 16.3990



86.0140, -4.4439, 25.4207



74.4700, 7.1633, -10.9362



40.1960, -0.5896, 2.4591



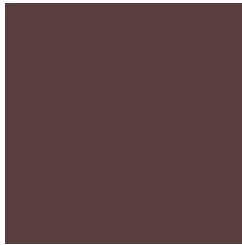
32.9050, -12.2782, 64.9813



72.2030, -27.2151, 142.7730

Previews

White Background



This preview shows how the YUV color 70.3010, -3.1064, 16.3990 looks on a white background.

Color Contrast Check

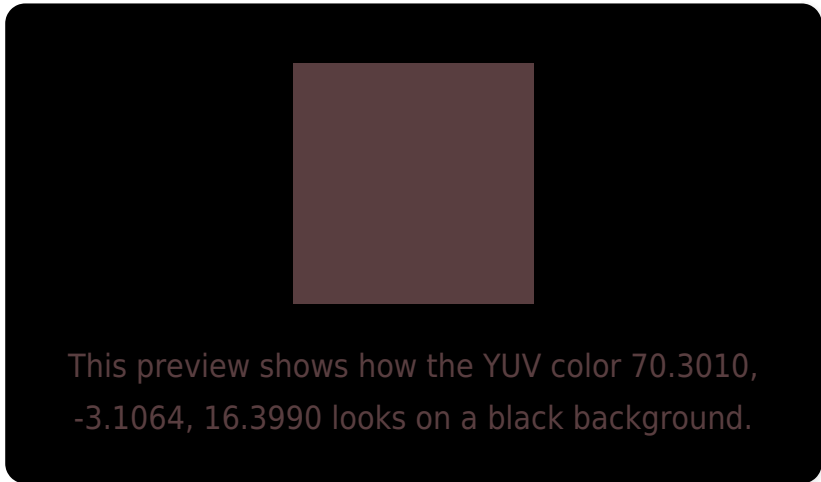
Large Text (above 18pt) WCAG AA ✓ Pass

Any Text WCAG AA ✓ Pass

Large Text (above 18pt) WCAG AAA ✓ Pass

Any Text WCAG AAA ✓ Pass

Black Background



Color Contrast Check

Large Text (above 18pt) WCAG AA × Fail

Any Text WCAG AA × Fail

Large Text (above 18pt) WCAG AAA × Fail

Any Text WCAG AAA × Fail

If you want to check with other color combinations, try the [Color Contrast Checker](#).

YUV 70.3010, -3.1064, 16.3990

Background



This preview shows how black text looks on a background with the YUV color 70.3010, -3.1064, 16.3990.

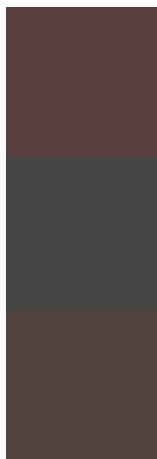


This preview shows how white text looks on a background with the YUV color 70.3010, -3.1064,

Color Blindness Simulation

Color vision deficiency is a very complex topic, and I could not describe the different causes any better than Wikipedia does, so if you want to learn more, you should check out their [article about color blindness](#).

Dichromacy



Original Color

70.3010, -3.1064, 16.3990

Protanopia

69.4840, -0.7316, 1.3295

Deuteranopia

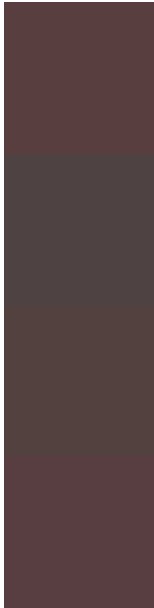
69.8330, -3.3687, 7.1625



Tritanopia

70.5290, -2.2328, 16.1991

Trichromacy



Original Color

70.3010, -3.1064, 16.3990

Protanomaly

69.7020, -1.3321, 7.2773

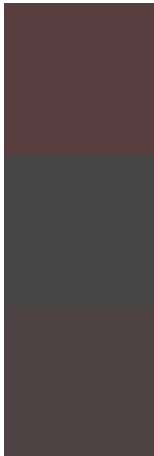
Deuteranomaly

69.8550, -3.3795, 10.6512

Tritanomaly

70.4150, -2.6696, 16.2990

Monochromacy



Original Color

70.3010, -3.1064, 16.3990

Achromatopsia

70.0000, 0.0000, 0.0000

Achromatomaly

70.1040, -1.0373, 6.0478

CSS Examples

Text

The CSS property to change the color of the text to YUV 70.3010, -3.1064, 16.3990 is called "color". The color property can be set on classes, ids or directly on the HTML element.

This example shows how text in the color `rgb(89, 62, 64)` looks like.

```
.text, #text, p{  
    color:rgb(89, 62, 64)  
}
```

If you want to add a text shadow in that color use the text-shadow property, you can generate a text shadow directly with our [CSS Text Shadow Generator](#).

Here you see how black text with a 4 pixel rgb(89, 62, 64) colored shadow looks like.

```
.shadow{ text-shadow: 4px 4px 2px rgb(89, 62, 64) }
```

Border

The CSS property to change the border of an element to YUV 70.3010, -3.1064, 16.3990 is called "border". The border property can be set on classes, ids or directly on the HTML element.

This example shows the color as border, it can be applied via the CSS property "border" or "border-color".

```
.border, #border, table{ border:4px solid rgb(89, 62, 64) }
```


If only the border color should be changed use the property border-color.

```
.border{ border-color:rgb(89, 62, 64) }
```

If you want to add a box shadow in that color use:

Here you see how a box with a 4 pixel rgb(89, 62, 64) colored shadow looks like.

```
.boxshadow{ -moz-box-shadow:4px 4px 4px  
4px rgb(89, 62, 64); -webkit-box-  
shadow:4px 4px 4px 4px rgb(89, 62, 64);  
box-shadow:4px 4px 4px 4px rgb(89, 62, 64)  
}
```

Background

The CSS property to change the background color of an element to YUV 70.3010, -3.1064, 16.3990 is called "background". The background property can be set on classes, ids or directly on the HTML element.

```
.background, #background, body{  
background: rgb(89, 62, 64) }
```

If only the background color should be changed can be used:

```
.background{ background-color: rgb(89, 62,  
64) }
```

This example shows the color as background, it is applied via the CSS property "background".

To optimize and compress your CSS code, you can use our [online CSS compressor and optimizer](#) based on csstidy. If you want to create a linear or radial gradient as background or border, check our [CSS Gradient Generator](#).

Hey! You found this booklet interesting? Support Converting Colors with the new Membership Option!

The pro membership hides all ads, plus gives you double the colors in the color bucket, and more awesome pro features!

[Learn more, Memberships starting at \\$2.50/m!](#)

**Follow me
on Twitter!**

@ConvertingColor