

Converting Colors

YUV(70.4420, -3.6689, 10.1364)

Have a look what the booklet for
YUV(70.4420, -3.6689, 10.1364)
contains.

YUV(70.4420, -3.6689, 10.1364)	3
<i>Conversions</i>	4
<i>Details</i>	6
<i>Harmonies</i>	12
<i>Previews</i>	24
<i>Color Blindness Simulation</i>	28
<i>CSS Examples</i>	31

Color

**YUV(70.4420, -3.6689,
10.1364)**

Conversions

Conversions Part 1

Format	Color
Hex	52423F
RGB	82, 66, 63
RGB Percent	32%, 26%, 25%
CMY	0.6784, 0.7412, 0.7529
CMYK	0.00, 0.20, 0.23, 0.68
HSL	9°, 13%, 28%
HSV	9°, 23%, 32%
XYZ	6.3251, 6.0491, 5.5369
YIQ	70.4420, 10.4990, 2.4590

Conversions

Conversions Part 2

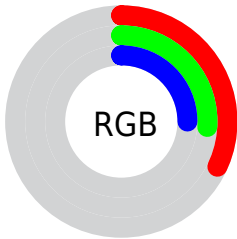
Format	Color
R_YB	82, 67, 63
Decimal	5390911
CIE Lab	29.54, 6.34, 4.41
CIE LCh	30, 7.727, 34.837
Yxy	6.0491, 0.3531, 0.3377
Android (android.graphics.Color)	4283580991 (0xFF52423F)
YUV	70.4420, -3.6689, 10.1364
Hunter-Lab	24.5950, 2.8635, 3.8691

Details

The YUV color **70.4420, -3.6689, 10.1364** is a dark color, and the websafe version is hex **333333**. A complement of this color would be **74.5580, 3.6689, -10.1364**, and the grayscale version is **70.0000, 0.0000, 0.0000**.

A 20% lighter version of the original color is **119.0400, -3.9637, 11.3659**, and **26.9580, -2.9373, 8.8068** is the 20% darker color. If you saturate the color by 10%, you get **65.4210, -5.1376, 14.5398**, and if you desaturate by 10%, it is **75.4630, -2.2003, 5.7329**.

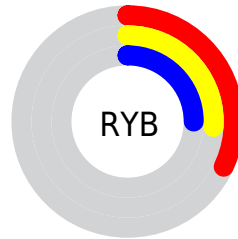
Distribution



Red (32%)

Green (26%)

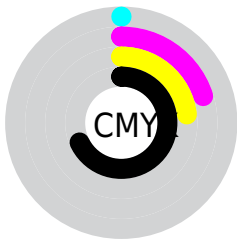
Blue (25%)



Red (32%)

Yellow (26%)

Blue (25%)

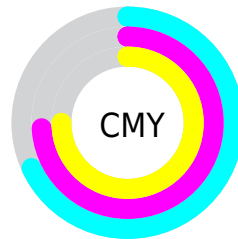


Cyan (0%)

Magenta (20%)

Yellow (23%)

Black (68%)



Cyan (68%)

Magenta (74%)

Yellow (75%)

Brightness & Saturation Gradients

These gradients show how the YUV color 70.4420, -3.6689, 10.1364 changes by changing the brightness by 10 percent. The first figure shows a shift by +10% for each color and the second figure -10%.

Similar to the brightness gradients but the following saturation gradients show a change of the YUV color 70.4420, -3.6689, 10.1364 by changing the saturation by 10% instead.

■ 70.4420, -3.6689,
10.1364

■ 70.4420, -3.6689,
10.1364

■ 255.0000, 0.0000,
0.0000

■ 48.1430, -3.5215,
9.5216

■ 119.0400, -3.9637,
11.3659

■ 26.9580, -2.9373,
8.8068

■ 144.3390, -4.1111,
11.9807

■ 3.2890, -1.6215,
6.7625

■ 171.2250, -4.5479,
12.0807

■ 0.0000, 0.0000,
0.0000

■ 198.5240, -4.6953,
12.6955

■ 226.5240, -4.6953,
12.6955

■ 250.3380, -2.6316,

4.0886

■ 70.4420, -3.6689,
10.1364

■ 70.4420, -3.6689,
10.1364

■ 65.4210, -5.1376,
14.5398

■ 75.4630, -2.2003,
5.7329

■ 60.4000, -6.6062,
18.9432

■ 80.4840, -0.7316,
1.3295

■ 55.2650, -8.5116,
23.4466

■ 85.6190, 1.1738,
-3.1739

■ 50.2440, -9.9803,
27.8500

■ 90.6400, 2.6425,
-7.5773

■ 45.2230, -11.4489,
32.2534

■ 95.6610, 4.1111,
-11.9807

■ 40.7890, -13.2070,
36.1420

■ 100.0950, 5.8692,
-15.8693

■ 35.7680, -14.6756,
40.5455

■ 105.1160, 7.3378,
-20.2727

■ 32.1490, -15.8495,
43.7193

■ 110.2510, 9.2433,
-24.7761

■ 115.2720, 10.7119,
-29.1795

Harmonies

Analogous

The Analogous color harmony consists of three colors that are next to each other on the color wheel.



70.5390, -0.7587, 10.0513



70.4420, -3.6689, 10.1364



70.2630, -5.5527, 7.6623

Triad

The Triadic color harmony groups three colors that are evenly spaced from another and form a triangle on the color wheel.



70.4420, -3.6689, 10.1364



68.0870, -2.0149, -7.0923



69.4600, 5.6892, -4.7884

Complementary

The Complementary color scheme is a pair of colors which are on the opposite of each other on the color wheel.



70.4420, -3.6689, 10.1364



74.5580, 3.6689, -10.1364

Split Complementary

Split-complementary colors differ from the complementary color scheme. The scheme consists of three colors, the original color and two neighbors of the complement color.



68.7260, 5.5581, -9.4067



70.4420, -3.6689, 10.1364



67.2760, 1.3429, -10.7661

Square

The Square scheme is like the rectangle color scheme, but the four colors are evenly spaced on the color wheel.



70.4420, -3.6689, 10.1364



68.5500, -4.2151, -1.3593



67.6610, 4.1111, -11.9807



70.4500, 4.2152, 1.3594

Rectangle

The Rectangle color scheme consists of four colors that form a rectangle on the color wheel.



70.4420, -3.6689, 10.1364



69.5400, -5.6892, 4.7884



67.6610, 4.1111, -11.9807



68.8620, 5.9840, -6.0180

Sweetspot

The Sweet Spot groups the original color and five complimentary colors.



70.4420, -3.6689, 10.1364



102.6800, -1.3212, 3.7886



70.5050, 4.1880, 10.0811



51.0820, -1.0264, 2.5591



181.0000, 0.0000, 0.0000



54.0000, 0.0000, 0.0000

Same Dimension

The Same Dimension uses a secret algorithm to generate beautiful new colors.



70.4420, -3.6689, 10.1364



88.9050, -5.8692, 15.8693



75.7250, -6.2734, 5.5032



38.1960, -0.5896, 2.4591



41.3740, -20.3974, 55.8000



91.0870, -44.9059, 123.5807

Inverse Universe

The Inverse Universe completely reimagines the original color for something new.



74.5580, 3.6689, -10.1364



95.0950, 5.8692, -15.8693



69.2750, 6.2734, -5.5032



39.2170, 0.8790, -1.9443



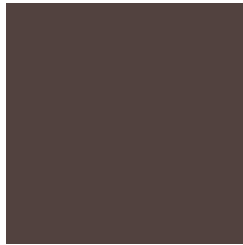
63.6260, 20.3974, -55.8000



140.9130, 44.9059, -123.5807

Previews

White Background



This preview shows how the YUV color 70.4420, -3.6689, 10.1364 looks on a white background.

Color Contrast Check

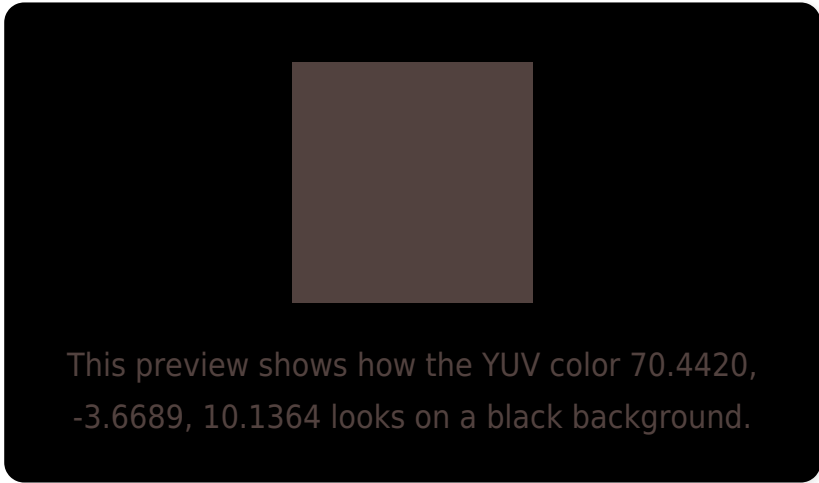
Large Text (above 18pt) WCAG AA ✓ Pass

Any Text WCAG AA ✓ Pass

Large Text (above 18pt) WCAG AAA ✓ Pass

Any Text WCAG AAA ✓ Pass

Black Background



Color Contrast Check

Large Text (above 18pt) WCAG AA × Fail

Any Text WCAG AA × Fail

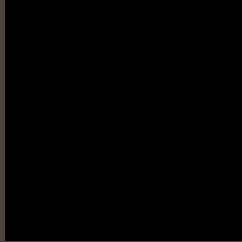
Large Text (above 18pt) WCAG AAA × Fail

Any Text WCAG AAA × Fail

If you want to check with other color combinations, try the [Color Contrast Checker](#).

YUV 70.4420, -3.6689, 10.1364

Background



This preview shows how black text looks on a background with the YUV color 70.4420, -3.6689, 10.1364.

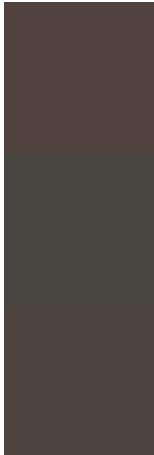


This preview shows how white text looks on a background with the YUV color 70.4420, -3.6689,

Color Blindness Simulation

Color vision deficiency is a very complex topic, and I could not describe the different causes any better than Wikipedia does, so if you want to learn more, you should check out their [article about color blindness](#).

Dichromacy



Original Color

70.4420, -3.6689, 10.1364

Protanopia

69.4410, -2.1894, 2.2442

Deuteranopia

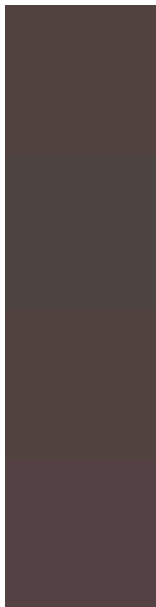
70.1320, -3.5161, 7.7772



Tritanopia

70.9520, -0.4693, 10.5661

Trichromacy



Original Color

70.4420, -3.6689, 10.1364

Protanomaly

69.9360, -2.9264, 5.3181

Deuteranomaly

70.4310, -3.6635, 8.3920

Tritanomaly

70.6100, -1.7797, 10.8660

Monochromacy



Original Color

70.4420, -3.6689, 10.1364

Achromatopsia

70.0000, 0.0000, 0.0000

Achromatomaly

70.2670, -1.6106, 3.2738

CSS Examples

Text

The CSS property to change the color of the text to YUV 70.4420, -3.6689, 10.1364 is called "color". The color property can be set on classes, ids or directly on the HTML element.

This example shows how text in the color `rgb(82, 66, 63)` looks like.

```
.text, #text, p{  
    color:rgb(82, 66, 63)  
}
```

If you want to add a text shadow in that color use the text-shadow property, you can generate a text shadow directly with our [CSS Text Shadow Generator](#).

Here you see how black text with a 4 pixel rgb(82, 66, 63) colored shadow looks like.

```
.shadow{ text-shadow: 4px 4px 2px rgb(82, 66, 63) }
```

Border

The CSS property to change the border of an element to YUV 70.4420, -3.6689, 10.1364 is called "border". The border property can be set on classes, ids or directly on the HTML element.

This example shows the color as border, it can be applied via the CSS property "border" or "border-color".

```
.border, #border, table{ border:4px solid rgb(82, 66, 63) }
```


If only the border color should be changed use the property `border-color`.

```
.border{ border-color:rgb(82, 66, 63) }
```

If you want to add a box shadow in that color use:

Here you see how a box with a 4 pixel `rgb(82, 66, 63)` colored shadow looks like.

```
.boxshadow{ -moz-box-shadow:4px 4px 4px  
4px rgb(82, 66, 63); -webkit-box-  
shadow:4px 4px 4px 4px rgb(82, 66, 63);  
box-shadow:4px 4px 4px 4px rgb(82, 66, 63)  
}
```

Background

The CSS property to change the background color of an element to YUV 70.4420, -3.6689, 10.1364 is called "background". The background property can be set on classes, ids or directly on the HTML element.

```
.background, #background, body{  
background: rgb(82, 66, 63) }
```

If only the background color should be changed can be used:

```
.background{ background-color: rgb(82, 66,  
63) }
```

This example shows the color as background, it is applied via the CSS property "background".

To optimize and compress your CSS code, you can use our [online CSS compressor and optimizer](#) based on csstidy. If you want to create a linear or radial gradient as background or border, check our [CSS Gradient Generator](#).

Hey! You found this booklet interesting? Support Converting Colors with the new Membership Option!

The pro membership hides all ads, plus gives you double the colors in the color bucket, and more awesome pro features!

[Learn more, Memberships starting at \\$2.50/m!](#)

**Follow me
on Twitter!**

@ConvertingColor